

HSD-SLIMLINE + SE

PROFESSIONAL DETACHABLE EARHOOK MICROPHONE

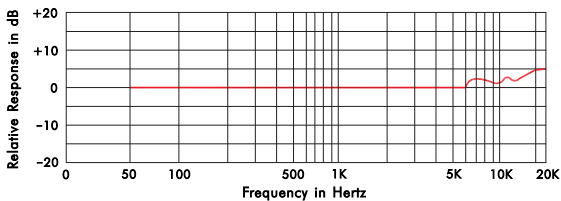
Features:

- Detachable and interchangeable cable for universal use.
- Optionally available all kind's of connector.
- Flexible and easily deformed to fit over the ear of any user.
- Primarily made for indoor and outdoor professionals.
- Designed for use on stage, church, computers, surveillance and other applications requiring minimum microphone visibility with hands-free operation.
- Provides high-quality voice/sound pickup.
- Ultra light weight and easy clip-on style for comfortable use.
- Compatible with wireless body pack transmitters.

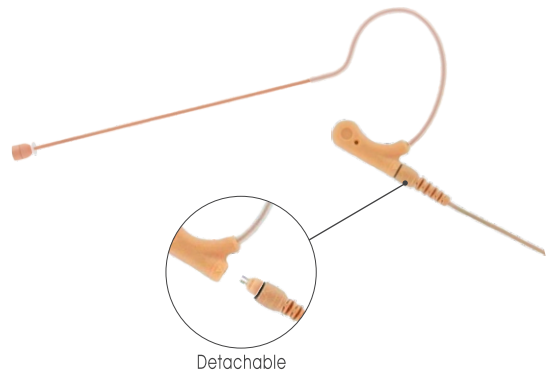
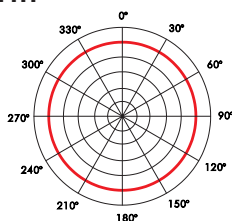
Specification:

- Elements : Back Electret Condenser
- Polar pattern : Omni-directional
- Frequency Range : 50Hz~18,000Hz
- Sensitivity : -60dB ± 3dB(0dB = 1v/ubar @ 1KHz)
- Impedance : 1,500 Ω ± 30% @ 1KHz
- Operating Voltage : 1V~10V DC
- Weight : 4 grams(w/o connector and cable)
- Accessory : Windscreen, Tie clip

Frequency Response Graph:

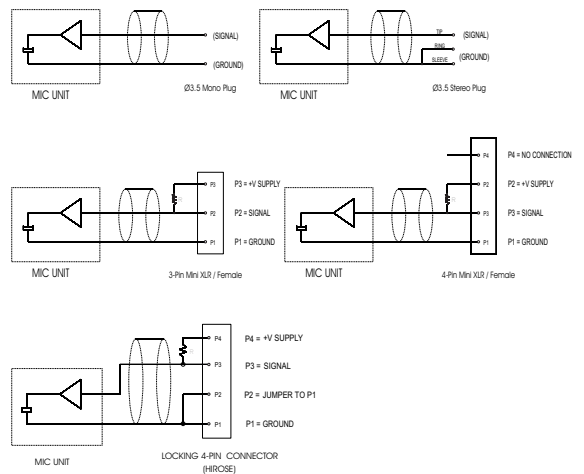


Polar Pattern:



Detachable

Circuit Diagrams:



Optional Plug:



Caution:

- Adjust the curve of the microphone boom to follow the shape of your face until microphone head is 13mm away from the corner of mouth.
- Carefully make small bends with 2 hands using 3 fingers (thumb, index & middle). DO NOT bend beyond 20 degree.
- DO NOT bend it over sharp edge.