

EVE-X56M-CF-INT

BMW X5M, X6M, XM, X5 M60i

Installation Guide

All directions referring to left and right are based on looking at the engine from in front of the car.

Please take care when removing parts and fasteners. Contact your Eventuri dealer or email info@eventuri.net for any further information.

Tools Required:

- Trim Tool
- 6mm, 7mm, 13mm Sockets and ratchet
- E12 E-Bit Socket
- 3mm Allen Key

Estimated Installation Time: 1 to 2 hours

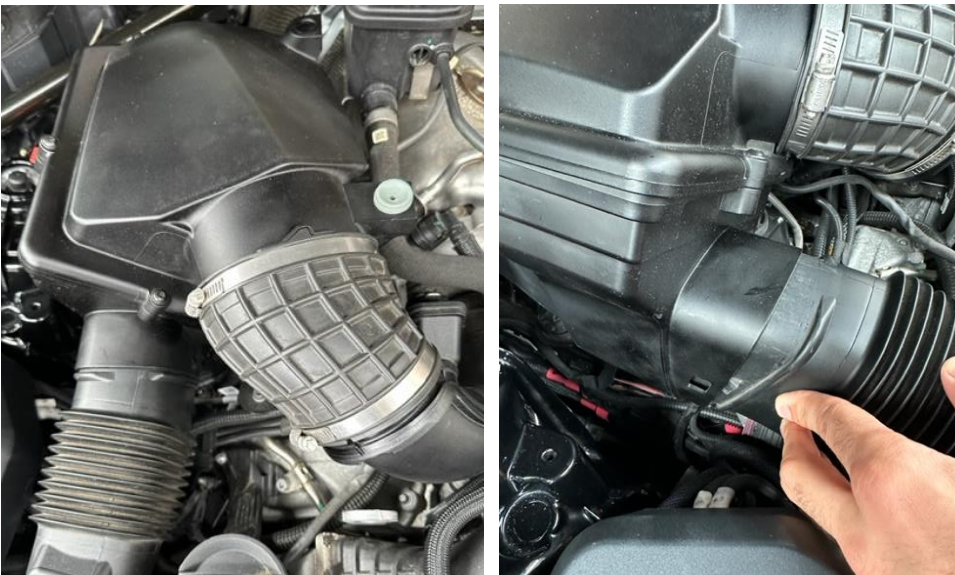




1. Start by removing the engine cover and strut brace. There are 6 x E-Bit bolts and 2 x 13mm Bolts to be removed.



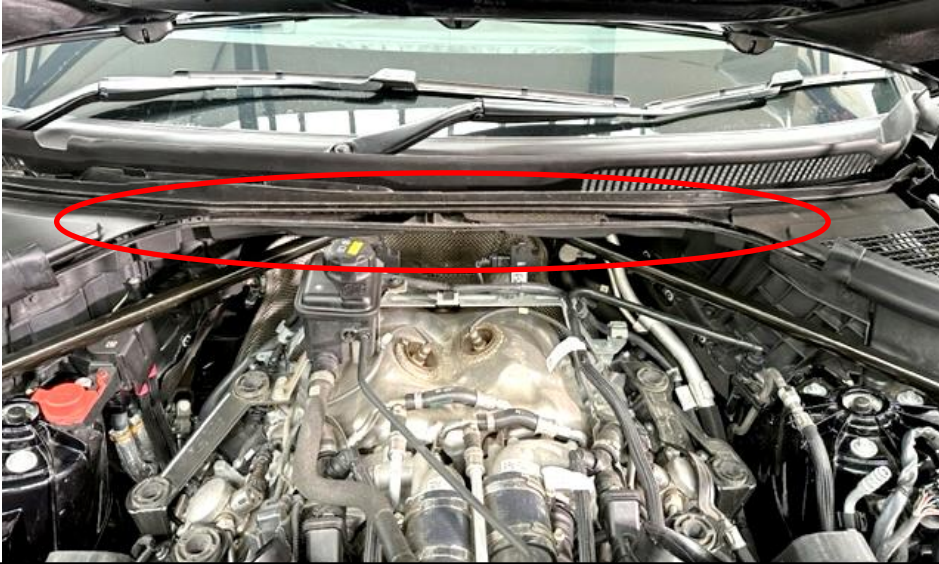
2. With the strut brace removed we can now start removing the stock airboxes.



3. Loosen the hose clamps around the coupler and also pull the cold air feeds away from the bases of the airboxes by pressing them in the middle to unclip while pulling.



4. Remove the airboxes on both sides. They can be pulled out as they sit on 3 rubber grommets only.



5. Remove the rear rubber trim at the back of the engine bay.



6. We will replace it with the pre-cut trim supplied with the intake.



7. Install the pre-cut trim making sure it is centered.



8. Install the supplied silicon couplers to the turbo inlets. There are 2 sizes provided. The larger one goes onto the Right inlet.



9. Place the hose clamps as shown with the screw at the back – do not tighten them yet. Push the silicon down as far as possible.

LHS

RHS



10. Identify the LHS and RHS rubber ducts



11. Take the LHS rubber duct and the LHS Carbon Duct.



12. Push the rubber duct onto the carbon duct – by placing your hand inside the carbon opening you can stretch the rubber from the inside to go onto the carbon.



13. Repeat for the RHS duct assembly



14. Identify the LHS and RHS Filter Housings.



15. Place the LHS Housing inside the RHS Duct. The metal filter cowl should go into the duct so the rubber seal should be pressed against the flat part of the filter cowl.



16. Use 2 of the supplied M5 screws and locate them into the bracket as shown to keep the filter housing and duct together. Don't tighten them yet.



17. Lower the assembly into place – see next step.



18. Insert the OEM air feed into the carbon duct.



19. Line up the mounts on the intake with the grommets – there are 3 in total.



20. Position the housing over the silicon coupler.



21. Push the intake down into the grommets and into the silicon. Once fully located, pull the silicon coupler upwards to meet the flange around the carbon housing.



22. Tighten the hose clamps. DO NOT overtighten around the carbon. It only needs to be hand tight.



23. Now you can tighten these 2 screws.



24. Repeat for the RHS.



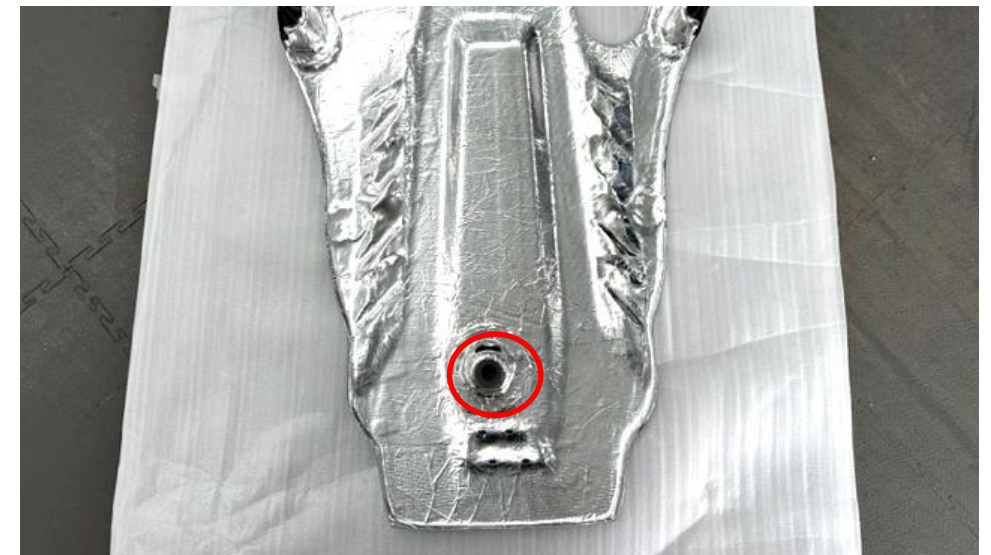
25. Remove only 2 of the grommets for the engine cover from the stock airboxes.



26. Remove the grommet from the stock engine cover.



27. Remove the M Badge – these are tabs on the back which can be carefully folded back to allow the badge to be removed.



28. Install the rubber grommet into the carbon cover and also the M badge.



29. Push the rubber grommets from the stock airboxes onto the brackets on the carbon ducts.



30. This is the LHS duct.



31. Reinstall the strut brace. If you have this reservoir in this position as circled then go to the next step. If your reservoir is not in this position, go to step 33.



32. If you have the reservoir as shown previously, remove this blanking plate and the rubber trim from the carbon engine cover. The can just be pulled out.



33. Install the engine cover.
Adjust the rubber grommet
positions on the ducts as
required.



**You have now completed the installation of the
Eventuri X5M, XM System.**

Eventuri cannot take responsibility for an incorrectly
installed intake or any damage caused during
installation.