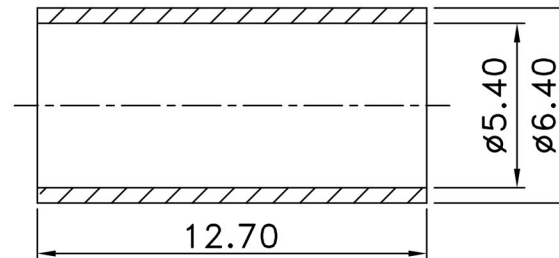
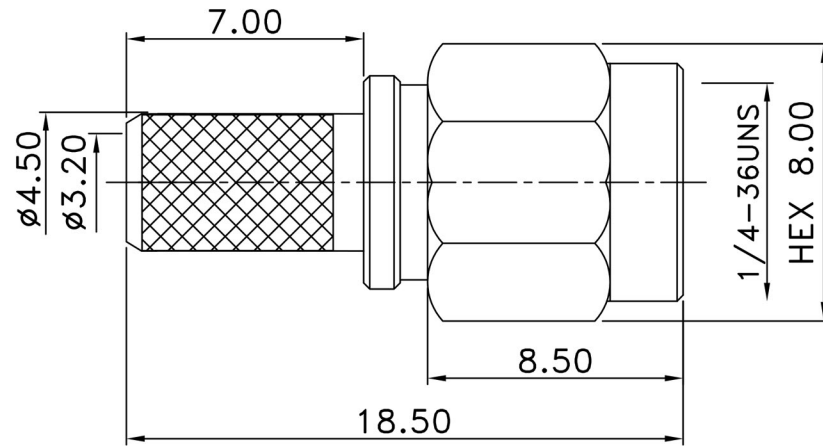
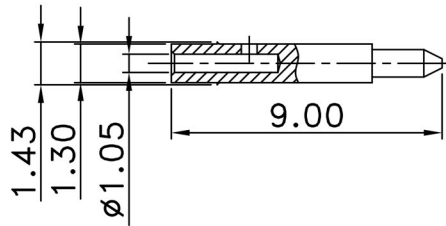


SMA-01-01-F-TGG SMA plug straight crimp for RG58

REV	DESCRIPTION	DRAWN	DATE



7	FERRULE	1	BRASS	GOLD
6	PIN	1	Be Cu	GOLD
5	BODY	1	BRASS	GOLD
4	INSULATOR	1	TEFLON	NONE
3	WASHER	1	STELL	NONE
2	GASKET	1	SILICONE	NONE
1	SHELL	1	BRASS	GOLD
NO	Description	Q'ty	Material	Finish

UNLESS OTHERWISE SPECIFIED
 1.REMOVE ALL BURRS.
 2.BREAK ALL CONNERS & EDGES CO.15 MAX.
 3.CHAMFER 1ST & LAST THREADS 45°
 4.DIAMETERS ON COMMON CENTERS.
 TO BE CONCENTRIC WITHIN 0.1 TIR.
 5.ALL DIMENSIONS ARE AFTER PLATING.

* MAJOR DIMENSION
 UNLESS OTHERWISE NOTED TOLERANCES
 0.5-6=±0.2
 6-30=±0.4
 30-120=±0.6
 120-315=±1.0
 ANGLES=±1°

APPROVED
 CHECKED
 DRAWN andrew
 DRAWN DATE 03/07/15


 TITLE SMA MALE CRIMP FOR RG58
 DRAWING NO. SMA-01-01-F-TGG
 REV A
 FILE NO.