

RAK Hotspot v2 Datasheet

Overview

Description

Hotspot Details

- Efficient for a new cryptocurrency, **Helium (HNT)**
- Complete set-up in minutes using a smartphone
- **LongFi technology** maximizes range and battery life without Wi-Fi, cellular or Bluetooth
- Low Power – only uses about the same amount as an LED light bulb (5W)
- Easily manage Hotspots and tokens from the mobile app
- LongFi™ Technology



Helium LongFi is a technology architecture that combines the leading wireless technology, LoRaWAN, and the Helium Blockchain. LongFi is optimized for miles of range, and long battery life for IoT devices.

Proof-of-Coverage

RAK Hotspot earns Helium when devices connect, and for validating wireless coverage delivered by peers. Using a system called Proof-of-Coverage, RAK Hotspot earns more Helium when they're in range of other RAK Hotspot, but need to be at least 300 meters apart.

Range depends on the environment. For rural areas, **up to 10 miles or more**, but more dense areas, **up to a mile**. Single RAK Hotspot earn less as they can only issue Challenges over the internet, and can't participate in Proof-of-Coverage.

Cover Your City in Miles of Wireless Coverage

- Deliver many square miles of coverage from a single RAK Hotspot.
- Based on initial testing, only about 50 to 100 RAK Hotspot are needed to provide complete coverage for an entire city.

Connect Anything

- Create a new global network for billions of devices.
- Any IoT device can become Helium-enabled using readily available off-the-shelf hardware components, software, and a reference design that is open source for anyone to improve upon.

Features

- Computing with Raspberry Pi4 (Linux)
- 2 GB on-board RAM
- 32 GB SD card
- Based on the LoRa Concentrator Engine: Semtech® SX1302

- Built-in Heat Sink for thermal heat dissipation management
- Supports 5 V / 2.4 A power supply
- IP30 housing
- TX power up to 27 dBm, RX sensitivity down to -139 dBm @SF12, BW 125 KHz
- LoRa Frequency band support: RU864, IN865, EU868, US915, AU915, KR920, AS923.
- Includes Pi ready 'ID EE PROM', GPIO setup, and device tree can be automatically configured from vendor information
- Supports a fully open source LoRaWAN server
- 2.4 GHz and 5.0 GHz IEEE 802.11b/g/n/ac wireless LAN, Bluetooth 5.0, BLE

Specifications

Overview

The overview covers the RAK Hotspot hotspot details and block diagram.

Board Overview

The outer dimension of RAK Hotspot is **92 x 68.3 x 57.2 mm**.

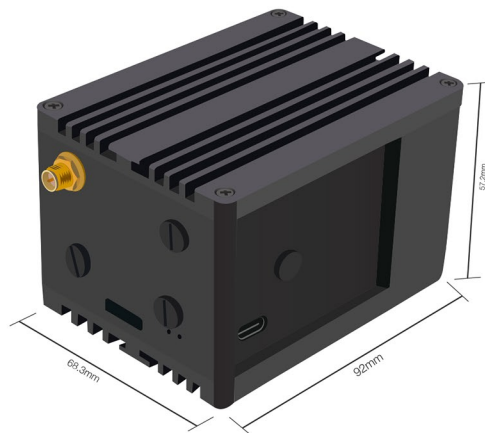


Figure 1: Device Dimensions

Hotspot Details

Figure 2 summarizes the basic building blocks of the RAK Hotspot. The RAK2287 is an essential part of it as it provides all LoRaWAN connectivity. It receives and transmits LoRa Frames and takes care of modulating/demodulating the signals among others. The processing of the LoRa Frames, as well as higher-level protocol-related tasks, is done by the embedded host system (Raspberry Pi). Received and processed LoRa Frames are being sent to a LoRaWAN Server. The segmentation of protocol-related tasks is outside the scope of this document.

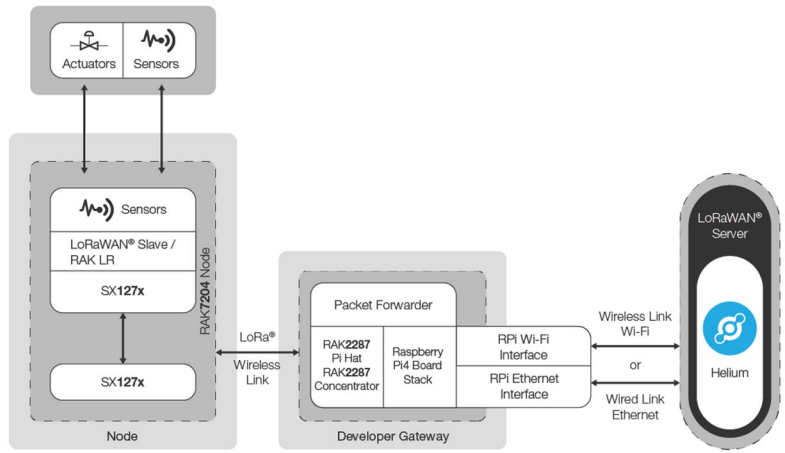


Figure 2: RAK Hotspot System Structure

Block Diagram

The RAK Hotspot is the central hardware solution for all LoRa based radio communication. It receives and transmits radio messages. The processing of radio messages, as well as the protocol-related tasks, is done by the embedded host system (Raspberry Pi 4). Received and processed radio messages are being sent to a LoRaWAN server. Figure 3 shows the block diagram of the RAK Hotspot.

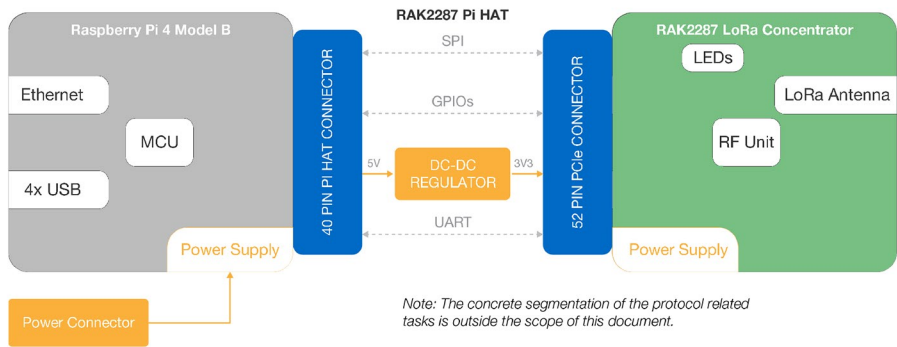


Figure 3: RAK Hotspot Block Diagram

NOTE

The concrete segmentation of the protocol-related tasks is outside the scope of this document.

Hardware Interfaces

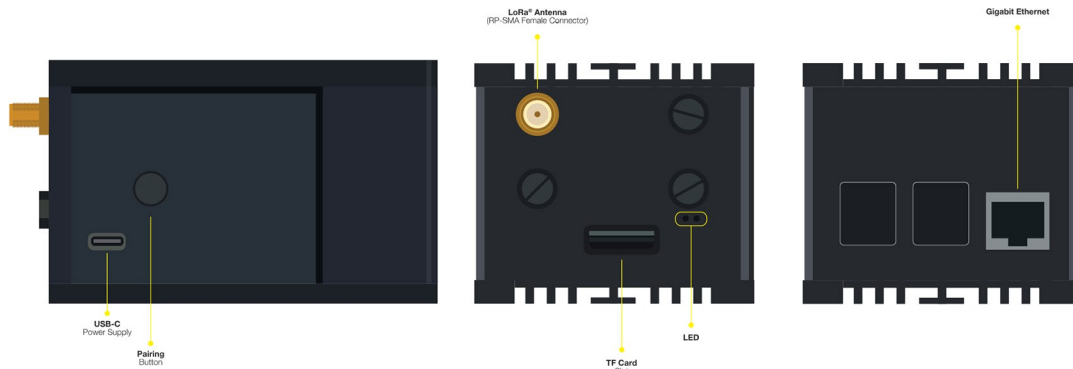


Figure 4: RAK Hotspot Interfaces

RF Characteristics

Operating Frequencies

The RAK Hotspot supports all LoRaWAN frequency channels as below. It is easy to configure while building the firmware from the source code.

| Region | Frequency (MHz) |
|---------------|-----------------|
| Europe | EU868 |
| North America | US915 |
| Asia | AS923 |
| Australia | AU915 |
| Korea | KR920 |
| India | IN865 |
| Russia | RU864 |

LoRa RF Characteristics

Transmitter RF Characteristics

The RAK Hotspot has an excellent transmitter performance. It is highly recommended to use an optimized configuration for the power level configuration, which is part of the HAL. This results in a mean RF output power level and current consumption.

| PA Control | PWID Control | Power |
|------------|--------------|--------|
| 0 | 10 | -6 dBm |
| 0 | 13 | -3 dBm |
| 0 | 17 | 0 dBm |
| 0 | 20 | 4 dBm |
| 1 | 0 | 8 dBm |
| 1 | 2 | 10 dBm |
| 1 | 4 | 12 dBm |
| 1 | 7 | 14 dBm |
| 1 | 9 | 16 dBm |
| 1 | 10 | 17 dBm |
| 1 | 12 | 19 dBm |
| 1 | 13 | 20 dBm |
| 1 | 16 | 23 dBm |
| 1 | 18 | 25 dBm |
| 1 | 20 | 26 dBm |
| 1 | 22 | 27 dBm |

NOTE

Normally, there is a ± 1.5 dB difference between the actual test value and the table data.

NOTE

If nothing else is stated, T=25 °C, VDD=5 V (Typ.).

| Parameter | Condition | Min | Typ. | Max |
|--|--------------------------|----------|------|----------|
| Frequency Range | | 863 MHz | | 870 MHz |
| Modulation Techniques | FSK/LoRa | | | |
| TX Frequency Variation vs. Temperature | Power Level Setting : 20 | -3 kHz | | +3 kHz |
| TX Power Variation vs. Temperature | Power Level Setting : 20 | -5 dBm | | +5 dBm |
| TX Power Variation | | -1.5 dBm | | +1.5 dBm |

| Parameter | Condition | Min | Typ. | Max |
|-----------------------|-----------|---------|------|---------|
| Frequency Range | | 902 MHz | | 928 MHz |
| Modulation Techniques | FSK/LoRa | | | |

Receiver RF Characteristics

It is highly recommended to use optimized RSSI calibration values, which is part of the HAL v3.l. For both Radio 1 and 2, the RSSI-Offset should be set at -169.0. The following table gives the typical sensitivity level of the RAK Hotspot.

| Signal Bandwidth (Khz) | Spreading Factor | Sensitivity (dBm) |
|------------------------|------------------|-------------------|
| 125 | 12 | -139 |
| 125 | 7 | -125 |
| 250 | 12 | -136 |
| 250 | 7 | -123 |
| 500 | 12 | -134 |
| 500 | 7 | -120 |

Antenna Specifications

LoRa Antenna

Overview

The LoRa Antenna with RP-SMA Male connector shown in Figure 5.



Figure 5: LoRa Antenna

Antenna Dimension

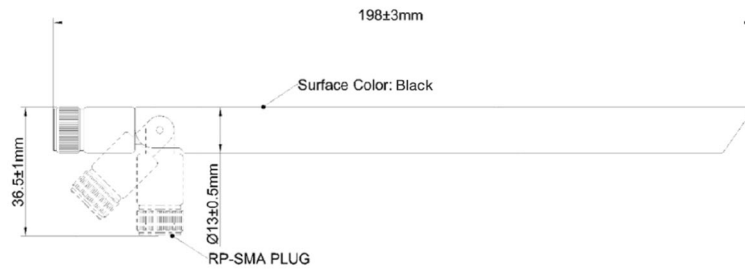


Figure 6: LoRa Antenna Dimension (mm)

Antenna Parameters

| Items | Specifications | Specifications |
|------------------------------------|-------------------------|-------------------------|
| Frequency Range | 863~870 MHz | 902~928 MHz |
| Peak Gain | 2.8 dBi | 2.3 dBi |
| Voltage Standard Wave Ratio (VSWR) | ≤1.5 | ≤1.5 |
| Efficiency | >80% | >80% |
| Feed Impedance | 50 Ohms | 50 Ohms |
| Working Temperature & Humidity | T: -35~+75 °C, H: 5~95% | T: -35~+75 °C, H: 5~95% |

Electrical Requirements

The RAK Hotspot operates at 5V/ 2.4A

| Parameter | Min. | Typical | Max |
|----------------|------|---------|--------|
| LoRa Tx Mode | - | - | 950 mA |
| Standby Power | - | 550 mA | - |
| Burn Test Mode | - | - | 940 mA |

NOTE

- **LoRa Tx Mode:** The LoRa module works at the maximum transmit power state.
- **Burn Test Mode:** Raspberry Pi CPU and memory are running at full capacity.

Environmental Requirements

The table below lists the operation and storage temperature requirements:

| Parameter | Min. | Typical | Max |
|-----------------------------|--------|---------|--------|
| Operation Temperature Range | -10 °C | +25 °C | +55 °C |
| Storage Temperature Range | -40 °C | | +85 °C |

Software

Firmware

| Model | Raspberry Pi Board | Firmware Version | Source |
|-------------|--------------------|------------------|--------|
| RAK Hotspot | Raspberry Pi 4 | | |

LoRaWAN

- Supports class A, C
- Supports connect to TTN server Supports LoRa package forward
- Supports build-in ChirpStack® LoRaWAN Server

Network Protocol Stack

- Supports 802.11ac
- Supports Wi-Fi AP mode and Client mode Supports DHCP

Certification



FCC Caution

Any changes or modifications not expressly approved by the party responsible for compliance could void the user's authority to operate the equipment.

This device complies with part 15 of the FCC Rules. Operation is subject to the following two conditions: (1) This device may not cause harmful interference, and (2) this device must accept any interference received, including interference that may cause undesired operation.

IMPORTANT NOTE

This equipment has been tested and found to comply with the limits for a Class B digital device, according to part 15 of the FCC Rules. These limits are designed to provide reasonable protection against harmful interference in a residential installation. This equipment generates, uses, and can radiate radio frequency energy and, if not installed and used following the instructions, may cause harmful interference to radio communications. However, there is no guarantee that interference will not occur in a particular installation. If this equipment does cause harmful interference to radio or television reception, which can be determined by turning the equipment off and on, the user is encouraged to try to correct the interference by one or more of the following measures:

- Reorient or relocate the receiving antenna.
- Increase the separation between the equipment and receiver.
- Connect the equipment into an outlet on a circuit different from that to which the receiver is connected.
- Consult the dealer or an experienced radio/TV technician for help.

FCC Radiation Exposure Statement

This equipment complies with FCC radiation exposure limits set forth for an uncontrolled environment. This equipment should be installed and operated with a minimum distance of 20 cm between the radiator & your body.

ISED Warning

This device complies with Innovation, Science, and Economic Development Canada licence-exempt RSS standard(s). Operation is subject to the following two conditions:

1. this device may not cause interference, and
2. this device must accept any interference, including interference that may cause undesired operation of the device.

The device complies with RF exposure guidelines, users can obtain Canadian information on RF exposure and compliance. The minimum distance from the body to use the device is 20 cm.

Last Updated: 2/3/2022, 4:05:27 AM
