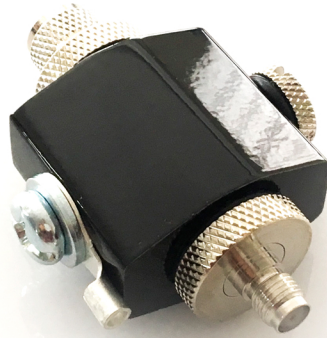


LP-24-01-02

In-Line Lightning Surge Protector



This lightning protector is available in different connector configurations, and serves as excellent in-line protection for any external mount antennas. Give your high-value GSM modems the level of protection they deserve, particularly in areas which are notorious for regular lightning strikes.

Mechanical Specifications

Body: Aluminium / Black Nickel

Connector:

- Body - Brass / Nickel Plated
- Contact - Brass / Gold Plated
- Insulator - Teflon
- Connector Type: N / SMA / TNC /
- REVERSE POLARITY

Operating Frequency: Up to 3GHz

VSWR:

- 1 GHz to 2 GHz : less than 1.2
- 2 GHz to 3 GHz : less than 1.5

Insertion Loss: Less than 0.2dB

DC Breakdown Voltage: 230 VDC / 350 VDC

Tolerance of DBV: $\pm 15\%$

Impulse Breakdown Voltage @ 1 KV / μs : $\leq 700V$ 5KV / M

AC Discharge Current @ 50Hz: 10A

Surge Discharge Current @ 10/100 μs 0~8/20 μs : 100A / 10KA

Insulation Resistance: 10,000 M Ω

Electrode Capacitance @ 1 MHz: ≤ 1.5