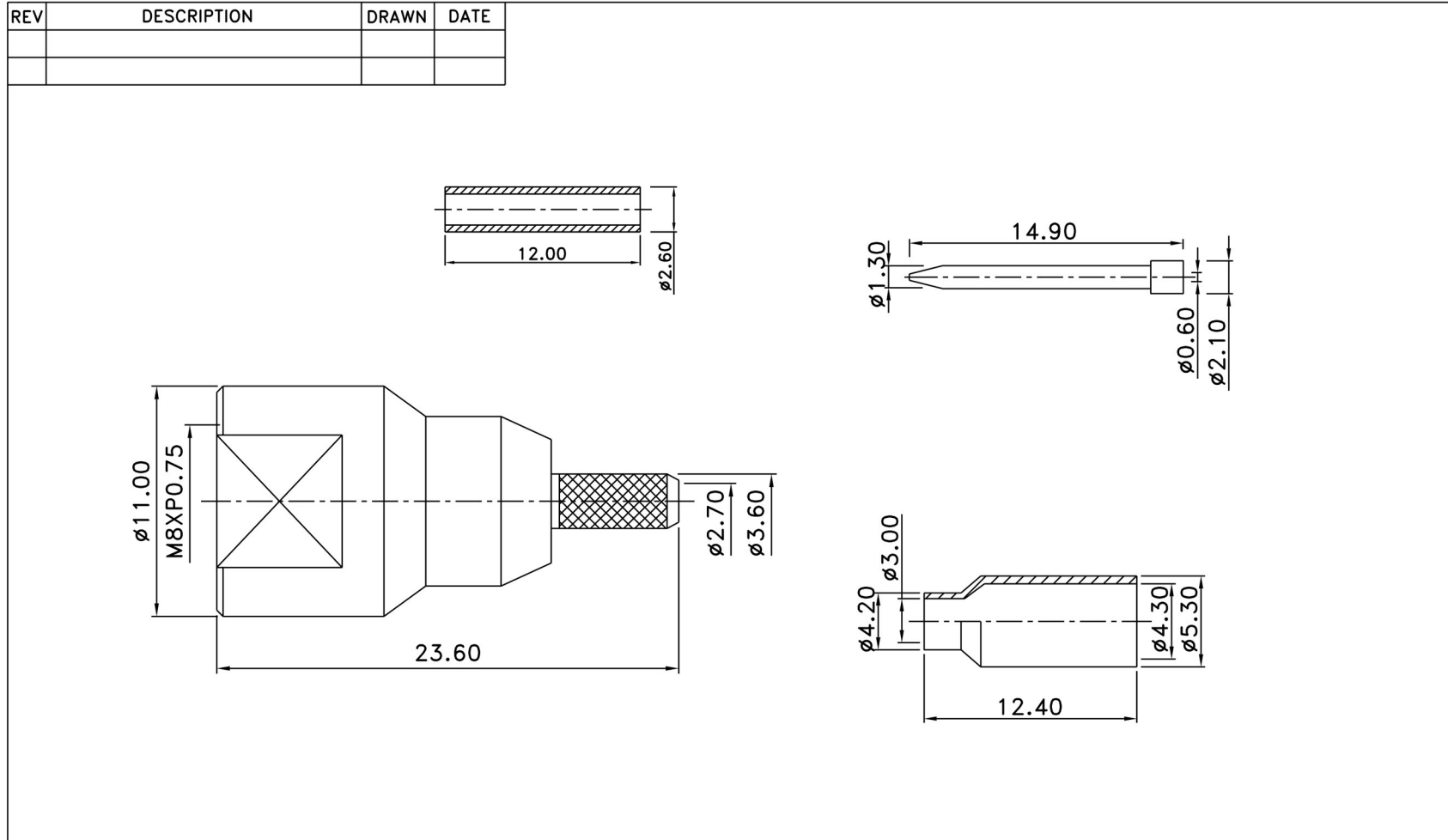



## FME-23-02-L-DGN FME plug straight crimp for RG174



5	Ferrule	1	Brass	Nickel	UNLESS OTHERWISE SPECIFIED 1.REMOVE ALL BURRS. 2.BREAK ALL CONNERS & EDGES CO.15 MAX. 3.CHAMFER 1ST & LAST THREADS 45° 4.DIAMETERS ON COMMON CENTERS. TO BE CONCENTRIC WITHIN 0.1 T.T.R. 5.ALL DIMENSIONS ARE AFTER PLATING.	* MAJOR DIMENSION UNLESS OTHERWISE NOTED TOLERANCES 0.5-6=±0.2 6-30=±0.4 30-120=±0.6 120-315=±1.0 ANGLES=±1°	APPROVED	 CHANG HONG TECHNOLOGY CO., LTD.
4	Ferrule	1	Brass	Nickel			CHECKED	
3	Dielectric	1	Delrin	None			DRAWN	
2	Pin	1	Brass	Gold			andrew	
1	Body	1	Brass	Nickel			andrew	
NO	Description	Q'ty	Material	Finish	SCALE 4/1	UNIT MM	DRAWN DATE 03/04/02	TITLE FME MALE CRIMP FOR RG174 DRAWING NO. FME-23-02-L-DGN REV A FILE NO.