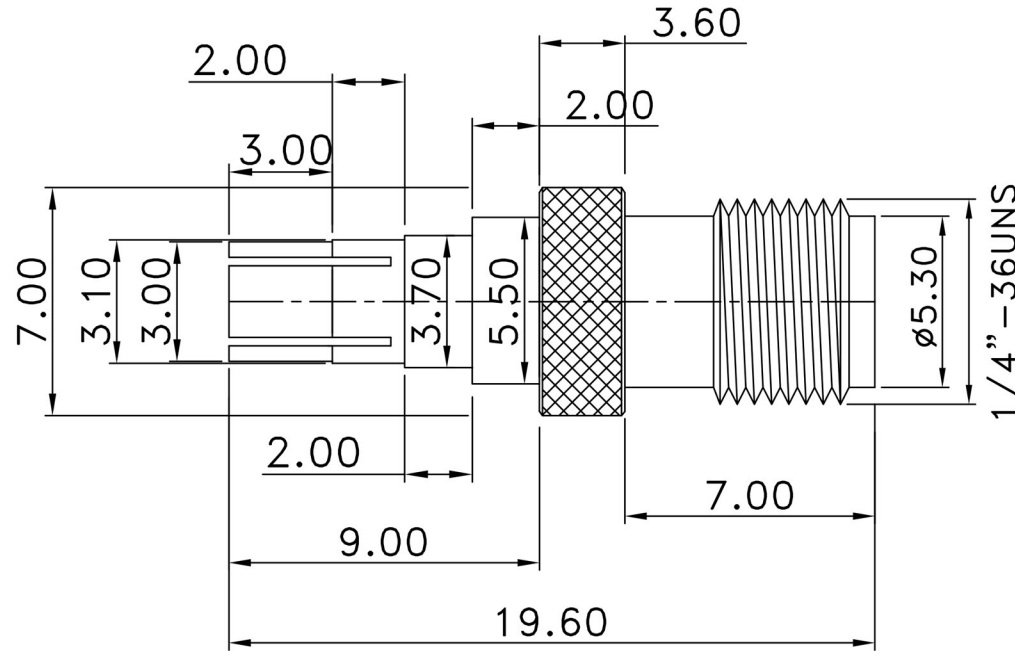




58 Wakis Avenue, Strijdompark, Randburg 2155, Johannesburg
 Tel: +27 11 791 1033 | Fax: +27 11 791 1187 | wireless@otto.co.za | www.otto.co.za

CRC9-75-07-TGN CRC9 plug to SMA female antenna adaptor

REV	DESCRIPTION	DRAWN	DATE



4	DIELECTRIC	1	TEFLON	NONE	UNLESS OTHERWISE SPECIFIED 1.REMOVE ALL BURRS. 2.BREAK ALL CORNERS & EDGES CO.15 MAX. 3.CHAMFER 1ST & LAST THREADS 45° 4.DIAMETERS ON COMMON CENTERS. TO BE CONCENTRIC WITHIN 0.1 T.P.R. 5.ALL DIMENSIONS ARE AFTER PLATING.	* MAJOR DIMENSION UNLESS OTHERWISE NOTED TOLERANCES 0,5-6=±0.2 6-30=±0.4 30-120=±0.6 120-315=±1.0 ANGLES=±1°	APPROVED	 CHANG HONG TECHNOLOGY CO., LTD. TITLE CRC9 MALE TO SMA FEMALE DRAWING NO. CRC9-75-07-TGN REV A FILE NO.
3	PIN	1	PHOS BRONZE	GOLD			CHECKED	
2	BODY	1	BERYLLIUM	NICKEL			DRAWN	
1	BODY	1	BRASS	NICKEL			andrew	
NO	Description	Qty	Material	Finish			SCALE 6/1	