



The Dragon's Head



NTANOS

THE
**CARDBOARD
KINGDOM**



THE CARDBOARD KINGDOM

THE DRAGON'S HEAD!

Papercraft design by Kostas Ntanos

Based on The Dragon's Head from *The Cardboard Kingdom*

WHAT YOU WILL NEED

- An adult to help you with cutting and gluing.
- Access to a printer and copy paper to print out the patterns.
- Construction paper or thin card stock: 130lb Cover or 300gsm is ideal.
- Double-sided tape or fast drying glue.
- Scissors.
- Ruler.
- Clear tape. (You may want to reinforce some parts on the inside.)
- Plenty of time to be crafty! You don't want to rush this project!

HOW TO PRINT THE PATTERNS

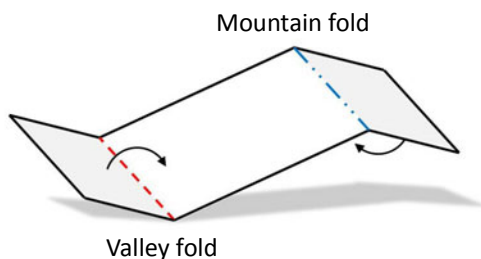
Print the patterns in full size on US Letter (8½" X 11") paper. Check your printer settings to make sure you have selected 'Actual size' and not 'Fit' and that you print one sided. There is a reference bar on the first page of the diagrams that should measure five inches if printed at the correct size.

ASSEMBLE THE DRAGON'S HEAD

Trim the extra paper roughly around each piece of the pattern so that you can arrange them on the card stock efficiently.

Glue the pieces to the card stock very thoroughly. **Remember that the patterns will be on the inside of the finished project!**

Cut out the pieces along the solid outlines. Do not cut the dashed lines. The dashed lines represent valley folds (in red) and the dashed with dots lines (in blue) represent mountain folds.



Score all the valley and mountain folds using either the corner of your ruler, a butter knife, scissors, or pen that's run out of ink. Fold all the scored lines well to create sharp folds.

Find the matching numbers and start connecting the pieces by sticking each flap to the edge with the same number. The flaps always go on the **inside** of the design. (The sequence of numbers does not correspond to the order of gluing.)



CHALLENGE LEVEL:
Difficult

TIP: We suggest using either double sided tape or an extra strength glue stick.

TIP: Glue the patterns very evenly to the card stock – if there are loose parts, that could cause problems later!

TIP: Connect all the matching number tabs within each piece before you start connecting other pieces.

TIP: Assembling the folded pieces can be very tricky. Take your time and consult the diagrams!

DECORATE

Decorate your creation however you want! You don't need to make everything look exactly like you see it in *The Cardboard Kingdom*. You can use different colors of card stock for the whole mask or for different pieces. You can paint the mask using spray paint or acrylics and even glue things like glitter, feathers, and fabric!

SAFETY WARNING

Do not create this design without adult supervision! And please be careful if you play in costume – there are pointy edges that could harm yourself or others!

TERMS AND CONDITIONS

This design is copyrighted and is intended for your own personal use only. If you want to share the design with others, please direct them to ntanos.co.uk so they can download the files there!

SHARE YOUR WORK!

We would love to see your costumes and creations! Use #thecardboardkcosplay on social media and tag @kntanos and @thecardboardk on Instagram or Twitter!

EVERYONE IS WELCOME IN THE CARDBOARD KINGDOM!

The Cardboard Kingdom team embraces creativity and diversity. We encourage you to dress like whichever character you want, regardless of how they appear in the book. Or you can create your own character! We're excited to see what you come up with!

GOOD LUCK, AND WELCOME TO THE CARDBOARD KINGDOM!



Kostas Ntanos designs innovative papercraft masks for a wide variety of clients and occasions.

ntanos.co.uk

@kntanos on Instagram
[facebook.com/kntanos](https://www.facebook.com/kntanos)

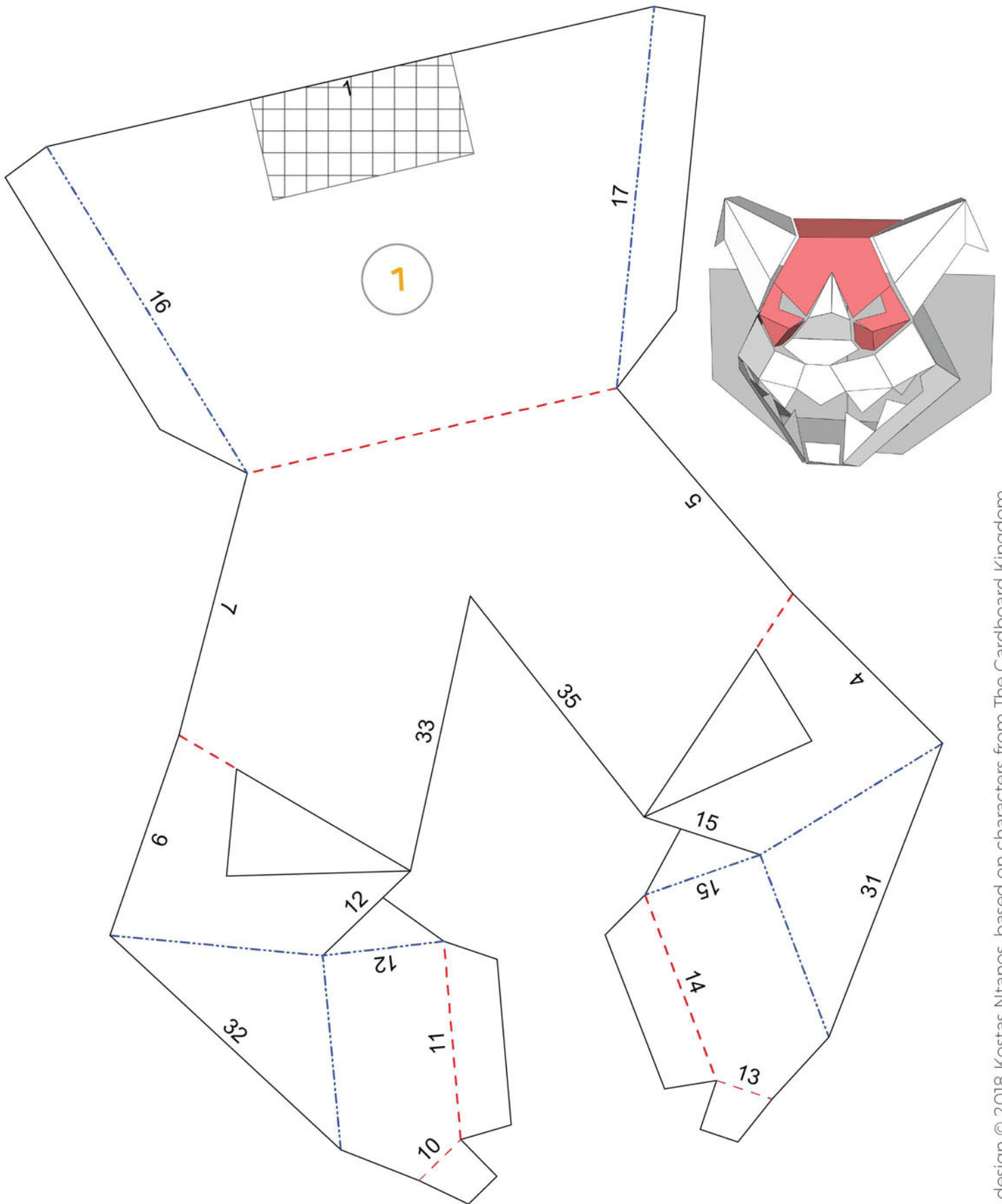


The Cardboard Kingdom is a graphic novel published by Knopf Books for Young Readers.

thecardboardkingdom.com

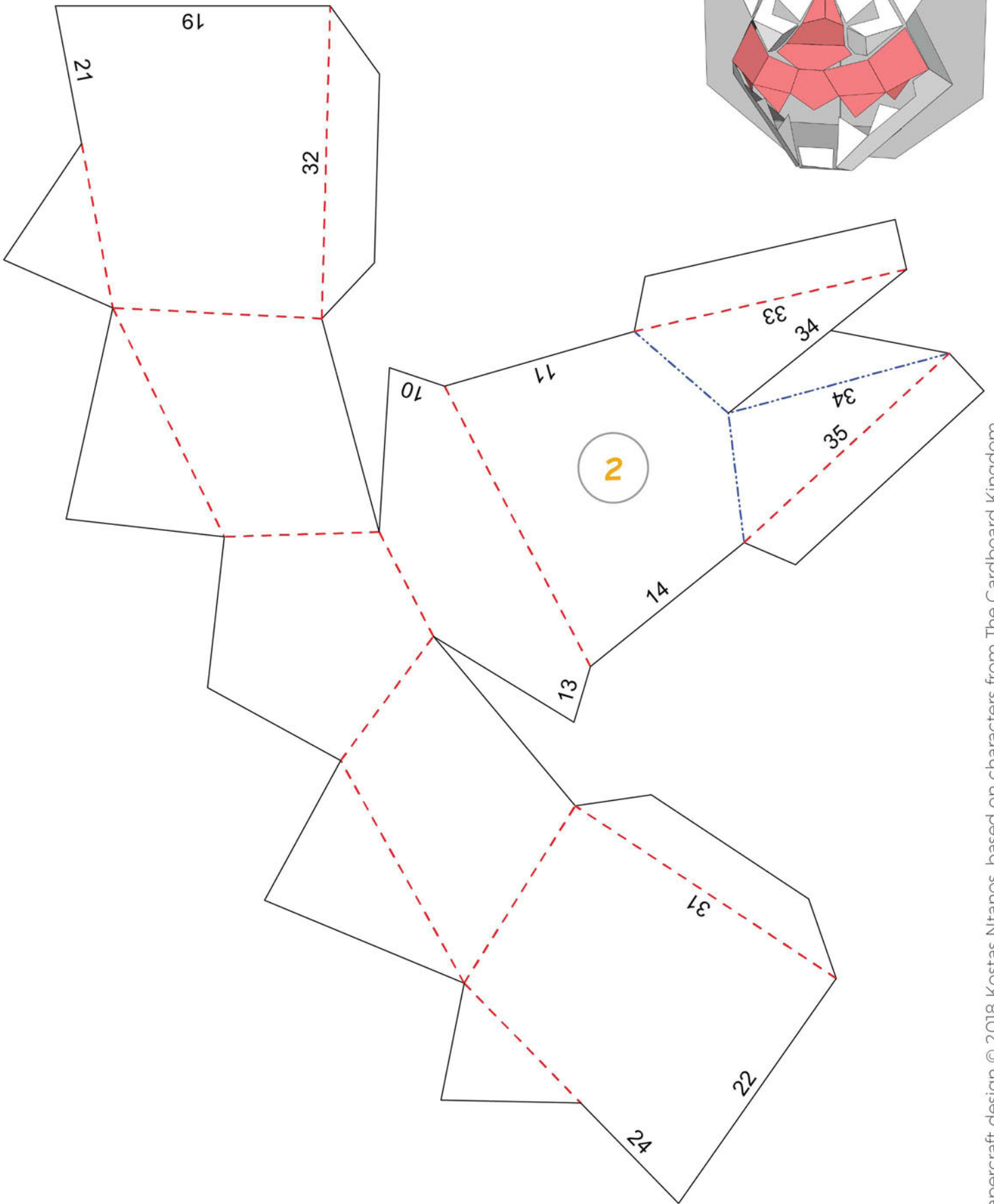
@thecardboardK on Instagram
and Twitter

THE DRAGON'S HEAD

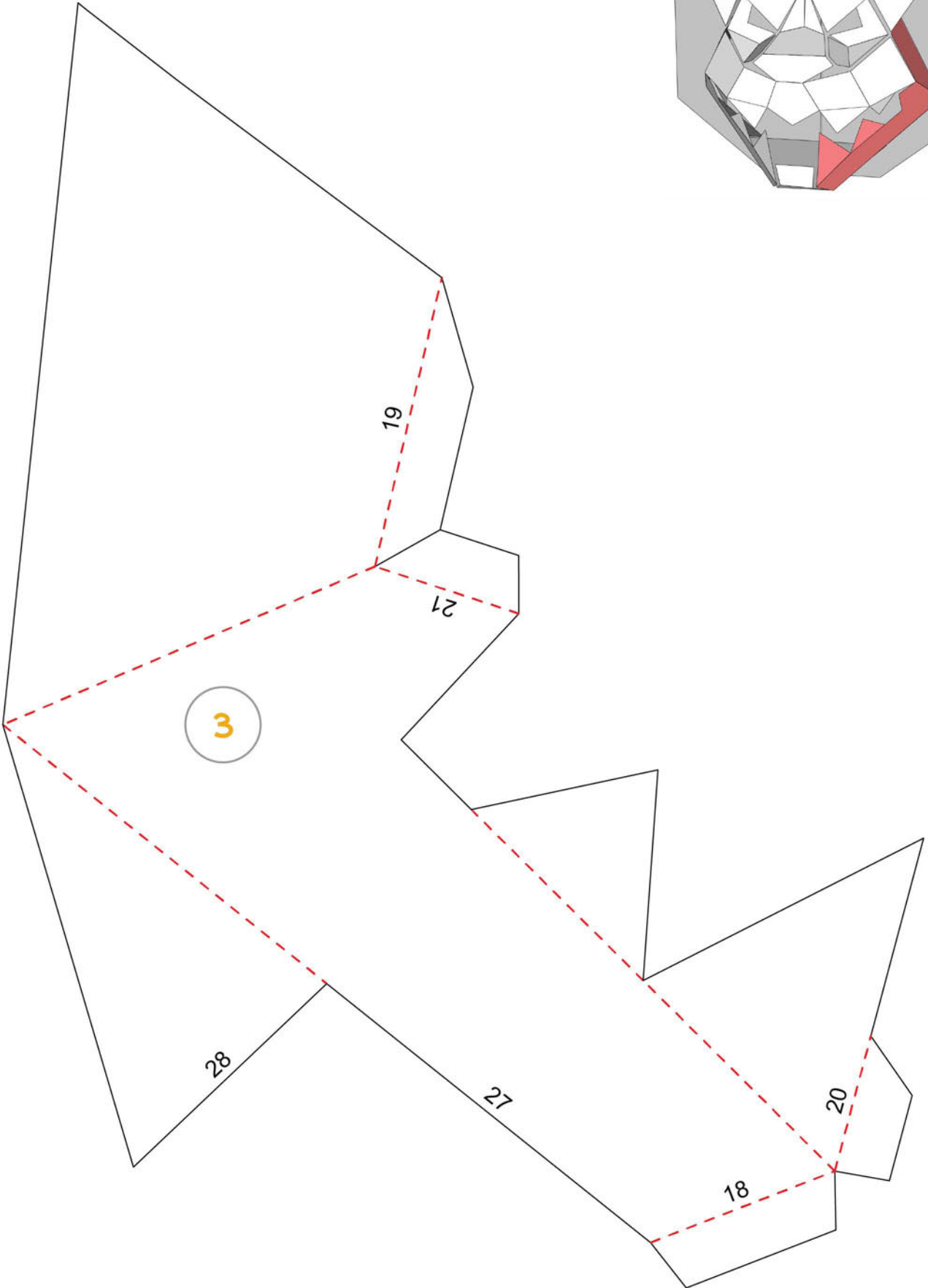
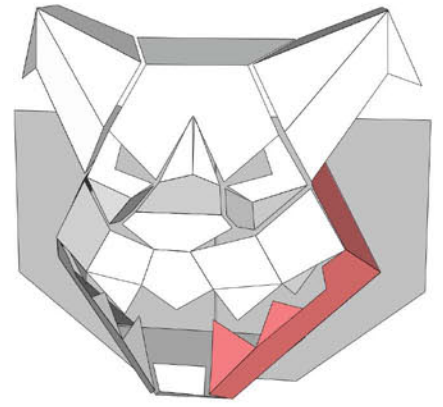


To check the scale, this line should measure 5 inches, when printed

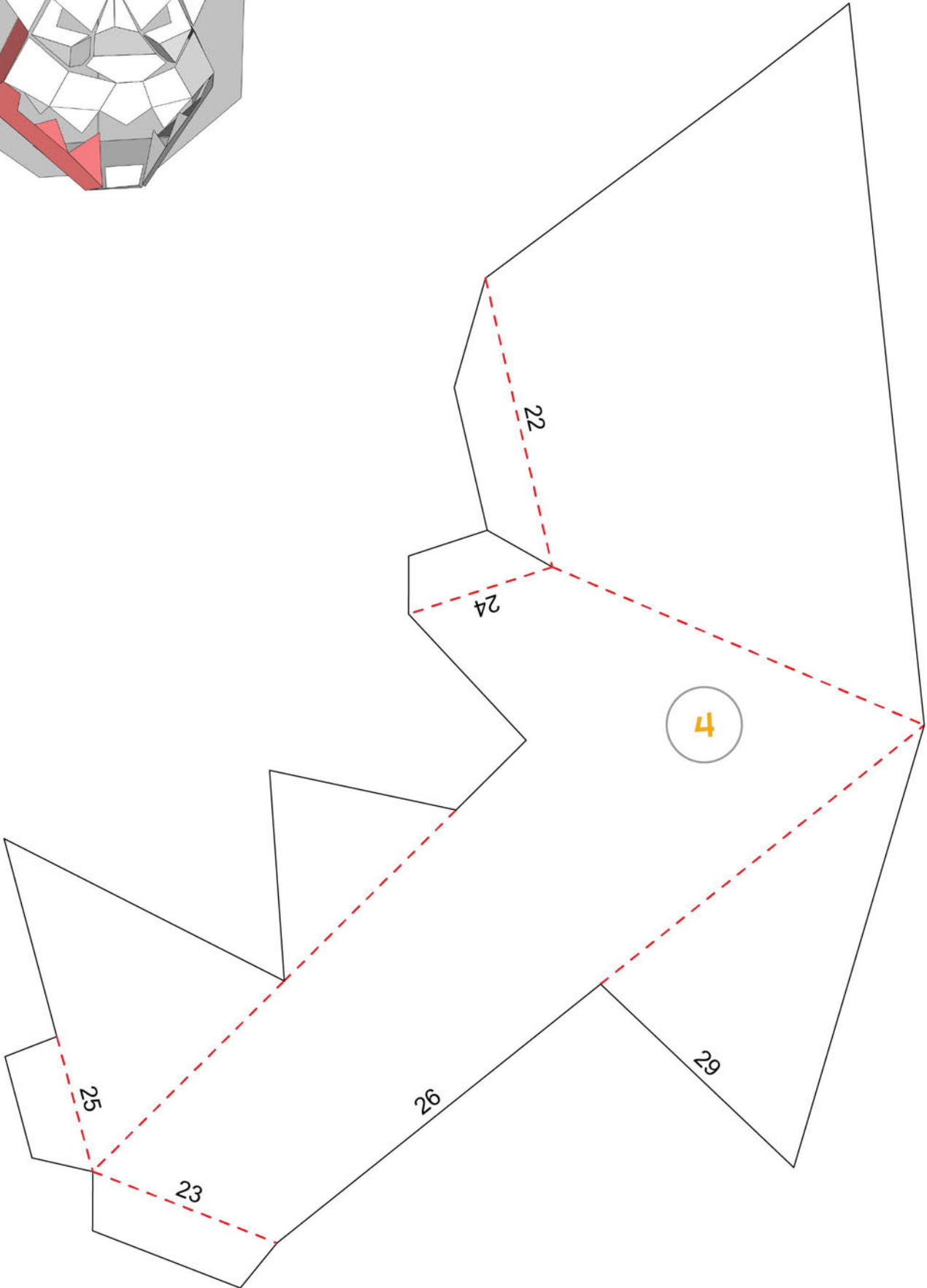
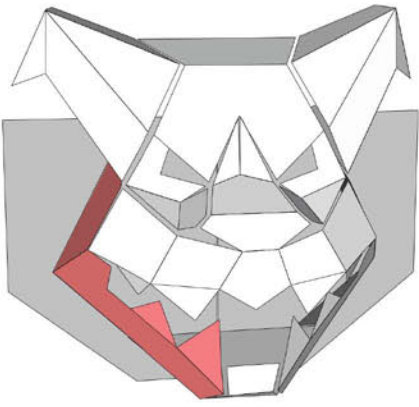
THE DRAGON'S HEAD



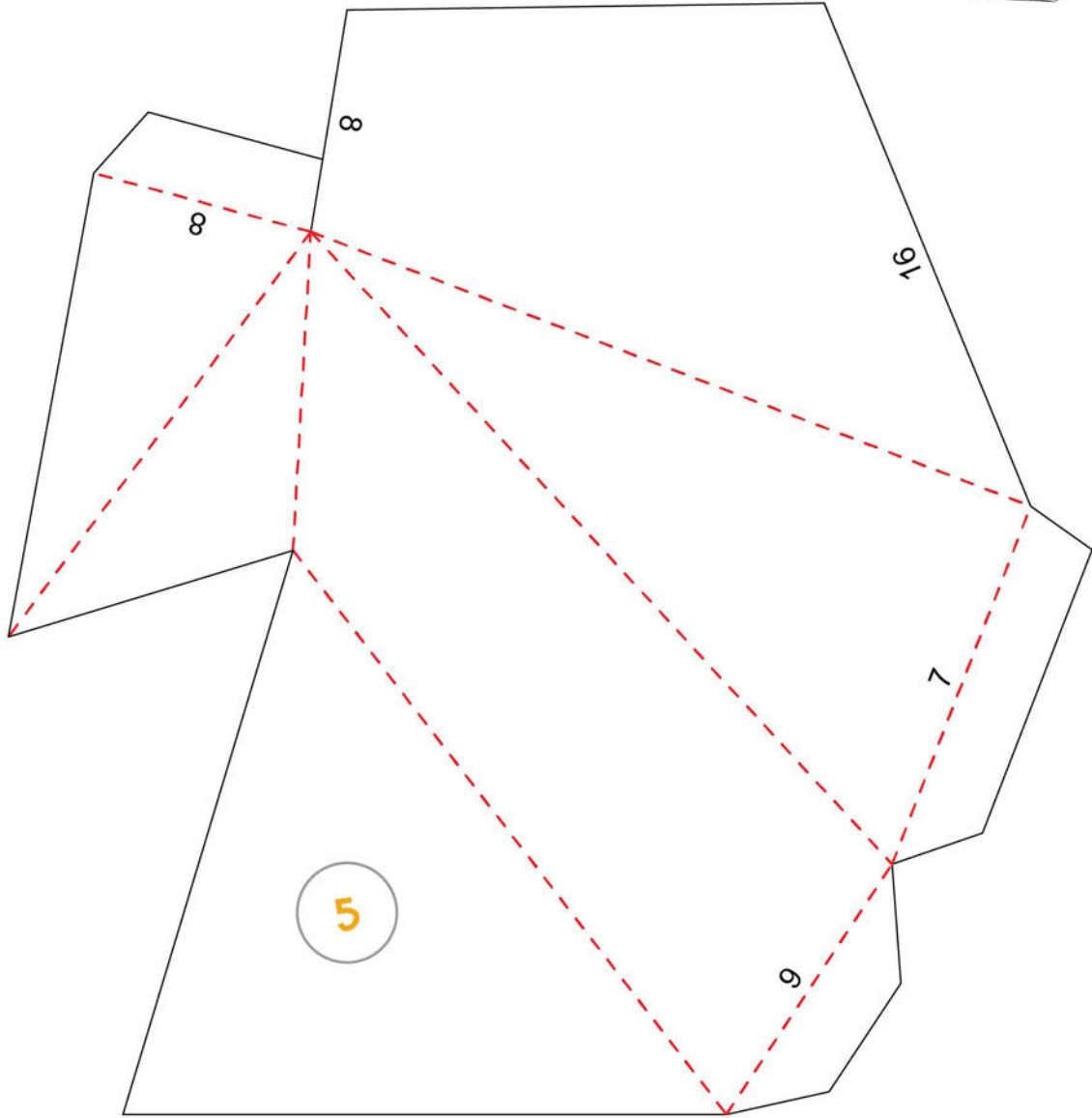
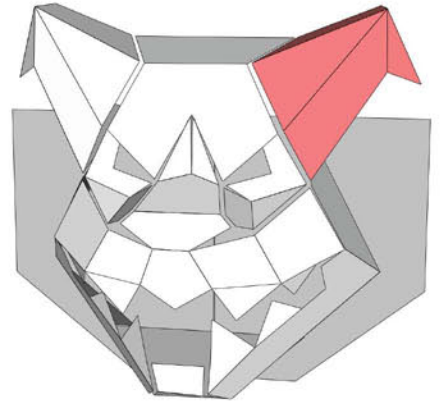
THE DRAGON'S HEAD



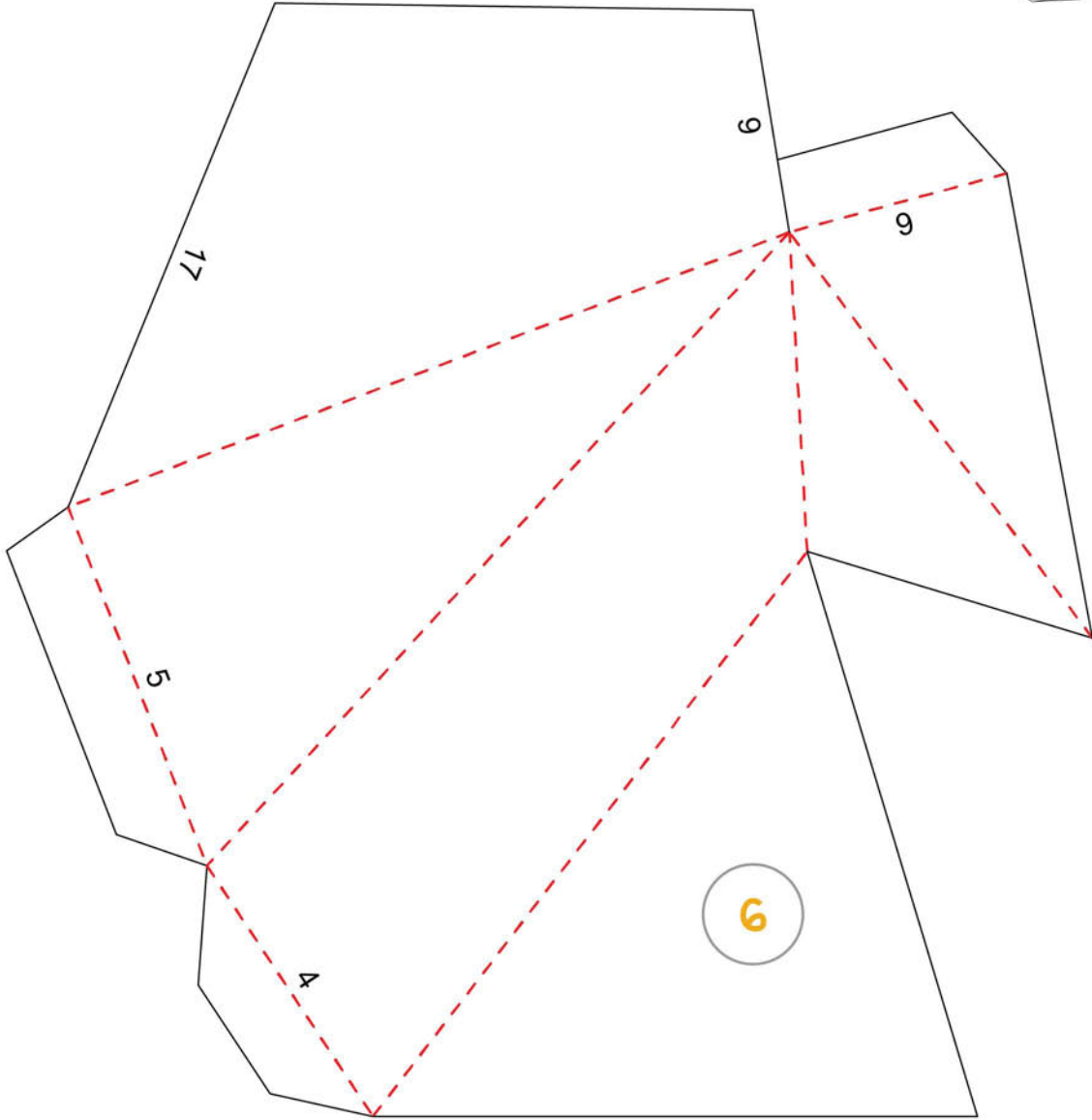
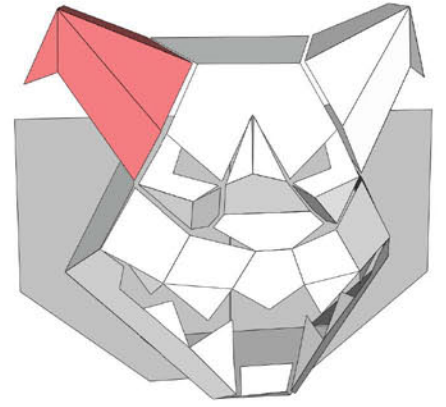
THE DRAGON'S HEAD



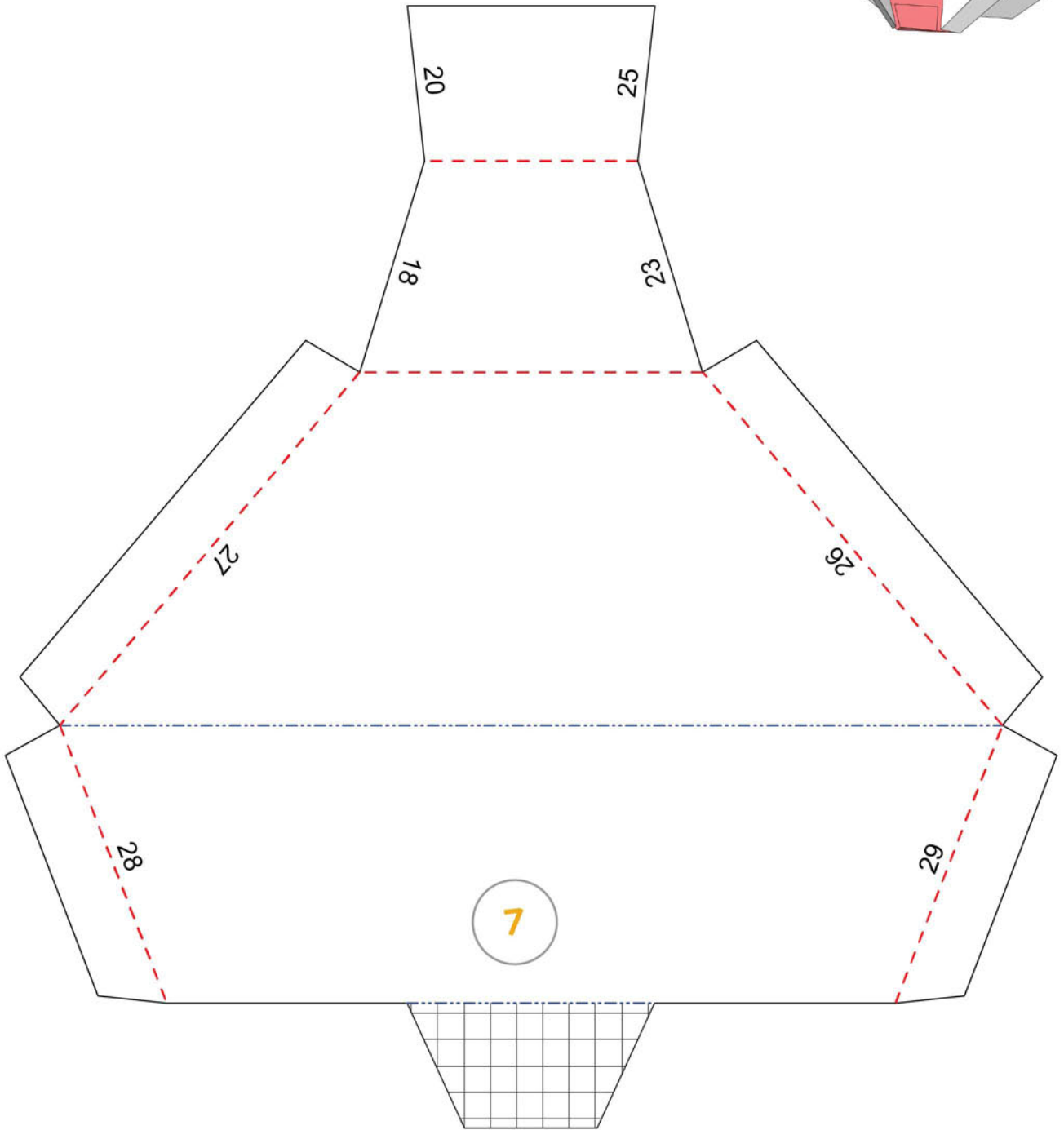
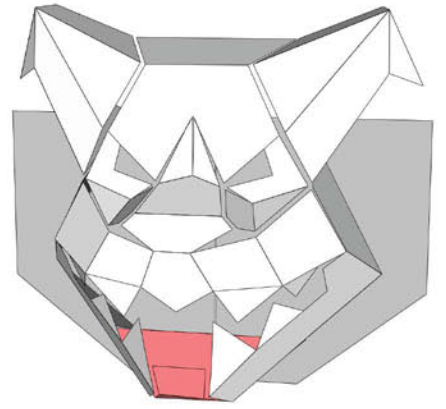
THE DRAGON'S HEAD



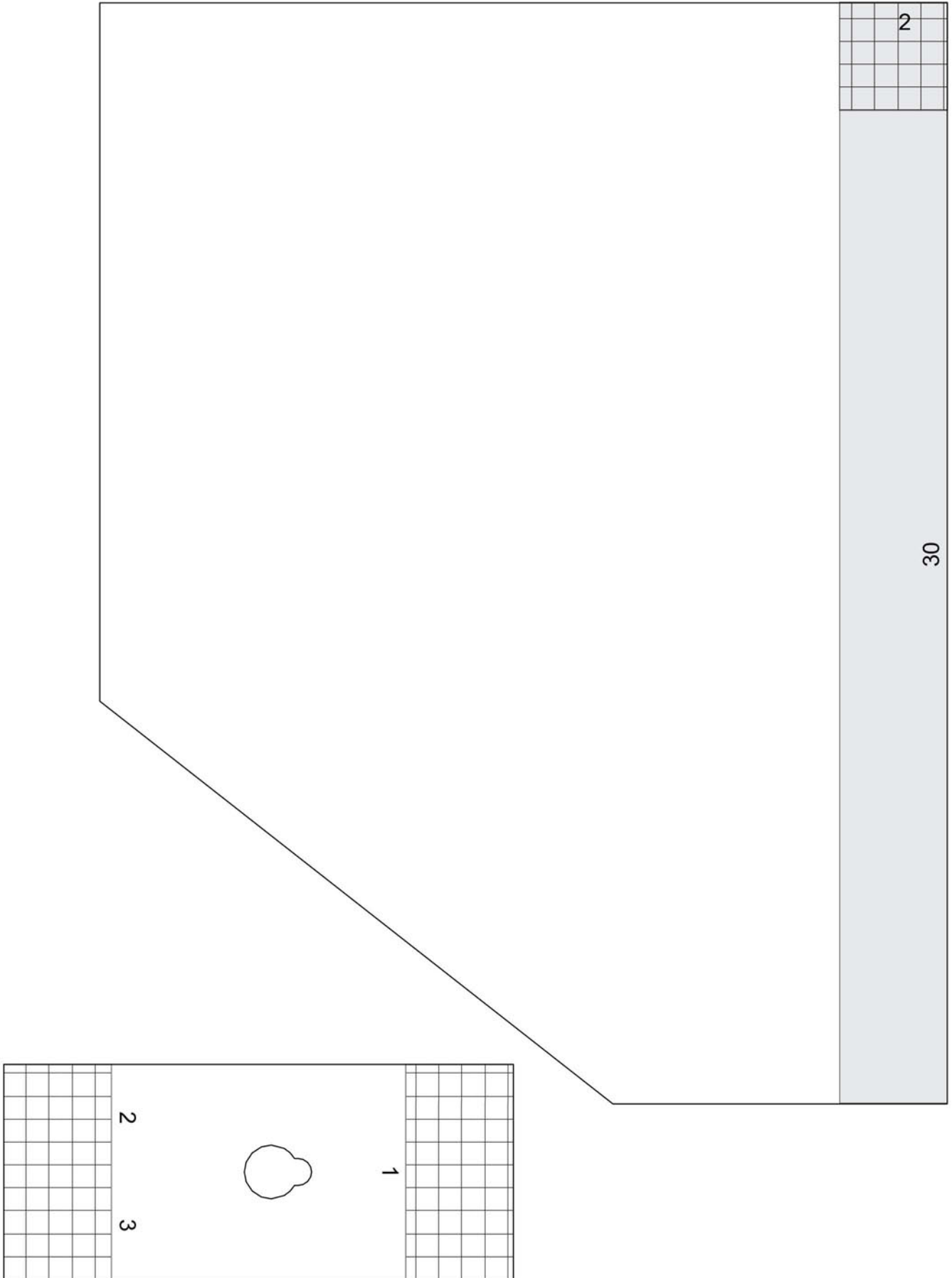
THE DRAGON'S HEAD



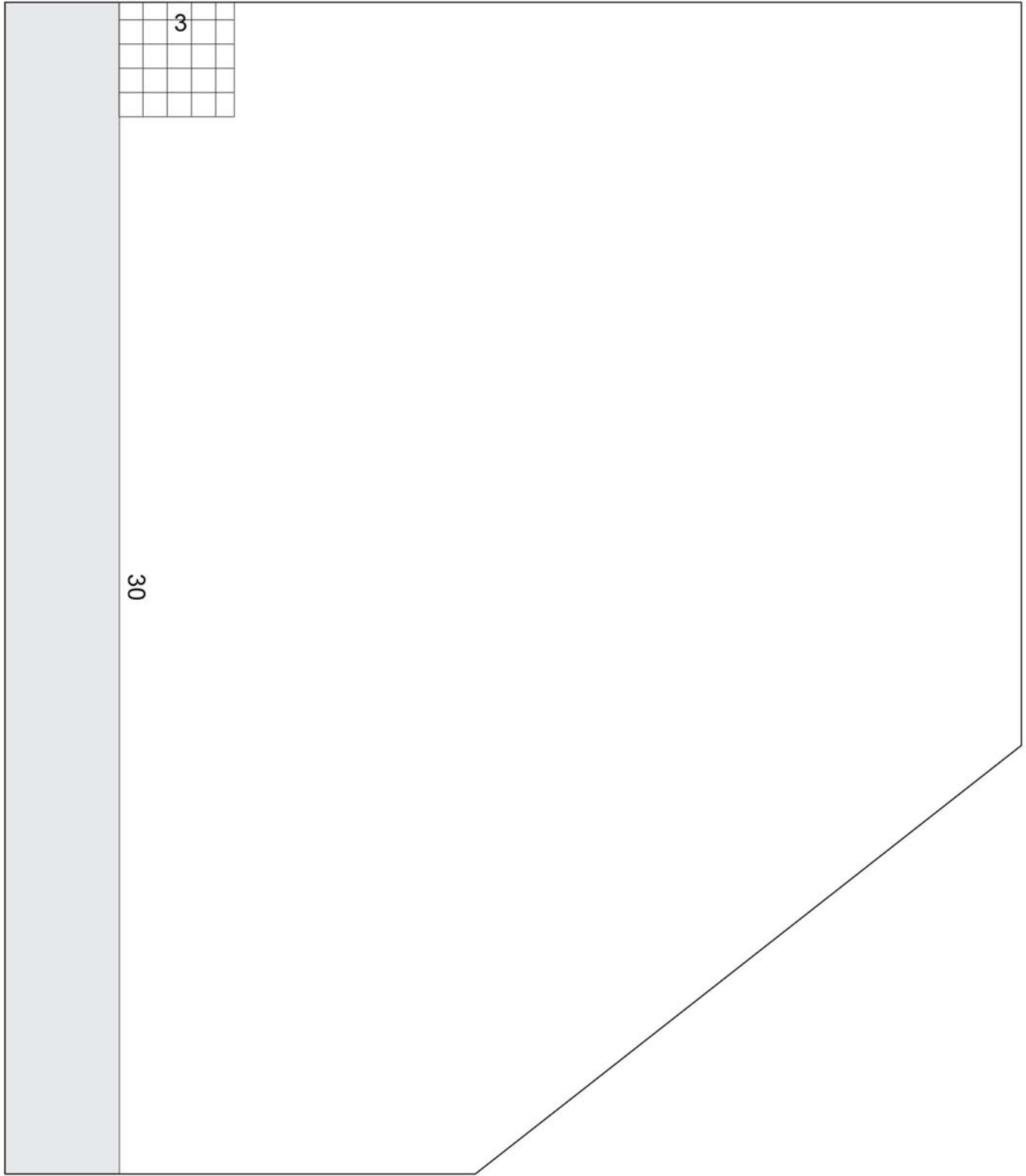
THE DRAGON'S HEAD



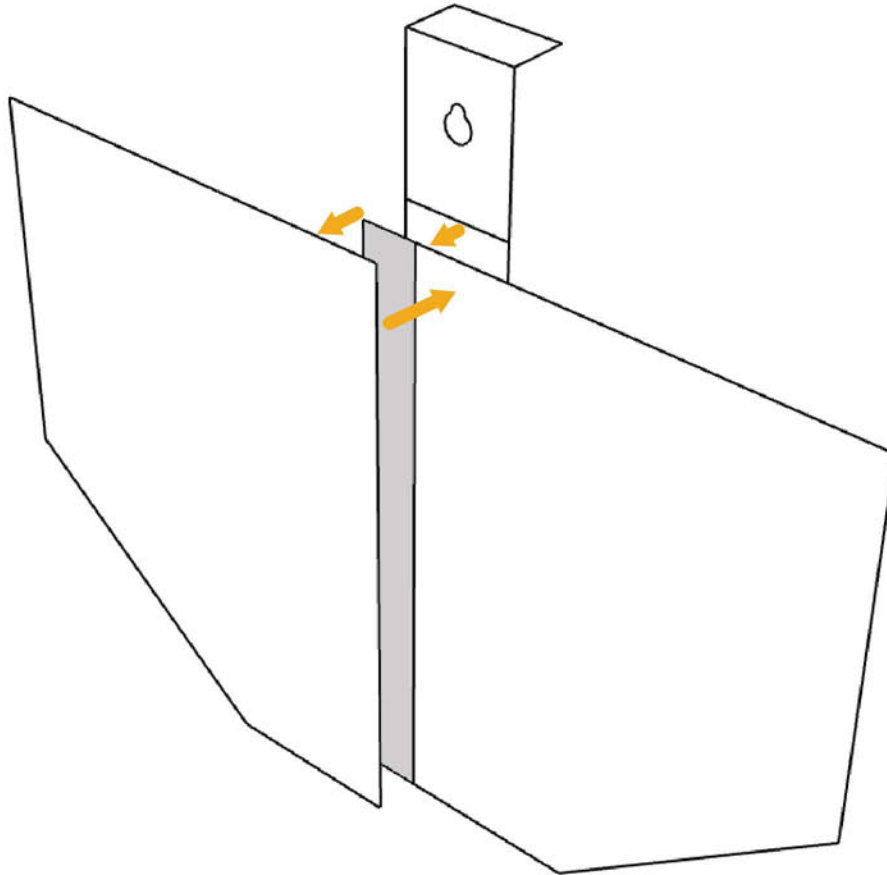
THE DRAGON'S HEAD (WALL MOUNT)



THE DRAGON'S HEAD (WALL MOUNT)



THE DRAGON'S HEAD



To make the wall mount, first glue the two big pieces along the grey area and then the small piece in the middle, where it is indicated by the hashed areas.

Remember to have the pattern on the back of the mount.

After that, first glue the top to piece No.1 on the hashed area and then apply some glue on the hashed area at the bottom of piece No.7 and glue it on the mount.