



# Big Banshee



NTANOS

THE  
**CARDBOARD  
KINGDOM**



# THE CARDBOARD KINGDOM

## BIG BANSHEE!

Papercraft design by Kostas Ntanos

Based on Big Banshee from *The Cardboard Kingdom*

## WHAT YOU WILL NEED

- An adult to help you with cutting and gluing.
- Access to a printer and copy paper to print out the patterns.
- Cereal boxes or thin card stock: 130lb Cover or 300gsm is ideal.
- Double-sided tape or fast drying glue.
- Scissors.
- Ruler.
- String, ribbon, or elastic to hold the top piece in place.
- Clear tape. (You may want to reinforce some parts on the inside.)
- Plenty of time to be crafty! You don't want to rush this project!

## HOW TO PRINT THE PATTERNS

Print the patterns in full size on US Letter (8½" X 11") paper. Check your printer settings to make sure you have selected 'Actual size' and not 'Fit' and that you print one sided. There is a reference bar on the first page of the diagrams that should measure five inches if printed at the correct size.

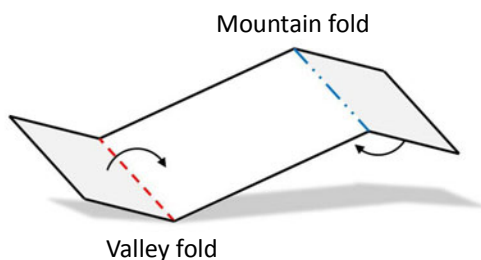
**A special note on size:** This design will probably fit most children and adults!

## ASSEMBLE THE MASK

Trim the extra paper roughly around each piece of the pattern so that you can arrange them on the card stock efficiently.

Glue the pieces to the card stock very thoroughly. **Remember that the patterns will be on the inside of the finished project!**

Cut out the pieces along the solid outlines. Do not cut the dashed lines. The dashed lines represent valley folds (in red) and the dashed with dots lines (in blue) represent mountain folds.



Score all the valley and mountain folds using either the corner of your ruler, a butter knife, scissors, or pen that's run out of ink. Fold all the scored lines well to create sharp folds.

Find the matching numbers and start connecting the pieces by sticking each flap to the edge with the same number. The flaps always go on the **inside** of the mask. (The sequence of numbers does not correspond to the order of gluing.)



**CHALLENGE LEVEL:**  
Easy

**TIP:** We suggest using either double sided tape or an extra strength glue stick.

**TIP:** Thin elastic string is the best way to get a good fit!

**TIP:** Glue the patterns very evenly to the card stock – if there are loose parts, that could cause problems later!

**TIP:** Connect all the matching number tabs within each piece before you start connecting other pieces.

**TIP:** Assembling the folded pieces can be very tricky. Take your time and consult the diagrams!

**TIP:** Before making the holes, put a piece of tape inside the mask to reinforce the card stock.

Make two small holes where indicated. Put a piece of string, ribbon or elastic through the holes and secure with a knot and some tape.

## DECORATE

Decorate your creation however you want! You don't need to make everything look exactly like you see it in *The Cardboard Kingdom*. You can use different colors of card stock for the whole mask or for different pieces. You can paint the mask using spray paint or acrylics and even glue things like glitter, feathers, and fabric!

## SAFETY WARNING

Do not create this design without adult supervision! And please be careful if you play in costume – there are pointy edges that could harm yourself or others!

## TERMS AND CONDITIONS

This design is copyrighted and is intended for your own personal use only. If you want to share the design with others, please direct them to [ntanos.co.uk](http://ntanos.co.uk) so they can download the files there!

## SHARE YOUR WORK!

We would love to see your costumes and creations! Use #thecardboardkcosplay on social media and tag @kntanos and @thecardboardk on Instagram or Twitter!

## EVERYONE IS WELCOME IN THE CARDBOARD KINGDOM!

The Cardboard Kingdom team embraces creativity and diversity. We encourage you to dress like whichever character you want, regardless of how they appear in the book. Or you can create your own character! We're excited to see what you come up with!

**GOOD LUCK, AND WELCOME TO THE CARDBOARD KINGDOM!**



Kostas Ntanos designs innovative papercraft masks for a wide variety of clients and occasions.

[ntanos.co.uk](http://ntanos.co.uk)

@kntanos on Instagram  
[facebook.com/kntanos](https://www.facebook.com/kntanos)

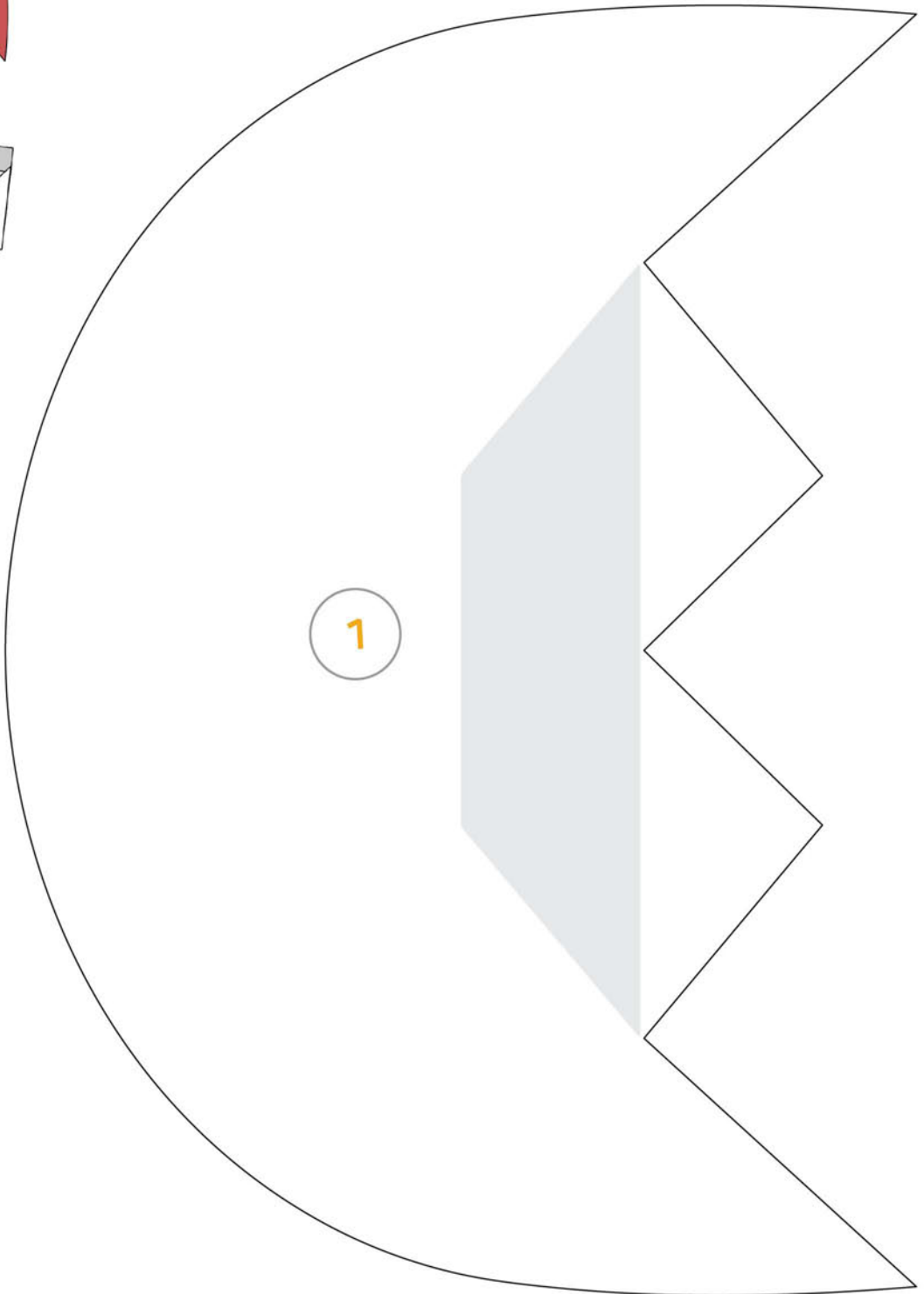
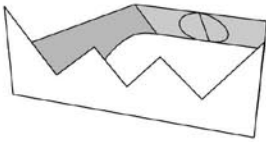
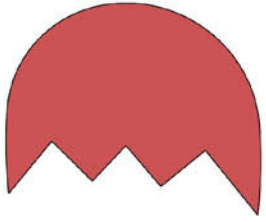


*The Cardboard Kingdom* is a graphic novel published by Knopf Books for Young Readers.

[thecardboardkingdom.com](http://thecardboardkingdom.com)

@thecardboardK on Instagram  
and Twitter

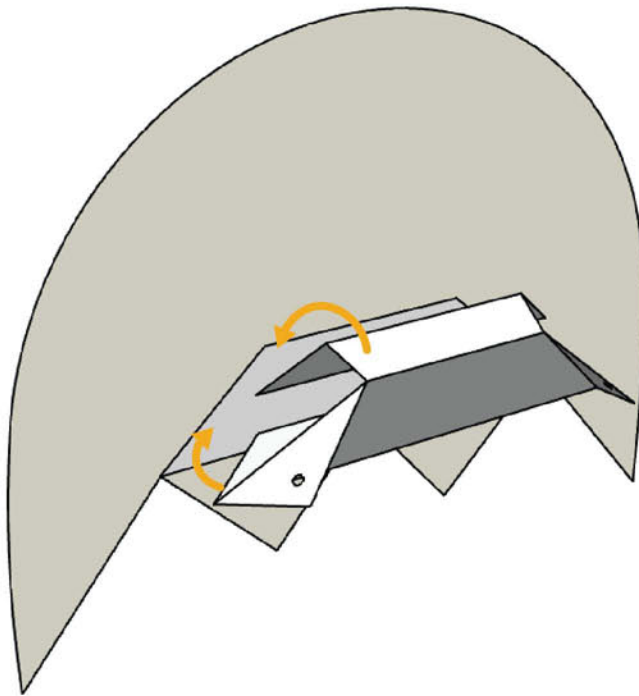
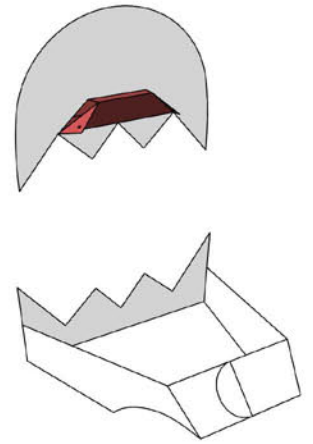
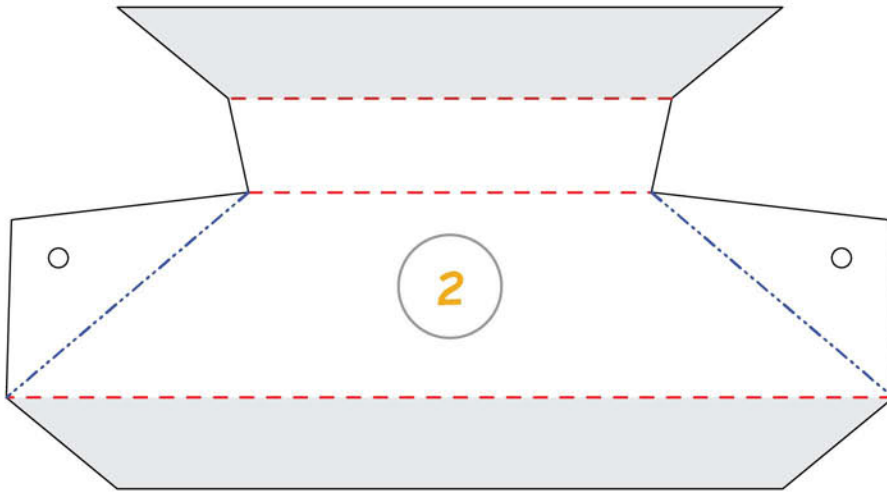
# BIG BANSHEE



---

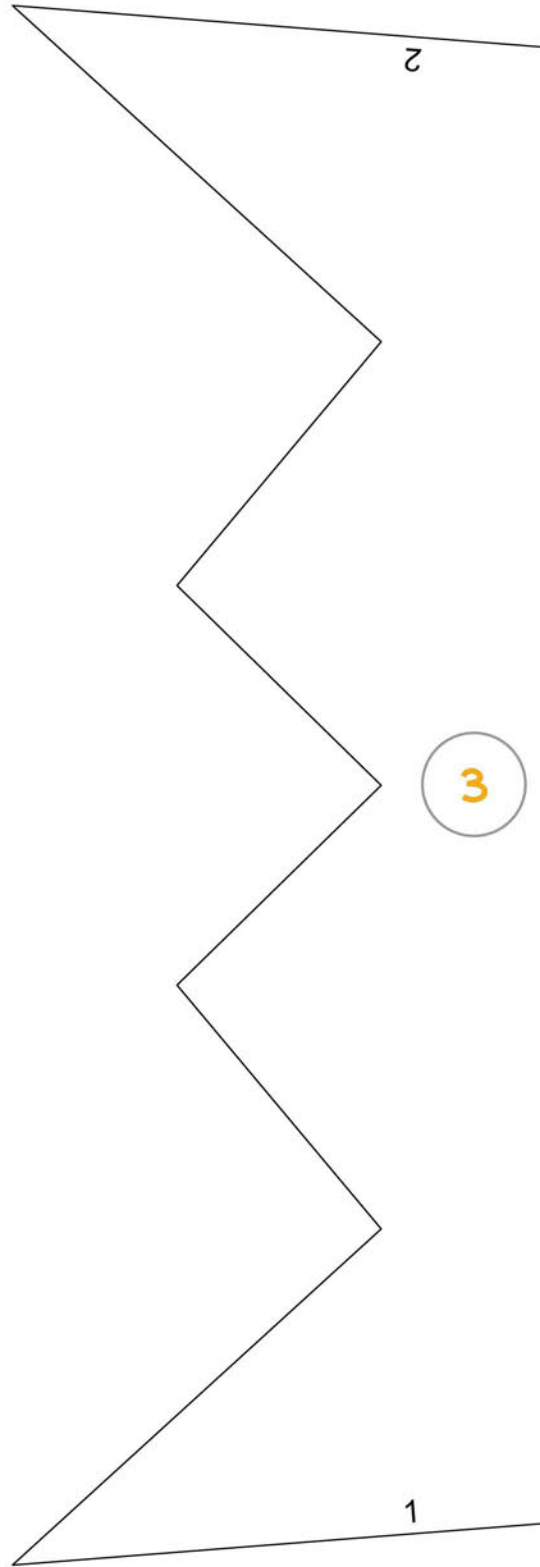
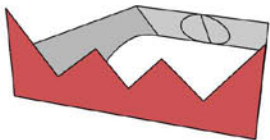
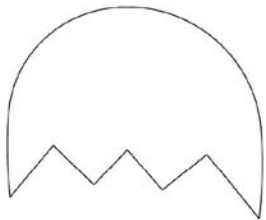
To check the scale, this line should measure 5 inches, when printed

## BIG BANSHEE

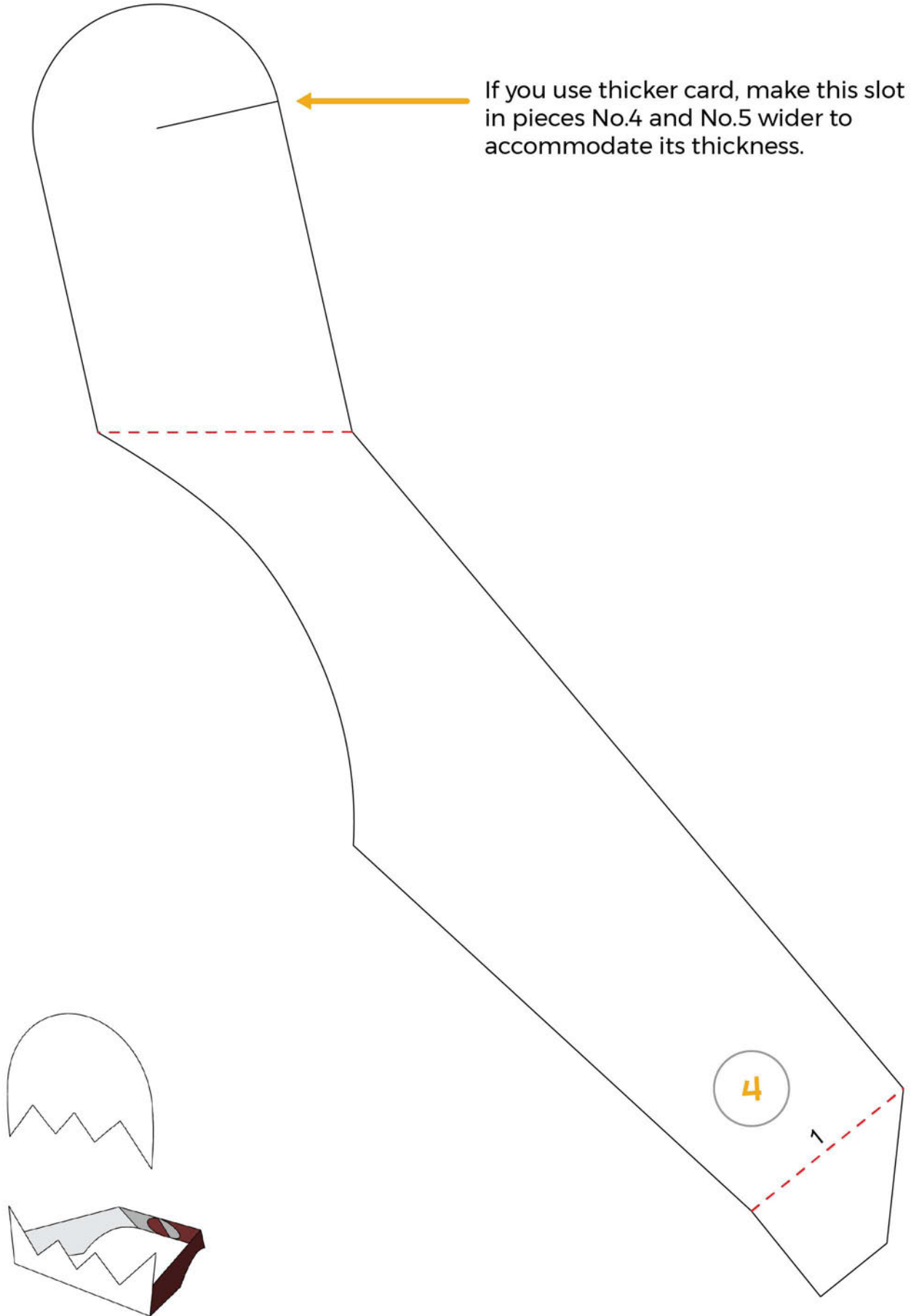


Fold piece No.2 and glue the grey areas on the grey area of piece No.1  
Note that the pattern will be on the inside of piece No.2  
Use a pencil to reach inside piece No.2, so you can press against piece No.1 to glue it firmly.

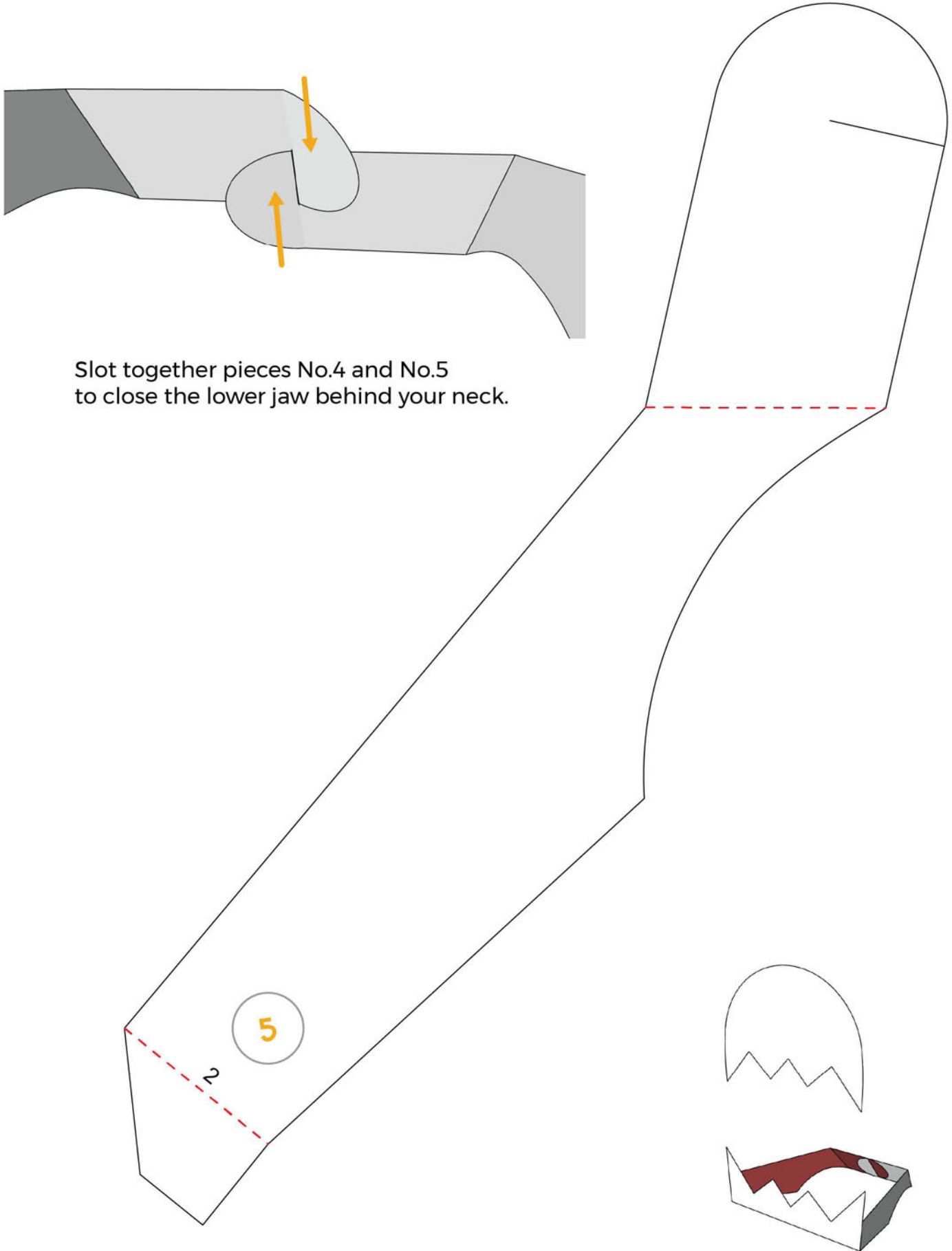
# BIG BANSHEE



# BIG BANSHEE



# BIG BANSHEE





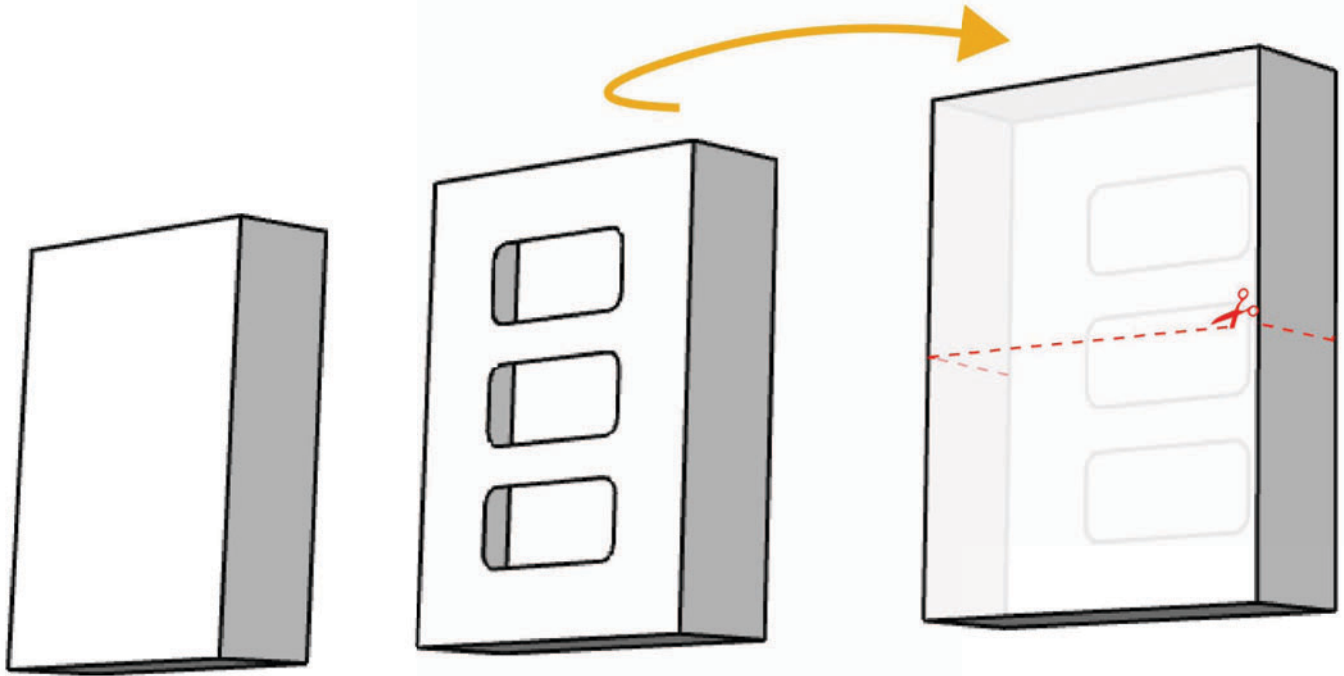
## BIG BANSHEE

### HOW TO CREATE BIG BANSHEE'S FISTS!

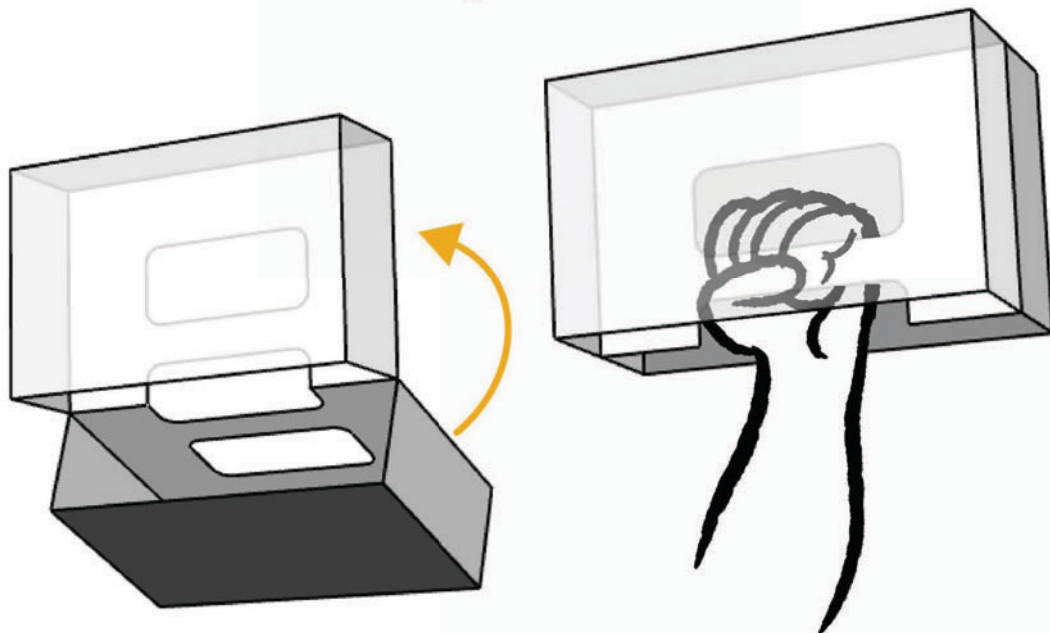
You will need two cereal boxes of approximately the same size.

Use the attached template to cut three holes on one side of the box. (The middle hole should be halfway between the top and bottom of the box.)

You will then cut along 3 of the 4 sides around the middle. **Do not cut across the side with the holes!**

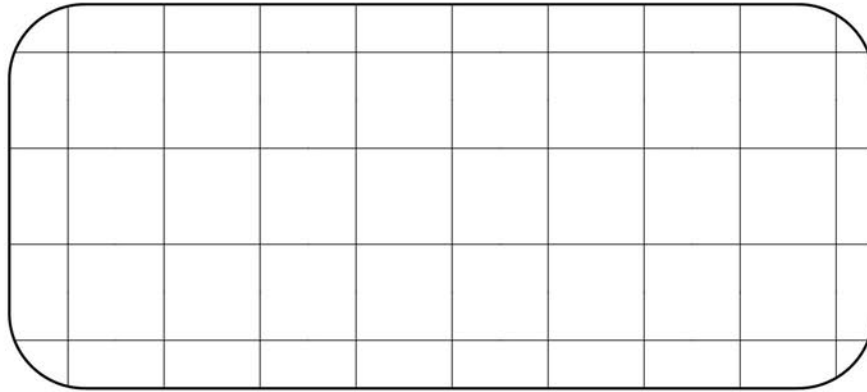


You can then fold the box and glue the two halves together!

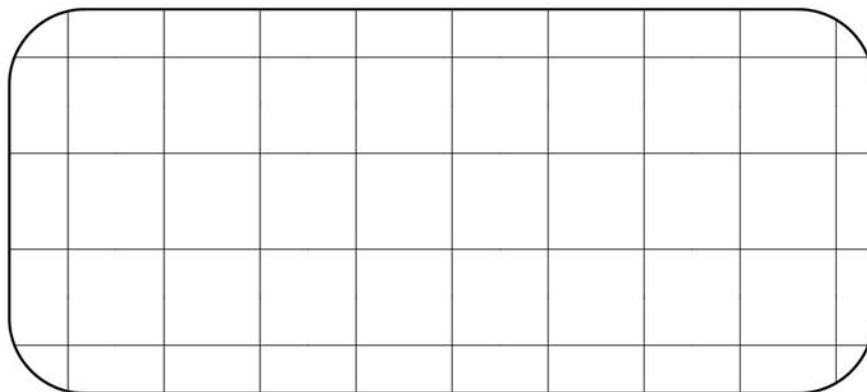
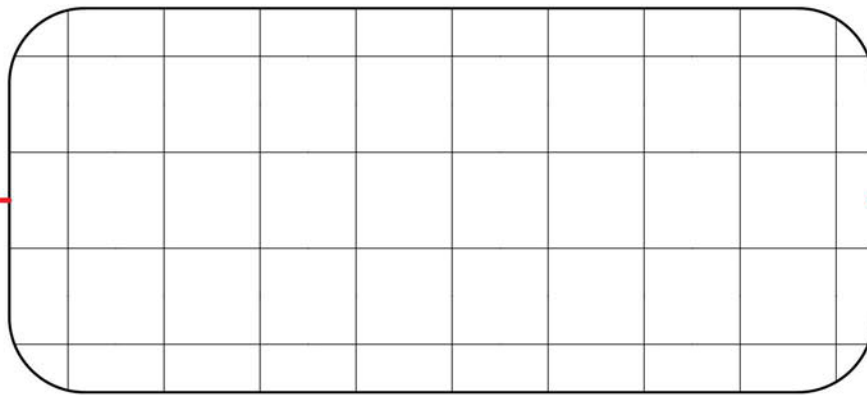


# BIG BANSHEE

Use this template to help cut holes into your cereal boxes for Big Banshee's fists.



This dashed line should be halfway between the top and bottom of your box!

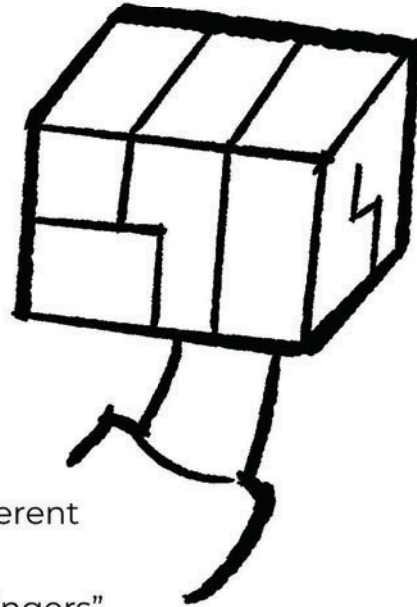
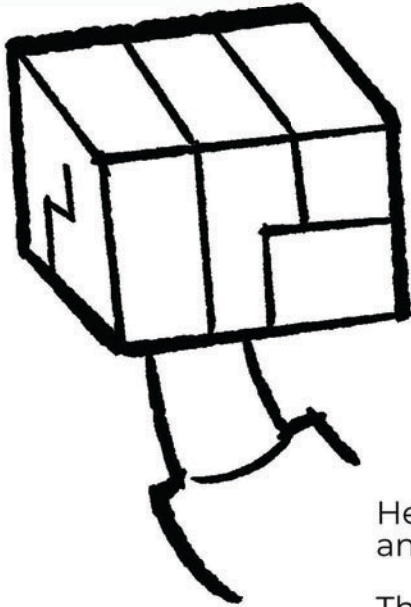


# BIG BANSHEE

## DECORATING BIG BANSHEE'S FISTS:

You will need to either paint the finished fists or cover them with colored paper.

Drawing the "fingers" of the fists can be a little tricky.



Here are some different angles to help!

There aren't any "fingers" drawn on the back of each fist.

