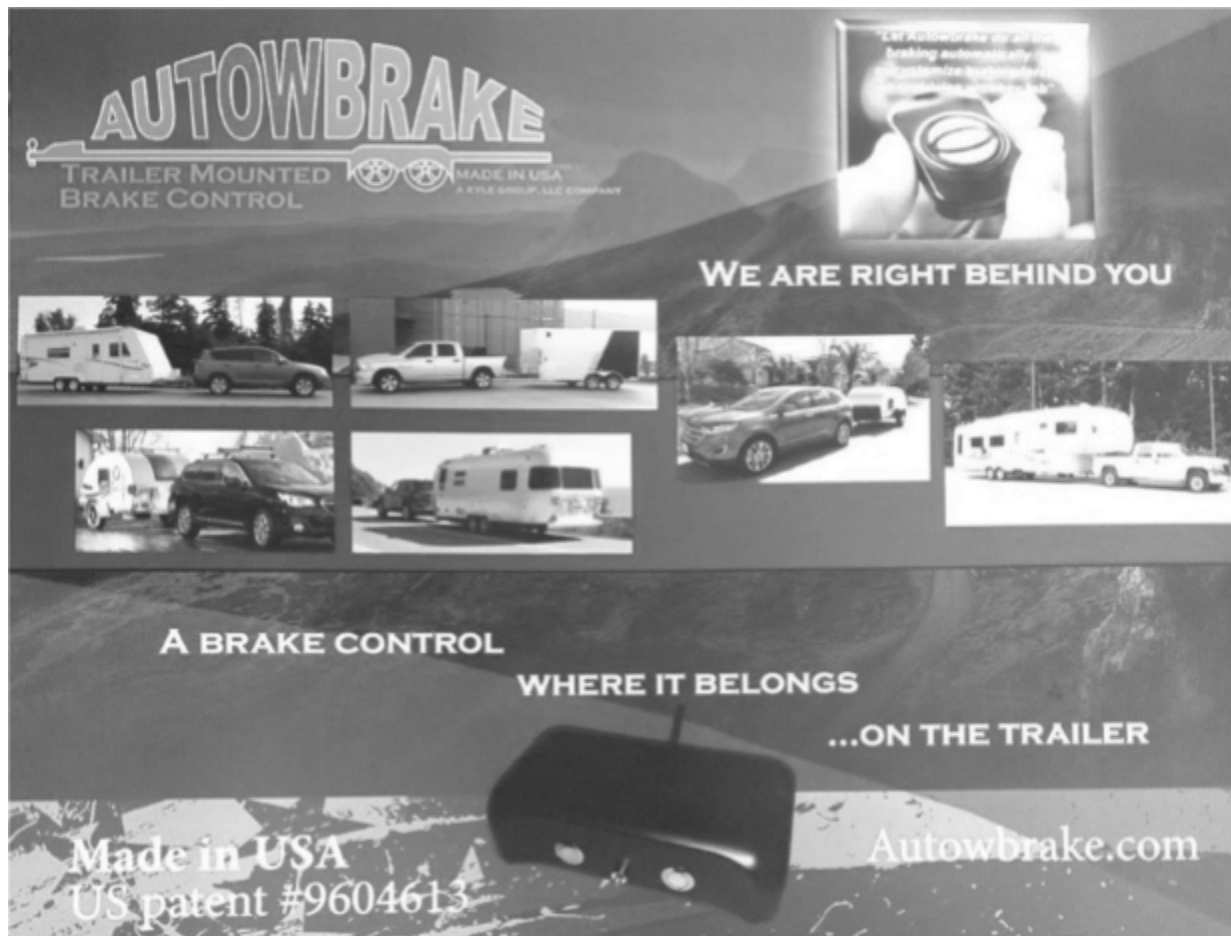




Autowbrake Installation Manual



Autowbrake Trailer Mounted Electric Brake Controller



****NOT DESIGNED TO USE A MOTORCYCLE AS A TOW VEHICLE ****

Table of Contents

Warranty on Trailer Mounted Electric Brake Control and Key Fob.....3

 Who May Use This Warranty?..... 3

 What Does This Warranty Cover?..... 3

 What Does This Warranty Not Cover?..... 3

 What is the Period of Coverage?..... 3

 What Are Your Remedies Under This Warranty?..... 3

Installation..... 4

 Step 1: Select Mounting location on trailer/ trailer frame..... 4

 Step 2: Identify Autowbrake wires and (trailer wires by function)..... 4

 Step 3: Connect Autowbrake to trailer wiring..... 5

 Step 4: Mount Autowbrake to trailer..... 5

 Step 5: Calibration (2-person process)..... 5

 Step 6: Selecting and Changing Autowbrake Settings..... 6

 Trailer Sway (All buttons on fob/ driving & not applying vehicle brakes)..... 8

Quick Reference Guide: Autowbrake..... 9

Visual Aids..... 11

****NOT DESIGNED TO USE A MOTORCYCLE AS A TOW VEHICLE ****

We do not define a tow vehicle as a motorcycle



Warranty on Trailer Mounted Electric Brake Control and Key Fob

Who May Use This Warranty?

Kyle Group LLC d/b/a Autowbrake (“The Company”) extends this warranty only to the purchaser who originally purchased the product(s). It does not extend to any subsequent owner or other transferee of the product. Proof of purchase (original sales receipt) must accompany all warranty claims. This warranty is non-transferrable.

What Does This Warranty Cover?

This warranty covers defects in materials and workmanship of the Trailer Mounted Electric Brake Control and/or the Key Fob for the warranty period as defined below.

What Does This Warranty Not Cover?

This warranty does not cover any damage due to transportation, misuse, abuse, neglect, negligence, accident, improper testing, abnormal environmental conditions, improper installation, storage, failure to follow the product instructions or to perform any preventive maintenance, modifications, unauthorized repair, and normal wear and tear. This warranty does not apply to cosmetic damage, including but not limited to scratches and dents. Further, this warranty does not apply to any product that has been used with any third-party products, hardware or product that has not been previously approved in writing by The Company. This warranty does not extend to any product or parts which have been lost or discarded by the purchaser or to units which have been altered or modified without authorization. This warranty also does not apply to any product, which is applied to a vehicle or trailer which is not rated for towing. **Warning**, this product should not be used with vehicles not rated for towing including all motorcycles / motorbikes.

What is the Period of Coverage?

The warranty for the Mounted Electric Brake Control starts on the date of the purchaser’s purchase and lasts for three (3) years. The warranty for the Key Fob starts on the date of the purchaser’s purchase and lasts for one (1) year. The warranty period for either product is not extended if The Company repairs or replaces the product. The Company may change the availability of this warranty at its discretion, but any changes will not be retroactive. The Company reserves the right to change and improve the design of the product(s) without obligation to modify any product(s) previously manufactured.

What Are Your Remedies Under This Warranty?

The exclusive remedy under this warranty shall be the repair or replacement of the defective component at the Company’s option. The Company reserves the right to require that all applicable failed materials are available and/or returned to The Company for review and evaluation. With respect to any defective product during the warranty period, The Company will, in its sole discretion, either repair or replace such product (or the defective part) free of charge or (b) refund the purchase price of such product. The purchaser is responsible for all costs and risk of loss associated with the delivery and return of the repaired or replaced product. The purchaser is also responsible for the cost of removal, the cost of forwarding the product, the cost of return, the cost of reinstallation, labor charges and damages incurred during installation or repair and replacement. **Exchanges require that the Autowbrake be returned to The Company (Autowbrake) in new condition without alterations or signs of use or cut wires, missing, or altered parts without exception**

****NOT DESIGNED TO USE A MOTORCYCLE AS A TOW VEHICLE ****



Installation

Tools required for Do-It-Yourself Installation

- You may need a voltmeter with 20V setting to identify trailer / vehicle hitch wires (12-volt rating available at most hardware stores)
- Wire connectors/ wire nuts, electrical tape, #10 hex head socket or screwdriver
- Packing list includes 3 #10 hex head self-tapping screws
- 1 cable clip
- 1 Key fob remote
- 1 Autowbrake Trailer Mounted Brake Control

WARNING: Failure to properly wire the Autowbrake to the correct wire function on your trailer may result in product failure and WILL void your warranty. We recommend having an industry professional install your Autowbrake for you.

Step 1: Select Mounting location on trailer/ trailer frame

The Autowbrake can be mounted any direction and any angle which provides a lot of freedom in installation location. We recommend locating the Autowbrake close to the junction box (usually on the trailer frame). ** If you cannot locate the junction box on your trailer, check the inside compartments or trace wires to the junction box on your trailer (possibly inside compartment or inside trailer).

Step 2: Identify Autowbrake wires and (trailer wires by function)

It is important to verify correct trailer wire functionality. **Use your trailer manufacturer owner's manual (most available online) for your specific trailer color codes and verify with voltmeter. **

DO NOT CONNECT ANY POWER TO THE AUTOWBRAKE GROUND (WHITE) WIRE!! This will void warranty

Autowbrake wire color/ function

Autowbrake White = Ground – Connect to ground wire on trailer

Autowbrake Red = Left turn signal – Connect to left turn signal on trailer

Autowbrake Brown = Right turn signal – Connect to right turn signal on trailer

Autowbrake Blue = Brake output- Connect to electric brake wire on trailer

Autowbrake Black = Power- **Option 1** - If tow vehicle is equipped with 7 way plug that has a 12 volt line from tow vehicle, or trailer is equipped with solar that keeps 12 volt battery charged Connect Autowbrake black power wire to 12-volt power on trailer **DO NOT use trailer break away battery for a power source. If you do not have a 12-volt line from vehicle and or you have a 4-way flat plug, see Option 2 below**



Option 2 - If you do not have a 12-volt power line from tow vehicle (example 4-way flat plug instead of a 7 way), connect Autowbrake power black to taillight circuit as direct 12-volt power source. May not work on vehicles with smart alternators. Check vehicle manufacturer to determine if your tow vehicle is equipped with a smart alternator.

When using Option 2, You must have your vehicle lights turned to the on position manually, and not use the automatic light feature. You must also know if you fail to turn the tow vehicle lights on while towing you will have no signal to activate trailer brakes.

Step 3: Connect Autowbrake to trailer wiring

Connect all Autowbrake wires to the matching function wires on the junction box or hard splice to trailer wire harness using quick connectors or wire nuts

DO NOT CONNECT ANY POWER TO THE GROUND(WHITE)WIRE EVER

Step 4: Mount Autowbrake to trailer

Using self-tapping screws included, to securely mount Autowbrake to your trailer. We recommend drilling a small pilot hole in frame to begin the self-tapping (when mounting direct to trailer frame).

Keep in mind Autowbrake can be mounted anywhere, and any angle or direction you choose. Keep in mind road debris when selecting a mounting location

Please be sure it is mounted snug, but do not overtighten. You want to make sure there is no movement once mounted. Check for secureness after towing the first few times to be sure it is snug.

Step 5: Calibration (2-person process)

Calibration is required the first time you install your Autowbrake. **The calibration process is a ONE-TIME process.** Recalibrate again only if the Autowbrake is relocated to another trailer or moved to another position on the trailer.

NOTE: We recommend calibrating Autowbrake on a level driveway or road surface.

Calibration process.

1. Connect the trailer to the tow vehicle.
2. Plug in trailer harness to tow vehicle.
3. **2 People required** - One person gets in the vehicle, turn vehicle ignition to on position and press the brake pedal down. (Make sure vehicle lights are on if using Option 2 for installation / lights as power source)
4. While the brake pedal is pressed, another person goes back to Autowbrake. **PRESS AND HOLD** both stainless steel buttons on the Autowbrake until the LED indicator light is solid then release the buttons.
5. When the LED indicator light stops flashing, the calibration process is complete. Your Autowbrake is calibrated and now understands its location and what “level” is
6. Release the brake pedal.



Confirming Key fob function/ power.

Make sure vehicle and trailer are plugged in and vehicle ignition is on (vehicle lights turned on manually if using option 2 for power)

Go back to the Autowbrake with your key fob and press any or all buttons on the key fob. The LED on the Autowbrake should light up solid. This confirms the key fob is synched to your Autowbrake and the brakes will activate.

*If the LED does not light up check power wires for proper connection or make sure lights are on if using option B for power

* If that does not work call for support 319-521-2310 / after-hours 319-214-0258

Step 6: Selecting and Changing Autowbrake Settings

Check Autowbrake current setting:

With vehicle and trailer connected and ignition on (lights turned on manually if using option B for power)

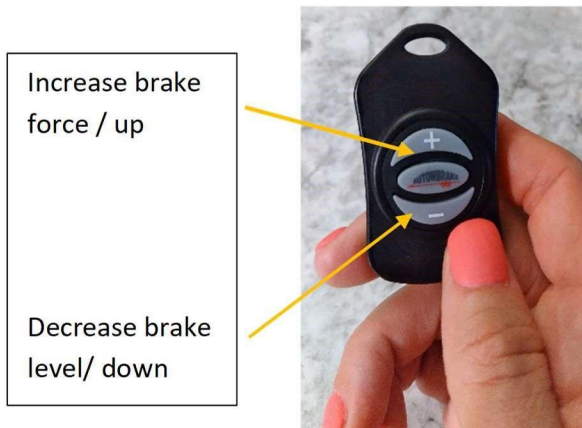
First press the right button (marked B) on the Autowbrake for one second and release. The LED light will flash. This will tell you what setting the Autowbrake is on. See below

- Setting 1: One slow flash 3 times in a row (total 3 blinks) up to 3500 pounds
- Setting 2: Two slow flashes 3 times in a row (total 6 blinks) 3500 – 6900 pounds
- Setting 3: Three slow flashes 3 times in a row (total 9 blinks) 7,000 – 20,000 pounds 🚛 We recommend you do not exceed your vehicle towing capacity

To change/ select settings (2 person process)

1. Make sure trailer and tow vehicle are plugged in and ignition on (make sure vehicle lights are on if using option 2 for power source)
2. One person press and hold the brake pedal down in the tow vehicle.
3. 2nd person – While brake pedal is held down, press the right button (marked B) on the Autowbrake once and let go to increase setting, or press the left button (marked A) on the Autowbrake once and let go to decrease setting. Release brake pedal after you have done this. Now with the brake pedal released press the B button to check setting. Repeat process until you are on the desired setting (see settings above to determine if you are on 1,2 or 3)
4. Autowbrake will always power up on the last setting used, so no need to do this each time you tow

Key fob Small Adjustment Buttons while braking



Key Fob Adjustment Functions

Key Fob Function 1: Increase / Decrease braking force

The key fob provides you the ability to make subtle changes in braking force while driving. Up button is used to increase braking force and down button is used to decrease braking force. These changes can be made while the tow vehicle is at a complete stop or in motion. **To use this function brakes must be applied at the same time you press the key fob buttons**

NOTE: You can increase braking up to 5 levels in your selected setting (example: if you are on setting 2, the fob will allow you to go from 2.0 up to 2.50). At a complete stop or while driving, press brake pedal down lightly and press the up button on the key fob. This increases your braking force level. If braking force level is too strong use the down button on the key fob instead of the up button. You must press and release the up or down button on the key fob each time for the setting to increase or decrease (Key fob image above) **This will not change the Autowbrake setting from 1, to 2, to 3 and so forth. That must be done manually**



Key Fob Function 2: Test brakes or assist in Sway control

You may test the trailer brakes by depressing the key fob buttons while in motion. To do this while driving get up to speed and take your foot off of the accelerator then press buttons on the key fob **(do not apply vehicle brakes while doing this)** You will feel a slow pulse from your trailer brakes. The Autowbrake is doing what is supposed to do.

Trailer Sway (All buttons on fob/ driving & not applying vehicle brakes)

If trailer sway occurs complete the following:

1. Lift your foot from the accelerator and DO NOT step on the brake pedal unless you are in danger of hitting something.
2. Press all buttons on the key fob remote. You will feel the trailer brakes activate
3. Hold fob buttons down until trailer sway is reduced. Release fob button(s) and continue towing.

Note: If your trailer starts to sway on the road, the NHTSA recommends activating the manual trailer brake control override by hand for trailer braking. That is what this Key Fob Function 2 does. Applying the tow vehicle brakes will generally make the sway worse in a sway situation.



** Key FOB: You must press brake pedal then press Key FOB buttons to make an adjustment to brake force while driving. Keep in mind this allows 5 levels within your current setting. This will not change the Autowbrake setting from 1, to 2, to 3 and so forth. That must be done manually.

Emergency Trailer Brake Manual Override Function

WHILE NOT BRAKING PRESS ANY OR ALL BUTTONS FOR EMERGENCY MANUAL TRAILER BRAKE OVERRIDE.



While not braking

Press all buttons while driving (and not applying vehicle brakes) to test braking or help decrease trailer sway

While Braking

Press + or – button to increase or decrease braking power within your current setting. Press once for each time you want to increase or decrease



Troubleshooting:

No LED light when attempting to calibrate: Check wire color codes to confirm wired correctly. Suggest using voltmeter to confirm

No LED light when Autowbrake gain button is pressed: Check wire color codes to confirm wired correctly. Suggest using voltmeter to confirm.

Hard trailer braking: Check the currently setting. Top of Page 8 > Check settings. You may also tailer braking force with the key fob. First select a lower Autowbrake setting (see “select settings”) You may use the key fob to tailor brake force while driving (fob directions above)

Sporadic or inconsistent braking: Unit may have not been calibrated. Make sure unit has been calibrated correctly. This only needs to be done once so the Autowbrake understands its new mounting position and what ground level is. Option 2, check to see of you are drawing power from trailer battery. If trailer battery is not maintaining a full charge you may get surges in power causing sporadic functions

LED light stays solid & Autowbrake not responding to setting changes: Signifies another brake control in use or wired inside vehicle. Autowbrake will go into sleep mode if there is another brake control in use to avoid conflicting signals. If no brake control is in the vehicle, it may indicate that power is connected to Autowbrake Blue brake wire. Check wiring to confirm that power is connected to power and not to Autowbrake blue brake wire

Yes we realize most people are towing outside of work hours and we always want to be there for you.

For tech support Monday – Friday please call us 319-521-2310

After hours and weekends 319-214-0258

www.getautowbrake.com



VISUALS

Quick Reference Guide: Autowbrake

Press and hold brake pedal > Have someone Press and hold BOTH buttons until you get a solid red LED, then release both buttons to calibrate.



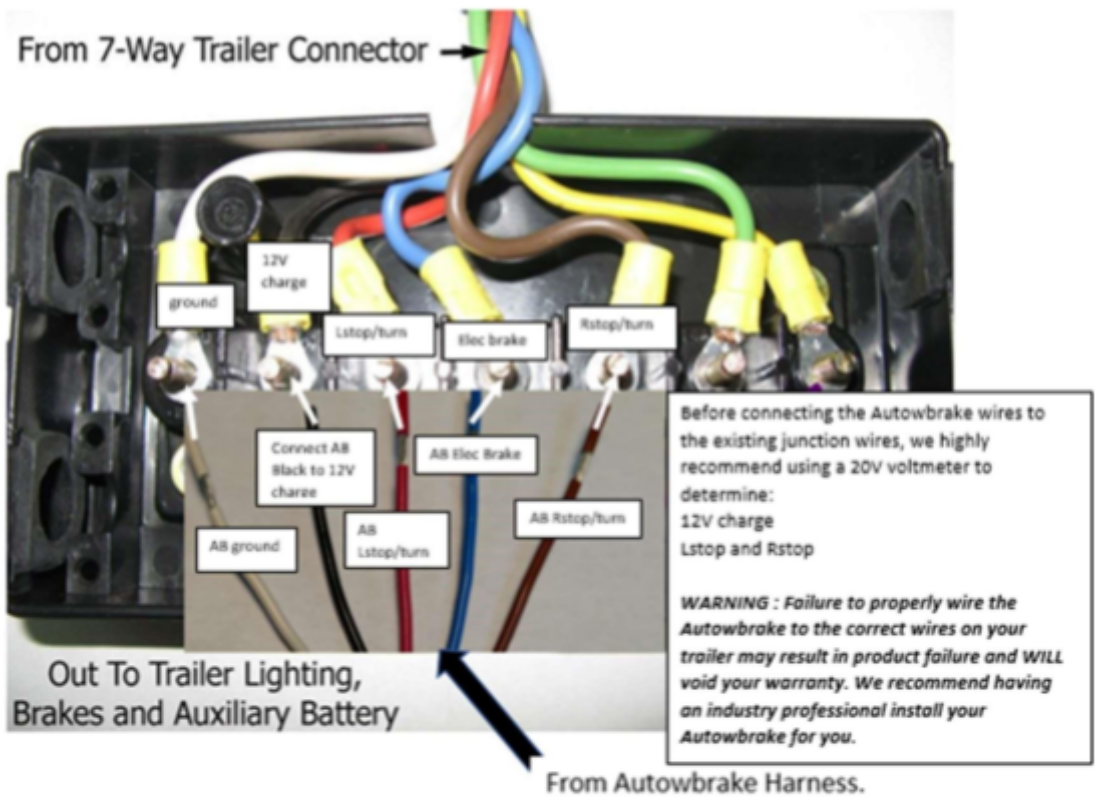
Calibrate-press and hold both buttons until solid red led. Then release.

To check your current settings and levels release brake pedal.

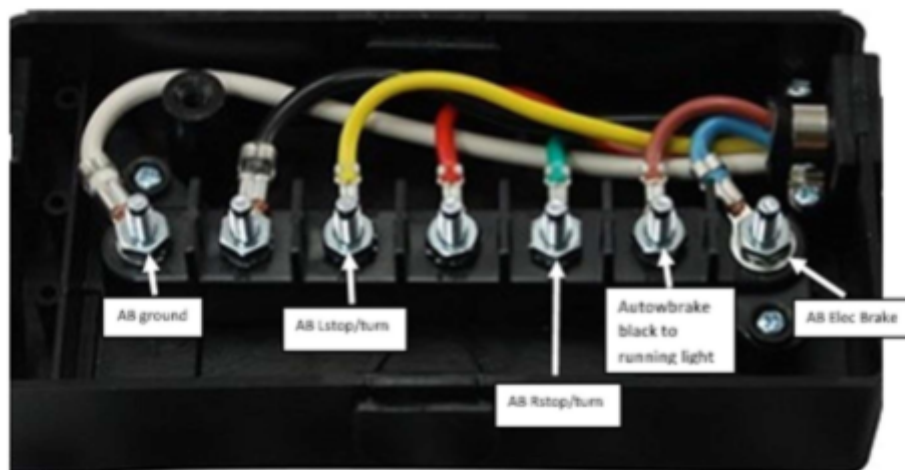
Press and release right button. Count LED flashes for main setting. (3 total = setting 1) (6 total= setting 2) (9 total= setting 3)



Visual Aids



Example of Utility/Cargo Trailer Junction Box wire/color codes. Connect Autowbrake wires as follows. **Table 1**



Mounting Options:

