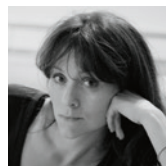


# Model BEHAVIOR

LUXURIOUS AND LEGGY, THESE SEXY SEATS STRUT THEIR STUFF TO FAVORABLE REVIEWS FROM AN ARTFUL CROP OF CREATIVE CONTEMPORARIES.

WRITTEN AND STYLED BY **KATE BERGERON**  
PHOTOGRAPHY BY **ERIC PIASECKI**



ROMY NORTHOVER  
ARTIST  
DESIGNBYNO.COM

**Artist to artist:** Helena Sultan's work sends a message to connect to the present. As with her company's name, Konekt, the pieces themselves, titled Pause, are a beautiful and simple reminder to do just that. **On balance:** There is a conversation between these materials—the shiny and the matte, the warm and the cold.

This complementary opposition displays a true understanding of balance. **Authenticity is what separates these pieces:** It's clear Helena's designs come from the heart and soul, and that really reads on a subliminal level. **Color play:** Cobalt, a precious pigment, is historically used in iconography, while rusty red imbues more of a wabi-sabi philosophy. I'm drawn to the tension this unexpected pairing of the chairs and background explores. **Last call:** The Pause pieces are bold, contoured, tactile and considered.



## CASTING CALL

**THE PIECE:** Pause Lounge Chair  
and Pause Chaise Lounge

**THE DESIGNER:** Helena Sultan

**FIND IT:** [konektfurniture.com](http://konektfurniture.com)

**THE INSPIRATION:** The Pause lounge chair and its sister chaise were born from a desire to invite users living in a world of digital overload to take a moment and slow down. Through the Pennsylvania-based designer's use of curvaceous fiberglass shells and alluring materials—copper, mohair, brass and velvet—the results are that of deep comfort, timelessness and a penchant to make one pause.



# FOREVER YOUNG

**THE PIECE:** Contour Armchair

**THE DESIGNER:** Cliff Young, Ltd.

**FIND IT:** [cliffyoungltd.com](http://cliffyoungltd.com)

**THE INSPIRATION:** With a comely and clean design in mind, Cliff Young, Ltd.'s Contour armchair came to fruition, and with it, the generational and highly respected brand's intention to brighten and lighten any space this sculptural piece will ever inhabit. With its inviting, lightweight form and stunning hide and metal options, this is indeed a mission accomplished.



SALLY KING BENEDICT  
ARTIST  
[SALLYBENEDICT.COM](http://SALLYBENEDICT.COM)

**Artist to artist:** Cliff Young, Ltd., has been on the vanguard of modern and relevant designs for nearly 50 years—how impressive is that! **I'm immediately drawn...** To the simple lines, mix of materials and functionality of the Contour chair. It's also attractive in that it has a modern Italian look that pops against this cobalt background. **There is nothing finer...** Than a supple, smooth leather to lie upon and break in to your own personal, perfect fit. The hide paired with the lustrous finish of the rose gold is a match made in five-star heaven. **On keeping it real:** Because the world is so inundated with the visual overload of others' work and inspiration these days, true authenticity and original design seem harder and harder to come by. I find it critical for true artisans and designers to continue on with our paths and ideas. Cliff Young, Ltd., has always been a fearless leader in doing just that. **Last call:** The Contour chair feels inviting, supple, streamlined and elegant.



KELLEY JOHNSON  
ARTIST  
[JOHNSON-KELLEY.COM](http://JOHNSON-KELLEY.COM)

**Artist to artist:** Farrah Sit's design aesthetic is so pleasingly minimal and functional and permeates everything she does—the Noir chair is no exception. **Opposites attract:** The strong and enduring quality of steel fused with the durable warmth of cotton is such a fresh marriage, visually and time withstanding. **Anytime you take a risk...** You learn something about yourself and the work that you do. It's the only way to discover your truth and take a stance on the message you want to convey. **Color play:** The cobalt and rust hues of the background, along with the severe lighting, heighten the planar and angular quality of the composition and seem to speak the same language as the Noir chair. This study in contrasts, between the light and the dark, the hard and the soft, could actually be used to describe both the environment and Farrah's design. **Last call:** The Noir chair reads as architectural, minimal, refined, purposeful and timeless.

# FREE AGENT

**THE PIECE:** Noir Lounge Chair

**THE DESIGNER:** Farrah Sit

**FIND IT:** [farrahsit.com](http://farrahsit.com)

**THE INSPIRATION:** Architectural planes, airy silhouettes and sleek edges define the Brooklynite's Noir series. A cool and clever exploration of "less is more," the series' star chair marries an unexpected pairing of steel and woven cotton, proving that opposites are often better when they're together.



# LEATHER AND LACE

**THE PIECE:** Artemis Armchairs

**THE DESIGNER:** Kelly Lamb

**FIND IT:** [kellylamb.net](http://kellylamb.net)

**THE INSPIRATION:** Multidisciplinary designer (and cool Californian) Kelly Lamb took all the right cues from Artemis—the Ancient Greek deity, goddess of the hunt and mistress of the wilderness and the moon—when conceptualizing this namesake chair. Leather upholstery and lacing reference the aesthetic of mythic times, while the metal finishes are fit for no less than a god or goddess, circa-BCE times or present-day.



WAYNE PATE  
ARTIST  
[WAYNEPATE.COM](http://WAYNEPATE.COM)

**Artist to artist:** I'm deeply impressed with Kelly Lamb's body of work and the balance in her execution of color and materials. Considering its composition and angles, I find this piece disarming. **On authenticity:** As well-known American graphic designer Paul Rand once said, "Don't try to be original. Just try to be good." That quote has had a lasting effect on me and informs how I approach my own work and look at others. **Clear-cut appeal:** The Artemis feels like a classic, modern chair, but one that you were not aware of until now. **I can never get enough of...** Black metal and bronze. Historically, this assembly of materials has been behind the making of so many iconic pieces from the 20<sup>th</sup> century. **A real beacon of luxury...** Is the laced-leather detail on the back of the chair—so clever and unexpected. **Last call:** The Artemis chair feels clever, understated, graceful, sophisticated and effortless.



# THE CLIMB

**THE PIECE:** Sempione Stool

**THE DESIGNER:** Natasha Baradaran

**FIND IT:** [natashabaradaran.com](http://natashabaradaran.com)

**THE INSPIRATION:** As homage to her grandfather and childhood afternoons spent lazing and feeding the pigeons in Milan's stately Parco Sempione, Natasha Baradaran reimagined a sculptural stool that's equal parts nostalgia and high style. Part of the L.A.-based designer's new Curva collection, the stool and its counterparts are packed with Milanese style and are meant to celebrate *dolce far niente* (the sweetness of doing nothing).



MIMI JUNG  
ARTIST  
[MIMIJUNG.COM](http://MIMIJUNG.COM)

**Artist to artist:** Natasha Baradaran has a markedly effortless knack for creating harmony in everything she touches, from her interiors to her furniture. **What's most striking...** About the Sempione stool is the intention and process that went into the realization of this piece. From the sweet inspiration to her ingenious use of plush and more severe materials, the whole design reads as a piece of art. **On authenticity:** Working in the creative world is a privilege—with it comes a responsibility to honor the past, respect the present and inspire the future. **The ultimate luxury...** In my opinion is being surrounded by artful works in your own home; I would love for this stool to live adjacent to the sofa in my living room. **Last call:** The Sempione stool is textural, plush, sculptural, heavy and light.

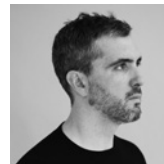
# FULL OF GRACE

**THE PIECE:** Stool 001 - Ebonized

**THE DESIGNER:** Vincent Pocsik

**FIND IT:** [vincentpocsik.com](http://vincentpocsik.com)

**THE INSPIRATION:** Stature, anatomy and cattle—a curious but oh-so-successful grouping of inspirations that led to the realization of Vincent Pocsik's Stool 001. Stirred by the bodily structure of animals, specifically that of the bull, Pocsik's design was crafted with the same elegance, strength and balance as that of the stoic and larger-than-life creature.



JOHN HOGAN  
GLASS ARTIST,  
DESIGNER & CONSULTANT  
[JOHNHOGANDESIGNS.COM](http://JOHNHOGANDESIGNS.COM)

**Artist to artist:** Vincent Pocsik's designs hold a soft masculinity and elevated feel that derives from simple, fluid lines and hearty materials. The attention paid to the negative space is really important to the sophistication of these stools.

**On timelessness:** Vincent's use of traditional materials is tried-and-true and makes the most sense for a stool. So many designs are beautiful but solely so; longevity and aesthetics should never be exclusive of one another. **Luxury nowadays...** Seems to be going in two different directions: Some concepts are more complex and involved, while others rely on the simplicity and quality of materials to say something more understated. Stool 001's strongest luxury is its restraint, and I appreciate that. **There is something about this form...** That suggests anatomical movement to me. I feel like maybe the stools want to go for a walk. **Last call:** This piece reads as masculine, soft, strong, chic and stable.