

THE POWER OF

**REDARC**<sup>®</sup>

## Change modes on your Tow-Pro™

Changing between modes requires the user to complete the following process:

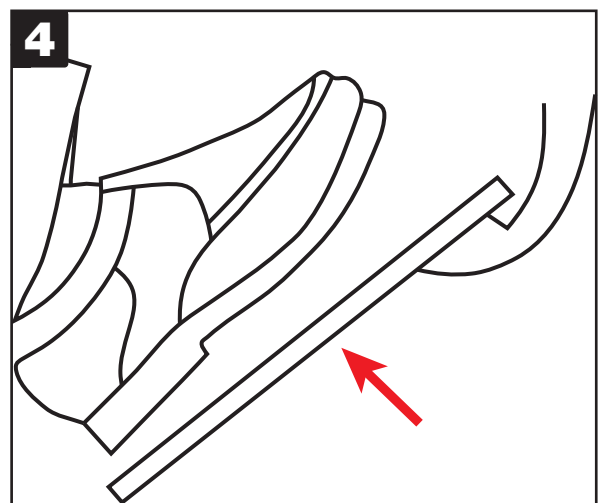
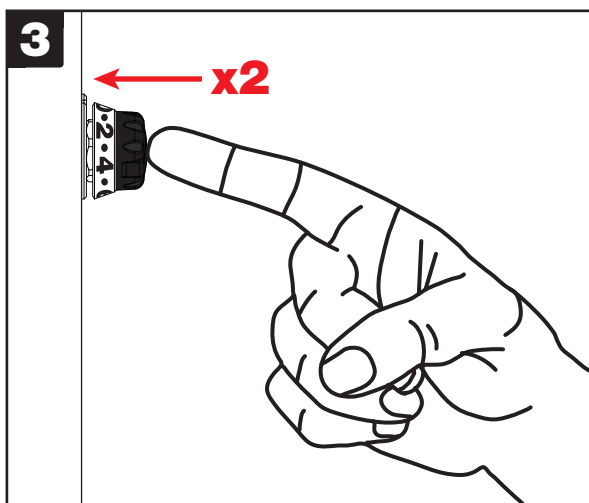
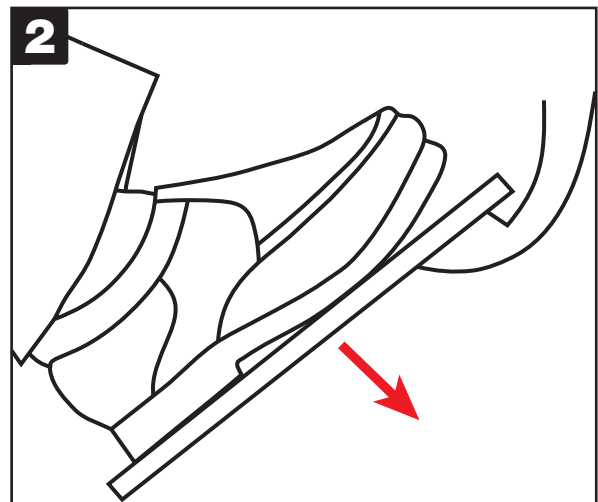
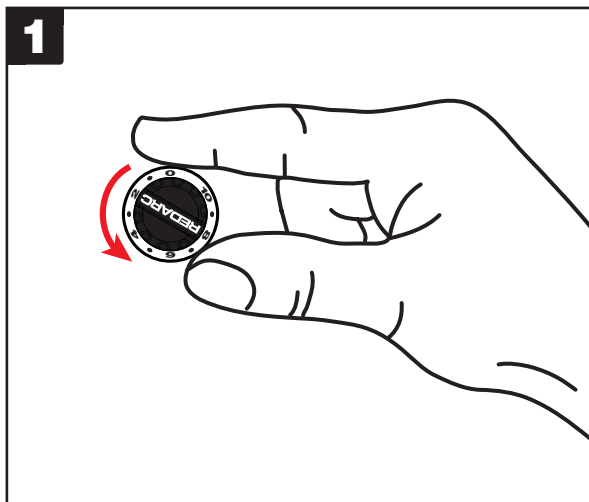
**NOTE:** Changing modes can only be completed with the trailer connected.

**NOTE:** Ensure the vehicle has come to a complete stop before beginning the mode change process.

1. Set the knob to 0
2. Apply vehicle brakes
3. Double-click the knob (i.e. two pushes within 1s) to toggle the mode
4. Release vehicle brakes

**NOTE:** Ensure you adjust the knob to a suitable setting for your driving conditions and vehicle/trailer combination once mode change is completed.

Everytime the vehicle is turned on, the Tow-Pro™ will start up in the mode that was last selected, providing the black wire has remained connected to power/battery positive.



# HOW TO...

Copyright © 2014 Redarc Electronics Pty Ltd. All Rights Reserved.