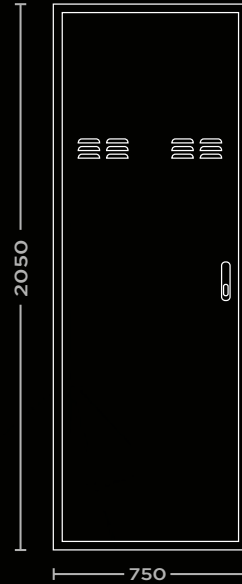
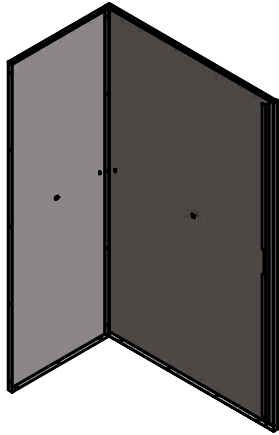




VERT

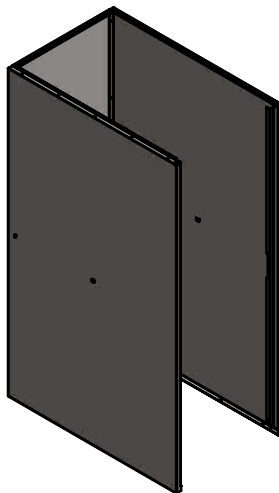
ASSEMBLY INSTRUCTIONS





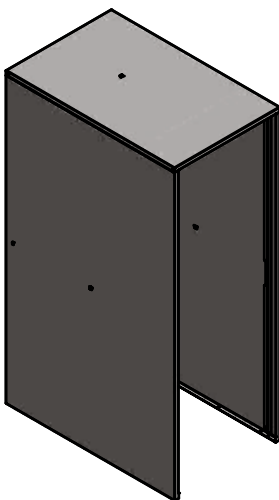
STEP 1

Stand or lay (V1) Back panel on the ground
Then attach (V1) Back panel to (V2) Side panel RHS
(5x M6-16 screws)



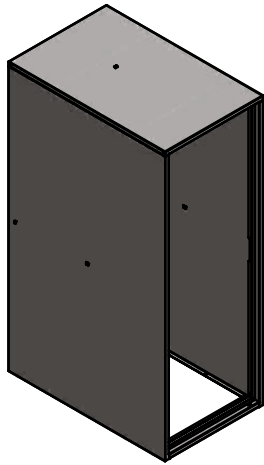
STEP 2

Attach STEP 1 to (V3) Side panel LHS
(5x M6-16 screws)



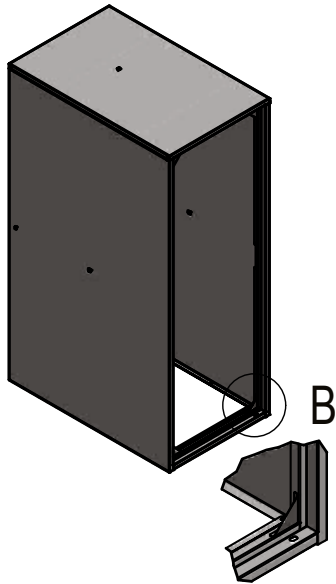
STEP 3

Attach (V4) Top panel to
(V2 and V3) RHS and LHS panels
(13x M6-16 screws)



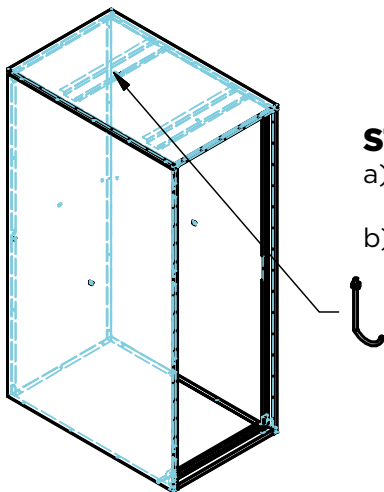
STEP 4

Insert (V5) Floor Brace to (V2 and V3)
LHS panel and RHS panel at ground level



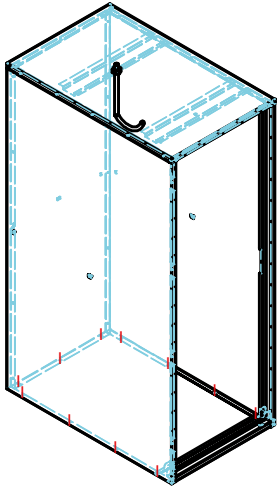
STEP 5

Attach x4 Corner Brace Brackets
(8x M5-12 screws)
Fasten x4 self drilling screws to each of the (V5)
Floor Brace to the corner flaps pre-aligned hole points



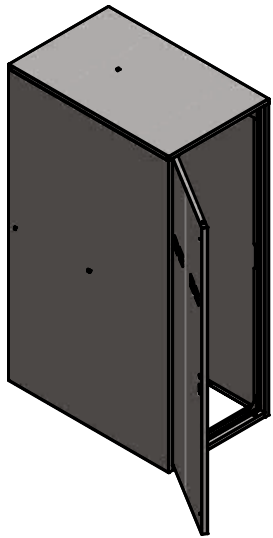
STEP 6

a) Screw (V6) Bike Hook brace into (V4) Top panel
and (V7) Roof brace as shown
b) Attach Vertical Bike Hook to (V6) Bike Hook brace.
Tighten nut to align hook in desired location



STEP 7, 8 & 9

7. Put locker in place and mark 11 hole locations
8. Remove locker and drill holes
9. Reposition locker and bolt to the ground or base with fasteners provided
(11x M8 50mm Hex Head Coach Screws and plugs)



STEP 10

Attach (V8) Door to (V3) side panel with x4 hinge pins
Slots for hinge adjustment are provided for minor door adjustment