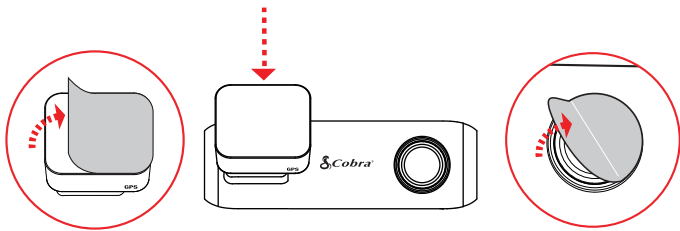
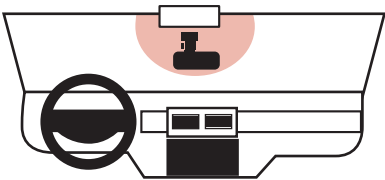


**1** Attach GPS Mount and remove the protective film from mount and camera lens

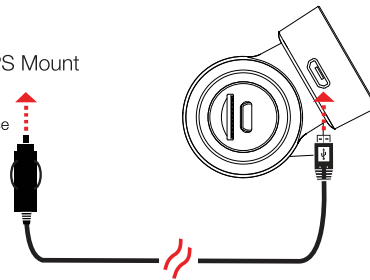


**2** Attach camera to windshield



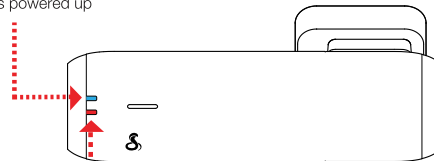
**3** Connect to GPS Mount

To 12V Power Source



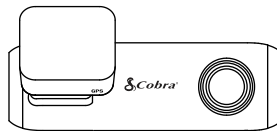
**4** Camera automatically turns on and begins recording

Blue LED indicator lights when camera is powered up



Red Indicator blinks when camera is recording

**5** View the camera's videos and adjust settings using the Drive Smarter® app



- Adjust Volume
- Change Language
- Change Resolution
- Format SD Card
- Update Firmware
- ...and more!

# Cobra®

## SC 100

SMART DASH CAM



### QUICK START GUIDE

Scan QR Code For Additional Languages:



# Thank you for purchasing the Cobra® SC 100

## DRIVE SMARTER® APP FEATURES:

### Real-Time Driver Alerts

Radar, speed, and red light camera alerts

### Cloud Video Management

Manage and share footage from your phone

### Emergency Mayday Notification

Alert someone in case of an accident

### Turn-by-Turn Navigation

Plan routes and easily view upcoming turns

### Over-The-Air Updates

Update your camera with the latest firmware and features



Download  
**DRIVE SMARTER®**

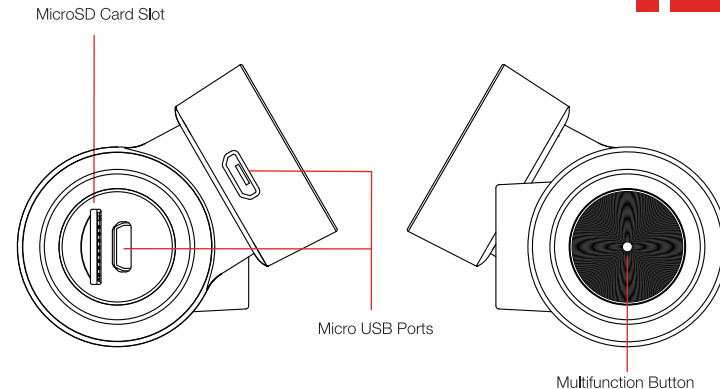
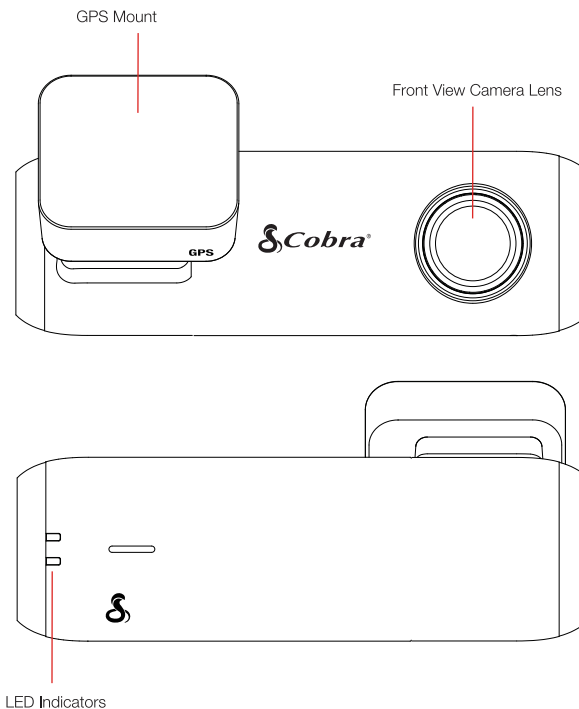


Full manual available at: [www.cobra.com](http://www.cobra.com)

Cobra® and the snake design are registered trademarks of Cobra Electronics Corporation, USA. Cobra Electronics Corporation™ is a trademark of Cobra Electronics Corporation, USA. Other trademarks and trade names are those of their respective owners.

©2022 Cobra Electronics Corporation

## SC 100 Features



Button Press	Camera Action
Press and Hold 3 seconds	Power on/off
Short Press (Not Recording)	Begin Recording
Short Press (During Recording)	Lock Video
2x Short Press	Take Photo
Press and Hold 10 seconds	Reset

