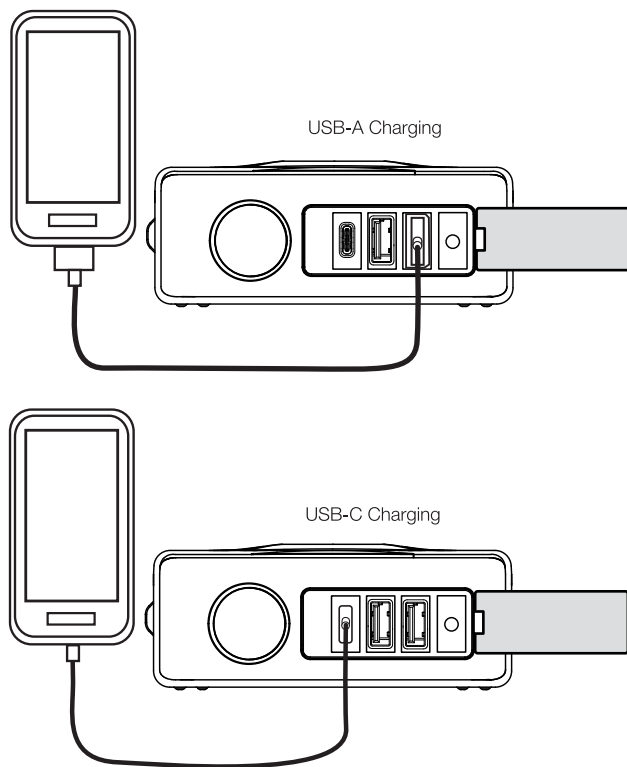
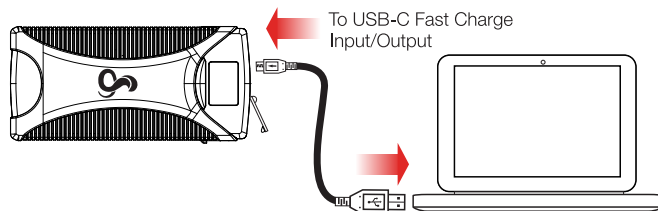


Charging Your Devices

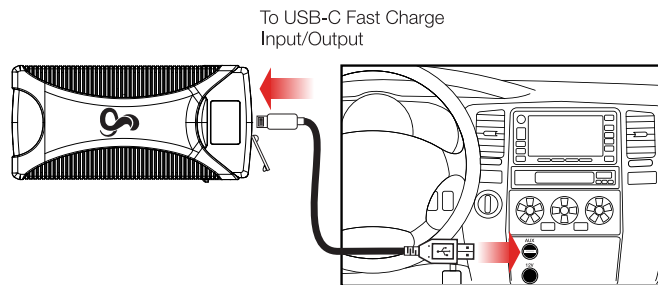


Re-Charging Your Jump Starter 1000A

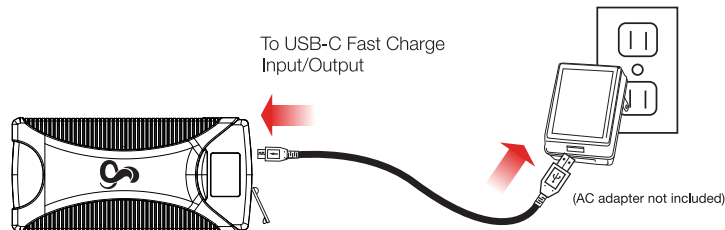
OPTION A



OPTION B



OPTION C



In-Car Jump Starting FAQ

How do I know if my battery is charging?

When the 12V jumper cables are plugged into the Jump Starter 1000A and vehicle's 12V accessory port, the LCD screen will show a flashing 5-bar graph and the word 'Output'. As your battery charges the flashing bars will begin to turn solid until the vehicle is ready to start, at which point a 'Ready' message will appear on the screen and you are ready to start your vehicle.

How long will it take to charge?

In-car jump starting will take longer than jump starting with a direct-to-battery connection, up to 15 minutes total. If your vehicle does not start with the in-car method, try to jump start with the direct-to-battery method.

What if I don't see the charging bars?

If the Jump Starter 1000A does not have enough charge to jump start from within the car, the current battery percentage will flash and a caution image will appear. In that case you will need to jump start your vehicle by using the direct-to-battery method.



Tri-Color Status LED:

The Status LED will illuminate and the color will change if the following conditions are present:

LED	CONDITION
No LED	Connection not detected or the Jump Starter 1000A battery is depleted. Check the battery charge level and verify the connection of the jumper cable to the Jump Starter 1000A.
Solid Red	Reverse polarity connection. Reverse the clamps.
Flashing Red	Over-current protection. Wait for 30 seconds and then retry connection.
Solid Yellow	Solid contact established and charging for jump start.
Flashing Yellow	Either the cables are not properly connected or the Jump Starter 1000A is too hot. Remove cable and retry connection.
Red and Green Flashing Alternatingly	Safety feature to prevent the battery from overheating from too many jump start attempts in a short period of time. Remove cable and wait a few minutes.
Solid Green	Ready to jump start your vehicle.

NOTE: When connected to your vehicle's battery and charging, the Jump Starter 1000A will make a clicking sound every 5 seconds. This is part of normal operation.

Cobra®

Jump Starter 1000A

Lithium-Ion Jump Starter & Power Bank
With Fast Charge USB



FULLY CHARGE FIRST!

For optimal performance, charge your Cobra Jump Starter prior to first use and every 12 months.

QUICK START GUIDE

Thank you for purchasing the Cobra Jump Starter 1000A

Jump start your vehicle's dead battery and keep your portable devices powered and charged with this heavy-duty Lithium-Ion jump starter and power bank. Fast charge USB ports allow you to charge multiple portable devices at once, while two starting options allow you to start your vehicle either from direct-to-battery connection or through the in-car connection using the 12V outlet inside your vehicle. Keep this in your vehicle for when you or others will need it!

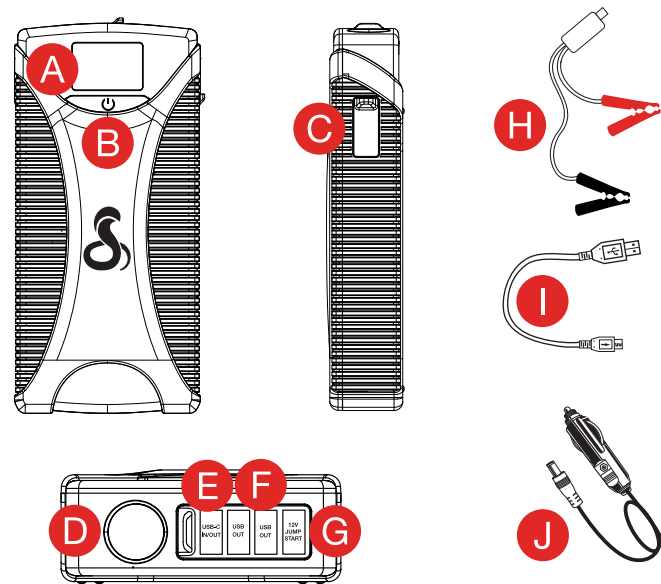
Count on Cobra for Power When You Need It.

Download the full Cobra Jump Starter 1000A manual at: cobra.com/manuals



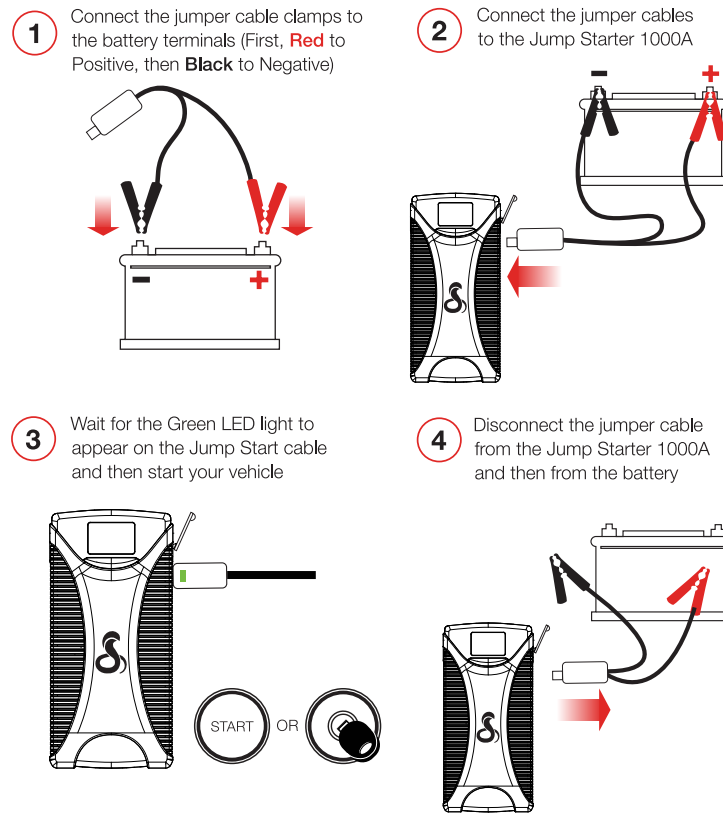
Cobra® and the snake design are registered trademarks of Cobra Electronics Corporation, USA.
Cobra Electronics Corporation™ is a trademark of Cobra Electronics Corporation, USA.
Other trademarks and trade names are those of their respective owners.

Jump Starter 1000A Features



- A. LED Display
- B. Power/Flashlight Button
- C. Jump Start Connector
- D. LED Flashlight
- E. USB-C Fast Charge Input/Output
- F. (2) USB-A Fast Charge Outputs
- G. 12V Jump Start Connector
- H. Jump Start Cable
- I. USB-C to USB-A Cable
- J. 12V Jump Start Cable

Jump Starting Your Vehicle: Direct-to-Battery



Jump Starting Your Vehicle: In-Car

