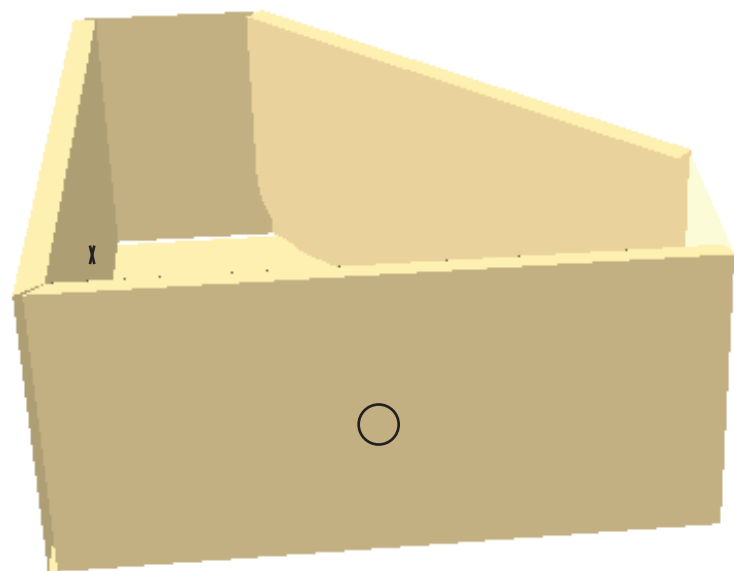


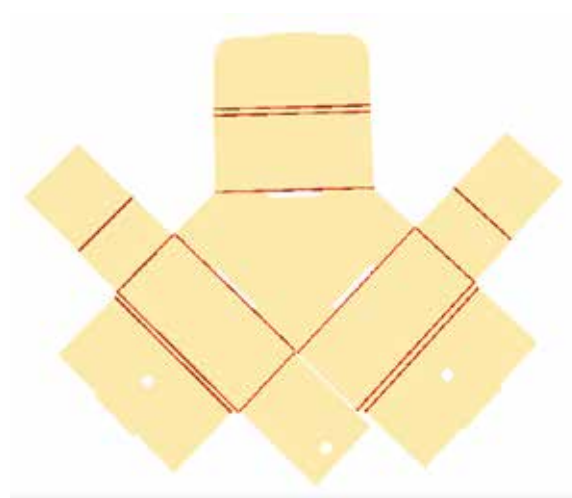
BLOCKA HOLDER

Instruction Sheet



CONTENT

A



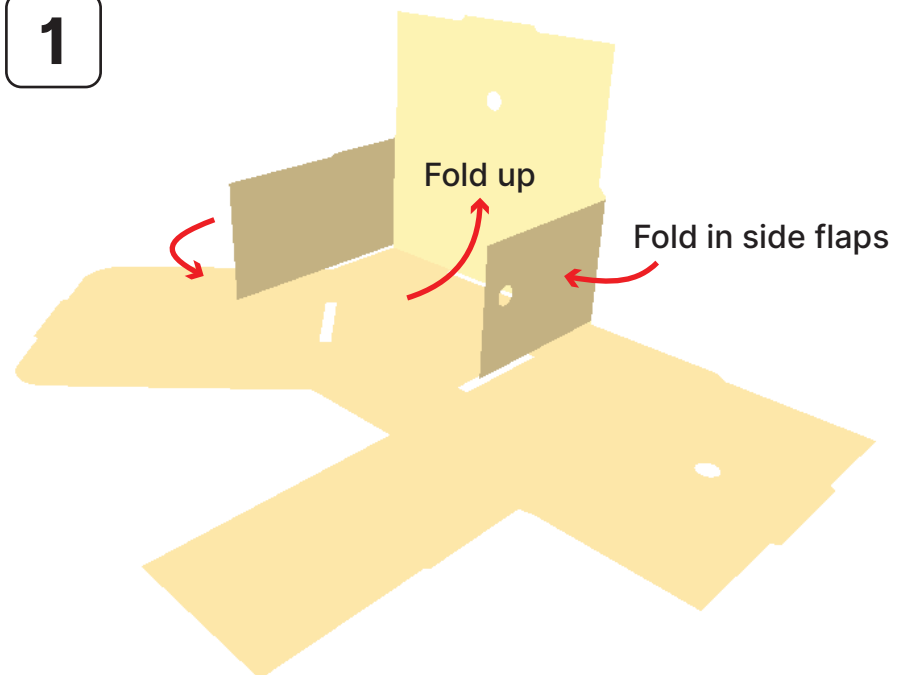
B



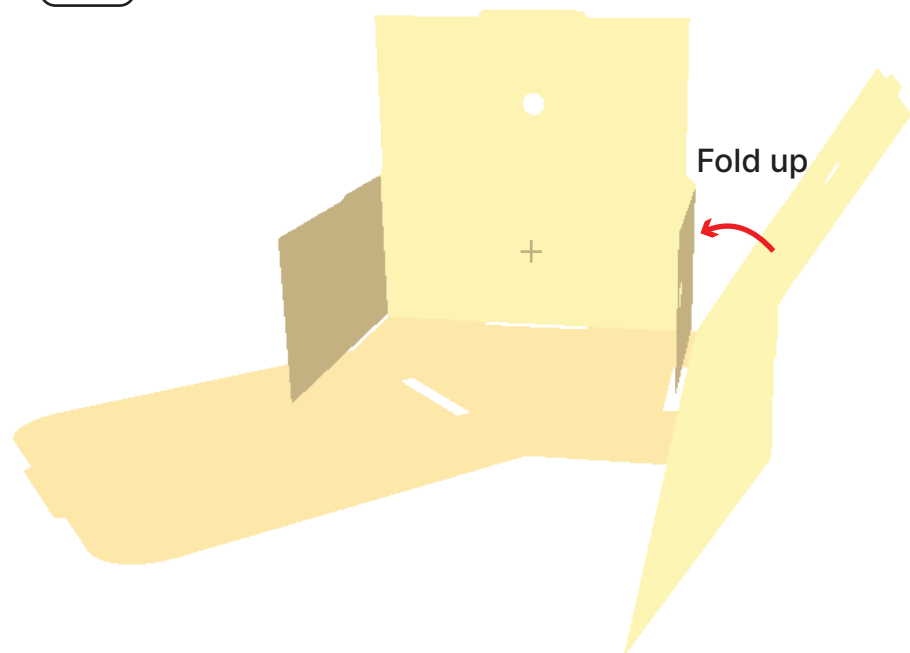
C



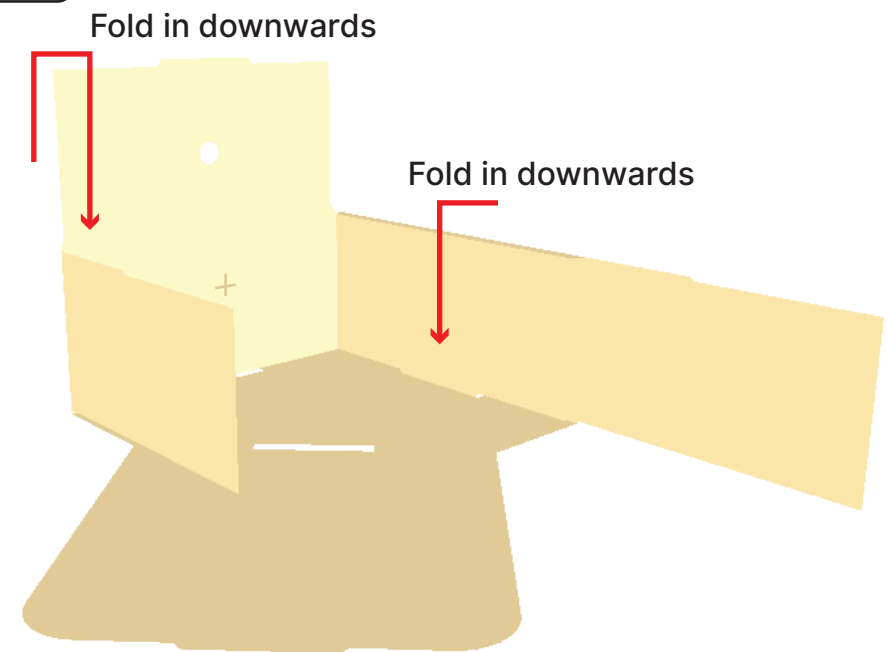
1



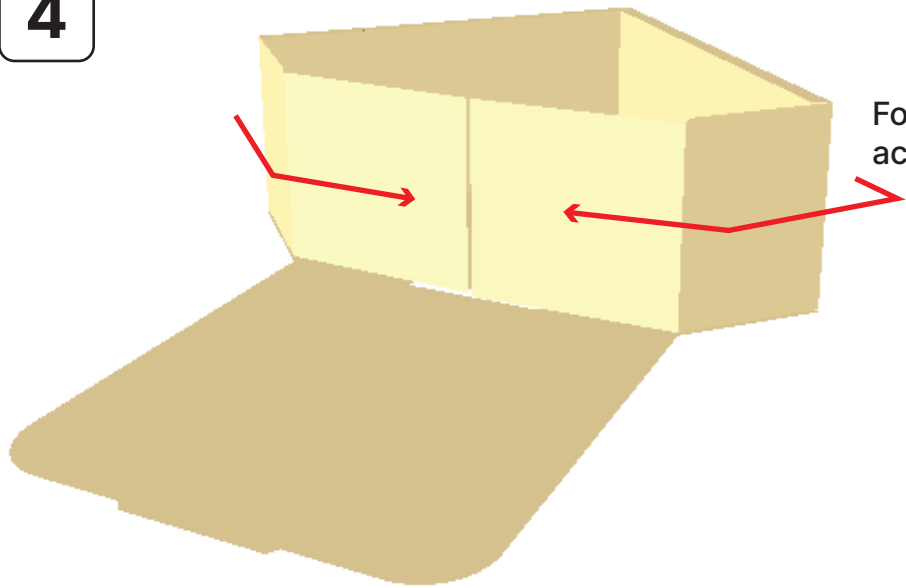
2



3

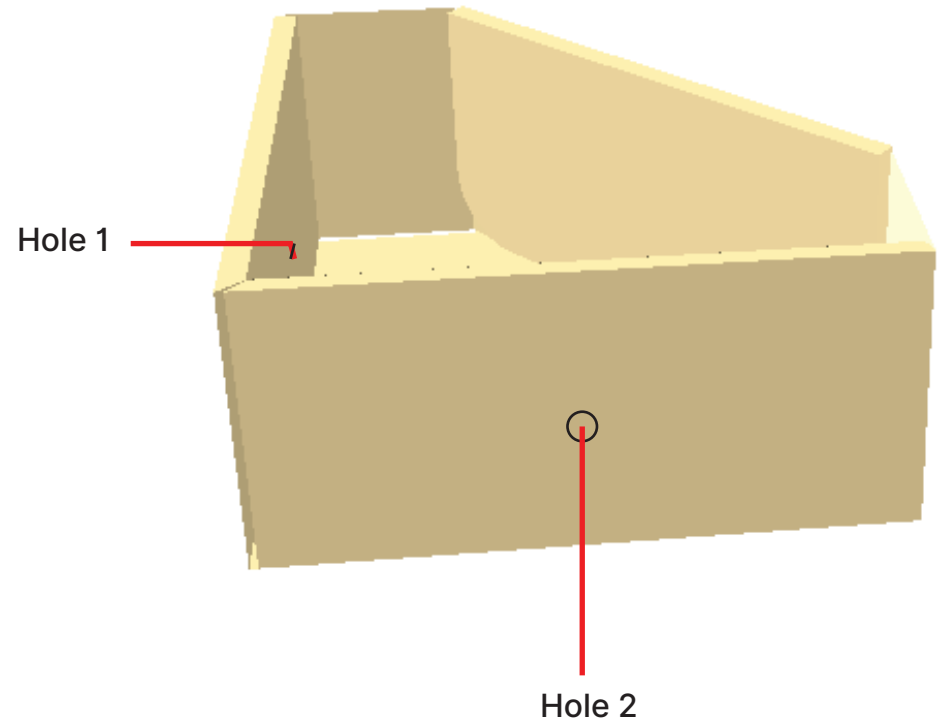


4



Fold the crease in accordingly

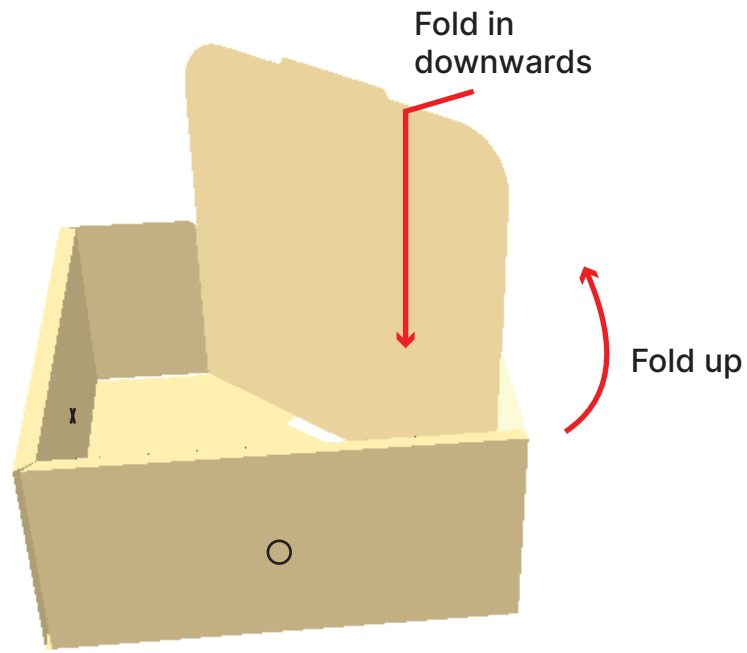
6



Hole 1

Hole 2

5



Fold in downwards

Fold up

HOW TO CONNECT THE HOLDER TO YOUR DIVIDER

B



C



1

This is the template given.



2

Place template at your desired position & mark the position of the hole.



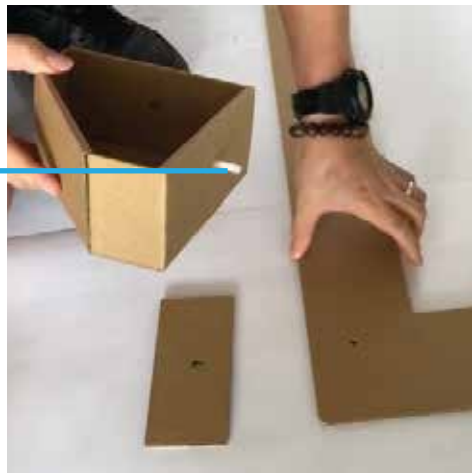
3

Use a screwdriver to create a hole through the marked position.



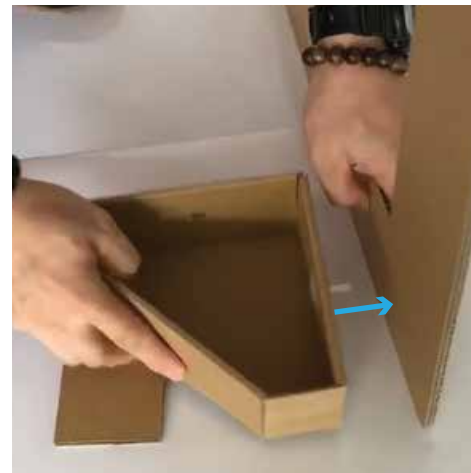
4

Place Part B into the hole of the holder.



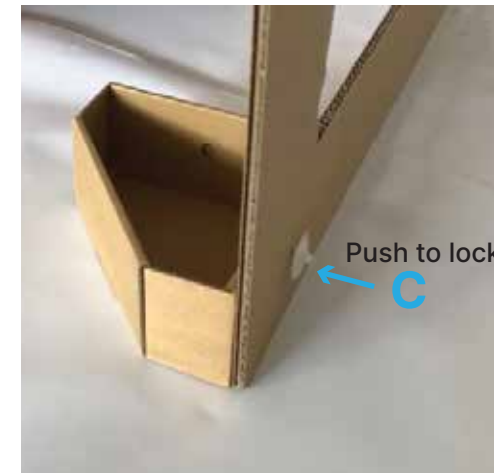
5

Push Part B through the divider's hole.



6

Last but not least, secure everything in place with Part C.



B

