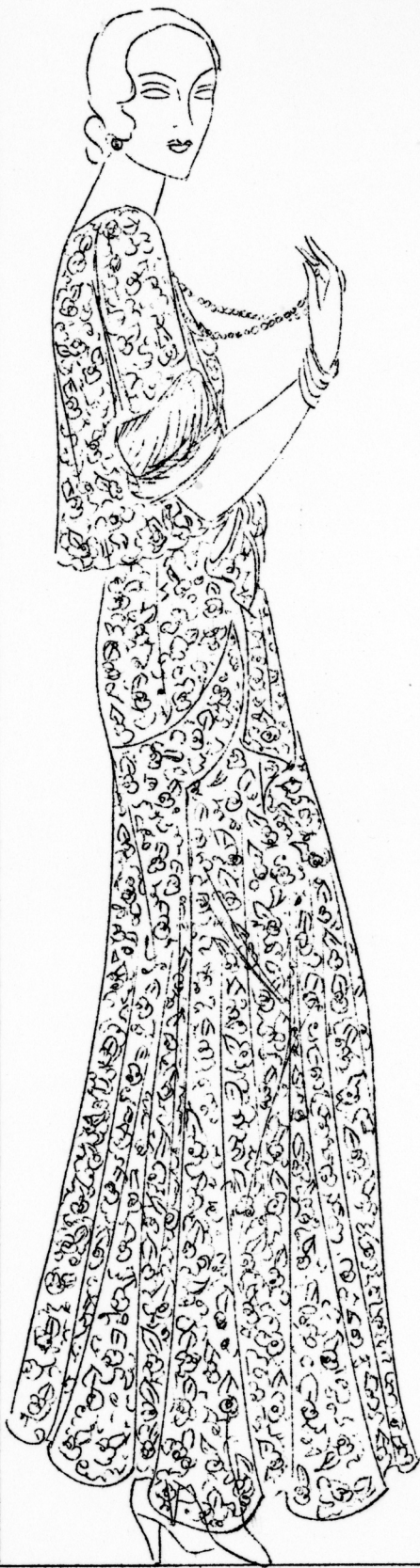


No. 5. WOMAN'S  
ROMNEY. This is  
a smart afternoon  
ensemble of canton  
crepe - the type  
of costume that can  
be worn North or  
South. The alencon  
lace at neck and  
sleeves and the drop  
rhinestone buttons  
form the trimming.  
The colors are....  
light pastels.....  
black,..or.....navy  
blue.



No. 6. WOMAN'S  
ROMNEY. A jacket  
costume of print  
or plain flat  
crepe is ideal  
for the matron..  
the yoke and sleeves  
of the dress are  
of fine Alencon  
lace.....and the  
little coat ties  
in a fashion that  
gives the effect  
of a dress.





No. 7. WOMAN'S ROMNEY. This lovely imported Chantilly lace evening gown is an adaptation of a Germaine Lecomte gown featuring draped neckline and new shirred bodice. Most important is the little lace jacket with flying squirrel cuffs. This is an excellent costume for wear in the North - South, or on a cruise trip.

