

ROMNEY DRESSES
JANUARY PROMOTION

In as much as the Jacket Costume is an important fashion, it was decided by the committee to make such costumes the basis for the ROMNEY showing.

The ROMNEYS chosen for January Promotion represent the smartest in Jacket Costumes:

The outstanding features are:

- the important jacket
- lace as trimming
- jewel trimming in buckles and buttons
- faillle weaves in silk crepes
- cloth ensemble
- embroidered batiste in Goupy's most important blouse
- lace for evening
- satin for evening

These costumes are important for resort wear as well as for town functions.

RVS:MT

ELEANOR TIMONEY

ROMNEY DRESSES FOR JANUARY PROMOTIONS

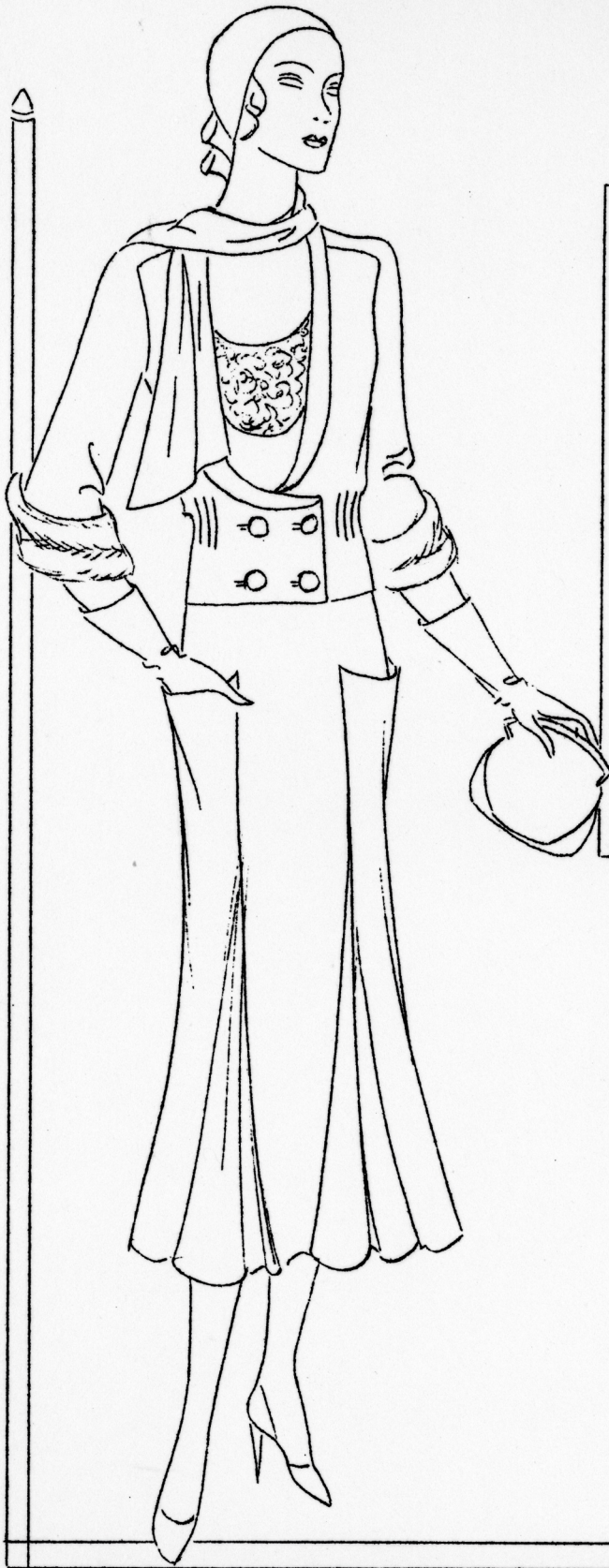
RESOURCE LIST

- Sketch #1 - Style #457 - Straus Miller, 498 Seventh Avenue
- Sketch #2 - Style #726 - M. A. Litwin, 498 Seventh Avenue
- Sketch #3 - Style #294 - Mary Lee, 1372 Broadway
- Sketch #4 - Style #761 - Rudolph Gowns, 530 Seventh Avenue
- Sketch #5 - Style #396 - Cohn & Holt, 1412 Broadway
- Sketch #6 - Style #546 - Jos. Greenberg, 550 Seventh Avenue
- Sketch #7 - Style #542 - Jos. Greenberg, 550 Seventh Avenue

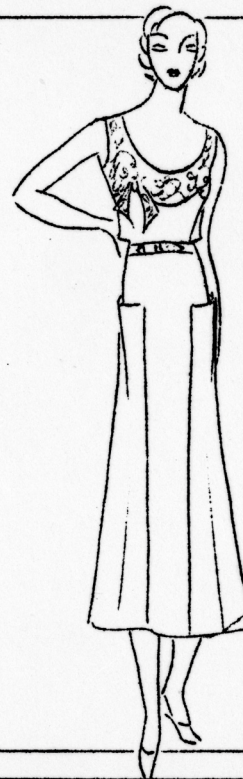
RVS:MT

No. 1. MISSES' ROMNEY. This three-piece suit is a Vionnet adaptation. It features a contrasting color blouse with tiny shirrings... a skirt with front double box pleats a little fitted jacket with contrasting color facing, and a separate scarf carrying out the same color contrast.





No. 2. MISSES
ROMNEY. This is a
costume which may
be worn for many oc-
casions. It is
ideal for afternoon
or resort wear and
is dressy enough for
tea-time. F. & H
Myra cloth is used
and the dress feat-
ures a deep yoke of
small pattern. Alen-
con lace. The coat
fits snugly with a
low cut front.....
double buttons.....
scarf collar....and
sleeves banded with
sable dyed squirrel.



No. 3. MISSES'
ROMNEY. Faille or
flamingo weaves are
new and important -
for Spring. Here is
a costume of black
spaced dot Rondeña.
It is a three-piece
jacket suit from...
Goupy, featuring a
darling blouse of em-
broidered organdie,
with a tiny peplum
and ruffle cap sleeve
which are typical of
this couturier. The
jacket has a lapel
front and three-quar-
ter length sleeves..
with fur cuffs.

