

Korean Word-Class Product

Bladder Volume Measurement System

# **CUBESCAN™**



## **BioCon-700**



medical  
sales &  
service

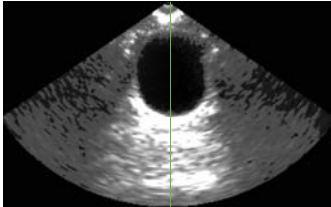
# Choice for Bladder Scanner

## What is CUBEScan

CUBEScan Bladder Scanner is the portable 3D ultrasound medical device to measure quickly and accurately the bladder volume and PVR(Post-Void Residual volume) on Real-Time Pre-Scan.

## Real-time Pre-Scan

It shows the real time ultrasound image before scanning and hence enables a user to locate easily the bladder position for more accurate measurement.



## The Built-in Printer

It enables the immediate on-site printing.

## The Color Touch Screen

It's easy to type in with on-screen keyboard.

## Grip and Scan

It maximizes the mobility.

## Easily Locate Bladder Position & Get Accurate Volume

## Clinical Applications

### Medical Service

- Urology
- Obstetrics-Gynecology
- Geriatrics
- Pediatrics
- Rehabilitation
- Surgical
- Operation Room
- Recovery Room
- Emergency
- Intensive Care
- Extended Care
- Home Health



### Effects

- Diagnose urinary retention and evaluate many common urological conditions
- Prevent unnecessary catheterization
- Reduce rates of urinary tract infection
- Monitor post-operative recovery
- Screen different types of incontinence to determine appropriate care
- Help caregivers manage and treat incontinence
- Reduce costs and save staff time



## Characteristics

- Non-Invasive Measurement
- Real-Time Pre-Scan
- Review of scanned bladder images
- Save and Retrieval of scanned information
- PC-transfer for scanned information
- Built-in Printer

## Features

- Voice Recording and Playback
- 3 Patient Types for Male, Female, and Child
- The Increased Mobility with Large Capacity Battery Pack
- Fast Patient ID input & Editing using Touch Screen
- Operation on Battery and/ or Adapter
- Easy PC Transfer

External SD card makes it possible to save lots of the patient scan data and to review on monitor



### Grip and Scan



## Technical Specifications

<b>Display</b>	7" TFT-LCD (WVGA) 16.7M colors (Color Touch Screen)
<b>Volume Range</b>	0-999ml Accuracy: $\pm 15\%$ , 15ml(0-999ml) <sup>1)</sup>
<b>Printer</b>	Built-in (50mm width) thermal printer
<b>Ultrasound Probe</b>	3D Sector Scan, 2.6MHz ultrasound frequency, B-Mode Scan, Scan Angle: 120°
<b>Power</b>	3A, 9V DC Adapter (Adapter Input: AC 100 ~ 240V 50/60Hz) 7.4V battery pack (Li-ion)
<b>Dimension</b>	66mm(L) x 202mm(W) x 130mm(H) (0.92Kg)
<b>Ultrasound Output Parameter</b>	Maximum (ISPTA): $\leq 1\text{mW/cm}^2$ Maximum (ISPPA): $\leq 10\text{W/cm}^2$ Maximum MI (Mechanical Index): $\leq 0.9\text{max}$ Transducer diameter: 10mm Transducer Resonant Frequency: 2.6MHz

\* Consumables: Battery Pack, Thermal Paper, Ultrasound Gel

\* Rolling Cart (Optional): The spec. of Rolling Cart may differ according to local supplier

\* 1) According to the scanning instruction and scanning on a Mcube Technology Tissue-Equivalent Bladder Phantom

Man, Machine & Medicine



## Choice for Bladder Scanner

# **CUBEscan™**

Model: BioCon-700

### Mcube Statement

All executive and staff of Mcube Technology are committed to develop and manufacture the high quality medical devices for the enhancement of quality-of-life and welfare of all human beings.



BioCon-500



**CUBEscanF**



Magnetic Stimulator  
BioCon-1000Pro



Unit 16B/81 Briggs Street, Carlisle  
Western Australia 6101

Tel: 9361 0843

Fax: 9470 3647

Email: [medsales@medsales.com.au](mailto:medsales@medsales.com.au)

Web: [www.medsales.com.au](http://www.medsales.com.au)