

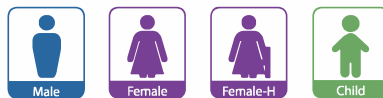
HOW TO USE Quick Manual




1. Turn on the System

Press the power button (⏻) to turn on the device.

2. Select Patient Type



In case of female patient who has had a hysterectomy, select Female-H  for more accurate measurement.

3. Apply Ultrasound Gel

Apply gel on the top of the probe before scanning.

* **Patient Position:** Have the patient lie in the supine position

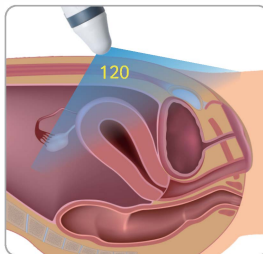
 medical
sales &
service

HOW TO USE Quick Manual

4. Aim Toward the Bladder

Put the gel-applied probe on the patient's abdomen and aim toward the bladder.

Important: Please make sure that the Scan button of the probe should be facing the foot side of the patient.



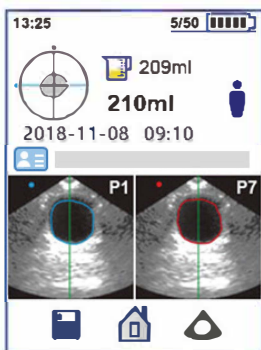
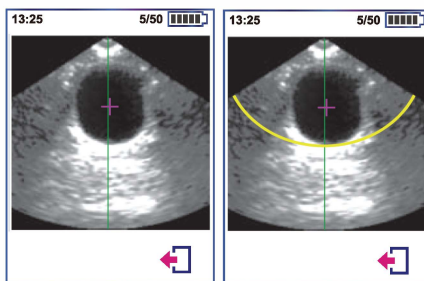
5. Locate the Bladder by Pre-scan Function

Press the Scan button to start Pre-scan, and then the Pre-scan function shows the live bladder image.

When the bladder image looks the biggest on the screen, press the Scan button.

Important: Please make sure that the Pre-scan function is 'on' in the device set-up.

Bladderpoint™ is a proprietary bladder targeting system used in Pre-scan mode to get a quick and accurate scan by placing crosshairs on the fluid in the bladder.



6. Scan Result Screen

Measured bladder volume will be displayed in ml with 12 frames to ensure the adequate measurement.

7. Save or Re-scan