



Toy Box Miniatures c. 1930

Fabric Collection by Sara Morgan
Spring Flowers quilt design by Leslie Sonkin



Quilt size: approximately 60 1/2" x 84 1/2"

Washington Street Studio



Toy Box Miniatures c. 1930

Spring Flowers quilt design by Leslie Sonkin

Skill Level: Confident Beginner • Finished Block Size: 12" square • Finished Quilt Size: 60½" x 84½"

Yardage Requirements:

34 assorted Fat Quarters (18" x 20") for blocks

Fabric A: TOYB 130 B for binding5/8 yard

Fabric B: Antique cream solid fabric5 1/8 yards

Backing of choice:5 yards

Batting:70" x 95"

Cutting Instructions:

Please read all instructions carefully before beginning. Strips are cut across the width of fabric unless otherwise stated. All seams are sewn with a 1/4" seam unless otherwise stated. **NOTE: Nest templates/shapes as best as possible to conserve fabric.**

34 assorted Fat Quarters:

1. Cut (72) B Templates.
2. Cut (68) C Templates.
3. Cut (34) D Templates

Fabric A: TOYB 130 B

1. Cut (8) 2 1/4" strips for binding.

Fabric B: Antique cream solid fabric

1. Cut (18) A Templates.
2. Cut (68) C Templates.
3. Cut (34) D Templates

Piecing Instructions:

Block A

1. Sew (4) assorted B pieces to (1) cream A piece (Figure 1). Press. Block should measure 12 1/2". Make (18) of Block A with assorted fabrics.

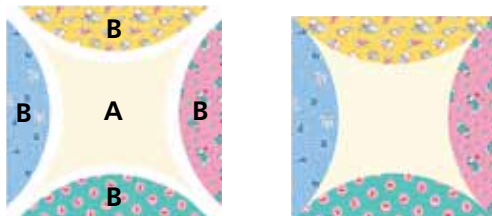


Figure 1 Make 18.

Block B

1. Sew (2) cream C pieces to (1) print D piece to make one print petal (Figure 2). Press. Block should measure 6 1/2" Make (34) print petals.

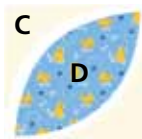


Figure 2 Make 34.

2. Sew (2) print C pieces to (1) cream D piece to make one cream petal (Figure 3). Press. Block should measure 6 1/2". Make (34) cream petals.



Figure 3 Make 34.

3. Sew (2) print petals and (2) cream petals together as shown to create one block (Figure 4). Press. Block should measure 12 1/2" Make (17) of Block B.

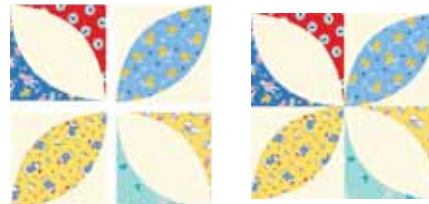


Figure 4 Make 17.

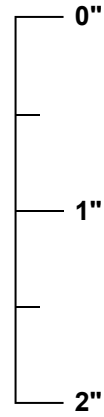
Quilt Assembly:

1. Referring to quilt photo for placement, start with Block A, alternating with Block B to sew a row of 5 blocks. Press seams open. Make 4 rows total.
2. Start second row with Block B and alternate with Block A to sew a row of 5 blocks. Press seams open. Make 3 rows total.
3. Sew rows together, starting with Block A row and alternate with Block B row. Press seams open.

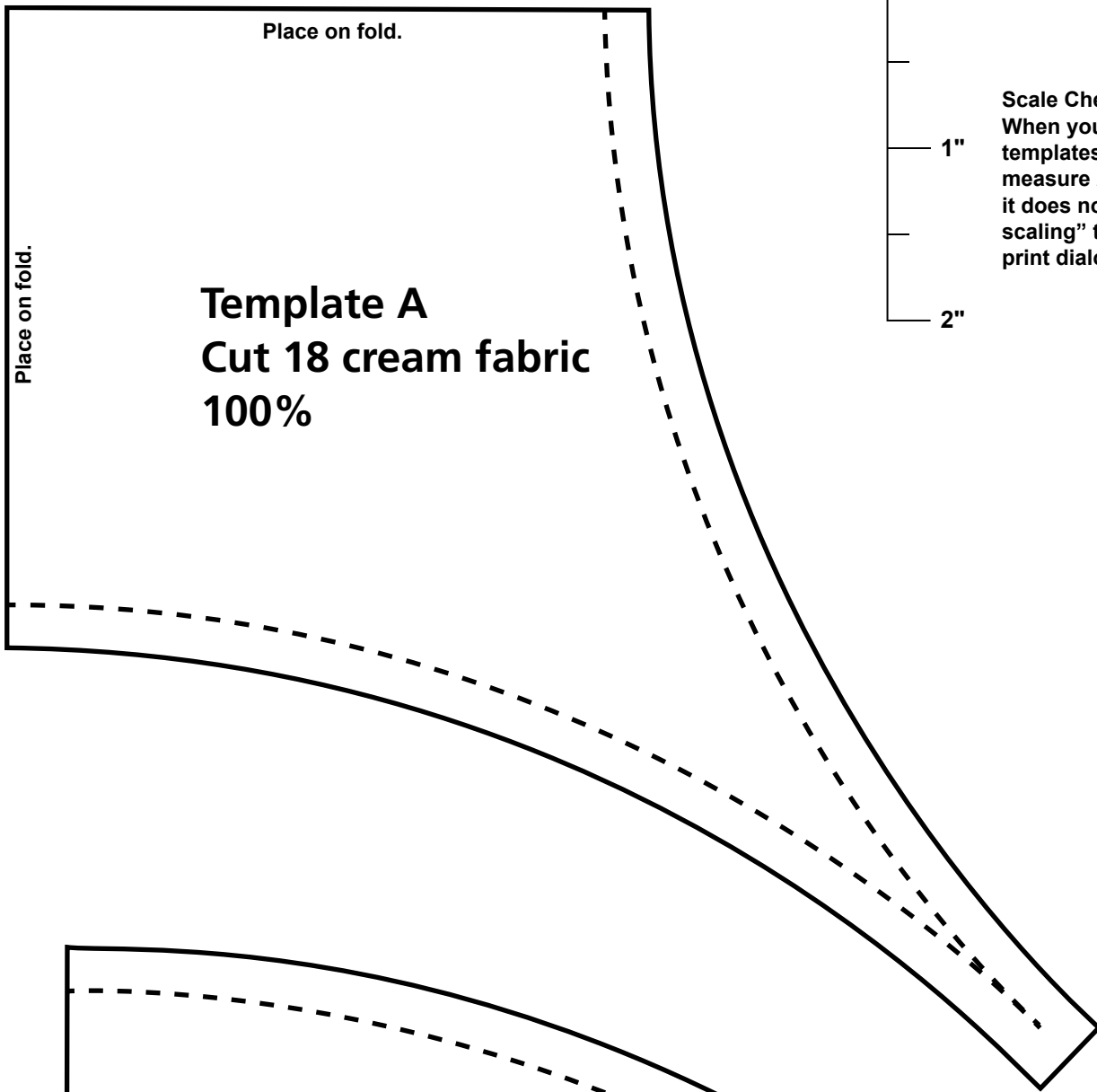
Finishing:

1. Prepare backing with a vertical seam to measure 70" x 95".
2. Layer backing, batting and quilt top. Baste layers together.
3. Quilt as desired.
4. Trim layers even with top.
5. Join (8) 2 1/4" B binding strips with diagonal seams. Press seams open. Press strip in half lengthwise with wrong sides together to make double-fold binding. Sew binding to quilt using your favorite method.
6. Make a label and sew to back of the quilt.





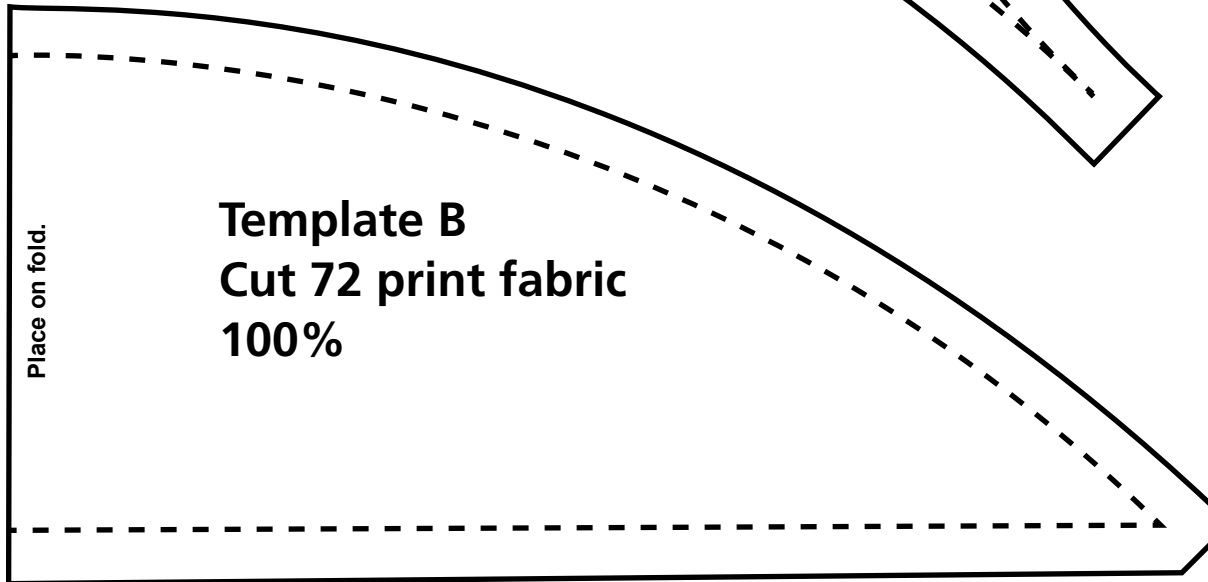
Scale Check for pdf files.
When you print these
templates, this ruler should
measure 2 inches long. If
it does not, change, "page
scaling" to "none" in the
print dialog box.



Place on fold.

Place on fold.

Template A
Cut 18 cream fabric
100%



Place on fold.

Template B
Cut 72 print fabric
100%

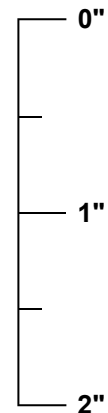


Template C

Cut 68 print fabric
Cut 68 cream fabric
100%

Template D

Cut 34 print fabric
Cut 34 cream fabric
100%

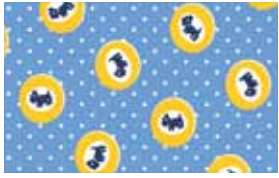


Scale Check for pdf files. When you print these templates, this ruler should measure 2 inches long. If it does not, change, "page scaling" to "none" in the print dialog box.



Toy Box Miniatures

Fabric Collection by Sara Morgan



TOYB 130 B*



TOYB 130 G*



TOYB 130 R*



TOYB 131 B*



TOYB 131 P*



TOYB 131 Y*



TOYB 132 G*



TOYB 132 N*



TOYB 132 R*



TOYB 133 B*



TOYB 133 G*



TOYB 133 R*



TOYB 134 B*



TOYB 134 P*



TOYB 134 Y*



TOYB 135 B*



TOYB 135 N*



TOYB 135 R*



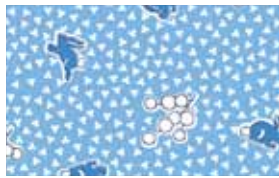
TOYB 136 B*



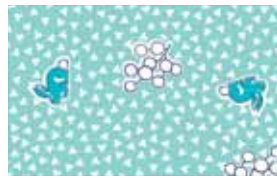
TOYB 136 G*



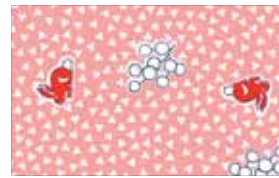
TOYB 136 P*



TOYB 137 B*



TOYB 137 G*†



TOYB 137 R*

* Used in project
† Suggested backing



www.washingtonstreetstudio.com

Washington Street Studio • 208 Clock Tower Square, Portsmouth, RI 02871 • 800-351-9087

△ 100% cotton ♦ Cold wash & dry ♦ 43" / 44" ♦ Colors may vary due to printing process