

Urban Scandinavian

Urban Ink Quilt by Kate Colleran



Black Diamond- Placemats and
Table Runner by Kate Colleran



Shown using fabrics from the line, **Urban Scandinavian**,
by Kirstyn Cogan for P&B Textiles



Urban Scandinavian

Urban Ink Quilt by Kate Colleran featuring the *Urban Scandinavian* collection by Kirstyn Cogan for P&B Textiles.

Quilt Size: 66" x 76"

Yardage

Fabric A	USCB 361 WK	¾ yard
Fabric B	USCB 364 K	1 ¼ yards
Fabric C	USCB 363 WK	¾ yard
Fabric D	USCB 361 K	¾ yard
Fabric E	USCB 364 WK	⅞ yard
Fabric F	USCB 365 K	⅝ yard
Fabric G	USCB 366 KW	1 ⅞ yards
Fabric H	USCB 363 K	⅝ yard
Backing	any USCB fabric	4 ¾ yards

Cutting

All strips are cut across the width of the fabric.

From fabric A (USCB 361 WK), cut:

(1) 11 ¼" x 42" strip; cut into (3) 11 ¼" squares.
Cut each square in half diagonally twice to yield 12 quarter square triangles.

(2) 5 ⅞" x 42" strips; cut into (12) 5 ⅞" squares.
Cut each square in half diagonally to yield 24 half square triangles.

From fabric B (USCB 364 K), cut:

(1) 11 ¼" x 42" strip; cut into (3) 11 ¼" squares.
Cut each square in half diagonally twice to yield 12 quarter square triangles.

(2) 5 ⅞" x 42" strips; cut into (12) 5 ⅞" squares.
Cut each square in half diagonally to yield 24 half square triangles.

(8) 2 ¼" x 42" strips; piece together for binding.

From fabric C (USCB 363 WK), cut:

(1) 11 ¼" x 42" strip; cut into (3) 11 ¼" squares.
Cut each square in half diagonally twice to yield 12 quarter square triangles.

(2) 5 ⅞" x 42" strips; cut into (12) 5 ⅞" squares.
Cut each square in half diagonally to yield 24 half square triangles.

General instructions: Read through all directions before beginning. Sew using a ¼" seam; seam allowances are built into the cutting directions. All pieces are sewn right sides together.

From fabric D (USCB 361 K), cut:

(1) 11 ¼" x 42" strip; cut into (3) 11 ¼" squares.
Cut each square in half diagonally twice to yield 12 quarter square triangles.

(2) 5 ⅞" x 42" strips; cut into (12) 5 ⅞" squares.
Cut each square in half diagonally to yield 24 half square triangles.

From fabric E (USCB 364 WK), cut:

(1) 11 ¼" x 42" strip; cut into (2) 11 ¼" squares.
Cut each square in half diagonally twice to yield 6 quarter square triangles.

(1) 5 ⅞" x 42" strips; cut into (6) 5 ⅞" squares.
Cut each square in half diagonally to yield 12 half square triangles.

(8) 1½" x 42" strips; piece together and cut into (2) 1½" x 70 ½" inner side borders and (2) 1 ½" x 62 ½" inner top and bottom borders.

From fabric F (USCB 365 K), cut:

(1) 11 ¼" x 42" strip; cut into (2) 11 ¼" squares.
Cut each square in half diagonally twice to yield 6 quarter square triangles.

(1) 5 ⅞" x 42" strips; cut into (6) 5 ⅞" squares.
Cut each square in half diagonally to yield 12 half square triangles.

From fabric G (USCB 366 KW), cut:

(7) 5½" x 42" strips; piece together and cut into (4) 5 ½" x 60 ½" sashing rows.

From fabric H (USCB 363 K), cut:

(8) 2 ½" x 42" strips; piece together and cut into (2) 2 ½" x 72 ½" outer side borders and (2) 2 ½" x 66 ½" outer top and bottom borders.

Block

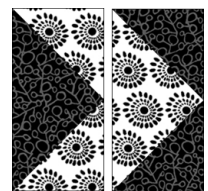
1. Sew a fabric A half square triangle to both short sides of a fabric B quarter square triangle to make 1 flying geese unit (FG). The FG unit should measure $5\frac{1}{2}" \times 10\frac{1}{2}"$. Make 12 FG units.
2. Repeat step 1 with the fabric B half square triangles and the fabric A quarter square triangles. Make 12 FG units.
3. Refer to the block 1 diagram and sew the FG unit from step 1 to the FG unit from step 2. Block 1 should measure $10\frac{1}{2}"$ square. Make 12 of block 1.
4. Refer to the block 2 diagram and follow steps 1-3 using fabric C and D to make 12 of block 2.
5. Refer to the block 3 diagram and follow steps 1-3 using fabric E and F to make 6 of block 3.



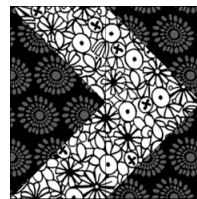
FG unit- Step 1



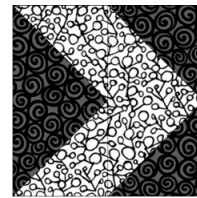
FG unit- Step 2



Block 1



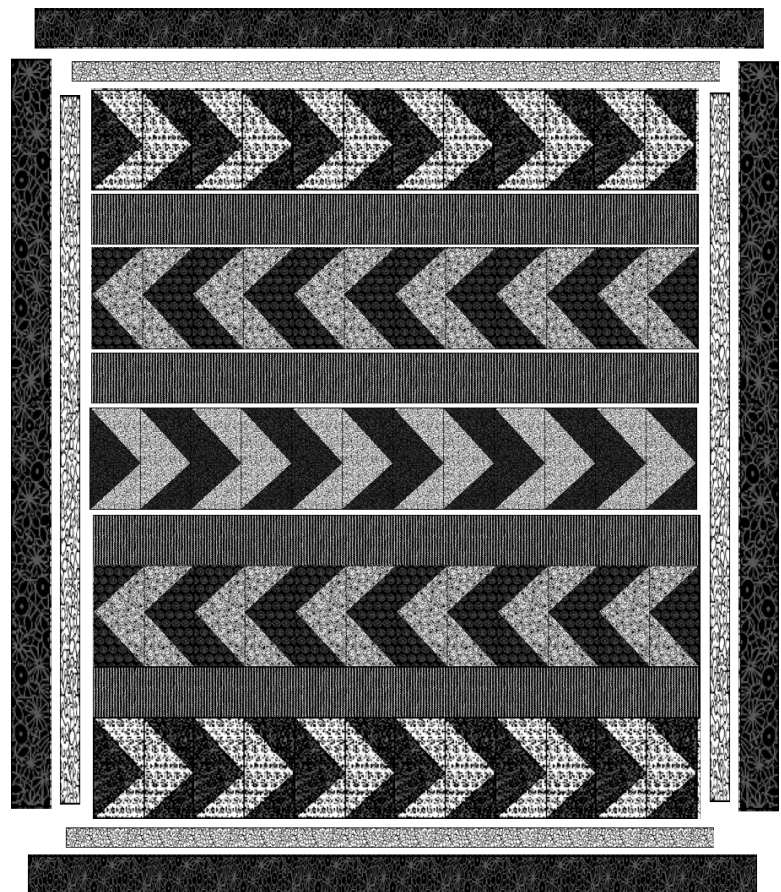
Block 2



Block 3

Quilt Assembly

1. Refer to the quilt assembly diagram. Sew 6 of block 1 together in a row. Make 2 rows; one for row 1 and one for row 5. The row should measure $10\frac{1}{2}" \times 60\frac{1}{2}"$.
2. Sew 6 of block 2 together into a row. Make 2 rows; one for row 2 and one for row 4.
3. Sew 6 of block 3 together into row 3; make 1.
4. Sew the rows together with the fabric G sashing rows in between.
5. Sew a $1\frac{1}{2}" \times 70\frac{1}{2}"$ fabric E inner border to each side of the quilt. Sew the $1\frac{1}{2}" \times 62\frac{1}{2}"$ fabric E borders to the top and bottom of the quilt.
6. Sew the fabric H outer borders to the quilt in the same manner. The quilt top should measure $66\frac{1}{2}" \times 76\frac{1}{2}"$.



Quilt Assembly Diagram

7. Layer the quilt top with batting and backing; baste. Quilt as desired. Using the $2\frac{1}{4}"$ wide fabric B binding strips, bind the edges to finish.

Urban Scandinavian

Yardage- Placemats

Pattern includes yardage to make 4 placemats.

Placemat Size: 14" x 18".

Fabric A	USCB 363 WK	¼ yard
Fabric B	USCB 361 K	¼ yard
Fabric C	USCB 361 WK	¾ yard
Fabric D	USCB 364 K	¾ yard
Fabric E	USCB 365 K	¼ yard
Fabric F	USCB 364 WK	¾ yard
Backing	any USCB fabric	1 ¾ yards

Cutting- Placemats

All strips are cut across the width of the fabric.

From fabric A (USCB 363 WK), cut:

(1) 3 ⅞" x 42" strip; cut into (8) 3 ⅞" squares.

From fabric B (USCB 361 K), cut:

(1) 3 ⅞" x 42" strip; cut into (8) 3 ⅞" squares.

From fabric C (USCB 361 WK), cut:

(3) 3 ⅞" x 42" strip; cut into (24) 3 ⅞" squares.

From fabric D (USCB 364 K), cut:

(2) 3 ⅞" x 42" strip; cut into (16) 3 ⅞" squares.

(3) 2 ½" x 42" strips; cut into (8) 2 ½" x 12 ½" side rectangles.

(4) 2 ¼" x 42" strips; piece together for binding.

From fabric E (USCB 365 K), cut:

(1) 3 ⅞" x 42" strip; cut into (8) 3 ⅞" squares.

From fabric F (USCB 364 WK), cut:

(7) 1 ½" x 42" strips; piece together and cut into

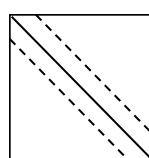
(8) 1 1/2" x 12 1/2" placemat side borders and

(8) 1 1/2" x 18 ½" placemat top and bottom borders.

Black Diamond Table Runner and Placemats
by Kate Colleran featuring the
Urban Scandinavian collection by
Kirstyn Cogan for P&B Textiles.

Block

1. Layer one 3 ⅞" fabric A square right sides together with a fabric B square. Draw a diagonal line on the wrong side of the fabric A square. Sew a ¼" away from the line on both sides. Cut the square apart along the diagonal line to make 2 half square triangle units (HST) measuring 3 ½" square. Repeat to make a total of 16 center HST units.



Center HST Unit

2. Repeat step 1 using (16) 3 ⅞" fabric C and fabric D squares to make 32 side HST units.
3. Repeat step 1 using (8) 3 ⅞" fabric C and fabric E squares to make 16 corner HST units.

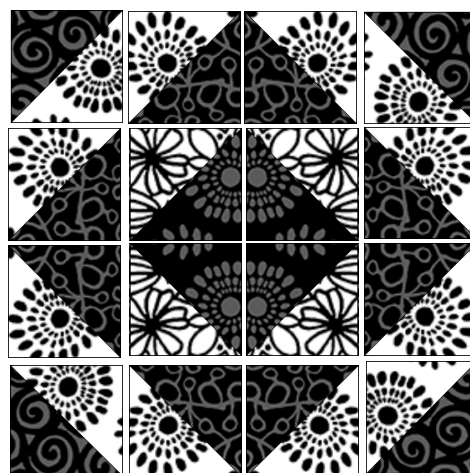


Side HST Unit



Corner HST Unit

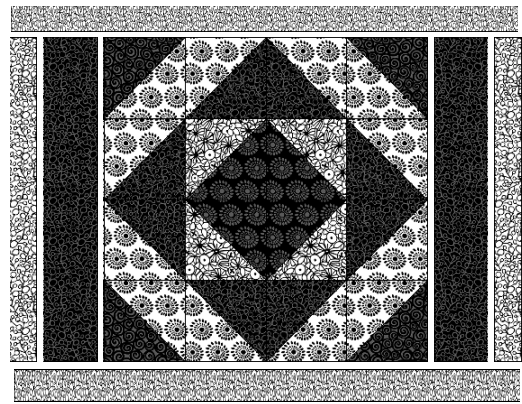
4. Refer to the block assembly diagram and sew the HST units from steps 1-3 into rows, then sew the rows together. The block should measure 12 ½" square. Make 4 blocks.



Block Assembly Diagram

Placemat Assembly

1. Sew a 2 ½" x 12 ½" fabric D rectangle to each side of a block.
2. Sew a 1 ½" x 12 ½" fabric F side border to each side of the placemat. Sew the 1 ½" x 18 ½" fabric F top and bottom borders to the placemat. The placemat should measure 14 ½" x 18 ½". Make 4 placemats.
3. Layer the placemat top with batting and backing; baste. Quilt as desired. Using the 2 ¼" binding strips, bind the edges to finish.



Placemat Assembly Diagram

Yardage- Runner

Pattern includes yardage to make 1 runner. Runner Size: 16" x 40".

Fabric A	USCB 363 WK	¼ yard
Fabric B	USCB 361 K	¼ yard
Fabric C	USCB 361 WK	¾ yard
Fabric D	USCB 364 K	⅝ yard
Fabric E	USCB 365 K	¼ yard
Fabric F	USCB 364 WK	¼ yard
Fabric G	USCB 363 K	¼ yard
Backing	any USCB fabric	1 ¾ yards

Cutting- Table Runner

All strips are cut across the width of the fabric.

From fabric A (USCB 363 WK), cut:

- (1) 3 ⅞" x 42" strip; cut into (6) 3 ⅞" squares.

From fabric B (USCB 361 K), cut:

- (1) 3 ⅞" x 42" strip; cut into (6) 3 ⅞" squares.

From fabric C (USCB 361 WK), cut:

- (2) 3 ⅞" x 42" strip; cut into (18) 3 ⅞" squares.

From fabric D (USCB 364 K), cut:

- (2) 3 ⅞" x 42" strip; cut into (12) 3 ⅞" squares.
 (4) 2 ¼" x 42" strips; piece together for binding.

From fabric E (USCB 365 K), cut:

- (1) 3 ⅞" x 42" strip; cut into (6) 3 ⅞" squares.

From fabric F (USCB 364 WK), cut:

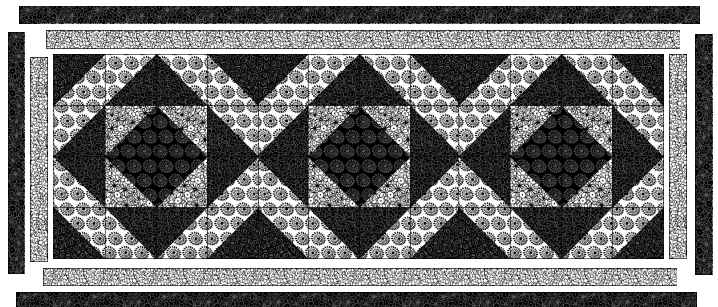
- (3) 1 ½" x 42" strips; piece together and cut into
 (2) 1 ½" x 12 ½" inner side borders and
 (2) 1 ½" x 38 ½" inner top and bottom borders.

From fabric G (USCB 363 K), cut:

- (3) 1 ½" x 42" strips; piece together and cut into
 (2) 1 ½" x 14 ½" outer side borders and
 (2) 1 ½" x 40 ½" outer top and bottom borders.

Runner Assembly

1. Refer to placemat instructions and make 3 blocks.
2. Refer to the runner assembly diagram and sew the 3 blocks together in a horizontal row.
3. Sew a 1 ½" x 12 ½" fabric F inner side border to each side of the runner. Sew the 1 ½" x 38 ½" fabric F inner borders to the top and bottom of the runner.
4. Sew the 1 ½" fabric G borders to the runner in the same manner. The runner top should measure 16 ½" x 40 ½".
5. Layer the runner top with batting and backing; baste. Quilt as desired. Using the 2 ¼" binding strips, bind the edges to finish.



Runner Assembly Diagram

Seams Like A Dream Quilt Designs

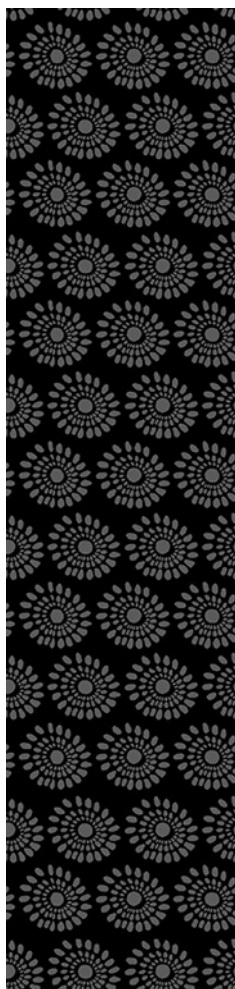
seamslikeadream.com

info@seamslikeadream.com

Visit our website to see our whole line of patterns!

Urban Scandinavian

Fabric collection by **Kirstyn Cogan**



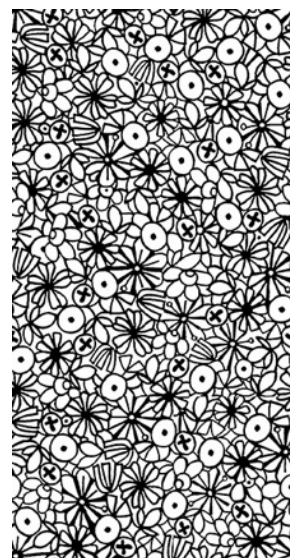
USCB 361 K



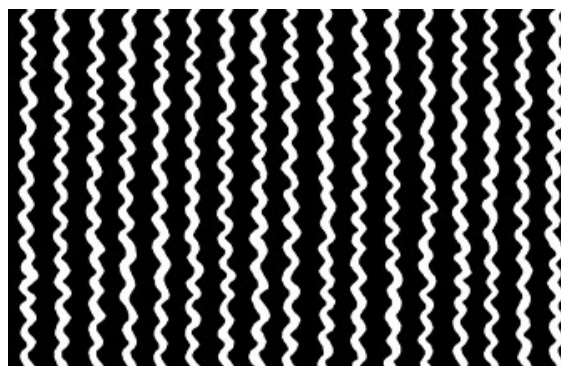
USCB 361 WK



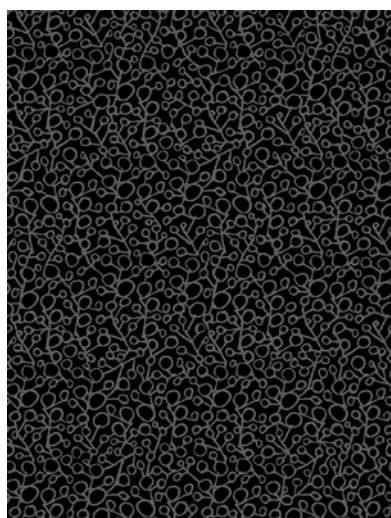
USCB 363 K



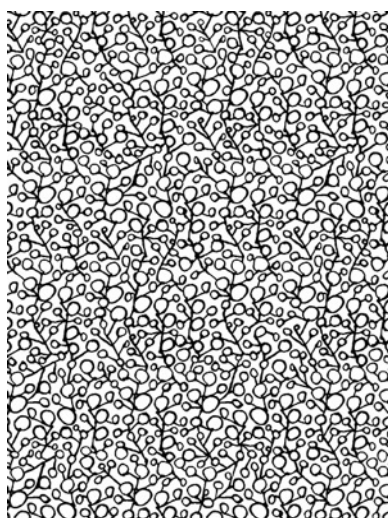
USCB 363 WK



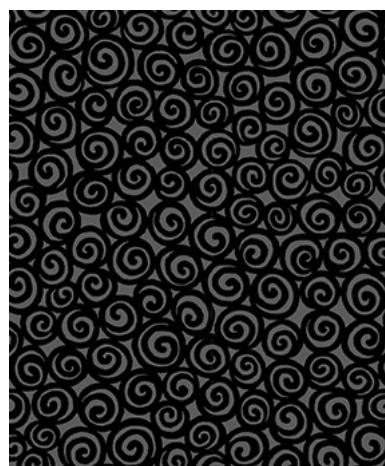
USCB 366 KW



USCB 364 K



USCB 364 WK



USCB 365 K



P&B Textiles

45-47 Washington St., Pawtucket, RI 02860
100% cotton

◆ www.pbtex.com

◆ Cold wash & dry

◆ 43"/44"

◆ 800-351-9087

◆ 253 W. 35th St., 11th floor. New York, NY 10001

◆ Colors may vary due to printing process

06/15