

Sweet Escape



Sweet Escape

Sweet Breeze quilt by Nancy Mahoney
featuring the *Sweet Escape* collection by P&B Textiles

Quilt Size: 67" square

Yardage

Fabric A	SWEE 532 E	1 ⁵ / ₈ yards
Fabric B	SWEE 533 E	1 yard
Fabric C	SWEE 534 E	1 yard
Fabric D	SWEE 535 E	³ / ₄ yard
Fabric E	SWEE 536 G	³ / ₈ yard
Fabric F	SWEE 537 G	1 ³ / ₈ yard
Fabric G	SWEE 537 K	1 ¹ / ₂ yard
Backing	any SWEE fabric	4 yards

Cutting

All strips are cut across the width of the fabric.

From fabric A (SWEE 532 E), cut:

- (5) 10 ¹/₂" x 42" strips; crosscut into (13) 10 ¹/₂" squares and (2) 5 ¹/₂" x 10 ¹/₂" rectangles

From fabric B (SWEE 533 E), cut:

- (3) 10 ¹/₂" x 42" strips; crosscut into (9) 10 ¹/₂" squares and (2) 5 ¹/₂" x 10 ¹/₂" rectangles

From fabric C (SWEE 534 E), cut:

- (3) 10 ¹/₂" x 42" strips; crosscut into (9) 10 ¹/₂" squares and (1) 5 ¹/₂" x 10 ¹/₂" rectangle

From fabric D (SWEE 535 E), cut:

- (7) 3" x 42" outer-border strips. Piece the strips and cut (2) 3" x 67" strips and (2) 3" x 62" strips.

From fabric E (SWEE 536 G), cut:

- (1) 10 ¹/₂" x 42" strips; crosscut into (2) 10 ¹/₂" squares and (1) 5 ¹/₂" x 10 ¹/₂" rectangle

From fabric F (SWEE 537 G), cut:

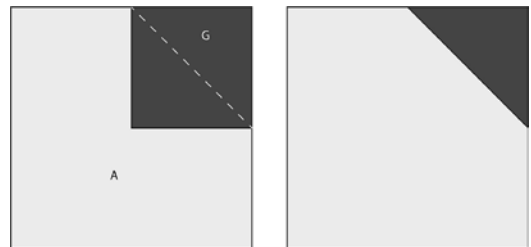
- (6) 5 ¹/₂" x 42" strips; crosscut into (36) 5 ¹/₂" squares
- (7) 1 ¹/₄" x 42" inner-border strips. Piece the strips and cut (2) 1 ¹/₄" x 62" strips and (2) 1 ¹/₄" x 60 ¹/₂" strips.

From fabric G (SWEE 537 K), cut:

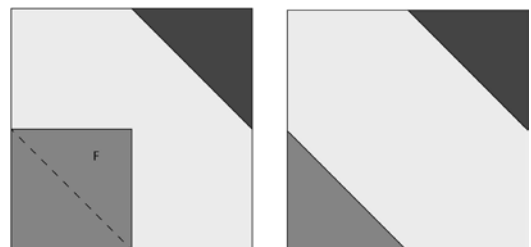
- (6) 5 ¹/₂" x 42" strips; crosscut into (36) 5 ¹/₂" squares
- (7) 2 ¹/₄" x 42" binding strips

Block Assembly

1. Draw a diagonal line on the wrong side of 13 fabric G squares. Place a marked square on the upper-right corner of a fabric A square. Sew on the drawn line and trim the excess corner fabric leaving a ¹/₄" seam allowance. Press the seam allowances toward the resulting triangle.

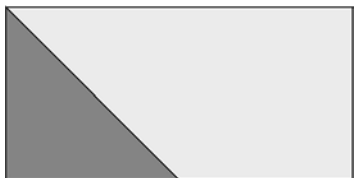


2. Draw a diagonal line on the wrong side of 13 fabric F squares. Place a marked square on the lower-left corner of the fabric A square from step 1. Sew on the drawn line and trim the excess corner fabric leaving a ¹/₄" seam allowance. Press the seam allowances toward the resulting triangle. In the same way, make a total of 13 fabric A blocks.



3. Repeat steps 1 and 2 using the remaining fabric G and fabric F squares and the fabric B, fabric C, and fabric E squares. Make 9 fabric B blocks, 9 fabric C blocks, and 2 fabric E blocks. You'll have 3 fabric G squares and 3 fabric F squares leftover to use in the next two steps.

4. Repeat step 2, sewing a marked fabric F square to the lower-left corner of a fabric A rectangle to make a half block. Sew a marked fabric F square to the lower-left corner of a fabric B rectangle and the fabric E rectangle. Make 1 half block of each fabric combination.



5. Repeat step 1, sewing a marked fabric G square to the upper-right corner of a fabric A rectangle to make a half block. Sew a marked fabric G square to the upper-right corner of a fabric B rectangle and the fabric C rectangle. Make 1 half block of each fabric combination.



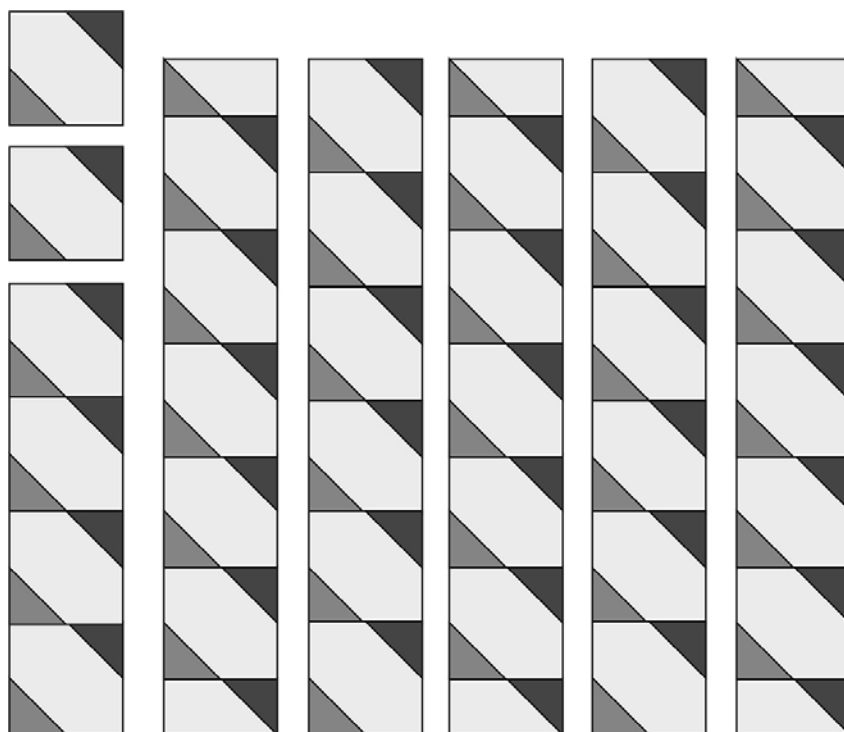
Quilt Assembly

6. Lay out the blocks and half blocks in six vertical rows as shown in the quilt-top layout diagram. Refer to the quilt photo for color placement guidance as needed. Join the blocks into rows and then join the rows.

7. Sew fabric F 60 1/2"-long border strips to opposite sides of the quilt top center. Then sew fabric F 62"-long border strips to the top and bottom of the quilt top to complete the inner border.

8. Sew fabric D 62"-long border strips to opposite sides of the quilt top center. Then sew fabric D 67"-long border strips to the top and bottom of the quilt top to complete the outer border.

9. Layer the quilt top with batting and backing; baste. Quilt as desired. Using the fabric G 2 1/4"-wide binding strips, bind the edges to finish.



Quilt Layout Diagram

Sweet Escape

Fabric Collection by **P&B Textiles**



SWEE 532 E



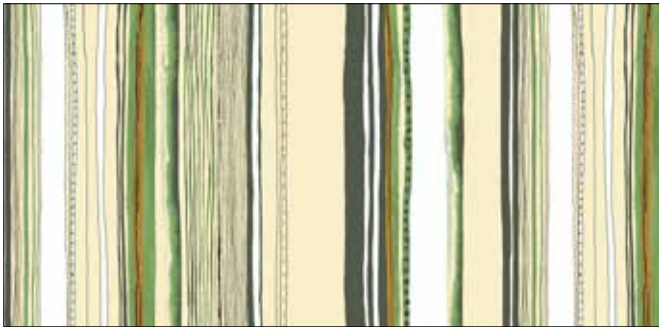
SWEE 533 E



SWEE 533 K



SWEE 534 E



SWEE 535 E



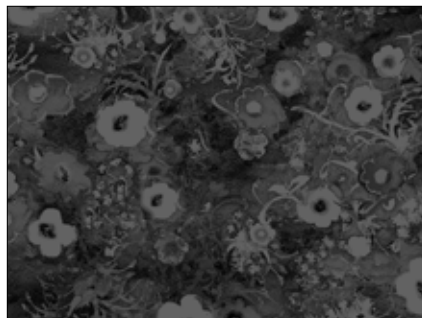
SWEE 536 E



SWEE 536 G



SWEE 537 G



SWEE 537 K



SWEE 538 G



P&B Textiles ♦ www.pbtex.com ♦ 800-351-9087

45-47 Washington St., Pawtucket, RI 02860 ♦ 237 W. 35th St., 11th floor, New York, NY 10001

⚠ 100% cotton ♦ Cold wash & dry ♦ 43" / 44" ♦ Colors may vary due to printing process

All fabrics shown at 25% scale.