

Sweet Spring

Tote Design by The Whimsical Workshop



Tote size: approximately 14 1/2" x 18 1/2"

*Featuring fabrics from
Sweet Spring by Debbie Monson*



P&B Textiles • pbtex.com • 800-351-9087 • 208 Clock Tower Square, Portsmouth, RI 02871

Sweet Spring

Fabric Collection by Debbie Monson

Pillow designed by The Whimsical Workshop

Skill Level: Confident Beginner • Finished Tote Size: approx. 14 1/2" x 18 1/2"

Tote Yardages:

Makes 2.

Fabric A: **SSPR 5325 PA** 1 panel

Fabric B: **SSPR 5329 G** 1/3 yard

Fabric C: **SSPR 5327 W** 1 yard

Additional supplies: 1 yard fusible fleece

Cutting Instructions:

Please read all instructions carefully before beginning. Strips are cut across the width of fabric (perpendicular to selvages) unless otherwise stated. All seams are sewn with a 1/4" seam unless otherwise stated. Label all pieces.

From Fabric A:

1. Fussy cut four 14 3/4" x 19" rectangles, centered on the panels. (Tote Body)

From Fabric B:

1. Cut two 4" strips; sub-cut four 4" x 20" strips. (Handles)

From Fabric C:

1. Cut two 14 3/4" strips; sub-cut four 14 3/4" x 19" rectangles. (Lining)

From Fusible Fleece:

1. Cut two 14 3/4" strips; sub-cut four 14 3/4" x 19" rectangles. (Tote Body)
2. Cut two 1" strips; sub-cut four 1" x 20" strips. (Handles)

Piecing Instructions:

The arrows in figures represent the fabric print direction. Pay attention to the fabric and unit orientations while assembling the various components.

1. Following the manufacturer's instructions, press one 14 3/4" x 19" piece of fusible fleece to the wrong side of the one 14 3/4" x 19" A rectangle to make one Unit 1 rectangle. Repeat with the matched Fabric A rectangle to make a second Unit 1 rectangle. (Figure 1)
2. Repeat Step 1 with the remaining A matched pair to make two Unit 1 sets total.

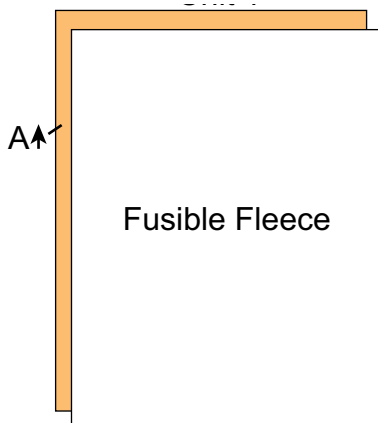


Figure 1
Make 2.

3. Place two Unit 1 rectangles right sides together. Sew down each side and across the bottom to make one Unit 2 rectangle (Figure 2). Turn the unit right sides out. Repeat to make a second Unit 2 rectangle.

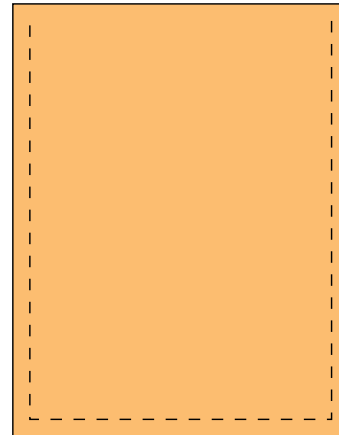


Figure 2
Make 2.

4. Place two 14 3/4" x 19" C rectangles right sides together. Sew down each side and across the bottom, leaving 4" opening for turning, to make one Lining rectangle (Figure 3). Repeat to make a second Lining rectangle.

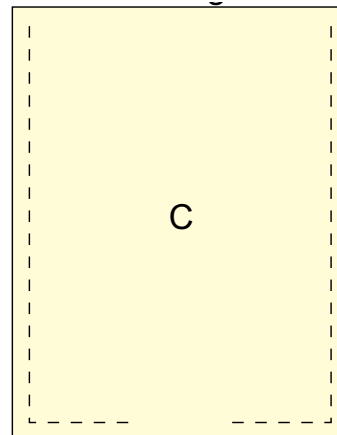


Figure 3
Make 2.

- To make the handles, fold one 4" x 20" B strip in half lengthwise and press. (Figure 4) Open the folded fabric and fold each long edge to the creased centerline and press. (Figure 5) Fold the pressed fabric in half again and press to make one 1" x 20" strip. (Figure 6)
- Place one 1" x 20" piece of fusible fleece inside the folded fabric. Top stitch down both long sides 1/8" in from the edge to make one Handle strip. Repeat Steps 4-5 to make four Handles total. (Figure 7)

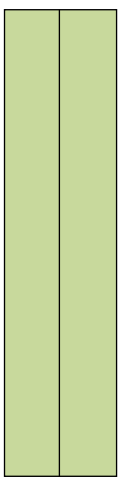


Figure 4

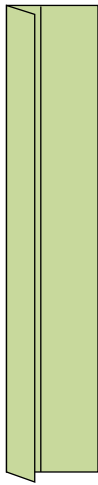


Figure 5



Figure 6



Figure 7

Make 4.

- Pin one Handle to the front of one Unit 2 rectangle measuring 2" in from each side edge (Figure 8). Repeat with the second handle and tote back to make one Outer Tote. Make sure the handles are hanging down the right side of the tote while assembling. Repeat to make a second Outer Tote.

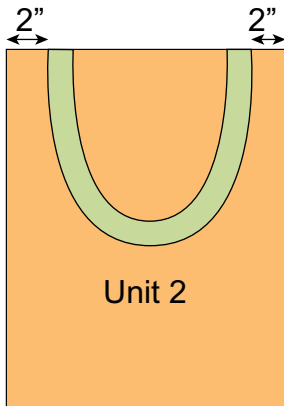


Figure 8
Make 2.

- Place one Outer Tote right sides together with one Lining aligning the top raw edges of the Outer Tote and Lining and pin together. Sew the Lining and Outer Tote together around the top edge, reinforcing the stitching at each Handle. Repeat with the second Lining and Outer Tote. (Figure 9)

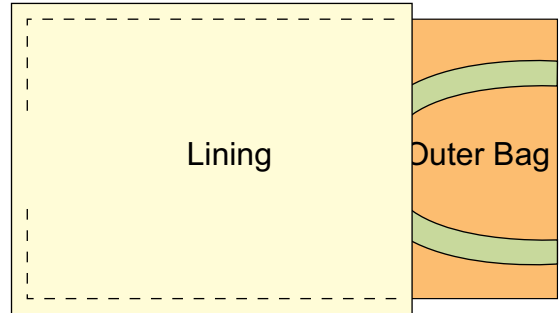


Figure 9 **Make 2.**

- Turn the Tote/Lining unit right side out through the opening in the Lining. Press as needed and top stitch the opening closed. Push the Lining into the Bag, aligning the sides and bottom. Press to complete one Tote. Repeat with the second Bag/Lining unit. (Figure 10)

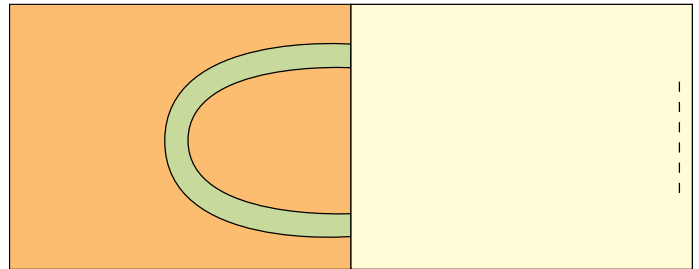


Figure 10 **Make 2.**

Sweet Spring

Fabric Collection by Debbie Monson



SSPR 5325 PA*



SSPR 5326 B



SSPR 5326 Y



SSPR 5327 DB



SSPR 5327 W*



SSPR 5327 YO



SSPR 5328 B



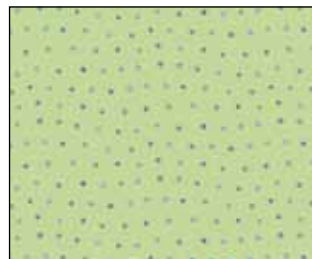
SSPR 5328 G



SSPR 5328 Y



SSPR 5329 B



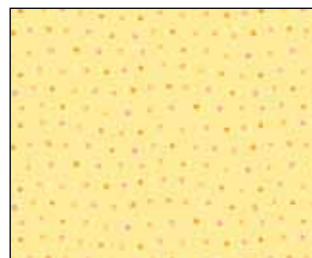
SSPR 5329 G*



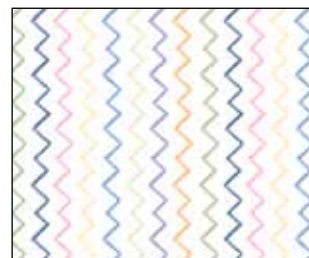
SSPR 5329 P



SSPR 5329 W



SSPR 5329 Y



SSPR 5330 MU



*Fabrics used in quilt.

†Backing