
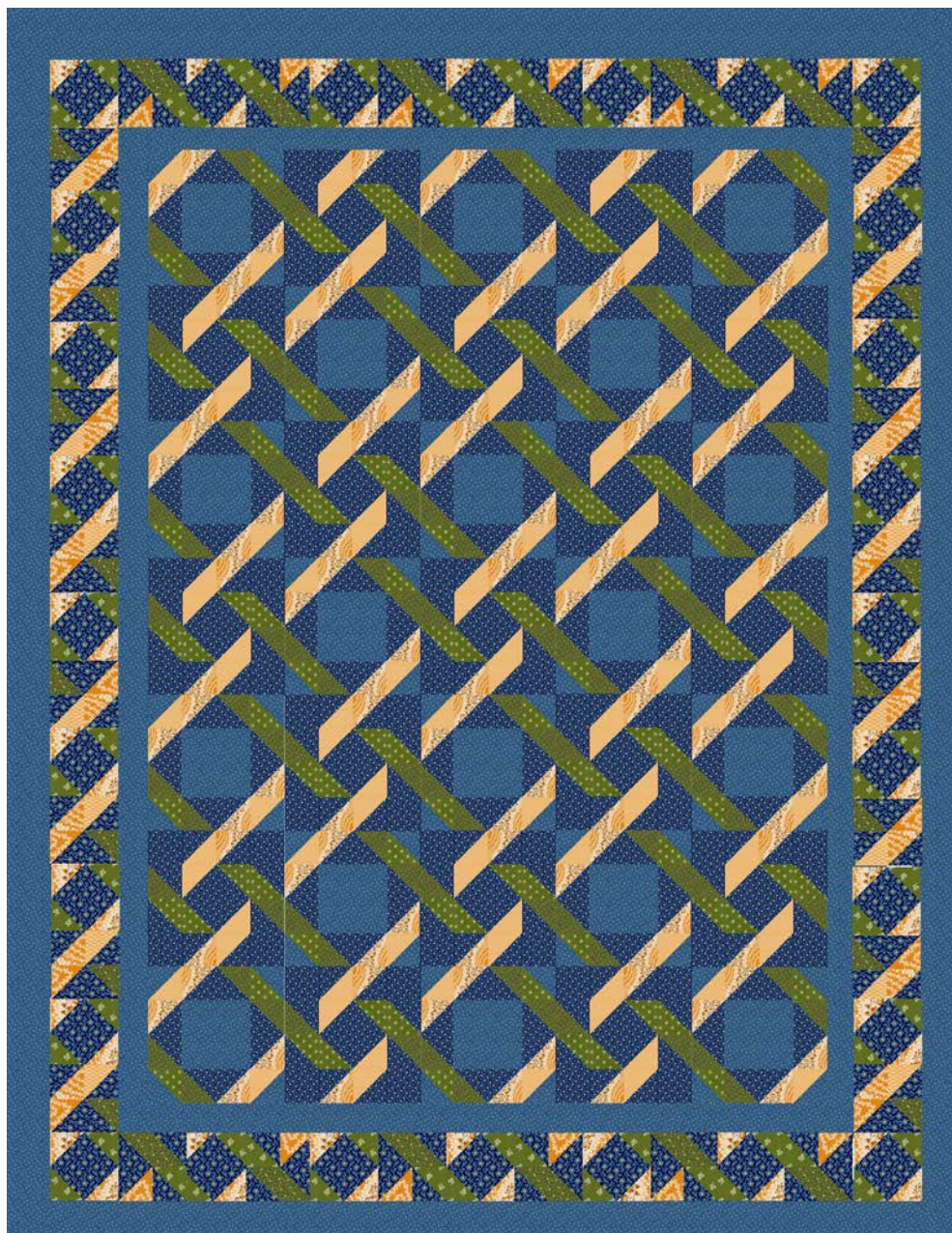


# *Star of Bethlehem*

Fabric collection inspired by  THE ROCKY MOUNTAIN  
**QUILT**  
MUSEUM  
Stories We Weave Quilt Designed by Leslie Sonkin




*Washington Street Studio*



A DIVISION OF P&B TEXTILES



# Star of Bethlehem

Fabric collection inspired by  THE ROCKY MOUNTAIN  
MUSEUM QUILT

Stories We Weave Quilt Designed by Leslie Sonkin  
Skill level: Intermediate • Finished Quilt Size: 70"x90", Block Size: 10"

## Supply List

Medium Blue/White Print - 26505-BLU1: 3-1/2 yds for blocks, border #1, border #3 and binding	Green/White Mini Floral Print- 26507-GRE1: 7/8 yd for blocks and units
Gold Chain Print - 26503-CHE1: 1 yd for blocks and units	Dark Blue/Yellow Floral - 26500-BLU1: 3 yds for blocks and units
Green/Yellow Dot- 26505-GRE1: 1 yd for blocks and units	Backing: 5-7/8 yds
Gold/White Wavy Floral Stripe Print-26501-CHE1: 7/8 yd for blocks and units	Batting: 78" x 98"

## Cutting

### Medium Blue/White Print:- 26505-BLU1

For Border #1:  
2 strips 3" x 70-1/2" for sides  
2 strips 3" x 55- 1/2" for top/bottom

For Border # 3:  
2 strips 3" x 88" for sides  
2 strips 3" x 73" for top/bottom

4 strips 2-1/4" x 85 for binding  
36 squares (A) - 3-3/8" x 3-3/8"  
18 squares (C) - 5-1/2" x 5-1/2"

### Gold Chain Print: - 26503-CHE1

43 squares (A) 3-3/8" x 3-3/8"  
45 squares 3-3/8" x 3-3/8" cut diagonally to yield 90 triangles (E)

### Green/Yellow Dot - 26505-GRE1:

41 squares (A) 3-3/8" x 3-3/8"  
45 squares 3-3/8 x 3-3/8" cut diagonally to yeild 90 triangles (E)

### Gold/White Wavy Floral Print- 26501-CHE1:

77 squares (A) 3-3/8" x 3-3/8"

### Green//White Mini Floral Print - 26507-GRE1:

75 squares (A) 3-3/8" x 3-3/8"

### Dark Blue/Yellow Floral- 26500-BLU1:

96 squares (A) 3-3/8" x 3-3/8"  
26 squares (B) 6-1/4" x 6-1/4"  
45 squares (D) 4" x 4"  
68 squares (F) 3" x 3"



A DIVISION OF P&B TEXTILES

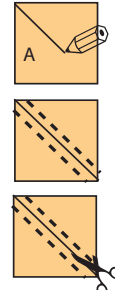
Washington Street Studio • [www.washingtonstreetstudio.com](http://www.washingtonstreetstudio.com) • 800-351-9087  
45-47 Washington Street, Pawtucket, RI 02860 • 237 W. 35th Street, 11th Fl., New York, NY 10001

Assembly

This quilt uses two alternating blocks to create the lattice design across the quilt. Experiment using different shades and color values to change the look of the design.

1. Triangle-Squares: With right sides together and the lighter fabric on top, pair one square of each color that makes the unit. On the lighter patch, draw a line from corner to corner. Stitch 1/4" out from both sides of the line.

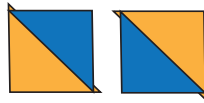
Triangle Squares



Cut apart on the marked line.

With the darker fabric up, open out the top patch and press the unit.

A pair of squares will yield 2 units.



To create the square units needed:

Pair 18 Medium Blue/White print A squares with 18 Gold Chain Print A squares to make 36 Unit 1 squares.

Pair 18 Medium Blue/White print A squares with 18 Green/Yellow Print A squares to make 36 Unit 2 squares.



Pair the Dark Blue/Yellow A's as follows:

with 25 Gold/White Wavy Florals A's to make 50 of Unit #3

with 25 Gold/White Chain to make 50 of Unit #4

with 23 Green/White Floral A's to make 46 of Unit #5

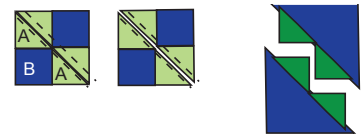
with 23 Green/Yellow Print A's to make 46 of Unit #6



Use D and E squares to make 45 Unit 7 squares.

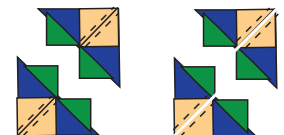


2. Flying Geese units: Align 2 green/white A's on opposite corners of a dark blue multiprint B, right sides together. Draw a diagonal line as shown and then stitch 1/4" out on both sides of the line. Cut on the line, open the A's and press.

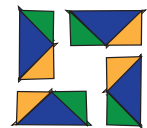


On the remaining corner of each of these units, align Gold/White Wavy Florals.

Draw a line from corner to corner on each A and sew 1/4" out on both sides of the line. Cut on the marked lines and press open.



Each set of four (4) A units and one (1) B unit makes two (2) Flying Geese 1 Units and two (2) Flying Geese 2 Units.



continued on next page



A DIVISION OF P&B TEXTILES

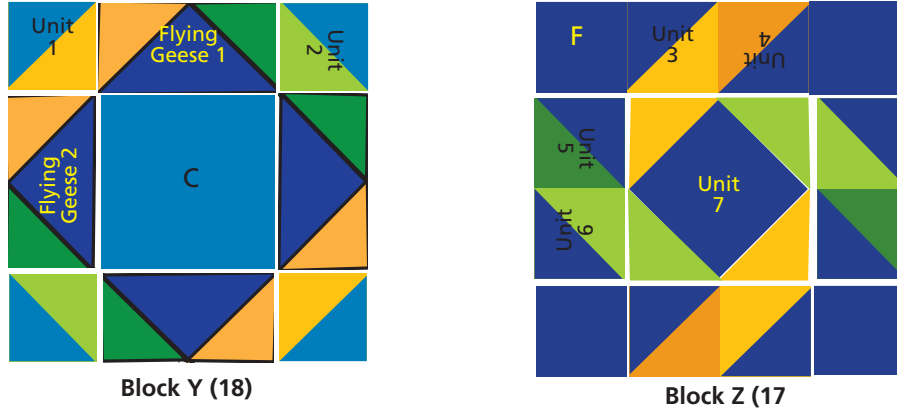
Washington Street Studio • www.washingtonstreetstudio.com • 800-351-9087

45-47 Washington Street, Pawtucket, RI 02860 • 237 W. 35th Street, 11th Fl., New York, NY 10001

Follow the diagram to make 52 units of Flying Geese 1 and 52 units of Flying Geese 2.

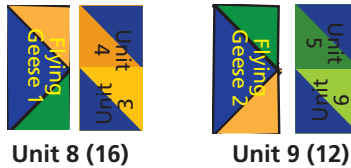


3. Piece units as shown to make the blocks. Make 18 Block Y and 17 Block Z



4. NOTE THE DIRECTION OF THE FLYING GEESE UNITS IN THE DIAGRAM BELOW.

Join the Flying Geese 1 to the remaining Unit 3 and Unit 4 pieces to make 16 Unit 8 pieces.  
 Join Flying Geese 2 to the remaining Unit 5 and Unit 6 pieces to make twelve (12) Unit 9 pieces  
 There will be 4 unused Flying Geese 2.

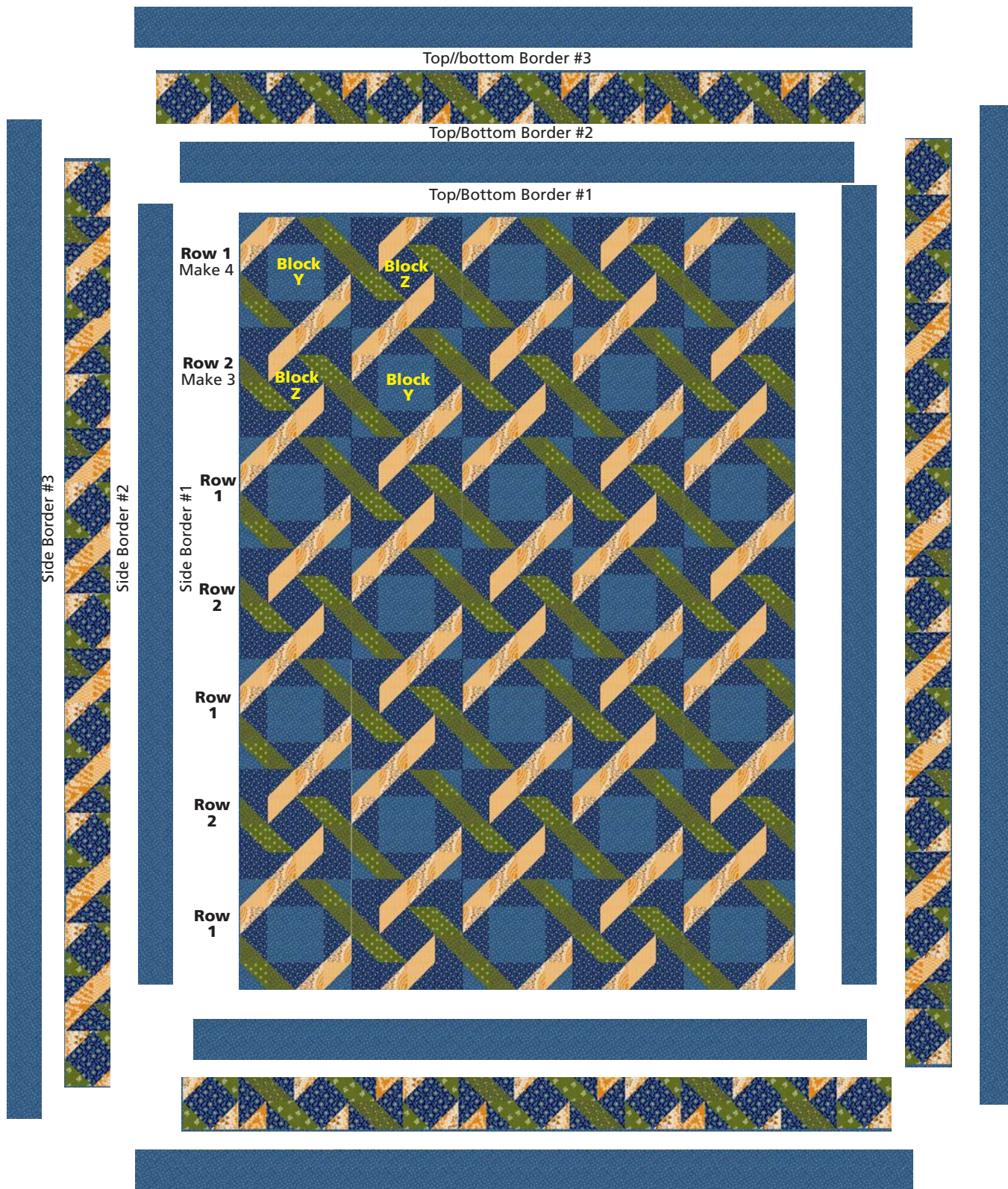


5. Refer to the assembly diagram to join the blocks to make four (4) of row 1 and three (3) of row 2. Sew rows together.

6. Join Unit 7 pieces and Unit 8 pieces as shown to make Border 2 side strips. Join Unit 7 and Unit 9 pieces to make Border 2 top and bottom strips.

7. Matching centers and ends, sew the side border 1 strips to quilt. Add top and border 1 strips. Repeat to add Border 2 strips. Add the Border 3 side strips and trim any excess length. Add Border 3 top and bottom strips.

8. Layer quilt top, batting and backing together and quilt as desired.



**INSIDE FRONT COVER**

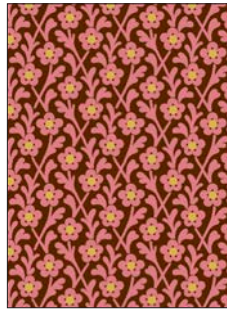
**INSIDE BACK COVER**



26500-BLU1



26500-GRE1



26500-PIN1



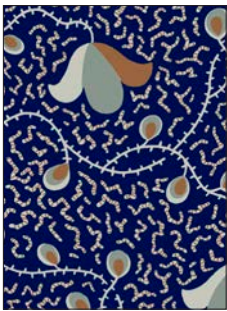
26501-BLU1



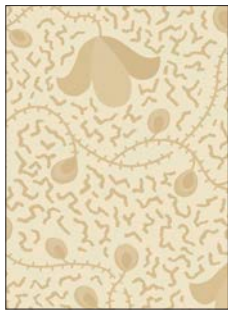
26501-CHE1



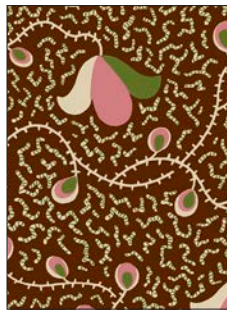
26501-PIN1



26502-BLU1



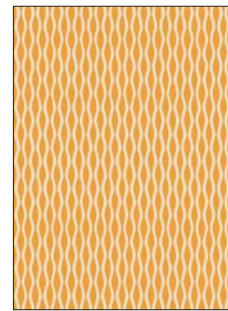
26502-BEI1



26502-BRO1



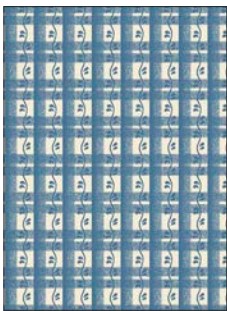
26503-BLU1



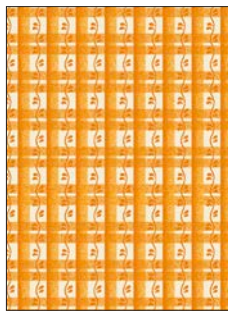
26503-GRE1



26503-PIN1



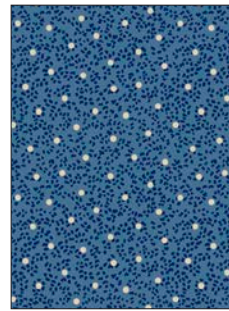
26504-BLU1



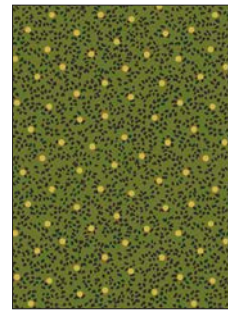
26504-CHE1



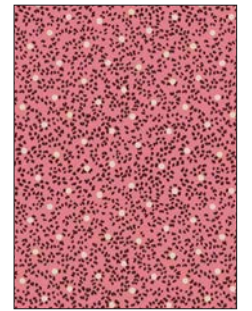
26504-BRO1



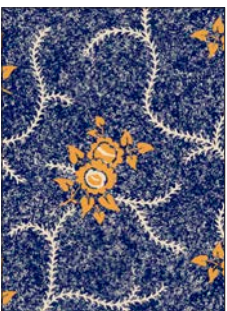
26505-BLU1



26505-GRE1



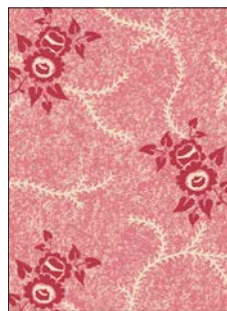
26505-PIN1



26506-BLU1



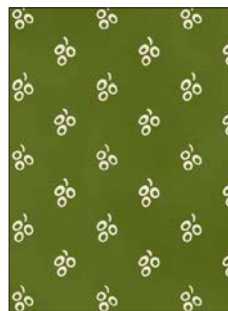
26506-GRE1



26506-PIN1



26507-BLU1



26507-GRE1



26507-BRO1



Washington Street Studio • [www.washingtonstreetstudio.com](http://www.washingtonstreetstudio.com) • 800-351-9087  
45-47 Washington St., Pawtucket, RI 02860 ♦ 253 W. 35th St., 11th floor, New York, NY 10001

▲ 100% cotton ♦ Cold wash & dry ♦ 43" / 44" ♦ Colors may vary due to printing process