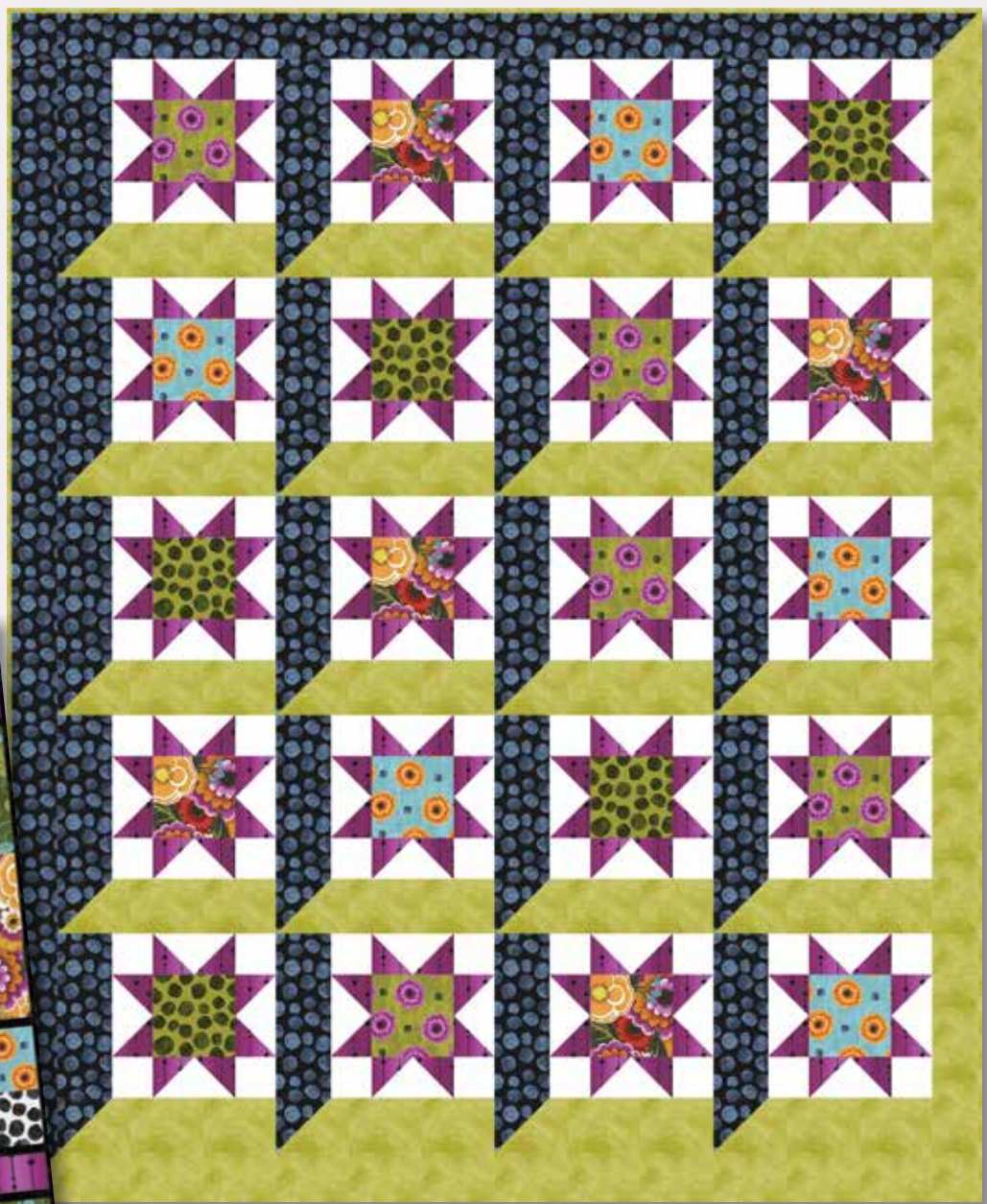


florianna

Star Blossoms by Kate Coleran



RB
&
BOUTIQUE

Table Runner, Placemat & Mug Rug by Larene Smith

Florianna

Star Blossoms Quilt by Kate Colleran
featuring the *Florianna* collection by Carrie Tasman
for P&B Textiles • Quilt Size: 53" x 65"

yardage

Fabric A	FLOR 492 P	3/4 yard
Fabric B	CSNE W*	1 3/4 yards
Fabric C	FLOR 494 G	1/4 yard
Fabric D	FLOR 488 MU	1/4 yard
Fabric E	FLOR 494 B	1/4 yard
Fabric F	FLOR 493 G	1/4 yard
Fabric G	SUEM 300YA**	1 5/8 yards
Fabric H	FLOR 493 K	1 1/8 yards
Backing:	any FLOR fabric	3 2/3 yards

* From the *Color Spectrum* collection

** From the *Suede Midtones* collection

cutting

All strips are cut across the width of the fabric.

From fabric A (FLOR 492 P), cut:

- (7) 3 1/8" x 42" strips; cut into (80) 3 1/8" squares.
Cut each square in half diagonally to yield 160 half square triangles.

From fabric B (CSNE W), cut:

- (6) 2 3/4" x 42" strips; cut into (80) 2 3/4" x 2 3/4" squares.
- (7) 5 3/4" x 42" strips; cut into (20) 5 3/4" x 5 3/4" squares. Cut each square in half diagonally twice to yield 80 quarter square triangles.

From fabric C (FLOR 494 G), cut:

- (1) 5" x 42" strip; cut into (5) 5" x 5" center squares.

From fabric D (FLOR 488 MU), cut:

- (1) 5" x 42" strip; cut into (5) 5" x 5" center squares.

From fabric E (FLOR 494 B), cut:

- (1) 5" x 42" strip; cut into (5) 5" x 5" center squares.

From fabric F (FLOR 493 G), cut:

- (1) 5" x 42" strip; cut into (5) 5" x 5" center squares.

From fabric G (SUEM 300YA), cut:

- (1) 3 7/8" x 42" strip; cut into (10) 3 7/8" squares.
- (5) 3 1/2" x 42" strips; cut into (20) 3 1/2" x 9 1/2" rectangles.
- (1) 3 3/8" x 42" strip; cut into (1) 3 3/8" square.
- (3) 3" x 42" strips; piece together and cut into (1) 3" x 60 1/2" side border and (1) 3" x 51 1/2" bottom border.
- (7) 2 1/4" x 42" binding strips

From fabric H (FLOR 493 K), cut:

- (1) 3 7/8" x 42" strip; cut into (10) 3 7/8" squares.
- (5) 3 1/2" x 42" strips; cut into (20) 3 1/2" x 9 1/2" rectangles.
- (1) 3 3/8" x 42" strip; cut into (1) 3 3/8" square.
- (3) 3" x 42"; piece strips together and cut into (1) 3" x 60 1/2" side border and (1) 3" x 51 1/2" top border.

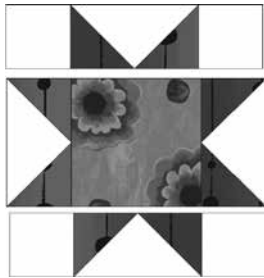


making the block

1. Sew a fabric A half square triangle to both short sides of a Fabric B quarter square triangle to make one flying geese unit. The flying geese unit should measure $2\frac{3}{4}'' \times 5''$ unfinished. Make 80 units.



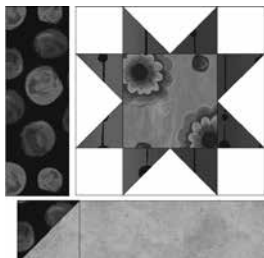
2. Lay out four flying geese units from step 1 and four fabric B $2\frac{3}{4}'' \times 2\frac{3}{4}''$ squares and a fabric C center square as shown. Sew the pieces into rows and then sew the rows together. The star unit should measure $9\frac{1}{2}''$ square, unfinished. Repeat with all the fabric C, D, E and F center squares to make 20 star units.



3. Layer one $3\frac{7}{8}'' \times 3\frac{7}{8}''$ fabric G square right sides together with a $3\frac{7}{8}'' \times 3\frac{7}{8}''$ fabric H square. Draw a diagonal line on the wrong side of the fabric G square. Sew $\frac{1}{4}''$ away from the diagonal line on both sides. Cut the squares apart on the line to make two half-square-triangle units, measuring $3\frac{1}{2}'' \times 3\frac{1}{2}''$ square. Repeat to make a total of 20 half square triangle units.

4. Sew a $3\frac{1}{2}'' \times 9\frac{1}{2}''$ fabric H rectangle the left side edge of one of the star units as shown.

5. Lay out a half-square triangle unit from step 3 and a $3\frac{1}{2}'' \times 9\frac{1}{2}''$ fabric G rectangle as shown. Sew together. Sew the row to the bottom of the star unit. The star block should measure $12\frac{1}{2}''$ square, unfinished. Make 20 star blocks.



assembling the quilt top

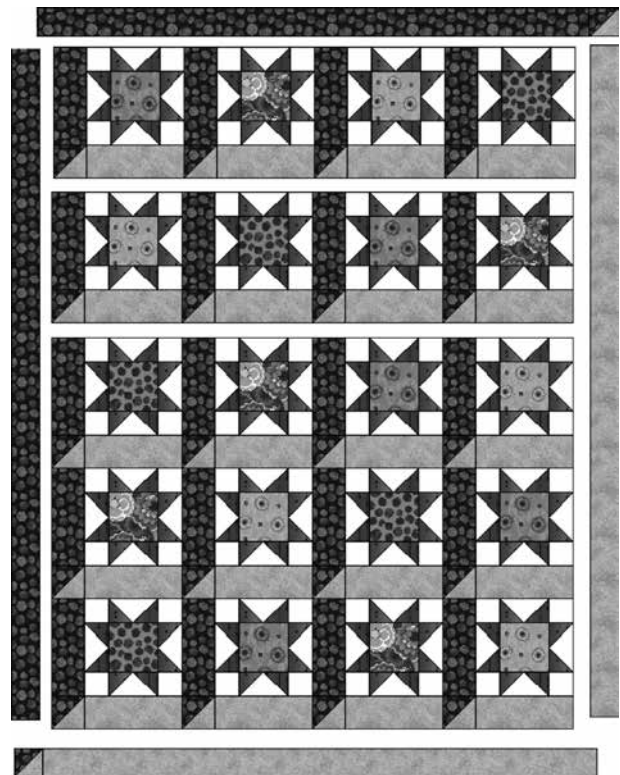
6. Lay out the blocks in five rows of four blocks each following the quilt assembly diagram. Move the blocks around until you like the arrangement. Sew each block together in a row. Then sew the rows together.

7. Sew a $3'' \times 60\frac{1}{2}''$ fabric H border strip to the left side edge of the quilt top as shown. Then sew a $3'' \times 60\frac{1}{2}''$ fabric G border strip to the right side edge of the quilt top.

8. Repeat step 3 with a $3\frac{3}{8}''$ fabric G square and a $3\frac{3}{8}''$ fabric H square to make two half square triangle units. The half square triangle units should measure $3'' \times 3''$.

9. Sew a half square triangle unit from step 8 to the fabric G and fabric H top and bottom borders as shown. Sew the borders to the quilt top and bottom of the quilt. The quilt top should measure $53'' \times 65''$, finished.

10. Layer the quilt top with batting and backing; baste. Quilt as desired. Using the $2\frac{1}{4}''$ wide fabric G binding strips, bind the edges to finish.



QUILT ASSEMBLY DIAGRAM

Florianna

Table Runner, Placemats & Mug Rug by Larene Smith
of The Quilted Button featuring the *Florianna* collection
by Carrie Tasman for P&B Textiles

Pattern includes yardage requirements and instructions for
1 Table Runner, 4 Placemats and 4 Mug Rugs

Table Runner (TR) size: 52" x 18" • Placemat (PM) size: 18" x 13" • Mug Rug (MR) size: 8" x 6"

yardage

Fabric A	CWEA 200 RO*	1/4 yard
Fabric B	FLOR 488 MU	7/3 yard
Fabric C	SUED 300 K**	1 1/2 yards
Fabric D	FLOR 492 P	1/4 yard
Fabric E	FLOR 493 W	3/8 yard
Fabric F	FLOR 494 B	1/4 yard
Fabric G	FLOR 494 G	1/4 yard
Fabric H	FLOR 491 G	1/2 yard
Backing	Any FLOR Fabric	2 1/2 yards

* From the *Color Weave* collection

** From the *Suede* collection

cutting

From Fabric A (CWEA 200 RO), cut:

- (3) 1" x 42" strips; sub-cut into (8) 1" x 4" rectangles and (8) 1" x 7 1/2" rectangles for TR & PM

From Fabric B (FLOR 488 MU), cut:

- (2) 9 1/2" x 42" strips; sub-cut into (8) 9 1/2" x 9" rectangles for TR & PM
- (1) 6 1/2" x 42" strips; sub-cut into (4) 6 1/2" x 8 1/2" rectangles for MR

From Fabric C (SUED 300 K), cut:

- (2) 1" x 42" strips; sub-cut into (8) 1" x 9 1/2" rectangles for TR & PM
- (3) 1" x 42" strips; sub-cut into (8) 1" x 12 1/2" rectangles for TR & PM
- (4) 1" x 42" strips for TR & PM
- (15) 2 1/2" x 42" binding strips for TR, PM & MR

From Fabric D (FLOR 492 P), cut:

- (1) 2 1/2" x 42" strips for TR & PM

From Fabric E (FLOR 493 W), cut:

- (2) 3 1/2" x 42" strips for TR & PM
- (1) 3 1/2" x 42" strip; sub-cut into (8) 3 1/2" squares for TR & PM

From Fabric F (FLOR 494 B), cut:

- (1) 4" x 42" strip; sub-cut into (8) 4" x 5 1/2" rectangles for TR & PM

From Fabric G (FLOR 494 G), cut:

- (1) 4" x 42" strip; sub-cut into (8) 4" x 7" rectangles for TR & PM

From Fabric H (FLOR 491 G), cut:

- (2) 6" x 42" strips; sub-cut into (8) 6" x 7 1/2" rectangles for TR & PM

table runner block assembly and finishing

Refer to this illustration of the Finished Block as a guide.

NOTE – A Partial Seam is when you only sew about 1/2 of the way down the edge and then come back later to finish that seam.



FINISHED BLOCK A

FINISHED BLOCK B IS A MIRROR IMAGE OF THIS BLOCK

BLOCK A

1. Sew (1) Fabric C 1" x 9 1/2" rectangle to the RIGHT side of (1) Fabric B 9" x 9 1/2" rectangle to measure 9 1/2" square, unfinished. Make (4) and set aside for use later. Two will be used for Block B.

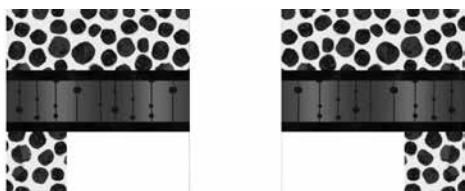
2. Sew the following strips together to measure 6 1/2" x 42" – (1) Fabric E 3 1/2", (1) Fabric C 1", (1) Fabric D 2 1/2", (1) Fabric C 1". Sub-cut into (4) 6 1/2" x 9 1/2" rectangles. Label "Set A". Set aside (2) for Block B.

3. Sew the following pieces together at the 4" edge to measure 12 1/2" x 4" – Fabric F 5 1/2" x 4", Fabric A 1" x 4", Fabric G 7" x 4". Make (4). Label "Set B" and set aside (2) for Block B.

Table Runner, Placemats & Mug Rug instructions continued from flap.

4. Sew (1) Fabric A $1'' \times 7 \frac{1}{2}''$ rectangle to the left side of (1) Fabric H $6'' \times 7 \frac{1}{2}''$ rectangle. Make (4). Label "Set C" and set aside (2) for Block B.

5. Sew (1) Fabric E $3 \frac{1}{2}''$ square to the bottom left edge of (1) Set A as illustrated below with a PARTIAL SEAM to create the upper right corner of Block A.



BLOCK A PARTIAL SEAM BLOCK B PARTIAL SEAM

6. Sew (1) of the $9 \frac{1}{2}''$ squares from Step 1 to the LEFT side of Block A. Sew (1) Fabric C $12 \frac{1}{2}'' \times 1''$ rectangle to the bottom of the block. Sew (1) of Set B to the bottom Fabric C. Sew (1) of Set C to the bottom right edge. Complete the PARTIAL SEAM to complete Block A at $18 \frac{1}{2}'' \times 13 \frac{1}{2}''$, unfinished. Make (2). Label "Block A" and set aside for use later.

BLOCK B (Mirror image of Block A)

7. Sew (1) Fabric E $3 \frac{1}{2}''$ square to the bottom right edge of (1) Set A as illustrated above with a PARTIAL SEAM to create the upper left corner of Block B. Sew (1) of the $9 \frac{1}{2}''$ squares from Step 1 to the RIGHT side of Block B. Sew (1) Fabric C $12 \frac{1}{2}'' \times 1''$ rectangle to the bottom of the block. Sew (1) of Set B (ROTATED) to the bottom of Fabric C. Sew (1) of Set C to the bottom left edge. Complete the PARTIAL SEAM to complete Block B at $18 \frac{1}{2}'' \times 13 \frac{1}{2}''$ unfinished. Make (2). Label "Block B" and set aside for use later.

8. Sew (4) blocks together at the $18 \frac{1}{2}''$ edge beginning with Block A and alternating between Block A and Block B as illustrated on the cover to make the Table Runner, which measures $18'' \times 52''$, finished.

9. Layer the backing, batting and Table Runner. Quilt as desired.

10. Using Fabric C $2 \frac{1}{2}''$ strips, sew on the binding to finish the Table Runner. The balance of the strips will be used for the Placemats and Mug Rugs.

placemat block assembly and finishing

Refer to the illustration on the cover as a guide.

11. Sew (1) Fabric C $1'' \times 9 \frac{1}{2}''$ rectangle to the RIGHT side of (1) Fabric B $9'' \times 9 \frac{1}{2}''$ rectangle. Make (4) $9 \frac{1}{2}''$ squares.

12. Sew the following strips together to measure $6 \frac{1}{2}'' \times 42''$ – (1) Fabric E $3 \frac{1}{2}''$, (1) Fabric C $1''$, (1) Fabric D $2 \frac{1}{2}''$, (1) Fabric D $1''$. Sub-cut into (4) $6 \frac{1}{2}'' \times 9 \frac{1}{2}''$ rectangles. Label "Set D".

13. Sew the following together pieces together at the $4''$ edge to measure $12 \frac{1}{2}'' \times 4''$ – Fabric F $5 \frac{1}{2}'' \times 4''$, Fabric A $1'' \times 4''$, Fabric G $7'' \times 4''$. Make (4). Label "Set E".

14. Sew (1) Fabric A $1'' \times 7 \frac{1}{2}''$ rectangle to the left side of (1) Fabric H $6'' \times 7 \frac{1}{2}''$ rectangle. Make (4). Label "Set F".

15. Sew (1) Fabric E $3 \frac{1}{2}''$ square to the bottom left edge of (1) Set D as illustrated in Step 5 with a PARTIAL SEAM to create the upper right corner of the block. Sew (1) of the $9 \frac{1}{2}''$ squares from Step 11 to the LEFT side of the block. Sew (1) Fabric C $12 \frac{1}{2}'' \times 1''$ rectangle to the bottom of the block. Sew (1) of Set E to the bottom of Fabric C. Sew (1) of Set F to the bottom right edge, then complete the PARTIAL SEAM to complete the Placemat at $18'' \times 13''$, finished. Make (4).

16. Layer the backing, batting and Placemat. Quilt as desired.

17. Using Fabric C $2 \frac{1}{2}''$ strips, sew on the binding to finish the Placemats.

mug rug assembly and finishing

Refer to the illustration on the cover as a guide.

18. Layer the backing, batting and Mug Rug (Fabric B $8 \frac{1}{2}'' \times 6 \frac{1}{2}''$ rectangle, unfinished). Quilt as desired.

19. Using the remainder of Fabric C $2 \frac{1}{2}''$ -wide binding strip, sew on the binding to finish the (4) Mug Rugs.

Florianna

Fabric Collection by **Carrie Tasman**



FLOR 488 MU



FLOR 489 MU



FLOR 491 G



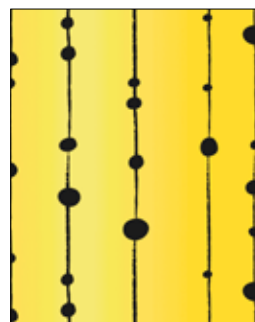
FLOR 491 K



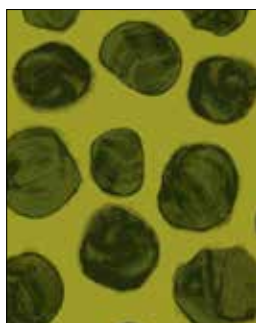
FLOR 492 P



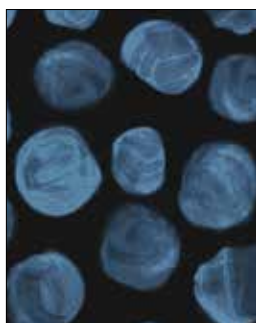
FLOR 492 R



FLOR 492 Y



FLOR 493 G



FLOR 493 K



FLOR 493 W



FLOR 494 B



FLOR 494 G



P&B Textiles ♦ www.pbtex.com ♦ 800-351-9087

45-47 Washington St., Pawtucket, RI 02860 ♦ 253 W. 35th St., 11th floor, New York, NY 10001

▲ 100% cotton ♦ Cold wash & dry ♦ 43" / 44" ♦ Colors may vary due to printing process

All fabrics shown at 50% scale except the three main fabrics which are 25%.