

Art Glass

Shattered Glass Pillow by Jenny Kae Quilts



Art Glass

Shattered Glass Pillow by Jenny Kae Quilts
featuring the *Art Glass* collection by Rose Ann Cook
for P&B Textiles • Size: 18" square

Yardage

Fabric A	ARTG 820 K	1/4 yard
Fabric B	ARTG 815 MU	1/8 yard
Fabric C	ARTG 820 Y	1/8 yard
Fabric D	ARTG 820 G	1/8 yard
Fabric E	ARTG 820 B	1/8 yard
Fabric F	ARTG 818 B	1/8 yard
Backing	any ARTG fabric 18" by 18" pillow form	5/8 yard

Cutting

This is a foundation piecing project. All fabric, except the borders and backing, will be cut during the construction process. 1/4" seam allowances used.

Use fabric A (ARTG 820 K) for Shapes:

A1	A3
B1	B3
C1	C3
D1	D3

Use fabric B (ARTG 815 MU) for Shapes:

A2	D4
----	----

Use fabric C (ARTG 820 Y) for Shapes:

A4	B2
----	----

Use fabric D (ARTG 820 G) for Shapes:

C4	D2
----	----

Use fabric E (ARTG 820 B) for Shapes:

B4	C2
----	----

From fabric F (ARTG 818 B), cut:

- (2) 1 1/2" x 16" border strips
- (2) 1 1/2" x 18" border strips

From backing fabric, cut:

- (1) 18 1/2" square

Block Assembly

Refer to the block and section diagrams for placement guidance throughout. Using your preferred foundation piecing method, work one section at a time. 1/4" seam allowances used throughout.

SECTION A

1. Place with fabric A on foundation shape A1. Align fabric B on shape A2 and stitch into place. Trim and press. Place fabric A on shape A3 and stitch into place. Trim and press. Place fabric C on shape A4 and stitch into place. Trim and press.

SECTION B

2. Place with fabric A on foundation shape B1. Align fabric C on shape B2 and stitch into place. Trim and press. Place fabric A on shape B3 and stitch into place. Trim and press. Place fabric E on shape B4 and stitch into place. Trim and press.

SECTION C

3. Place with fabric A on foundation shape C1. Align fabric E on shape C2 and stitch into place. Trim and press. Place fabric A on shape C3 and stitch into place. Trim and press. Place fabric D on shape C4 and stitch into place. Trim and press.

SECTION D

4. Place with fabric A on foundation shape D1. Align fabric D on shape D2 and stitch into place. Trim and press. Place fabric A on shape D3 and stitch into place. Trim and press. Place fabric B on shape D4 and stitch into place. Trim and press.

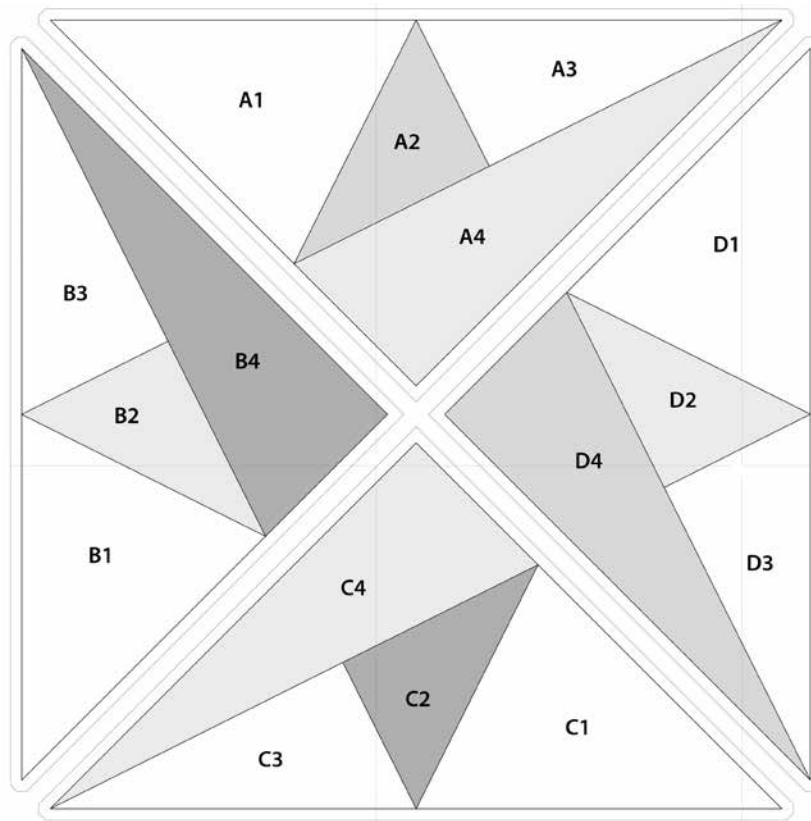
5. Join section A to section B. Join section C to section D. Join these two larger pieces together. The block should measure 16 1/2" square.

Border Assembly

6. Sew fabric F $1\frac{1}{2}$ " x 16" border strips to opposite sides of the block top. Then sew $1\frac{1}{2}$ " x 18" border strips to the top and bottom of the quilt top to complete the outer border.

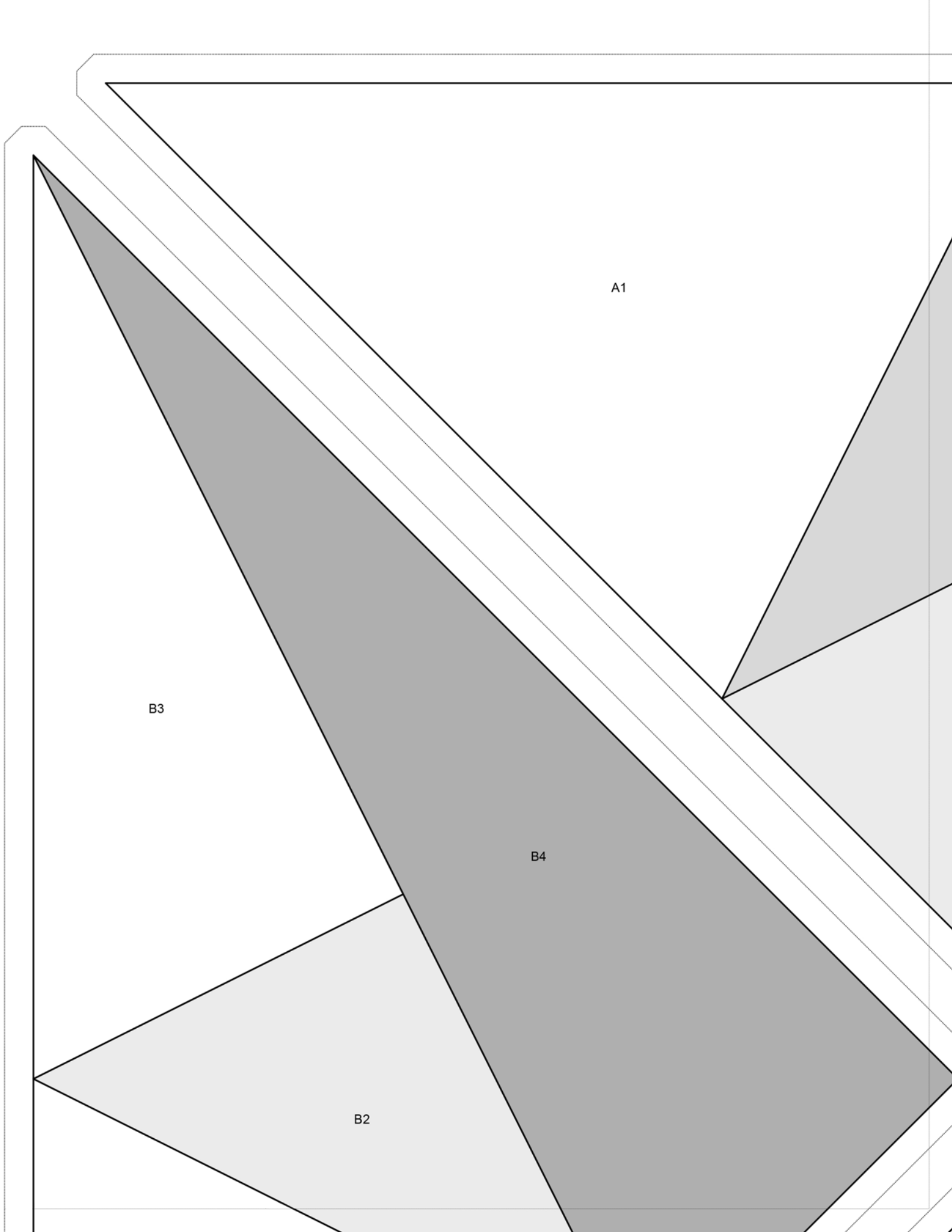
Pillow Assembly

7. With right sides together, stitch pillow top to backing, leaving a 6" to 8" gap. Turn right side out and stuff with 18" square pillow form. Hand stitch the opening closed.



You will need to piece together the actual size patterns on the following pages to form a completed template as shown here.



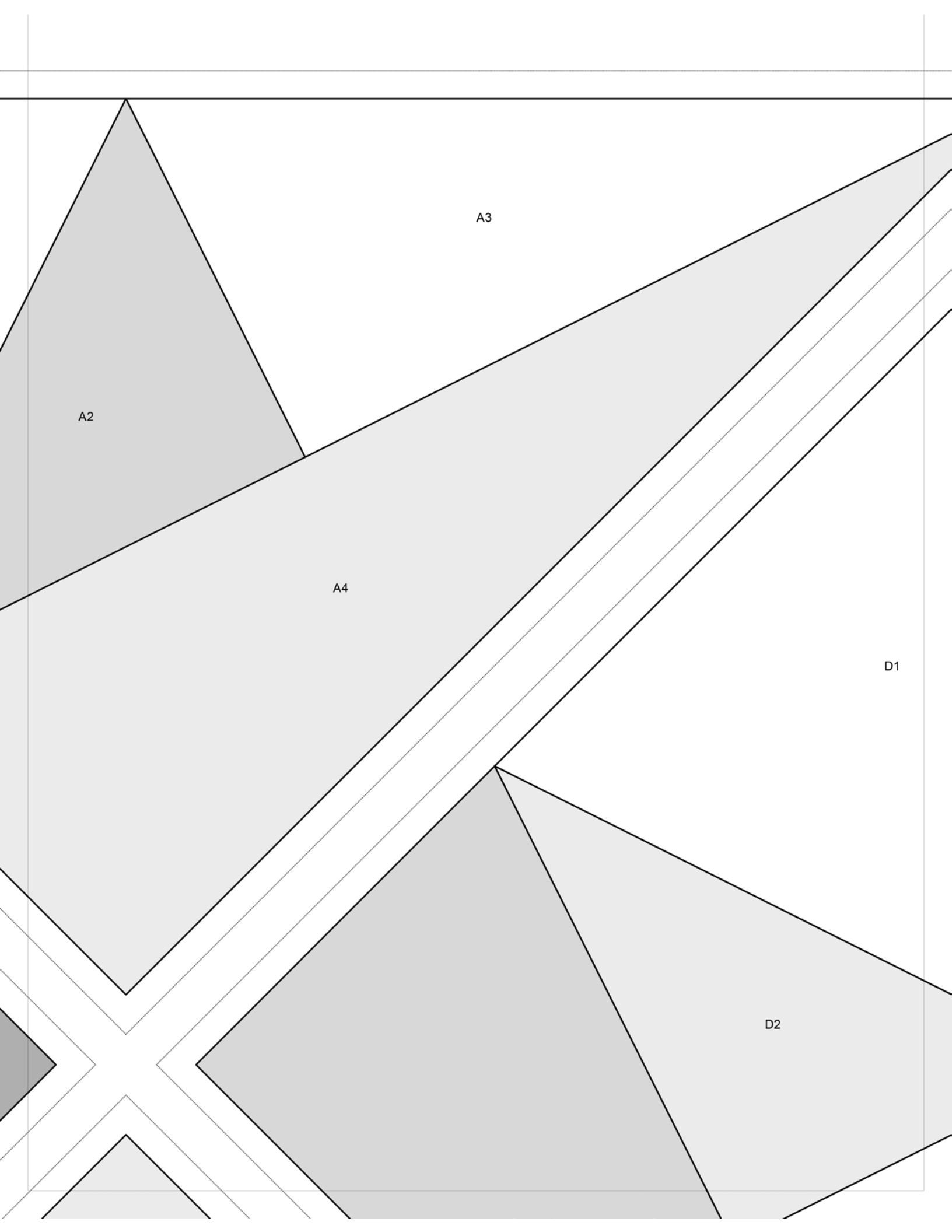


A1

B3

B4

B2



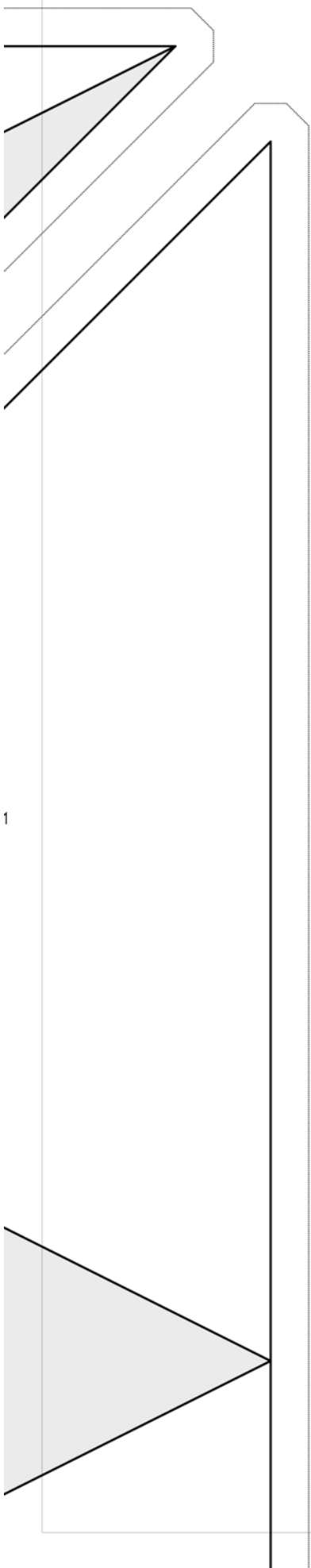
A2

A3

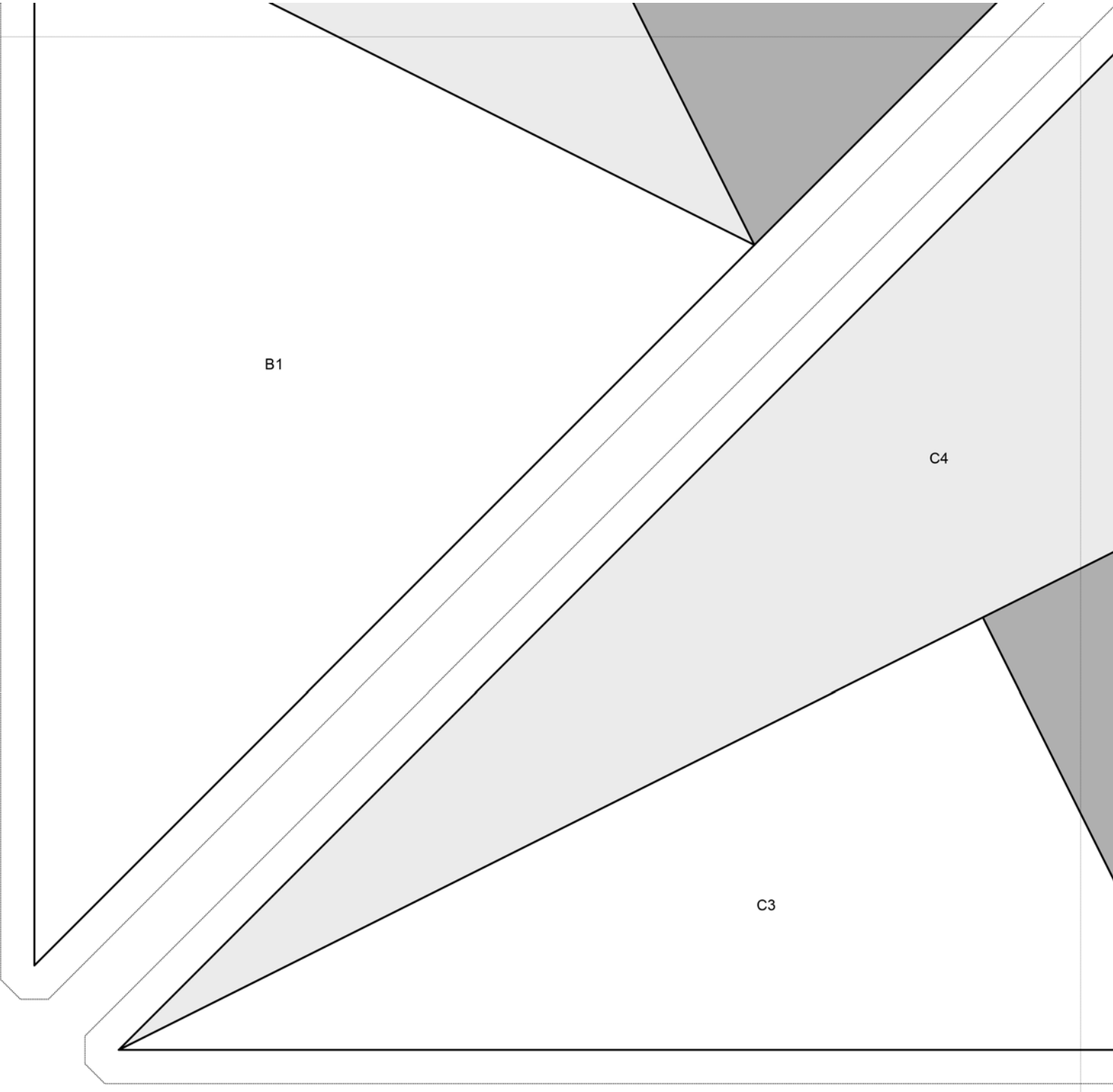
A4

D1

D2



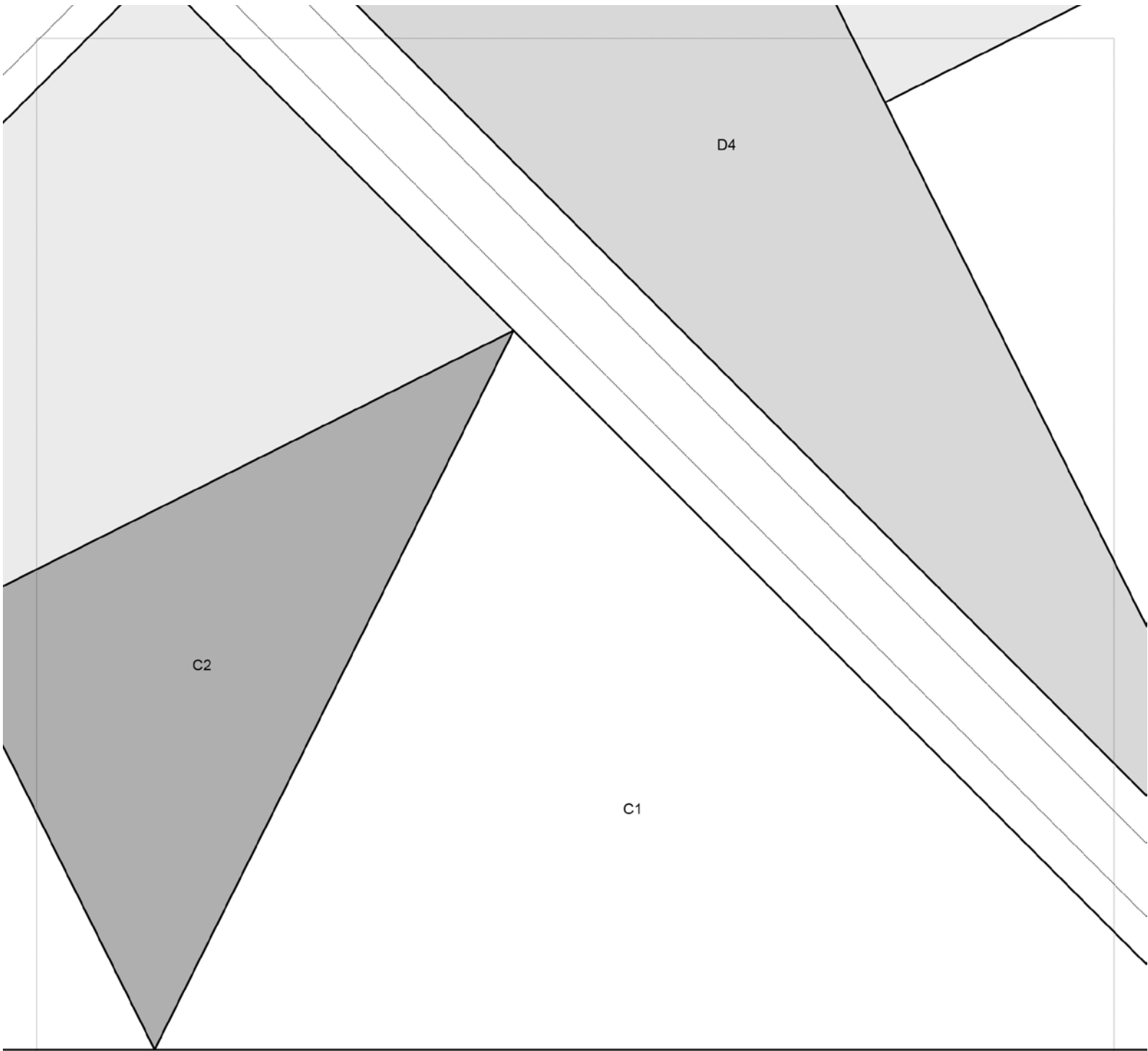
1



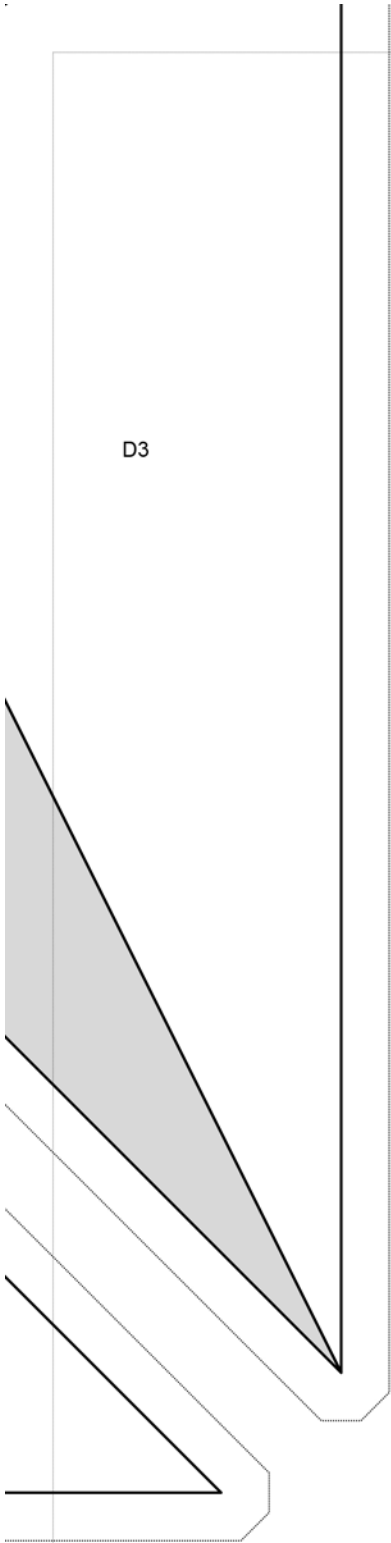
B1

C4

C3



D3



Art Glass

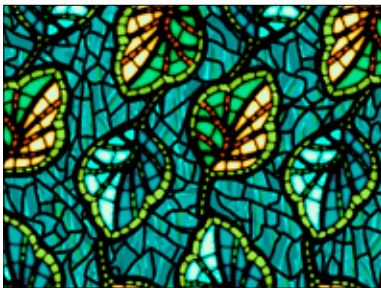
Fabric Collection by **Rose Ann Cook**



ARTG 814 PA Panel shown selvage to selvage • 24" repeat



ARTG 815 MU



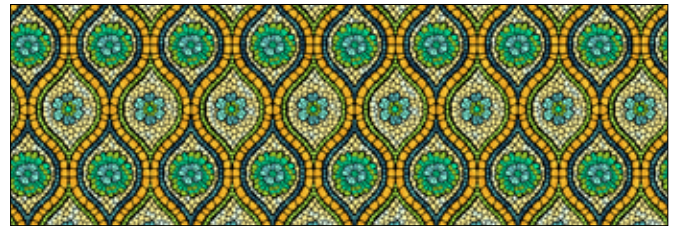
ARTG 816 B



ARTG 816 Y



ARTG 817 B



ARTG 817 Y



ARTG 818 B



ARTG 818 MU



ARTG 819 B



ARTG 819 G



ARTG 820 B



ARTG 820 G



ARTG 820 O



P&B Textiles ♦ www.pbtex.com ♦ 800-351-9087

45-47 Washington St., Pawtucket, RI 02860 ♦ 253 W. 35th St., 11th floor, New York, NY 10001

△ 100% cotton ♦ Cold wash & dry ♦ 43"/44" ♦ Colors may vary due to printing process ♦ Fabrics shown at 25% scale ♦ 2/15