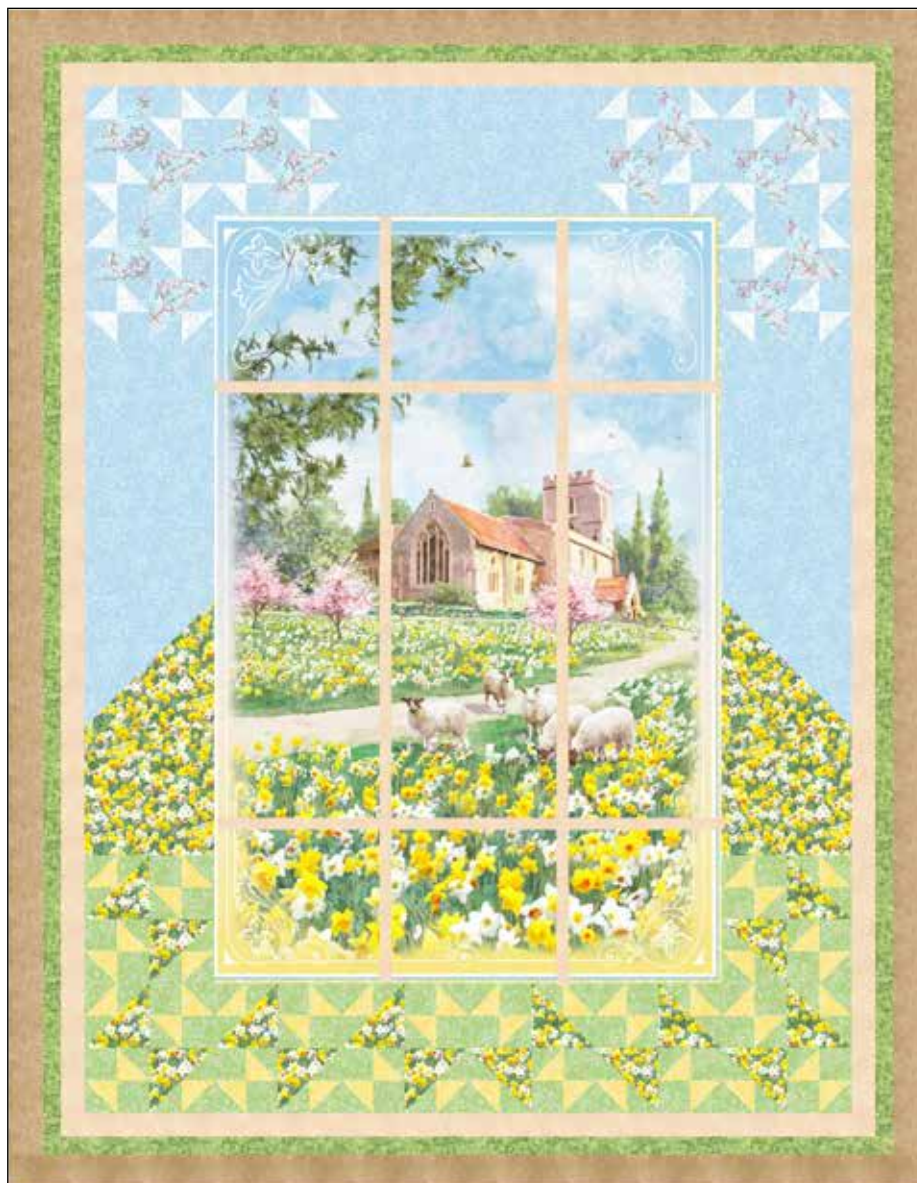


Pattern will be available to download when the fabric ships.

## WEB ONLY

Approximate size: 39" x 50"



## Fields of Faith

by Pip Wilson

### FABRIC REQUIREMENTS\*

FOFA 6072 PA.....	1 panel	FOFA 6076 WB .....	1/8 yard
FOFA 6074 B.....	1/8 yard	FOFA 6076 Y.....	1/8 yard
FOFA 6075 GYW.....	1/2 yard	FOFA 6077 G.....	1/4 yard
FOFA 6076 B.....	1/2 yard	SUED 300 LZ.....	†3/4 yard
FOFA 6076 G.....	1/4 yard	SUES 299 E.....	1/2 yard
		Total yardage.....	3 7/8 yards

Morning Has Broken Quilt design by Cyndi Hershey ©2025

\*These yardages are estimates ONLY and may change on the final pattern.

†Includes yardage for binding.



A Division of Ocean State Innovations  
208 Clock Tower Square, Portsmouth, RI 02871 • 800-351-9087 • [www.pbtex.com](http://www.pbtex.com)

## ***Kit Chart*** *(based on 15 yard bolts)*

Fabric	12	18	24
FOFA 6072 PA*	1	2	2
FOFA 6074 B	1	1	1
FOFA 6075 GYW	1	1	1
FOFA 6076 B	1	1	1
FOFA 6076 G	1	1	1
FOFA 6076 WB	1	1	1
FOFA 6076 Y	1	1	1
FOFA 6077 G	1	1	1
SUED 300 LZ	1	1	2
SUES 299 E	1	1	1

\*10 yards = 15 panels