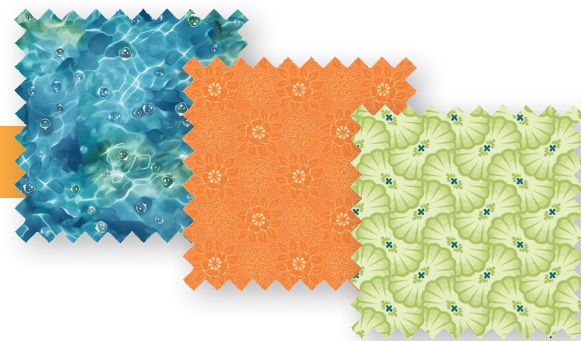


Koi Pond

Playing Koi Quilt designed by Stacey Day



Approximate size: 72" x 72"



*Featuring fabrics from the Koi Pond fabric collection
by Clint Eagar*

P&B Textiles • pbtex.com • p800-351-9087 • 208 Clock Tower Square, Portsmouth, RI 02871



Koi Pond

Fabric collection by Clint Eagar
Playing Koi Quilt designed by Stacey Day
Finished size approximately: 72" x 72"

Yardage:

Fabric A	KPON5632-MU.....	1 1/4 yards
Fabric B	KPON5633-MU.....	1 yard
Fabric C	KPON5634-E.....	1/4 yard
Fabric D	KPON5634-N.....	1/8 yard
Fabric E	KPON5636-BG.....	1/4 yard
Fabric F	KPON5636-DBG.....	1 yard
Fabric G	KPON5637-G.....	1/4 yard
Fabric H	KPON5637-N.....	1 yard
Fabric I	KPON5637-Y.....	1/2 yard
Fabric J	KPON5638-WE.....	1/2 yard
Fabric K	KPON5638-BG.....	1 1/8 yards
Fabric L	KPON5639-EB.....	1 1/8 yards
Fabric M	KPON5639-O.....	5/8 yard
Backing	4 1/2 yards
Batting	80" x 80"

You will also need:

- (8) Copies Foundation 1
- (16) copies Foundation 2
- (32) Copies Foundation 3a and 3b taped together into a single unit
- Spray starch or fabric stiffening spray

Cutting Instructions:

*Please read all instructions carefully before beginning. Strips are cut across the width of fabric **WOF** (perpendicular to selvages) unless otherwise stated. All seams are sewn with 1/4" seam unless otherwise stated. Label all pieces. 42" usable WOF*

Fabric A:

- Cut seven 5 1/2" x WOF strips; sew together end to end and cut two 5 1/2" x 62 1/2" vertical borders and two 5 1/2" x 72 1/2" horizontal borders. **(Borders)**
- Cut one 3 3/4" x WOF strips; sub-cut eight 3 3/4" x 3 3/4" squares. **(Foundation 1)**

Fabric B:

- Cut fourteen 2 1/4" x WOF strips; sub-cut thirty-two 2 1/4" x 7" rectangles and thirty-two 2 1/4" x 9 1/2" rectangles. **(Blocks)**

Fabric C:

- Cut one 3 3/4" x WOF strips; cut eight 3 3/4" x 3 3/4" squares. **(Blocks)**

Fabric D:

- Cut one 2 1/4" x WOF strip; sub-cut eight 2 1/4" x 4 3/4" rectangles. **(Blocks)**

Fabric E:

- Cut two 3 1/4" x WOF strips; sub-cut sixteen 3 1/4" squares. Cut each square across one diagonal into thirty-two 3 1/4" triangles. **(Blocks)**

Fabric F:

- Cut three 5 3/4" x WOF strips; sub-cut sixteen 5 3/4" squares. Cut each square across one diagonal into thirty-two 5 3/4" triangles. **(Blocks)**
- Cut three 3 1/2" x WOF strips; sub-cut thirty-two 3 1/2" squares. Cut each square across both diagonals into (128) triangles. **(Blocks)**

Fabric G:

- Cut two 3 1/4" x WOF strips; sub-cut twenty 3 1/4" squares. Cut each square across one diagonal into forty triangles. **(Blocks)**

Fabric H:

- Cut eight 2 1/4" x WOF strips; sew together end to end and set aside. **(Binding)**
- Cut seven 1 1/2" x WOF strips; sew together end to end and cut two 1 1/2" x 60 1/2" vertical borders and two 1 1/2" x 62 1/2" horizontal borders. **(Borders)**

Fabric I:

- Cut six 2 1/4" x WOF strips; sub-cut thirty-two 2 1/4" x 4 3/4" rectangles and eight 2 1/4" x 7" rectangles. **(Blocks)**

Fabric J:

- Cut five 2 1/4" x WOF strips; sub-cut eight 2 1/4" x 9 1/2" rectangles and eight 2 1/4" x 12" rectangles. **(Blocks)**

Fabric K:

- Cut one 3 1/4" x WOF strips; sub-cut twelve 3 1/4" squares. Cut each square across one diagonal into twenty-four 3 1/4" triangles. **(Blocks)**
- Cut fourteen 2 1/4" x WOF strips; sub-cut twenty-four 2 1/4" x 9 1/2" rectangles and twenty-four 2 1/4" x 12" rectangles. **(Blocks)**

Fabric L:

- Cut one 19" x WOF strip; sub-cut two 19" squares. Cut each square across one diagonal into four 19" triangles. (**Setting Triangles**)
- Cut two 14 1/2" x WOF strips; Sub-cut four 14 1/2" squares. Cut each square across both diagonals into sixteen 14 1/2" triangles. (**Setting Triangles**)

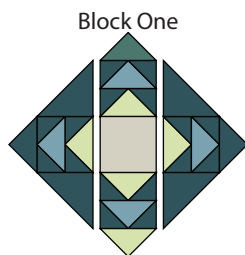
Fabric M:

- Cut eight 2 1/4" x WOF strips; sub-cut twenty-four 2 1/4" x 4 3/4" rectangles and twenty-four 2 1/4" x 7" rectangles. (**Blocks**)

Piecing Instructions:

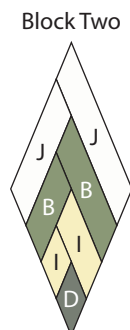
Note: Pay attention to the unit orientations while assembling the various components.

1. Using your favorite method, paper piece eight Foundation 1 and sixteen Foundation 2 pieces using the fabrics and sizes listed on the foundation templates. Trim on the outside solid line.
2. Sew together two Foundation 2 and one Foundation 1 pieces as shown. (Diagram 1) Remove all the papers, press flat to make one 8 3/4" Block One square. Repeat to make eight Block One squares.



Make (8) = 8 3/4" x 8 3/4" unfinished
Diagram 1

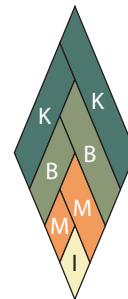
3. Paper piece eight Foundation 3 pieces using the fabrics listed in the diagram below, in the sizes on the foundation. (Diagram 2) Trim around the outside solid lines. Use a light fabric stiffening spray on the fabric, then carefully remove the papers. Treat with spray again to prevent stretching to make eight Block Two pieces.



Make (8)
Diagram 2

4. Paper piece twenty-four Foundation 3 pieces using the fabrics listed in the diagram below, in the sizes on the foundation. (Diagram 3) Trim around the outside solid lines. Use a light fabric stiffening spray on the fabric, then carefully remove the papers. Treat with spray again to prevent stretching to make twenty-four Block Three pieces.

Block Three



Make (24)
Diagram 3

5. Mark the seam allowance in the corner of each Block One, Block Two and Block Three.
6. Sew together the eight Block Two pieces as shown. (Diagram 4)

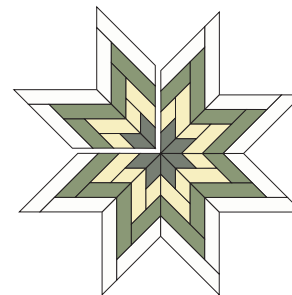


Diagram 4

7. Using a Y-seam technique, sew the eight Block One squares the thee Block two pieces. (Diagram 5)

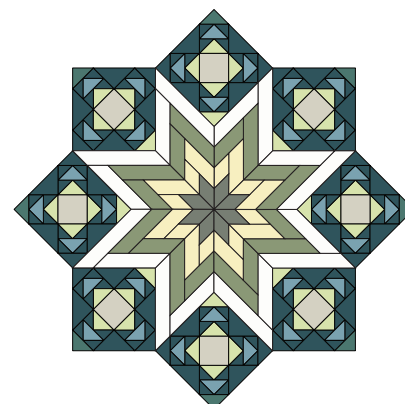


Diagram 5

8. Sew the twenty-four Block Three pieces together into groups as shown. Using a Y-seam technique, sew the Block Three groups to the Block One and Block Two pieces. (Diagram 6)

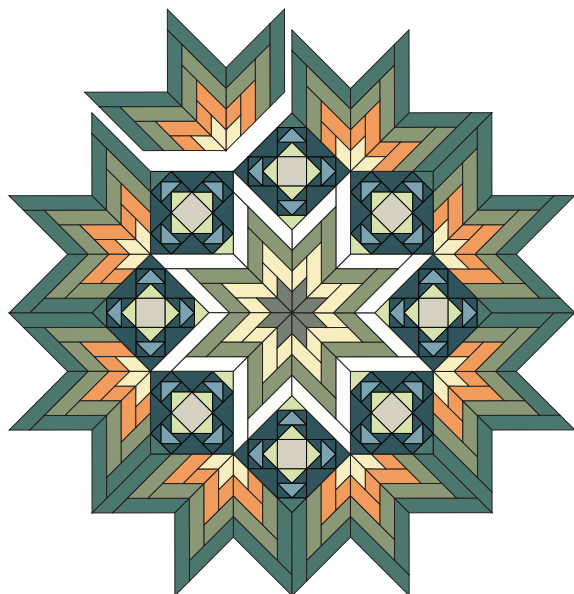


Diagram 6

9. Using a Y-seam technique, sew the 14 1/2" Fabric L triangles to the Block Three pieces as shown. (Diagram 7)

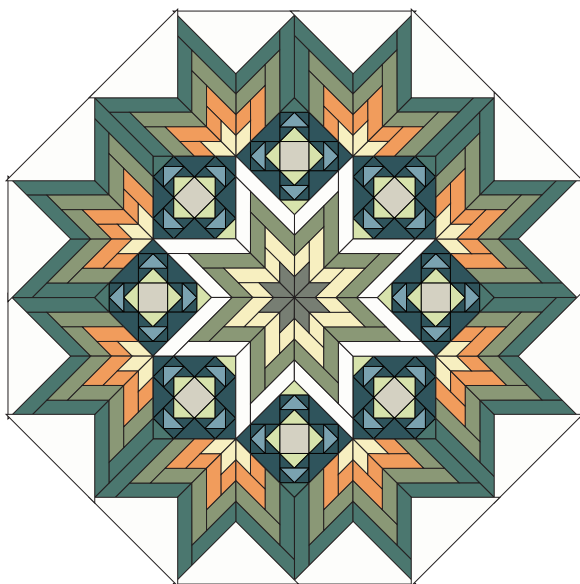
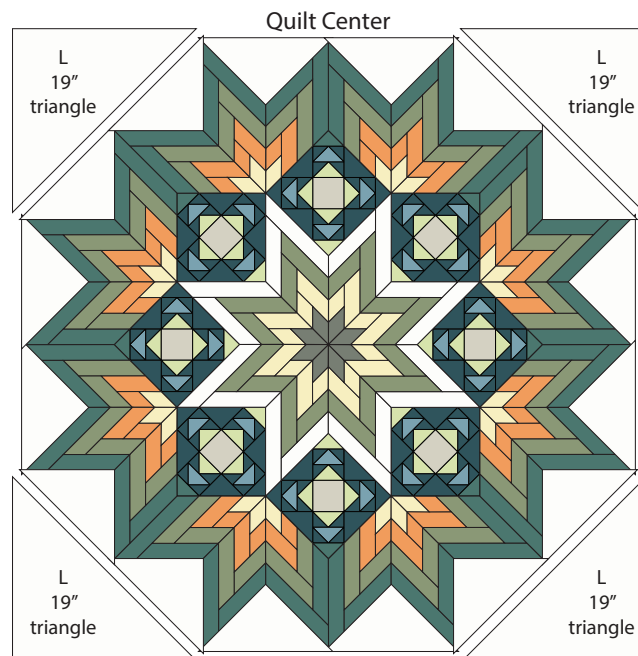


Diagram 7

10. Sew the 19" Fabric L triangles to the corners as shown to make the quilt center. (Diagram 8) Trim and square the quilt center to measure 60 1/2" x 60 1/2".



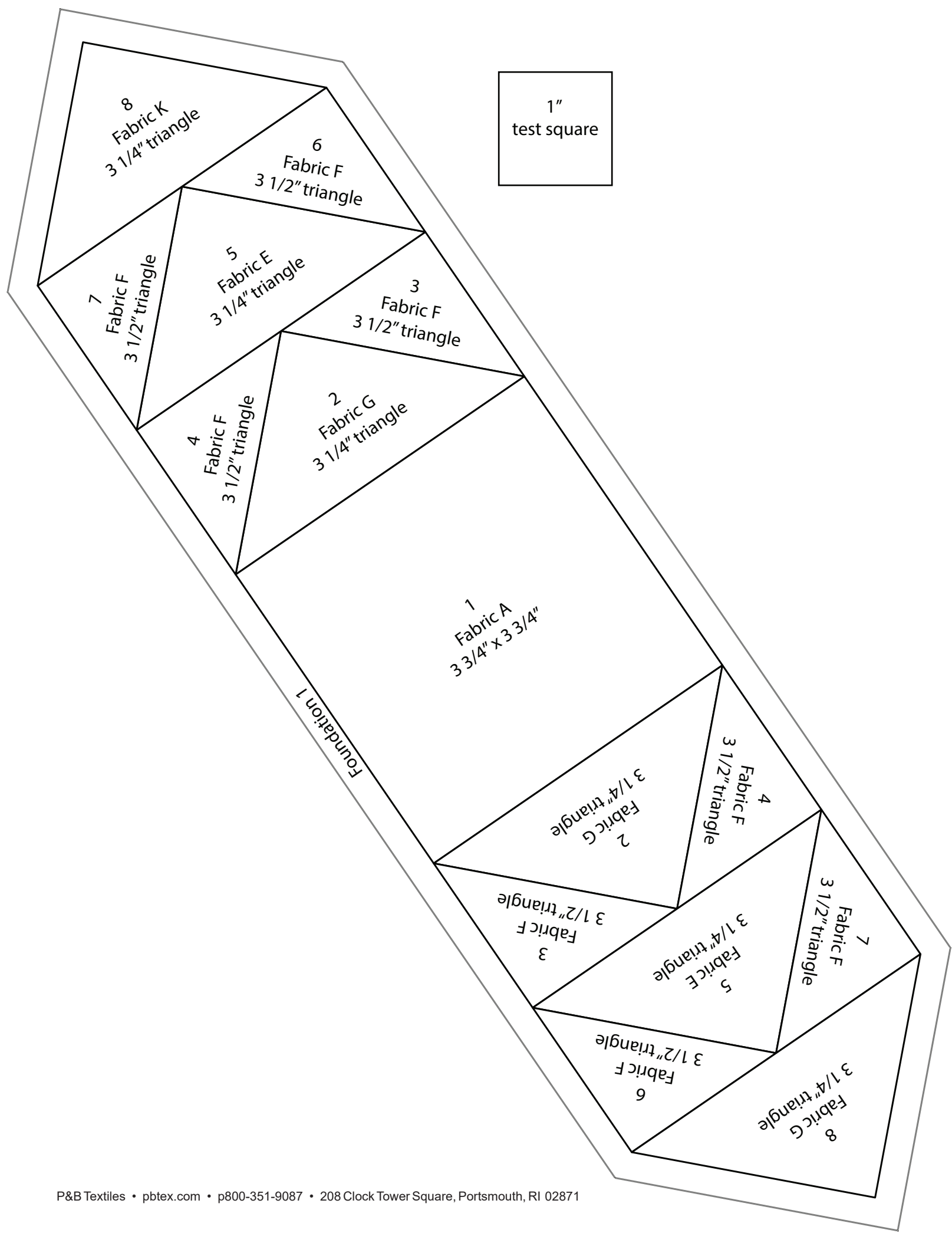
Trim quilt center = 60 1/2" x 60 1/2" unfinished
Diagram 8

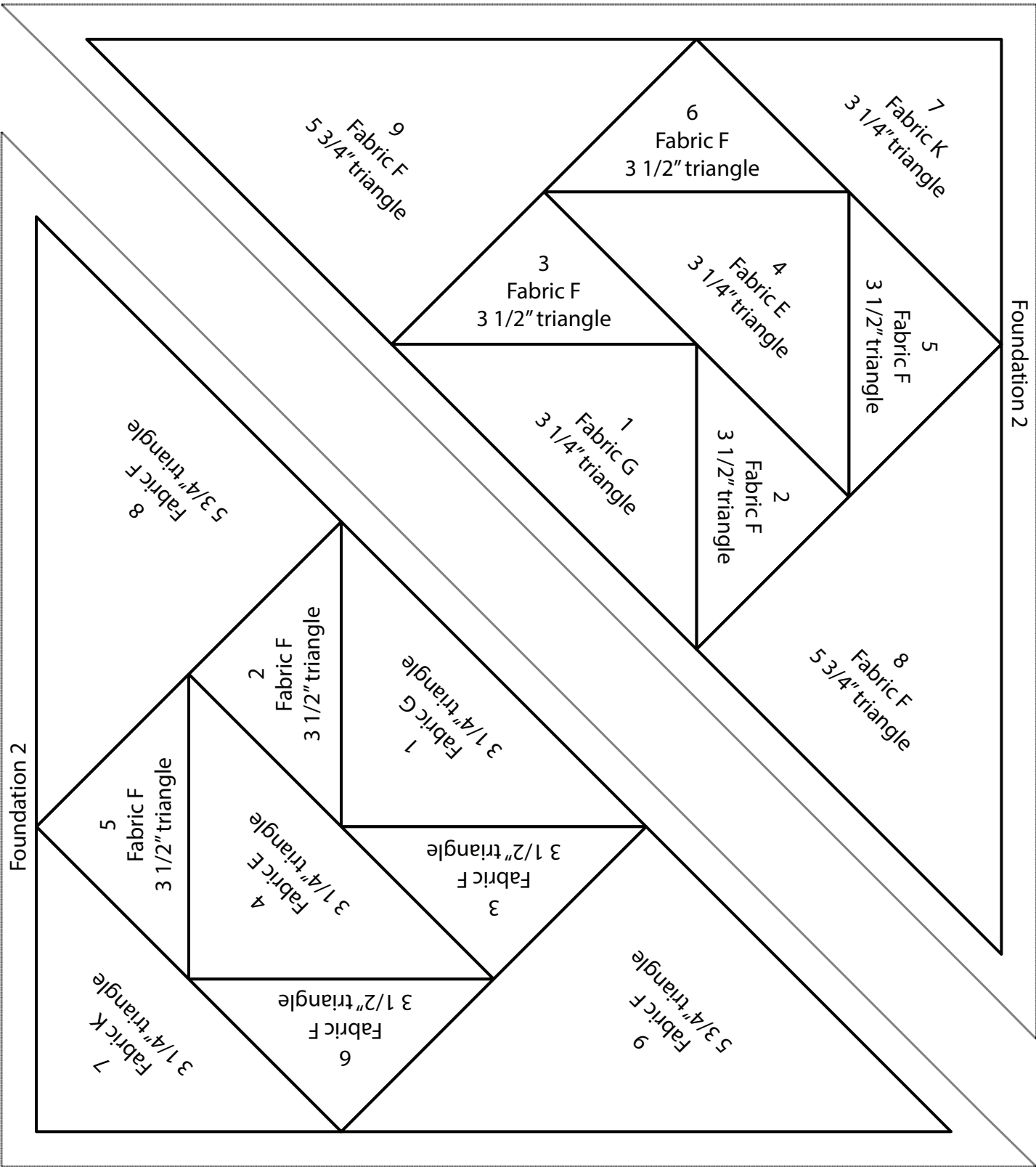
Quilt Assembly:

11. Sew one 1 1/2" x 60 1/2" Fabric H vertical border to each side of the quilt center. Sew one 1 1/2" x 62 1/2" Fabric H horizontal border to the top and bottom of the quilt center.
12. Sew one 5 1/2" x 62 1/2" Fabric A vertical border to each side of the quilt center. Sew one 5 1/2" x 72 1/2" Fabric A horizontal border to the top and bottom of the quilt center.

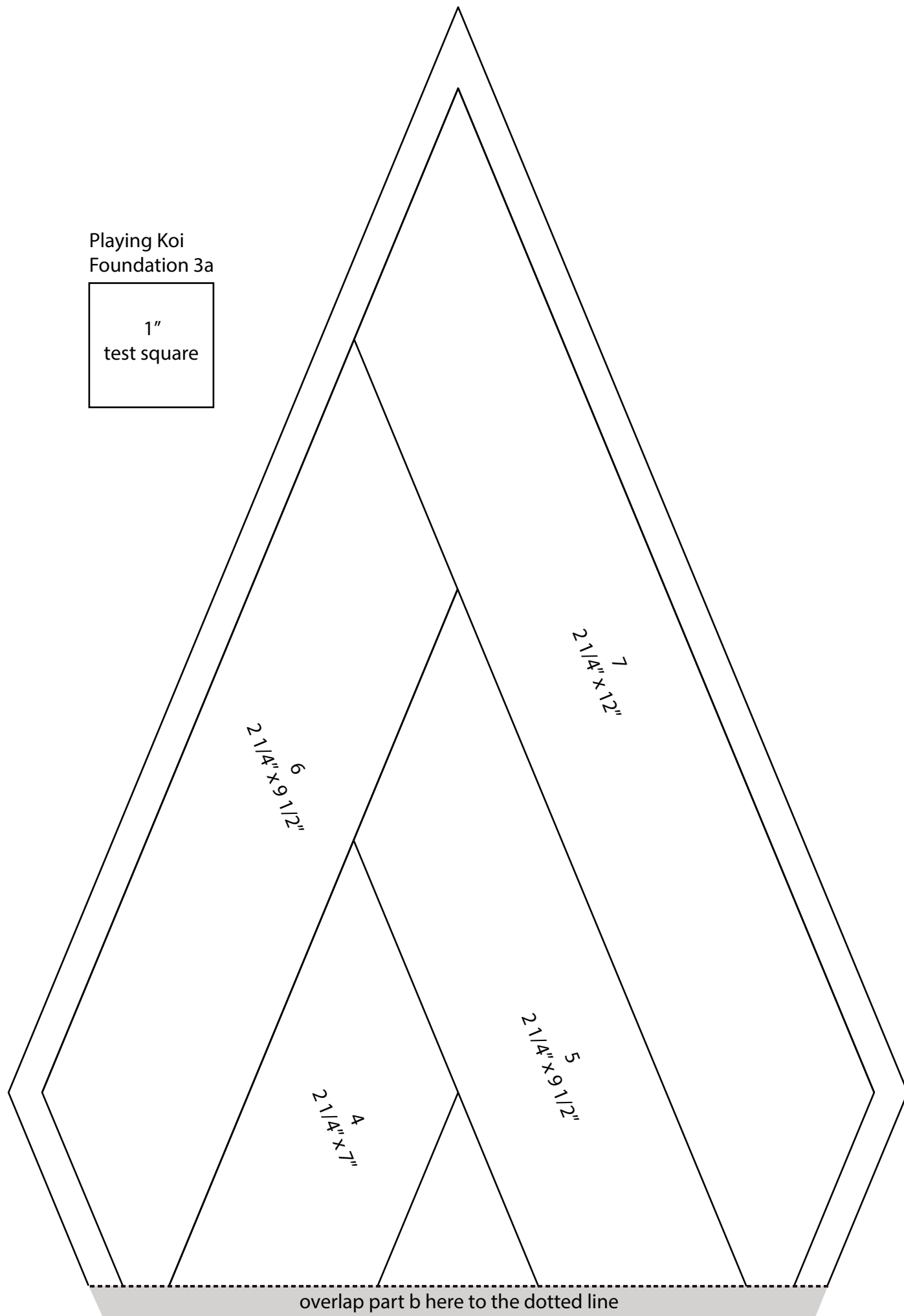
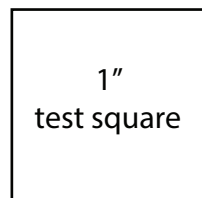
Finishing:

13. Prepare backing using two widths of fabric with a horizontal seam. Press seam open. Trim to 80" x 80".
14. Layer the quilt, batting and backing. Baste layers together.
15. Quilt as desired.
16. Trim layers even with quilt top, squaring corners.
17. Attach 2 1/4" **Fabric H** binding strips using your favorite method.

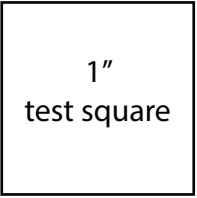




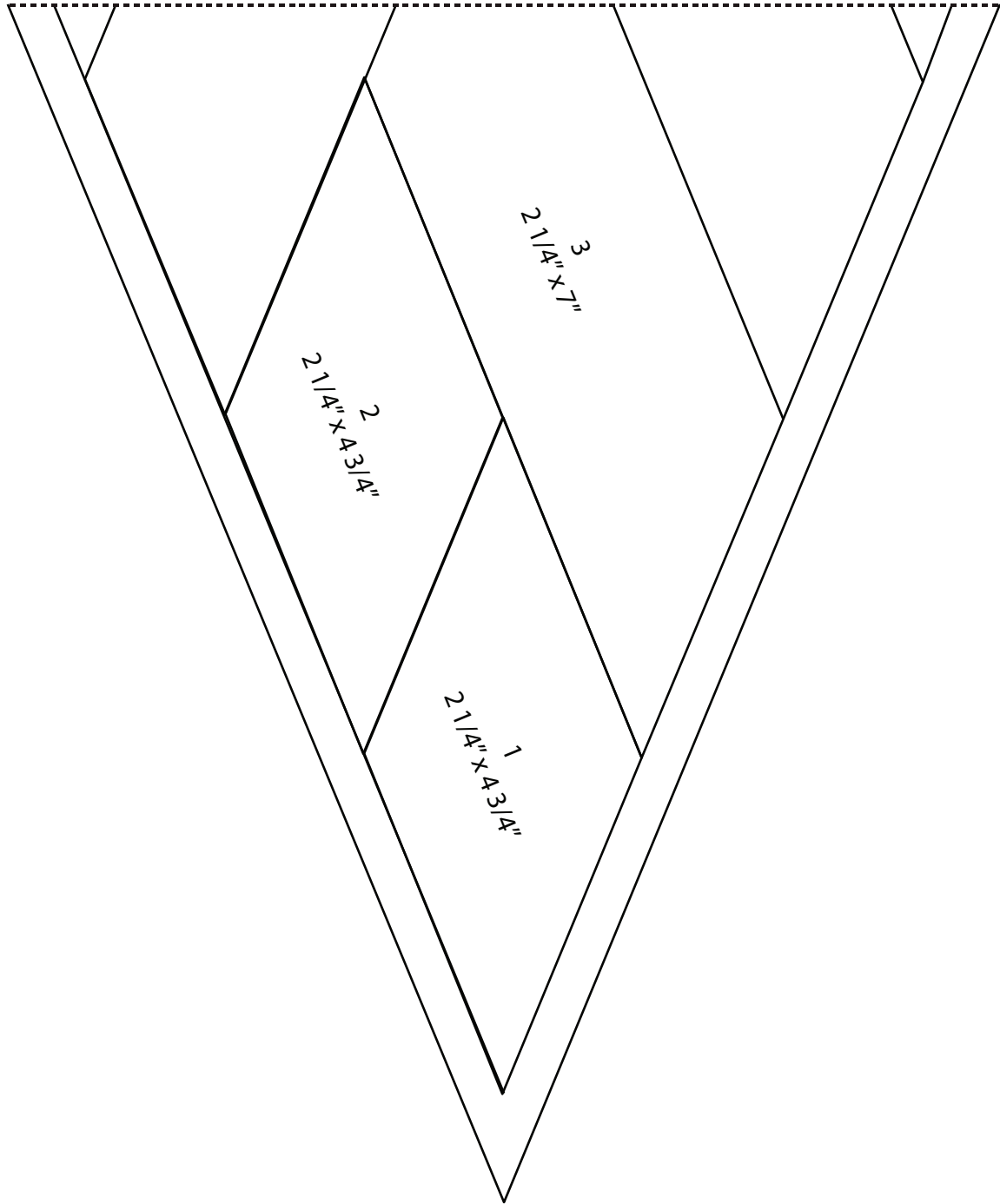
Playing Koi
Foundation 3a



Playing Koi
Foundation 3b



overlap the shaded area of part 3a to the dotted line



Koi Pond

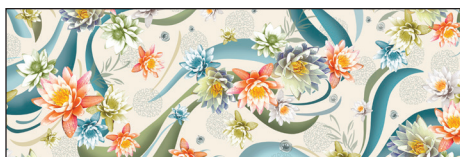
Fabric Collection by
Clint Eagar



5632-MU
Fabric A



5633-MU
Fabric B



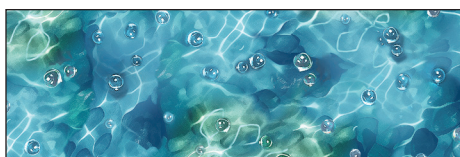
5634-E
Fabric C



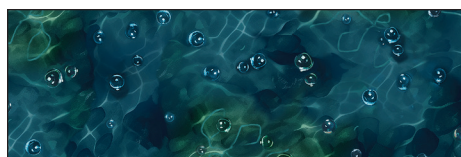
5634-N
Fabric D



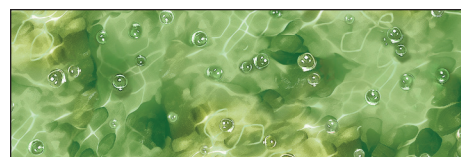
3635-MU



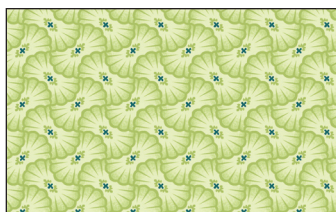
5636-BG
Fabric E



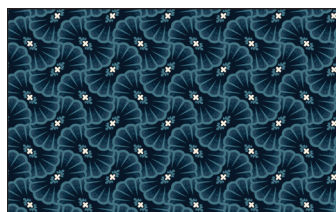
5636-DBG
Fabric F



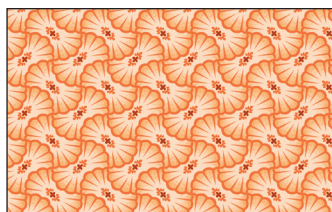
3636-G



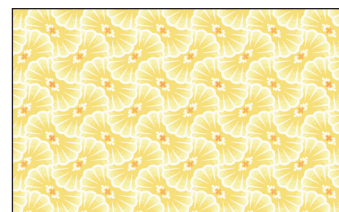
5637-G
Fabric G



5637-N
*Fabric H**



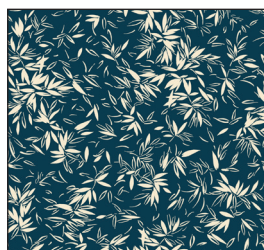
5637-O



5637-Y
Fabric I



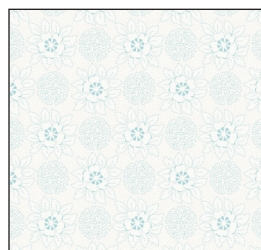
5638-BG
Fabric K



5638-N



5638-WE
Fabric J



5639-EB
Fabric L



5639-O
Fabric M

Quilt Fabrics in Bold

* Binding

† Backing

P&B Textiles • pbtex.com • p800-351-9087 • 208 Clock Tower Square, Portsmouth, RI 02871

