

# Christmas Miniatures

Quilt Design by Cyndi Hershey



Quilt size: approximately 52" x 64"

Featuring fabrics from  
Christmas Miniatures by Pink Light Studio  
for P&B Textiles



P&B Textiles • pbtex.com • 800-351-9087 • 208 Clock Tower Square, Portsmouth, RI 02871

# Christmas Miniatures

Fabric collection by Pink Light Studio for P&B Textiles

Quilt design by Cyndi Hershey

Skill level: Advanced Beginner • Finished Quilt Size: approximately 52" x 64"

## Quilt Yardages:

Fabric A: <b>One 10" square package</b> .....	42 pieces
Fabric B: <b>CHMI 4461 G</b> .....	5/8 yard
Fabric C: <b>CHMI 4463-MU</b> .....	3/8 yard
Fabric D: <b>WHIM 4405 R</b> .....	Fat Eighth
Fabric E: <b>WHIM 4406 G</b> .....	Fat Eighth
Fabric F: <b>WHIM 4407 DR</b> .....	Fat Eighth
Fabric G: <b>WHIM 4408 G</b> .....	Fat Eighth
Fabric H: <b>WHIM 4410 G</b> .....	Fat Eighth
Fabric I: <b>WHIM 4413 Y</b> .....	3/4 yard
Fabric J: <b>WHIM 4415 R</b> .....	Fat Eighth
Fabric K: <b>WHIM 4415 S</b> .....	Fat Eighth
Fabric L: <b>RAM9 743 W</b> .....	3 1/8 yards
Backing: <b>CHMI 4456 MU suggested</b> .....	3 1/2 yards
Batting.....	60" x 72"

## Cutting Instructions:

Please read all instructions carefully before beginning. Strips are cut across the width of fabric (perpendicular to selvages) unless otherwise stated. All seams are sewn with a 1/4" seam unless otherwise stated. Label all pieces.

### From Fabric A:

1. Use a variety of 10" squares to cut thirty 6 1/2" squares. (Ornament Blocks)

### From Fabric B:

1. Cut seven 2 1/2" strips. (Binding)

### From Fabric C:

1. Cut six 1 1/2" strips. Sew strips together end to end with diagonal seams. Trim seams and press open. From this pieced strip, cut two 1 1/2" x 48 1/2" strips and two 1 1/2" x 60 1/2" strips. (Middle Border)

### From Fabric D:

1. Cut three 5 1/4" squares. Cut each square diagonally in both directions to yield twelve quarter-square triangles. You will only use ten triangles. (Bow Blocks)
2. Cut four 1 1/2" squares. (Border Cornerstones)

### From Fabric E:

1. Cut three 5 1/4" squares. Cut each square diagonally in both directions to yield twelve quarter-square triangles. You will only use ten triangles. (Bow Blocks)

### From Fabric F:

1. Cut three 5 1/4" squares. Cut each square diagonally in both directions to yield twelve quarter-square triangles. You will only use ten triangles. (Bow Blocks)

### From Fabric G:

1. Cut three 5 1/4" squares. Cut each square diagonally in both directions to yield twelve quarter-square triangles. You will only use ten triangles. (Bow Blocks)
2. Cut four 1 1/2" squares. (Border Cornerstones)

### From Fabric H:

1. Cut three 5 1/4" squares. Cut each square diagonally in both directions to yield twelve quarter-square triangles. You will only use ten triangles. (Bow Blocks)

### From Fabric I:

1. Cut seven 1 1/2" strips; subcut one hundred sixty-four 1 1/2" squares. (Sashing & Border Cornerstones)
2. Cut two 2 1/2" strips; subcut twenty 2 1/2" squares. (Sashing)

### From Fabric J:

1. Cut three 5 1/4" squares. Cut each square diagonally in both directions to yield twelve quarter-square triangles. You will only use ten triangles. (Bow Blocks)

### From Fabric K:

1. Cut thirty 1" x 2 3/4" rectangles. (Bow Blocks)

### From Fabric L:

1. Cut eleven 1 1/2" strips. Sew strips together end to end with diagonal seams. Trim seams and press open. From this pieced strip, cut two 1 1/2" x 46 1/2" strips, two 1 1/2" x 50 1/2" strips, two 1 1/2" x 58 1/2" strips and two 1 1/2" x 62 1/2" strips. (Inner & Outer Borders)
2. Cut eight 2 1/2" strips; subcut one hundred twenty 2 1/2" squares. (Ornament Blocks)
3. Cut two 2 5/8" strips; subcut thirty 2 5/8" squares. Cut each square diagonally in half to yield sixty half-square triangles. (Bow Blocks)
4. Cut three 4 1/2" strips; subcut sixty 1 1/2" x 4 1/2" rectangles. (Bow Blocks)
5. Cut two 5 1/4" strips; subcut eight 5 1/4" squares. Cut each square diagonally in both directions to yield thirty-two quarter-square triangles. You will only use thirty triangles. (Bow Blocks)
6. Cut two 6 1/2" strips; subcut twenty-four 2 1/2" x 6 1/2" rectangles. (Sashing)
7. Cut two 10 1/2" strips; subcut twenty-five 2 1/2" x 10 1/2" rectangles. (Sashing)

## Piecing Instructions:

### Ornament Blocks

1. Draw a diagonal line on the back side of each 2 1/2" L square. With right sides together, place one marked square on one corner of one 6 1/2" A square. Sew on the line. Trim seam and press toward the resulting triangle. Repeat for remaining corners of the A square. Repeat to make thirty blocks (Figure 1).



Figure 1  
Make 30.

### Bow Blocks

1. Sew one 2 5/8" L half-square triangle to both long sides of one 1" x 2 3/4" K rectangle. Keep bottom edges of triangles even with bottom of rectangle. The top of the rectangle will extend at the top. Press toward the triangles. Align edge of ruler with the diagonal edge of one triangle and cut to trim top of rectangle. Repeat for other side of unit. Repeat to make thirty units. **Note:** to help with alignment, you may find it helpful to mark a short, vertical center line through the top of the K rectangle prior to cutting (Figure 2).
2. Sew one unit from Step 1 with two matching 5 1/4" triangles and one 5 1/4" L triangle. Press seams open or to one side. Repeat to make thirty "bow" units (Figure 3).

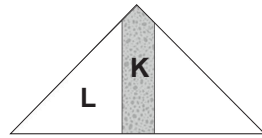


Figure 2 Make 30.  
Bottom measures 5 1/4" unfinished.

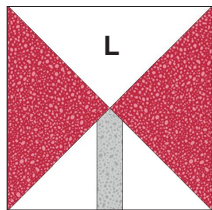


Figure 3 Make 30.  
4 1/2" square unfinished,

3. Sew one 1 1/2" x 4 1/2" L rectangle to both sides of each bow unit from Step 2. Press seams open or to one side. Repeat to make thirty bow blocks (Figure 4).

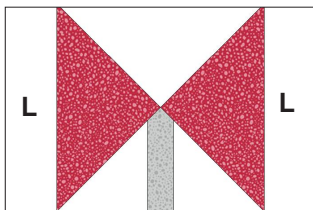


Figure 4 Make 30.  
4 1/2" x 6 1/2" unfinished.

4. Sew one bow block together with one ornament block as you prefer. You may want to lay out all of the units prior to sewing together. Press seam open or to one side (Figure 5).

Figure 5 Make 30.  
6 1/2" x 10 1/2" unfinished.



### Sashing

1. Draw a diagonal line on the back side of each 1 1/2" I square. With right sides together, place one marked square on a corner of one 2 1/2" x 6 1/2" L rectangle. Sew on the line. Trim seam and press toward the resulting triangle. Repeat with a second marked square on the adjacent corner at the same end of the rectangle. Repeat to make eight sashing (A) units (Figure 6).



Figure 6 Make 8.  
2 1/2" x 6 1/2" unfinished.

2. Repeat Step 1 with 2 1/2" x 10 1/2" L rectangles. Make 10 sashing units.
3. Repeat process in Step 1 except sew I triangles to all corners of one 2 1/2" x 6 1/2" L rectangle. Repeat to make sixteen sashing (B) units (Figure 7).



Figure 7 Make 16.  
2 1/2" x 6 1/2" unfinished.

4. Repeat Step 3 with the 2 1/2" x 10 1/2" L rectangles. Make 15 sashing units.
5. Refer to quilt diagram to lay sashing units together with 2 1/2" I squares into horizontal sashing rows. Press seams open or toward the I squares. Make four horizontal sashing rows.
6. Refer to quilt image to lay out blocks and vertical sashing units into rows. Sew together. Press seams open or toward the blocks. Sew five block/sashing rows.
7. Sew block rows and horizontal sashing rows together. Press seams open or to one side.
8. Sew one 1 1/2" x 58 1/2" L strip to both sides of the quilt center. Press toward the strips. Sew one 1 1/2" G square to both ends of both 1 1/2" x 46 1/2" L strips. Press toward the strips. Sew these strips to the top and bottom of the quilt center.
9. Sew one 1 1/2" x 60 1/2" C strip to both sides of the quilt. Press toward the strips. Sew one 1 1/2" I square to both ends of both 1 1/2" x 48 1/2" C strips. Press toward the strips. Sew these strips to the top and bottom of the quilt.
10. Sew one 1 1/2" x 62 1/2" L strip to both sides of the quilt. Press toward the strips. Sew one 1 1/2" D square to both ends of both 1 1/2" x 50 1/2" L strips. Press toward the strips. Sew these strips to the top and bottom of the quilt.

### Finishing:

1. Prepare backing with one seam to measure 60" x 72". Press seam open.
2. Layer quilt top, batting, and backing. Baste layers together.
3. Quilt as desired.
4. Trim layers even with quilt top squaring corners.
5. Join 2 1/2" B binding strips with diagonal seams. Press seams open. Press strip in half lengthwise with wrong sides together to make double-fold binding. Attach binding to quilt using your favorite method.
6. Make a label and sew to the back of the quilt.



*Quilt Diagram*

# Christmas Miniatures

Fabric collection by  
Pink Light Studio  
for P&B Textiles



CHMI 4456 DR\*



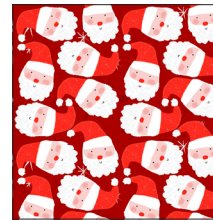
CHMI 4456 G\*



CHMI 4456 MU\*†



CHMI 4457 G\*



CHMI 4457 R\*



CHMI 4458 G\*



CHMI 4458 MU\*



CHMI 4458 R\*



CHMI 4459 MU\*



CHMI 4459 R\*



CHMI 4460 DR\*



CHMI 4460 G\*



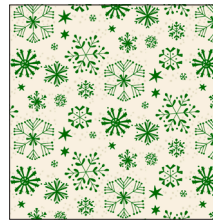
CHMI 4460 GG\*



CHMI 4461 DR\*



CHMI 4461 G\*



CHMI 4461 LG\*



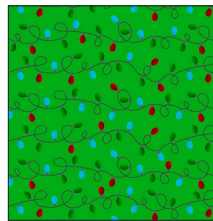
CHMI 4461 LR\*



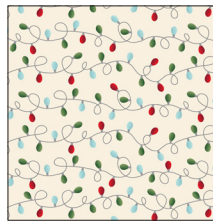
CHMI 4461 R\*



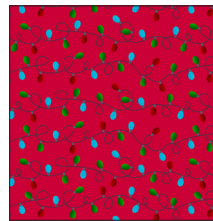
CHMI 4462 MU\*



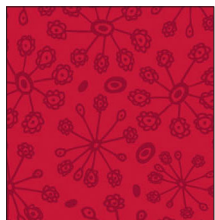
CHMI 4463 G\*



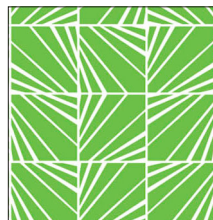
CHMI 4463 MU\*



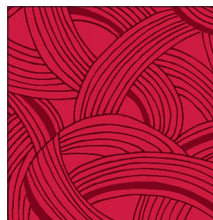
CHMI 4463 R\*



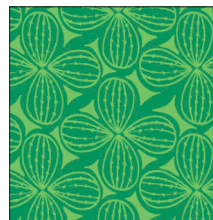
WHIM 4405 R\*



WHIM 4406 G\*



WHIM 4407 DR\*



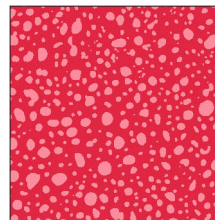
WHIM 4408 G\*



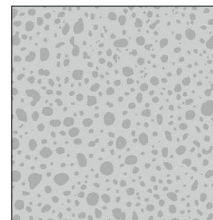
WHIM 4410 G\*



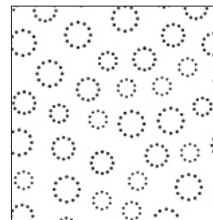
WHIM 4413 Y\*



WHIM 4415 R\*



WHIM 4415 S\*



RAM9 &\$# W\*

