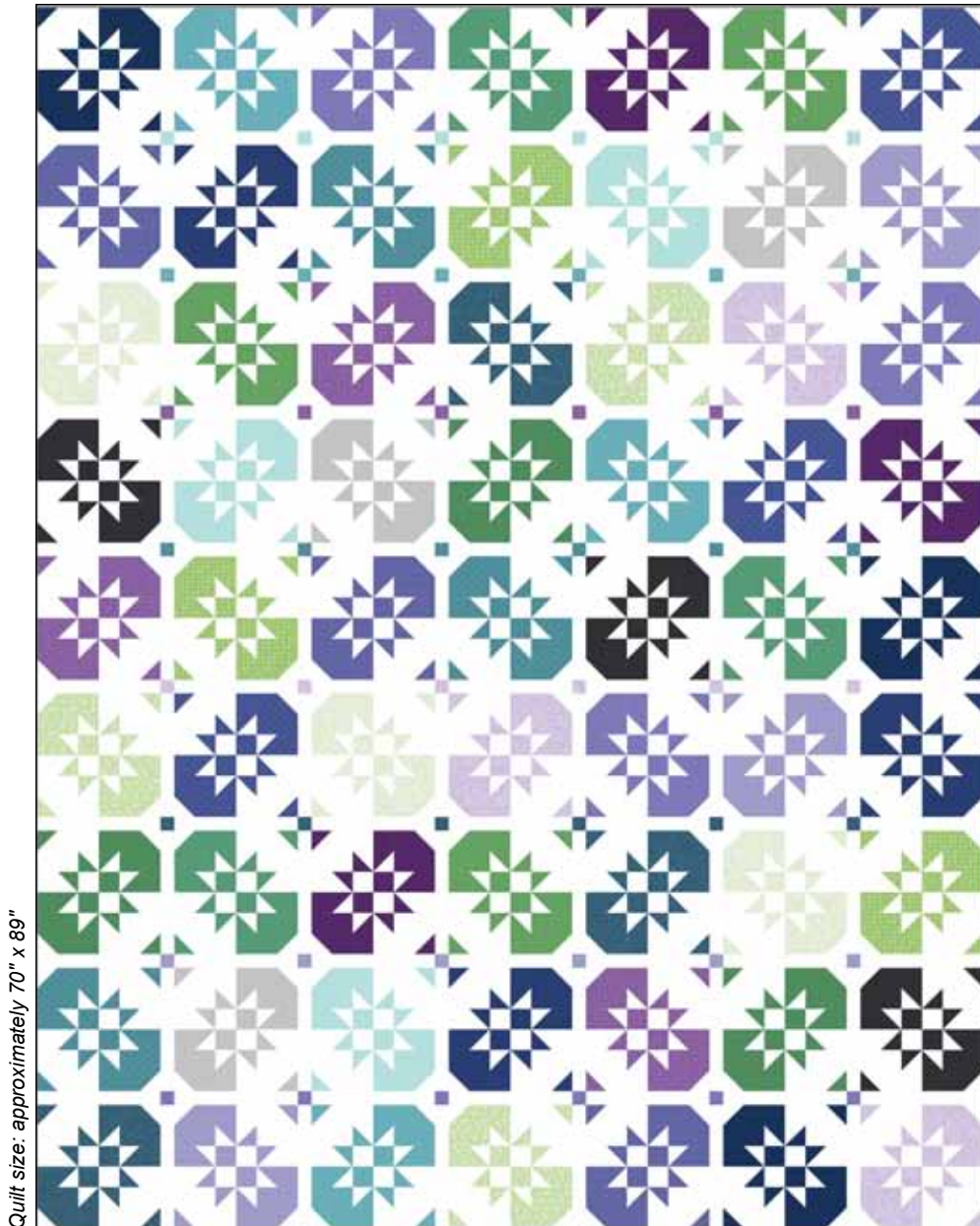
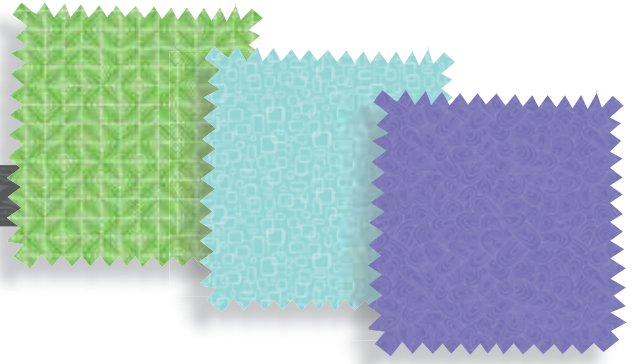


Whimsy

Twinkling Quilt Design by Wendy Sheppard



Quilt size: approximately 70" x 89"

*Featuring fabrics from
Whimsy by Heather Dutton
of Hang Tight Studio for P&B Textiles*



P&B Textiles • pbtex.com • 800-351-9087 • 208 Clock Tower Square, Portsmouth, RI 02871

Whimsy

Fabric collection by Heather Dutton of Hang Tight Studio for P&B Textiles

Twinkling Quilt designed by Wendy Sheppard

Skill level: Advanced Beginner • Finished Quilt Size: approximately 70" x 89" • Finished Block Size: approximately 9" x 9"

Yardages:

Fabric A: **RAM9 743 W**5 1/2 yards

One Cool Fat Quarter Bundle (25 skus)

Backing: **Whimsy fabric of choice**5 5/8 yards

Batting:80" x 99"

Cutting Instructions:

Please read all instructions carefully before beginning. Strips are cut across the width of fabric (perpendicular to selvages) unless otherwise stated. All seams are sewn with a 1/4" seam unless otherwise stated. Label all pieces.

From Fabric A:

1. Cut twenty-six 2" strips. Subcut (504) 2" squares. (Pieced Blocks)

2. Cut twenty-five 3 1/2" strips. Subcut (126) 3 1/2" squares and (252) 2" x 3 1/2" rectangles. (Pieced Blocks)

3. Cut five 9 1/2" strips. Subcut (110) 1 1/2" x 9 1/2" rectangles. (Sashing Rectangles)

From Cool Fat Quarter Bundle: (25 skus used)

From twenty-one fat quarters of choice cut:

1. Cut three 2" x 21" strips. Subcut twenty-four 2" squares. (Pieced Block)

2. Cut three 3 1/2" x 21" strips. Subcut six 3 1/2" x 3 1/2" squares and twelve 2" x 3 1/2" rectangles. (Pieced Block)

3. From leftover fabrics after cutting for pieced blocks, select from eight fabrics, and cut eight sets of six 1 1/2" squares. (Cornerstones)

From remaining four fat quarters:

4. Cut eighteen 2 1/2" x 21" strips. (Binding)

Piecing Instructions:

Pieced Block (9" finished)

1. Draw a diagonal line on the wrong side of one 2" print square. Place square, right sides together, at a corner of one 2" x 3 1/2" A rectangle. Sew on drawn line. Trim 1/4" away from sewn line.



Figure 1

Open and press to reveal print corner triangle (Figure 1).

2. Sew unit to the left of one 2" A square to make a row unit. (Figure 2).

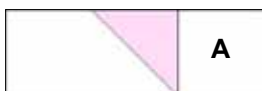


Figure 2

3. Draw a diagonal line on the wrong side of one 2" print square. Place square, right sides together, at a corner of one 2" x 3 1/2" A rectangle. Sew on drawn line. Trim 1/4" away from sewn line. Open and press to reveal print corner triangle (Figure 3).



Figure 3

4. Draw a diagonal line on the wrong side of one 2" print square. Place square, right sides together, at a corner of one 3 1/2" A square. Sew on drawn line. Trim 1/4" away from sewn line. Open and press to reveal print corner triangle, as shown. (Figure 4).

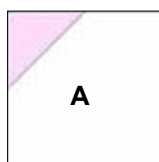


Figure 4

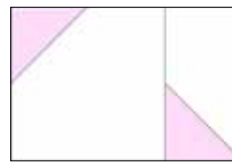


Figure 5

5. Sew together both units to make a row unit (Figure 5).

6. Sew together row units made in steps 1-5 to make one block quadrant. Quadrant measures 5" x 5" unfinished. Repeat to make a total of two quadrants (Figure 6).

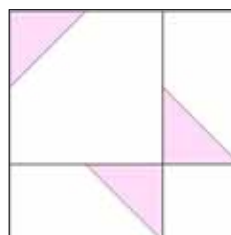


Figure 6 **Make 2.**

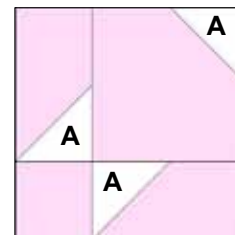


Figure 7 **Make 2.**

8. Sew together all four quadrants to complete one pieced block (Figure 8).

9. Make a total of sixty-three pieced blocks, three from one fat quarter.

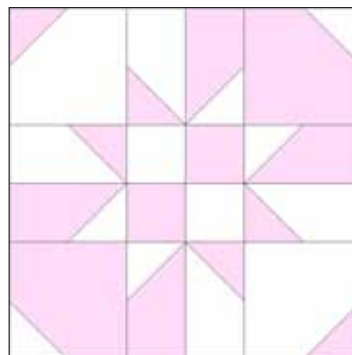


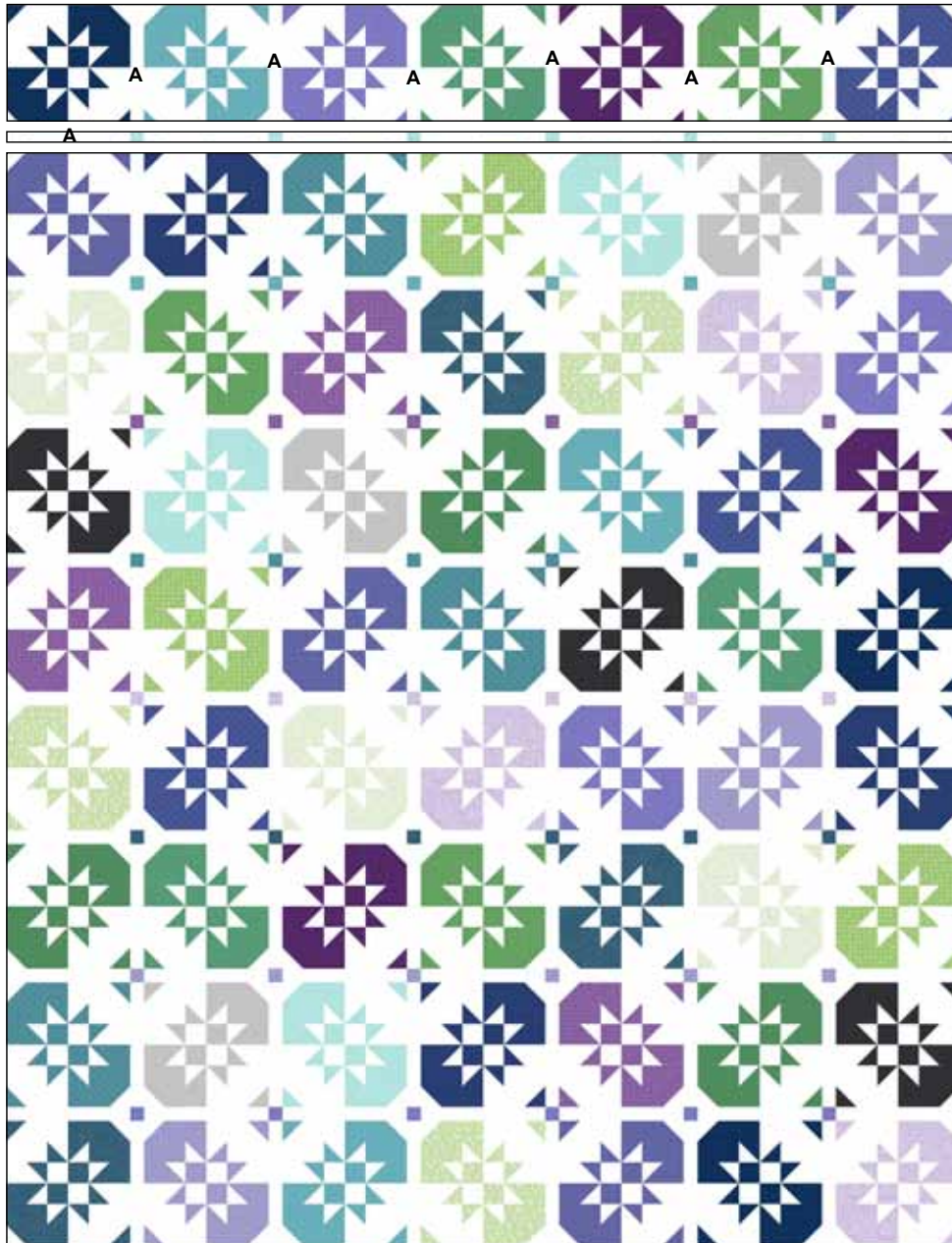
Figure 8

Quilt Assembly:

1. Pieced rows. Refer to quilt image/diagram for block orientation, arrange and sew together seven pieced blocks and six 1 1/2" x 9 1/2" A rectangles to make a pieced row. Make a total of nine pieced rows.
2. Pieced sashing rows. Arrange and sew together seven 1 1/2" x 9 1/2" A rectangles and six 1 1/2" print squares to make one pieced sashing row. Make a total of eight pieced sashing rows.
3. Sew together pieced rows and pieced sashing rows to complete quilt center.

Finishing:

1. Prepare backing and press well. Trim to 79" x 99".
2. Layer quilt top, batting, and backing. Baste layers together.
3. Quilt as desired.
4. Trim layers even with quilt top squaring corners.
5. Join 2 1/2" binding strips with diagonal seams. Press seams open. Attach binding to quilt using your favorite method.
6. Make a label and sew to the back of the quilt.



Quilt diagram

Whimsy

Fabric Collection by Heather Dutton
of Hang Tight Studio for P&B Textiles

Skus in Cool Fat Quarter Bundle



WHIM 4403 VV



WHIM 4406 C



WHIM 4407 L



WHIM 4408 BV



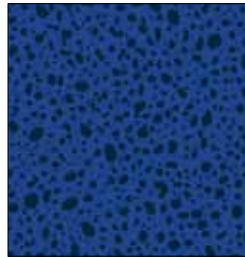
WHIM 4412 BV



WHIM 4404 B



WHIM 4409 BV



WHIM 4415 BB



WHIM 4403 BN



WHIM 4412 DT



WHIM 4409 T



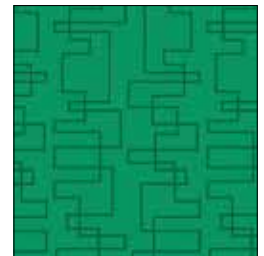
WHIM 4413 T



WHIM 4411 LT



WHIM 4405 G



WHIM 4414 GG



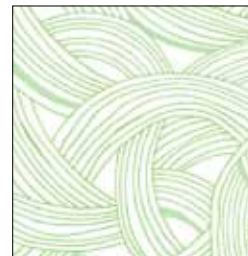
WHIM 4408 G



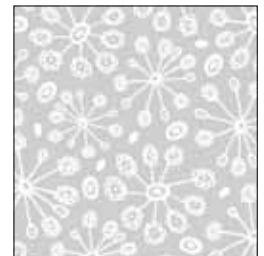
WHIM 4406 G



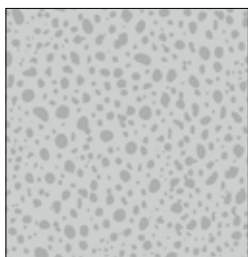
WHIM 4410 G



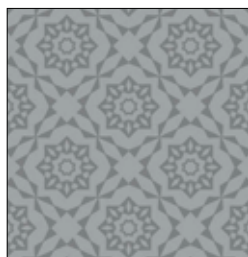
WHIM 4407 LG



WHIM 4405 LS



WHIM 4415 S



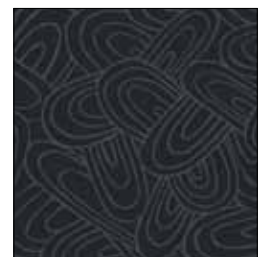
WHIM 4409 S



WHIM 4408 DS*



WHIM 4414 KS



WHIM 4412 KS

