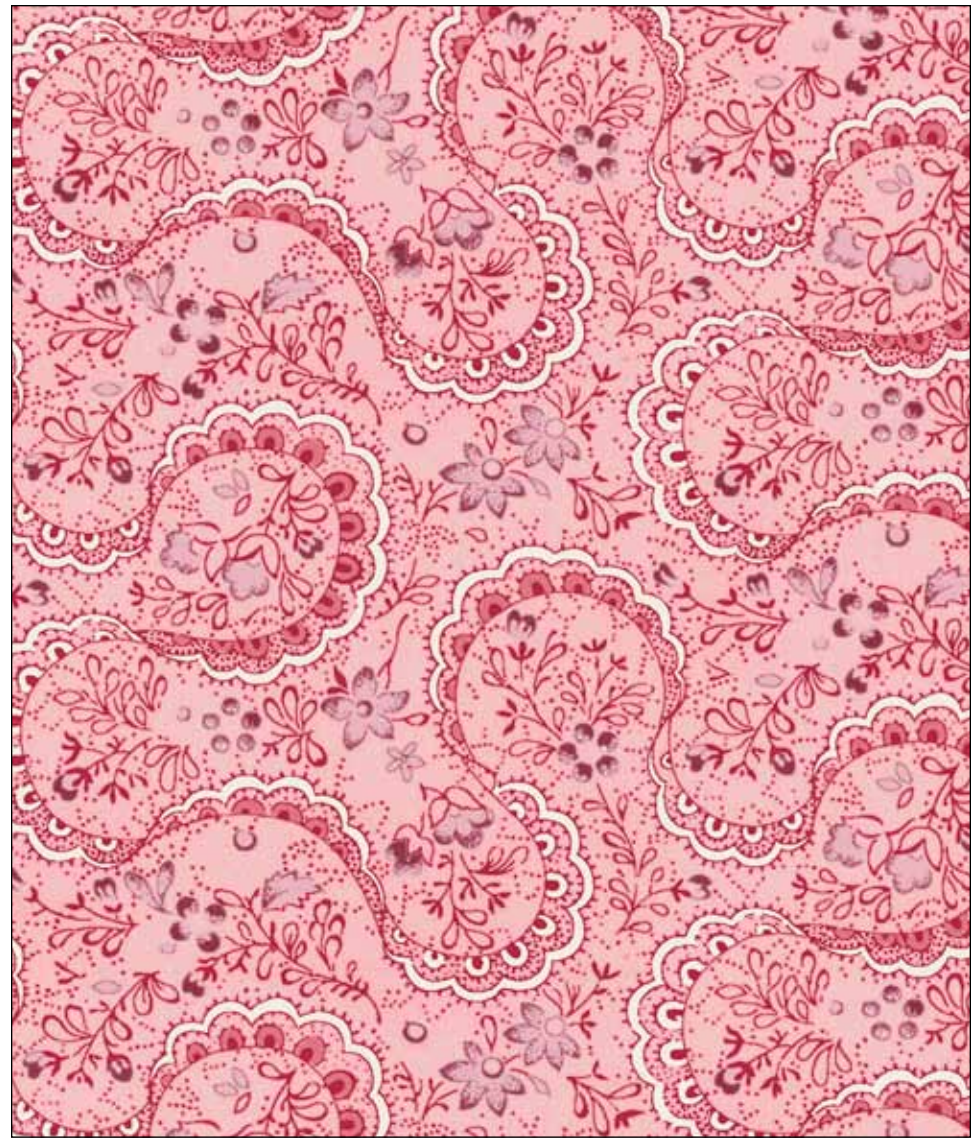


*Victoria*





Style #VICT  
Pattern #5669 E  
100%



Style #VICT  
Pattern #5669 P  
100%



Style #VICT  
Pattern #5670 E  
100%



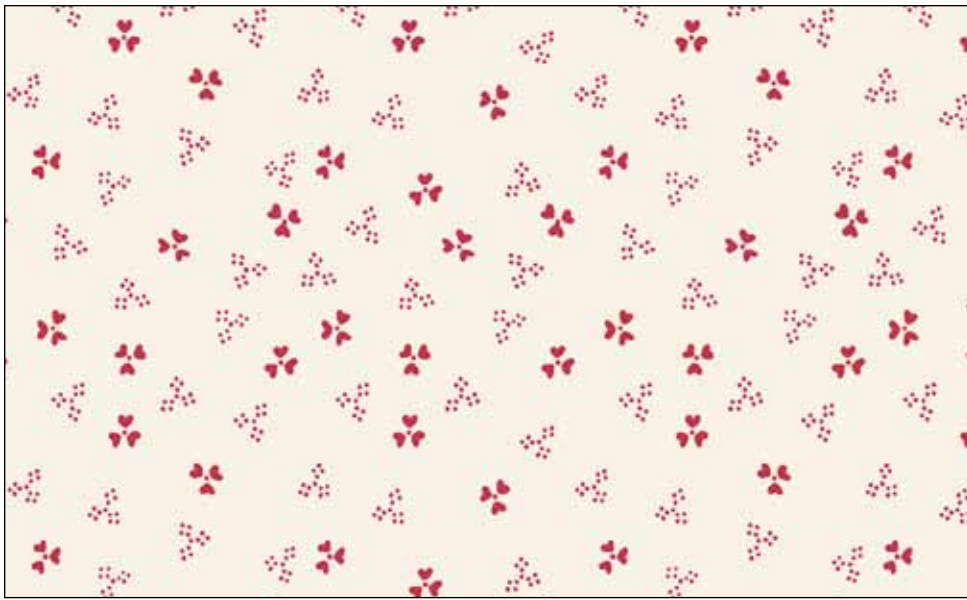
Style #VICT  
Pattern #5671 EP  
100%



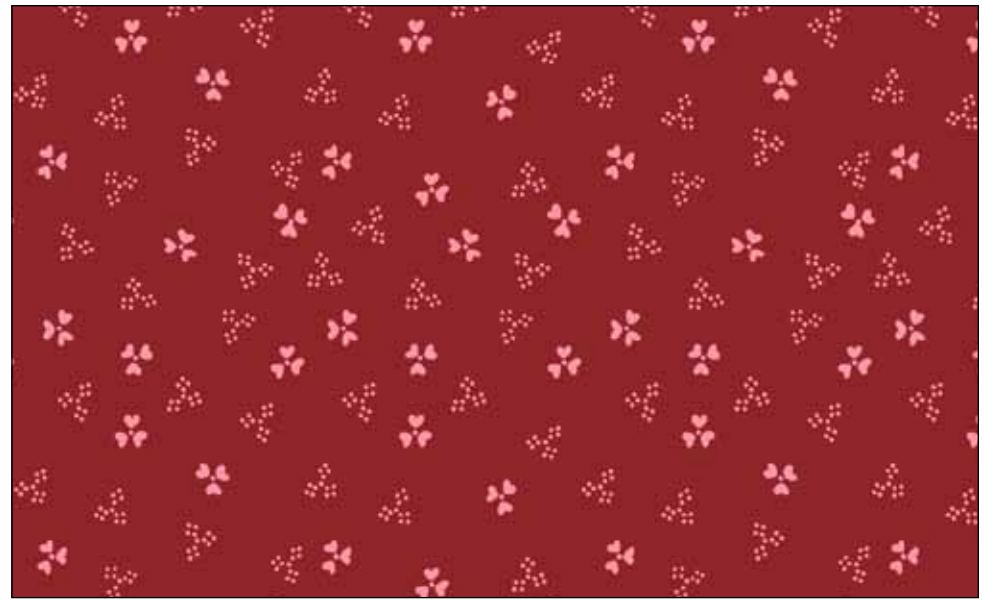
Style #VICT  
Pattern #5670 DP  
100%



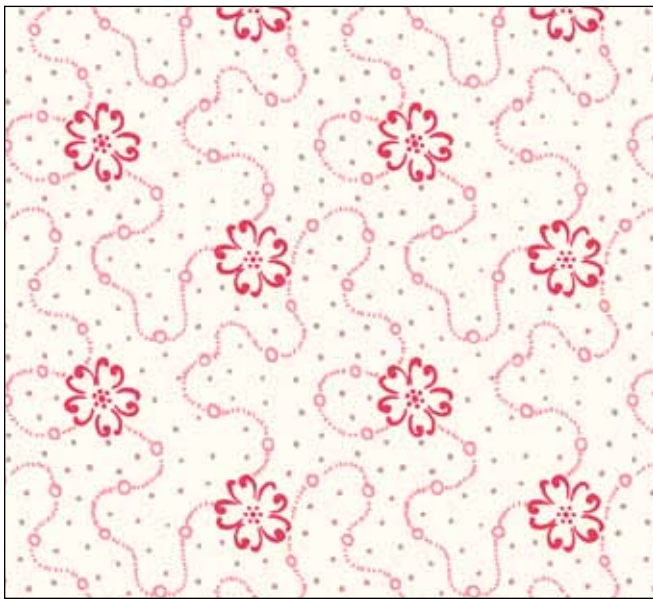
Style #VICT  
Pattern #5671 RP  
100%



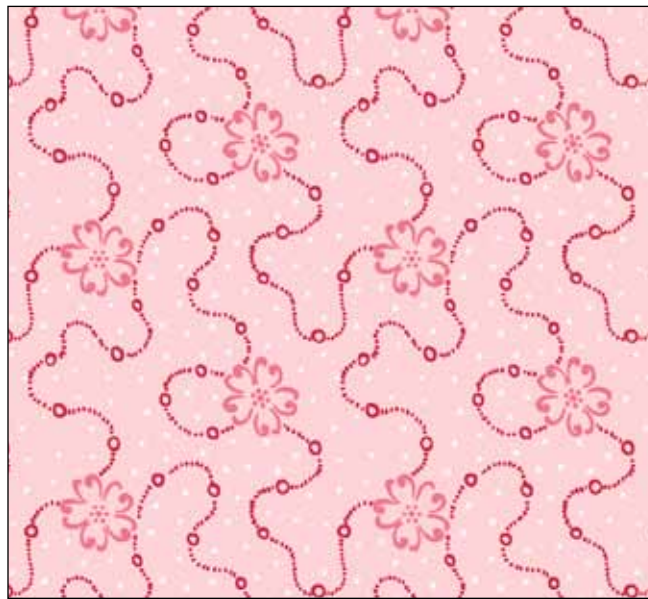
Style #VICT  
Pattern #5672 ER  
100%



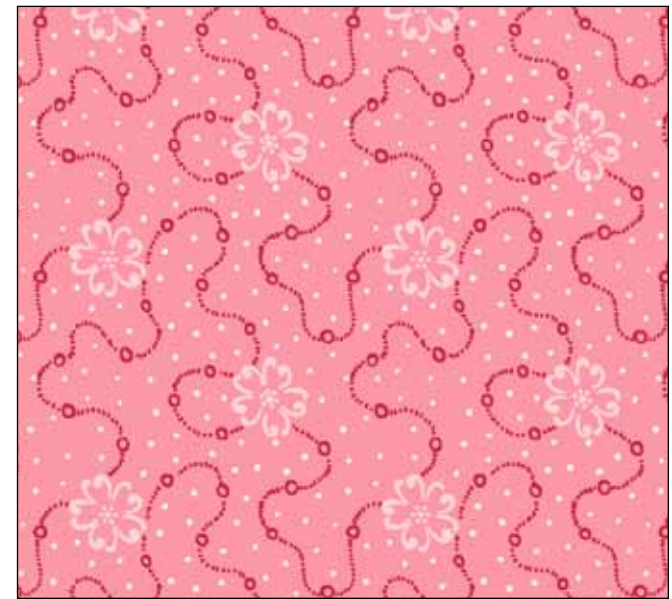
Style #VICT  
Pattern #5672 RP  
100%



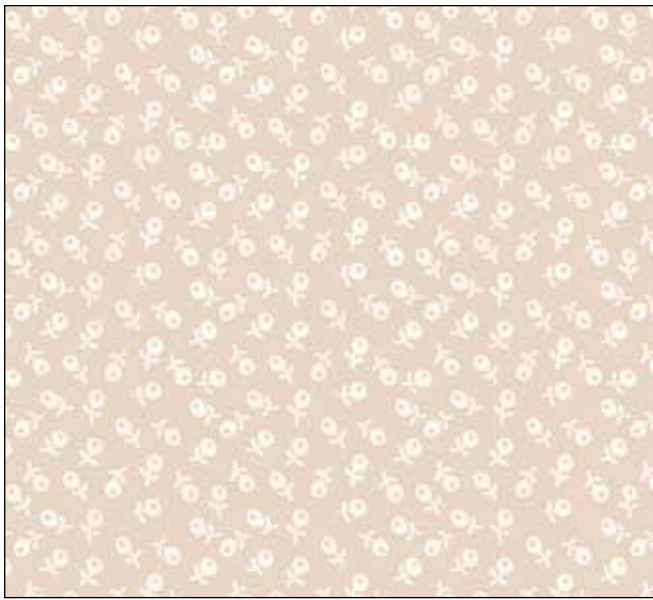
Style #VICT  
Pattern #5673 E  
100%



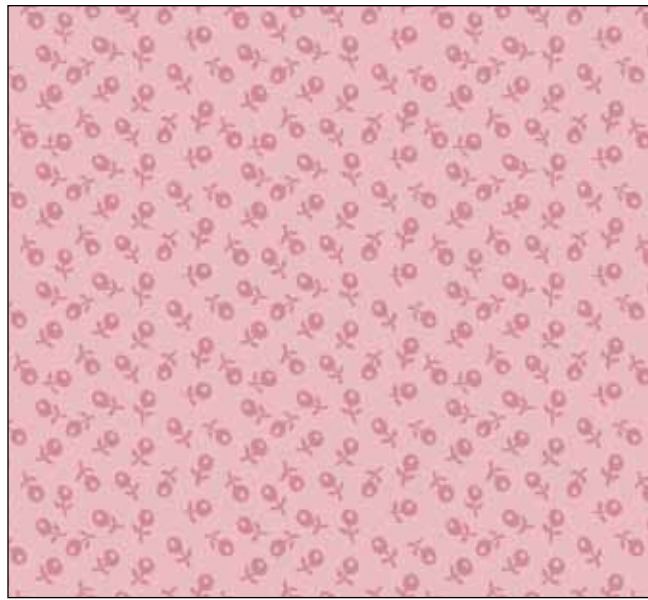
Style #VICT  
Pattern #5673 LP  
100%



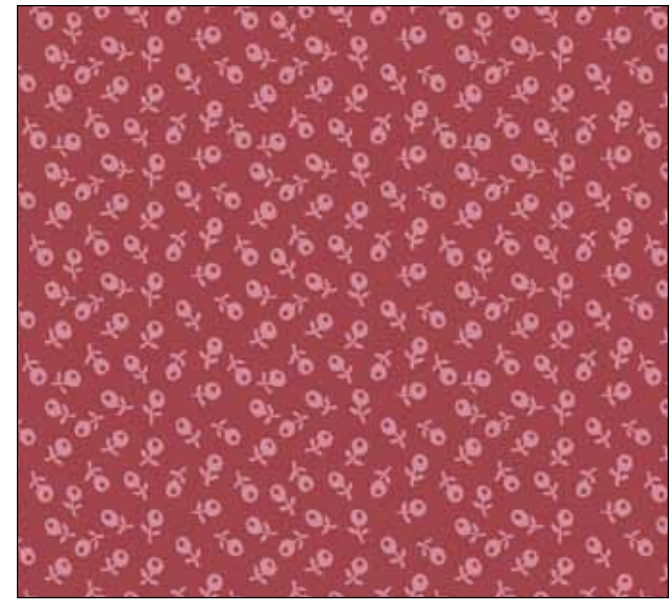
Style #VICT  
Pattern #5673 P  
100%



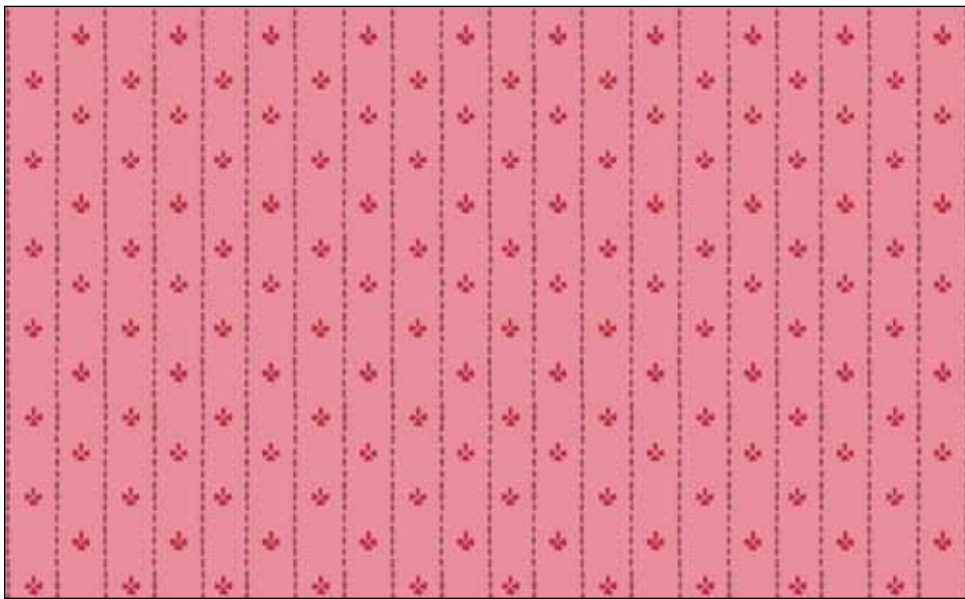
Style #VICT  
Pattern #5674 E  
100%



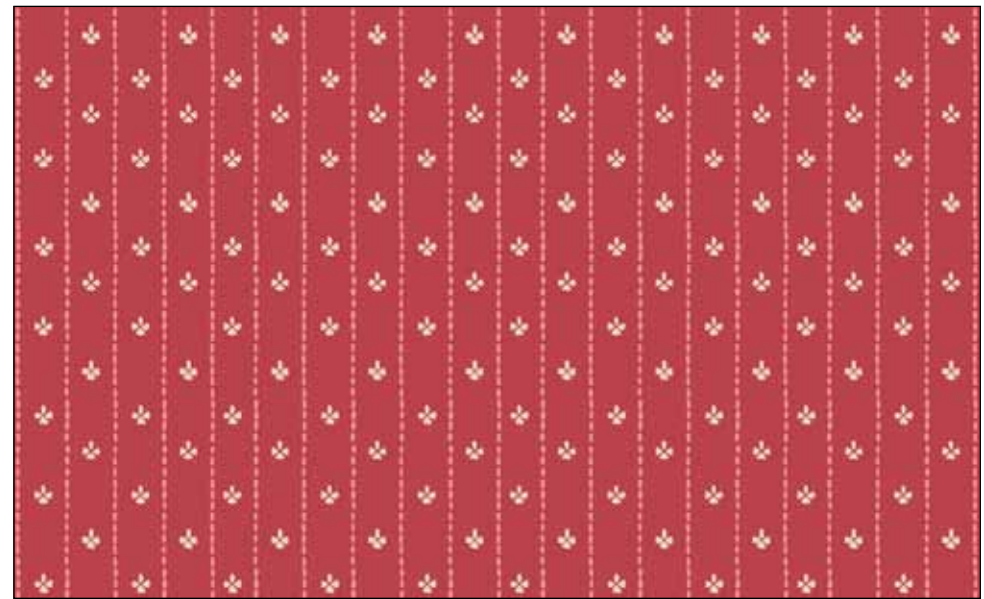
Style #VICT  
Pattern #5674 P  
100%



Style #VICT  
Pattern #5674 R  
100%

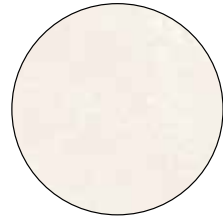


Style #VICT  
Pattern #5675 P  
100%



Style #VICT  
Pattern #5675 R  
100%

## BLENDER SUGGESTIONS:



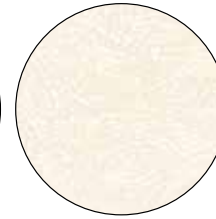
SUE7 303 EW



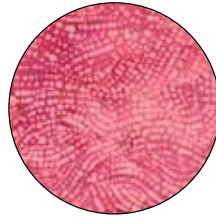
CSTO 5226 E



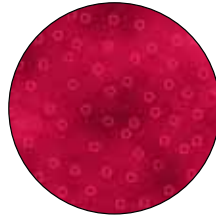
GRAS 5233 E



SERE 4492 E



SERE 4492 DP

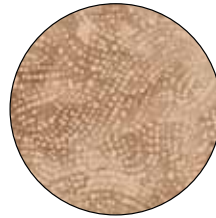


JEWEL 5358 DP

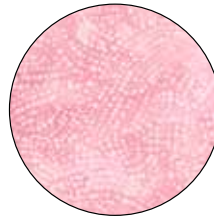
## 108" SUGGESTIONS:



GROO 4973 NE



SERW 5349 NE



SERW 5349 LP



100% cotton ♦ Cold wash & dry ♦ 44"/45" ♦ Colors may vary due to printing process

Not Intended for Children's Sleepwear

## Pattern for Purchase

### Pen Pals quilt design by Wendy Sheppard

WS55 Pattern available for purchase at:  
[www.pbtex.com](http://www.pbtex.com) • 6 pattern minimum order

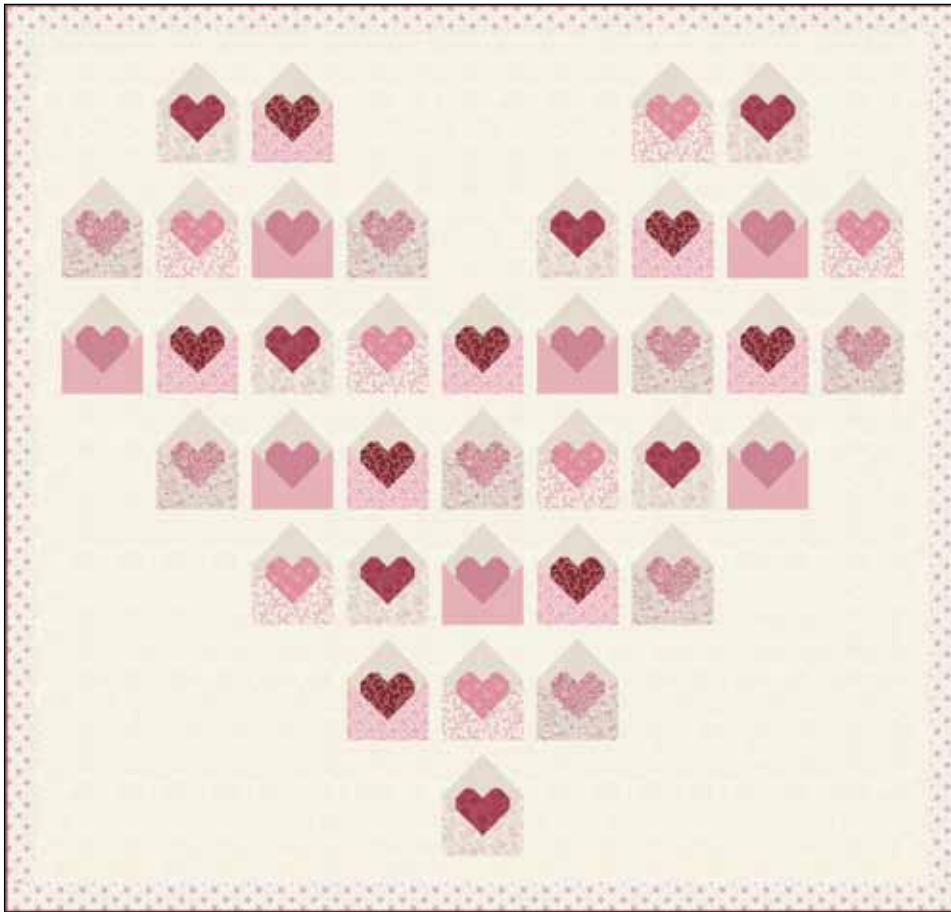
#### FABRIC REQUIREMENTS

SERE 4492 E .....	3 1/2 yards	VICT 5670 DP.....	1/4 yard
VICT 5674 E.....	1 1/4 yards	VICT 5671 RP .....	1/4 yard
VICT 5673 E .....	5/8 yard	VICT 5673 P .....	1/4 yard
VICT 5670 E .....	3/8 yard	VICT 5669 P.....	1/4 yard
VICT 5673 LP .....	3/8 yard	VICT 5675 P .....	1/4 yard
VICT 5671 EP .....	3/8 yard	VICT 5675 R.....	5/8 yard†
VICT 5669 E .....	3/8 yard		
VICT 5674 P .....	3/8 yard	Total yardage .....	9 3/8 yards

†Includes yardage for binding.

#### Kit Chart

Fabric (based on 15 yard bolts)	12	18	24
SERE 4492 E	3	5	6
VICT 5674 E	2	2	3
VICT 5673 E	1	1	2
VICT 5670 E	1	1	1
VICT 5673 LP	1	1	1
VICT 5671 EP	1	1	1
VICT 5669 E	1	1	1
VICT 5674 P	1	1	1
VICT 5670 DP	1	1	1
VICT 5671 RP	1	1	1
VICT 5673 P	1	1	1
VICT 5669 P	1	1	1
VICT 5675 P	1	1	1
VICT 5675 R	1	1	2



Quilt size approximately: 67 1/2" x 70"



Bed Runner size approximately: 20" x 92"

### Bed Runner design by Cyndi Hershey

Pattern available at:  
[www.pbtex.com](http://www.pbtex.com) when the fabric ships.

#### FABRIC REQUIREMENTS

VICT 5670 DP.....	1/2 yard
VICT 5670 E .....	7/8 yard
VICT 5671 RP .....	7/8 yard†
VICT 5672 ER .....	1/2 yard
VICT 5672 RP .....	1/4 yard
VICT 5673 P .....	1/4 yard
VICT 5674 R .....	1/4 yard
SUE7 303 BG .....	3/8 yard
<b>Total yardage .....</b>	<b>3 7/8 yards</b>

†Includes yardage for binding.

#### Kit Chart

Fabric (based on 15 yard bolts)	12	18	24
VICT 5670 DP	1	1	1
VICT 5670 E	1	2	2
VICT 5671 RP	1	2	2
VICT 5672 ER	1	1	1
VICT 5672 RP	1	1	1
VICT 5673 P	1	1	1
VICT 5674 R	1	1	1
SUE7 303 BG	1	1	1