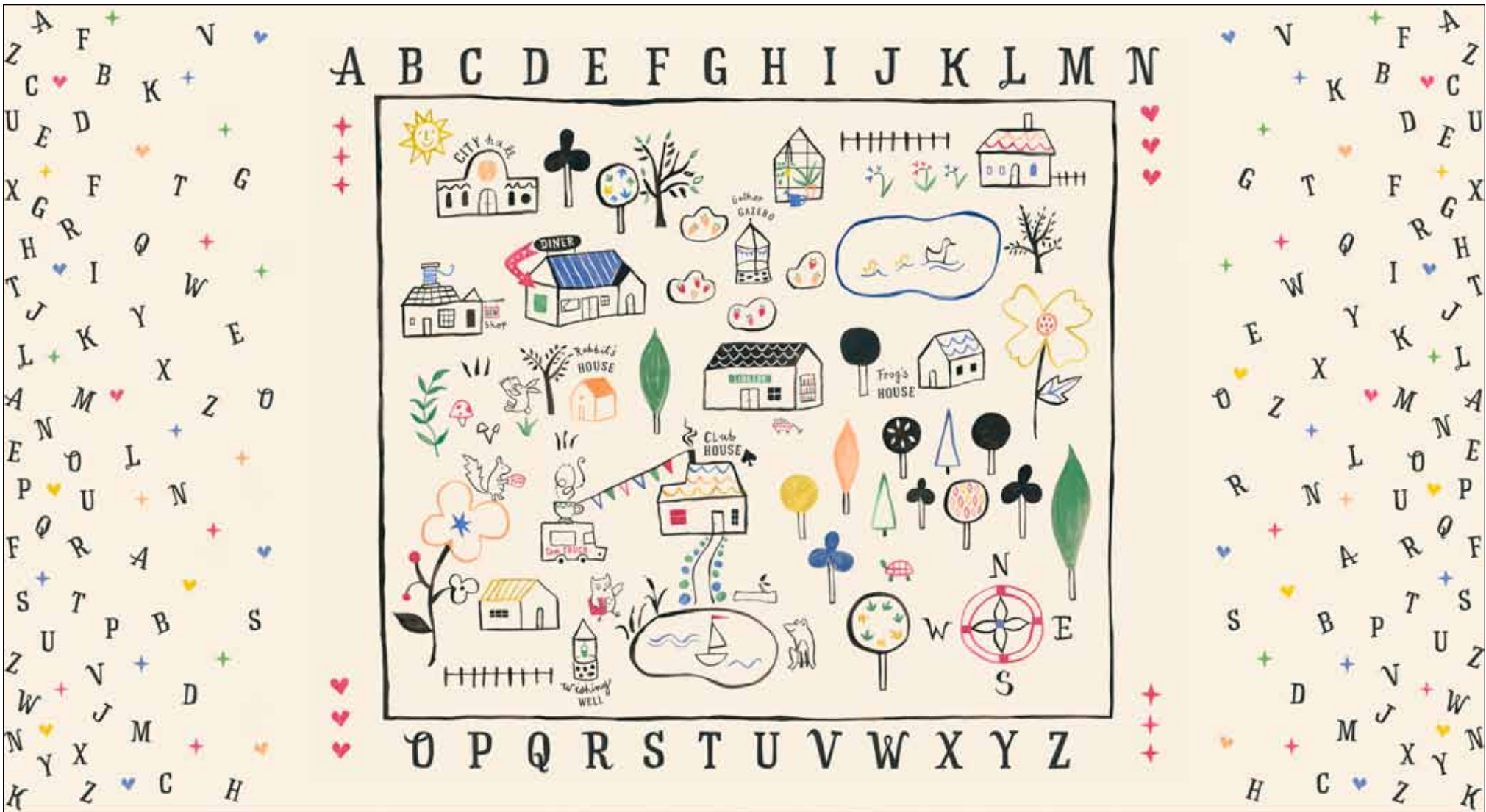


Story Time

by Jill McDonald

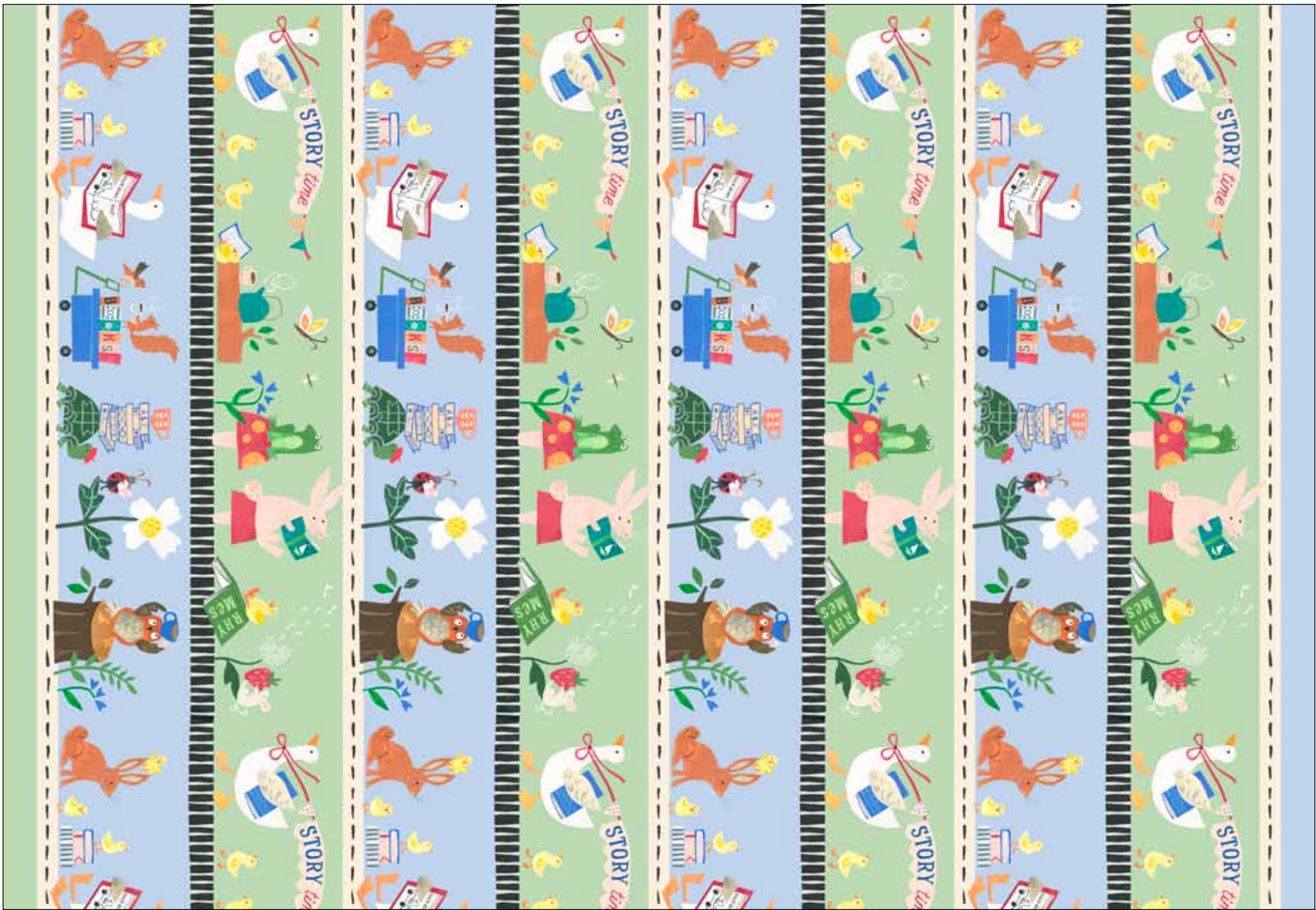




Style #STIM

Pattern #5588 PA

Rotated; reduced; 24" x 43"; 10 yards = 15 panels



Style #STIM

Pattern #5589 BG

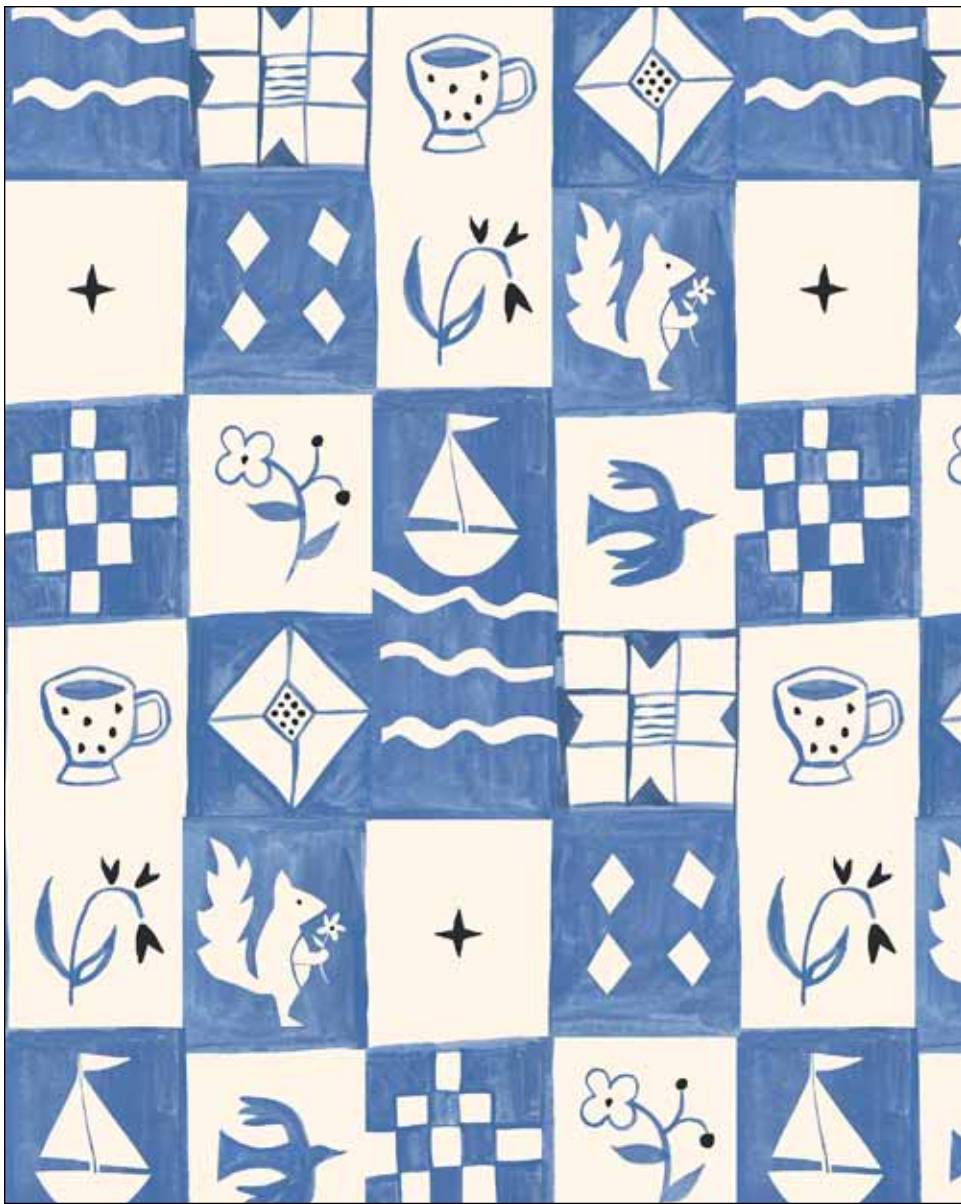
Reduced; 10" repeat; 4 repeats across the width



Style #STIM
Pattern #5589 BG
100%



Style #STIM
Pattern #5591 E
100%



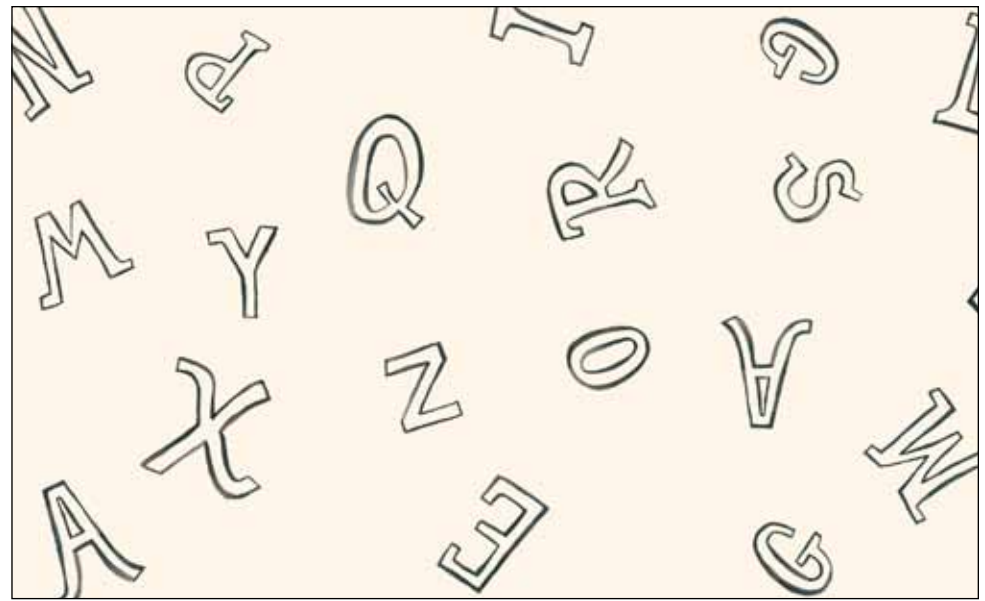
Style #STIM
Pattern #5592 BE
100%



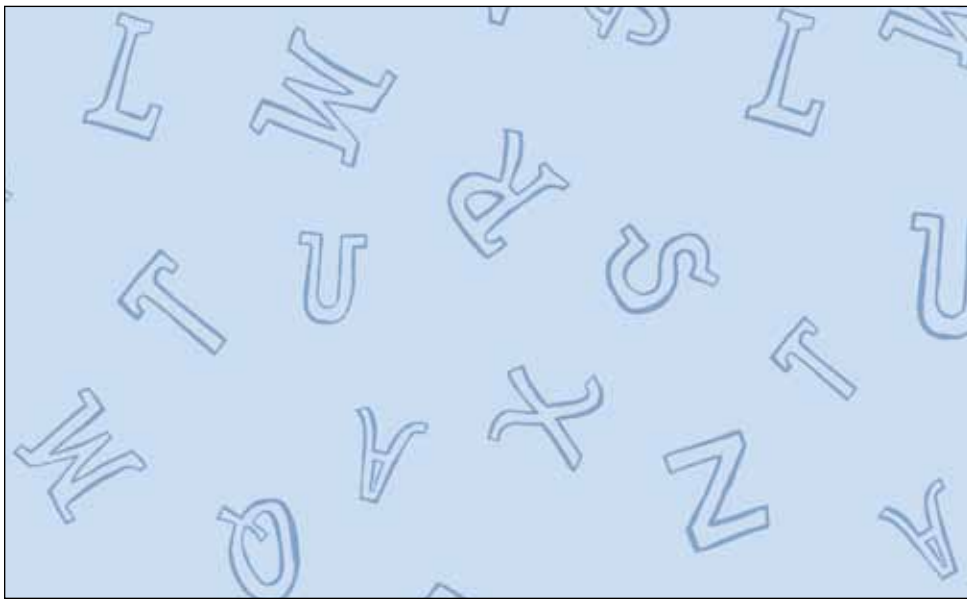
Style #STIM
Pattern #5592 KE
100%



Style #STIM
Pattern #5593 MU
100%



Style #STIM
Pattern #5594 E
100%



Style #STIM
Pattern #5594 LB
100%



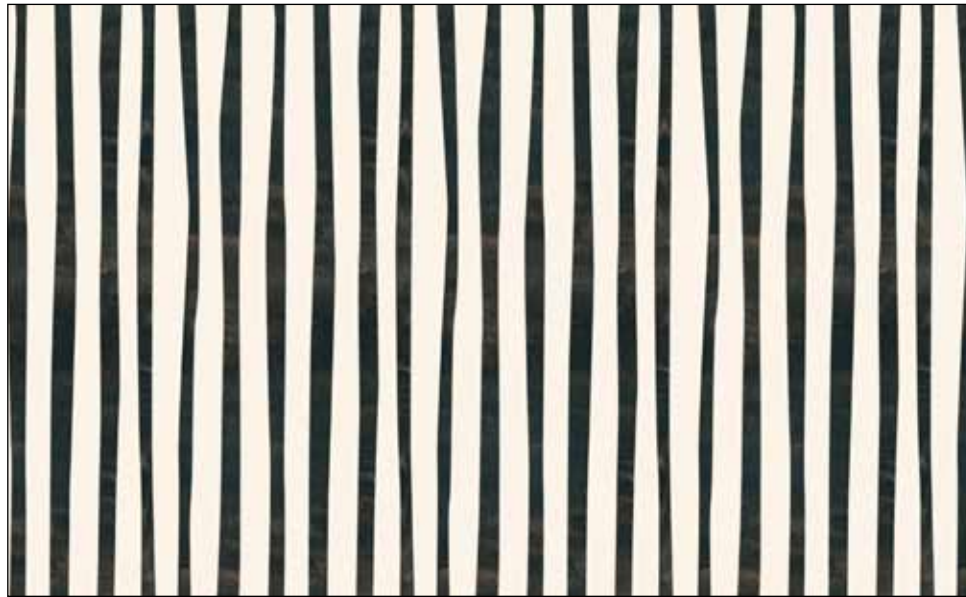
Style #STIM
Pattern #5594 LG
100%



Style #STIM
Pattern #5595 B
100%

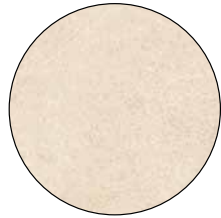


Style #STIM
Pattern #5595 E
100%

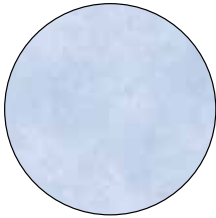


Style #STIM
Pattern #5596 KE
100%

BLENDER SUGGESTIONS:



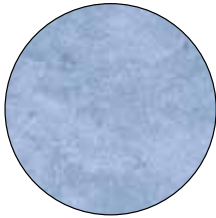
SUES 299 E



SUE5 301 LB



SUE5 301 HG



SUE6 302 BB



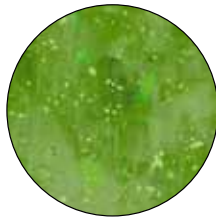
SUE6 302 B



CSTO 5226 LG



COSM 5130 E



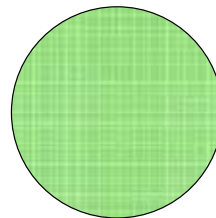
COSM 5130 AA



COSM 5130 Y

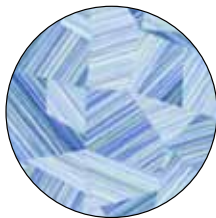


LDAR 4564 Y



LDAR 4959 MDG

108" SUGGESTIONS:



GEOW 5318 LB

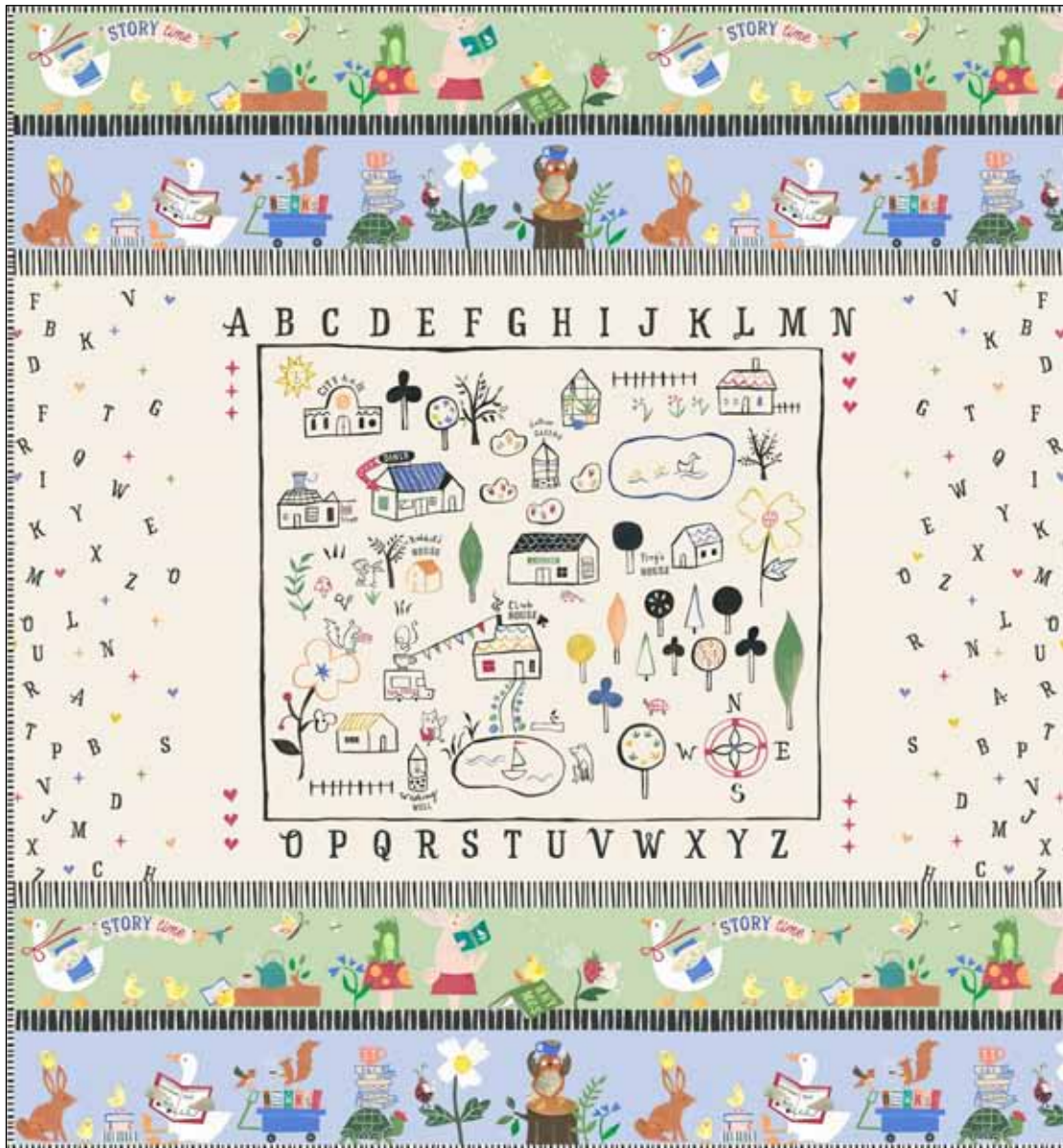


GEOW 5318 G



100% cotton ♦ Cold wash & dry ♦ 44"/45" ♦ Colors may vary due to printing process

Not Intended for Children's Sleepwear



Quilt size approximately: 40" x 43"

Story Time Play Quilt by Wendy Sheppard

Pattern available at:
www.pbtex.com when the fabric ships.

FABRIC REQUIREMENTS*

STIM 5588 PA..... 1 panel
 STIM 5589 BG 1 1/2 yards
 STIM 5596 KE 1/2 yard†

Total yardage 2 7/8 yards

*These yardages are estimates ONLY and may change on the pattern when it becomes available.

† Includes binding.

Kit Chart

Fabric (based on 15 yard bolts)	12	18	24
STIM 5588 PA	1	2	2
STIM 5589 BG	2	2	3
STIM 5596 KE	1	1	1

*10 yards = 15 panels



Quilt size approximately: 48" x 57"

Story Time Toddler Quilt by Wendy Sheppard

Pattern available at:
www.pbtext.com when the fabric ships.

FABRIC REQUIREMENTS*

- STIM 5588 PA..... 1 panel
- STIM 5589 BG 1 yard
- STIM 5594 LB 7/8 yard†
- STIM 5595 E 5/8 yard
- STIM 5592 BE 1 yard

Total yardage 4 3/8 yards

*These yardages are estimates ONLY and may change on the pattern when it becomes available.

† Includes binding.

Kit Chart

Fabric (based on 15 yard bolts)	12	18	24
STIM 5588 PA*	1	2	2
STIM 5589 BG	1	2	2
STIM 5594 LB	1	2	2
STIM 5595 E	1	1	2
STIM 5592 BE	1	2	2

*10 yards = 15 panels