

Still Life

by Jamie Kalvestran





Style #SLIF

Pattern #5619 PA

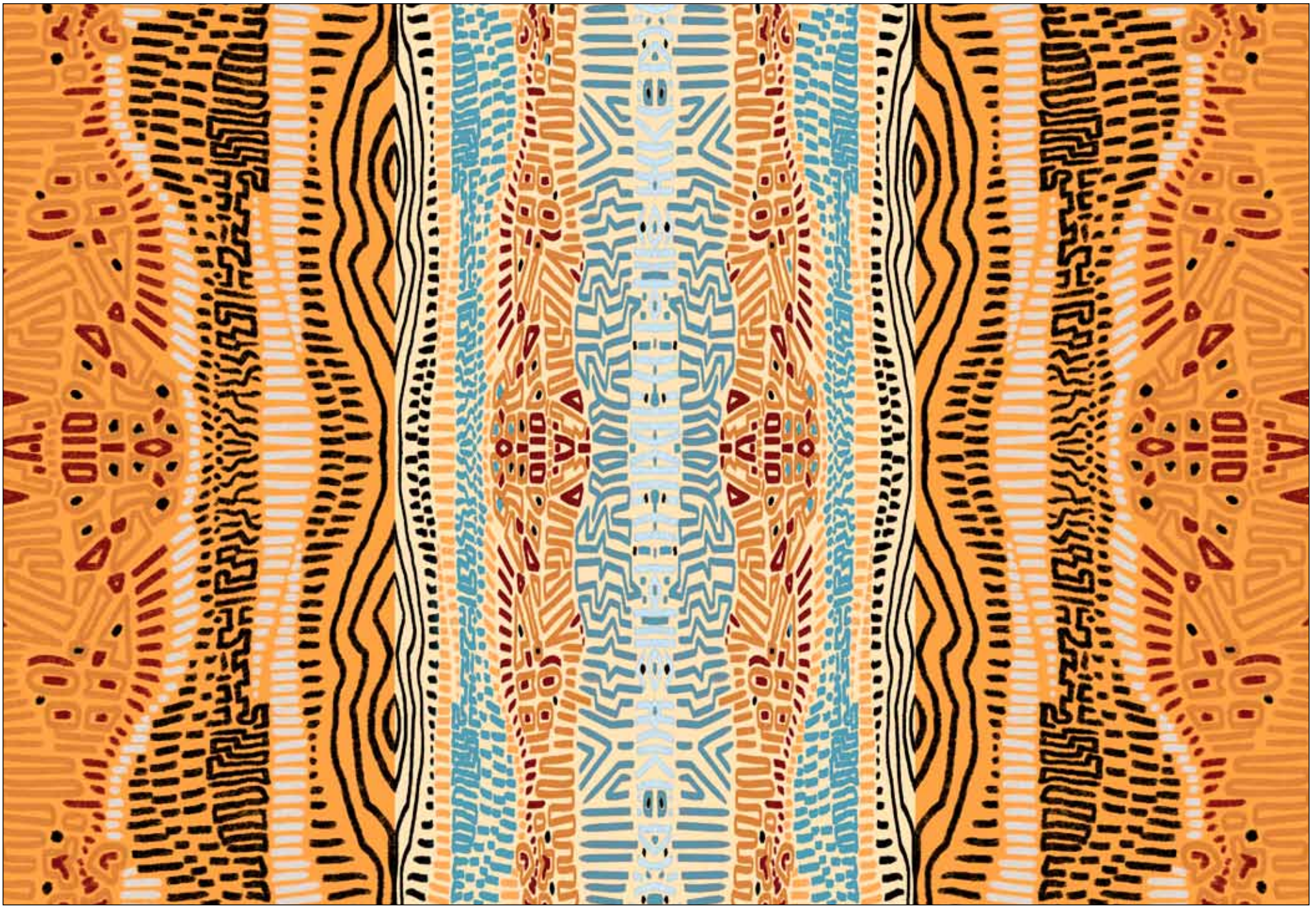
Rotated; reduced; 23 1/2" x 43"; 10 yards = 15 panels



Style #SLIF
Pattern #5620 MU
Reduced; 10" blocks; running yardage



Style #SLIF
Pattern #5621 MU
Reduced; WOF shown



Style #SLIF
Pattern #5621 MU
100%



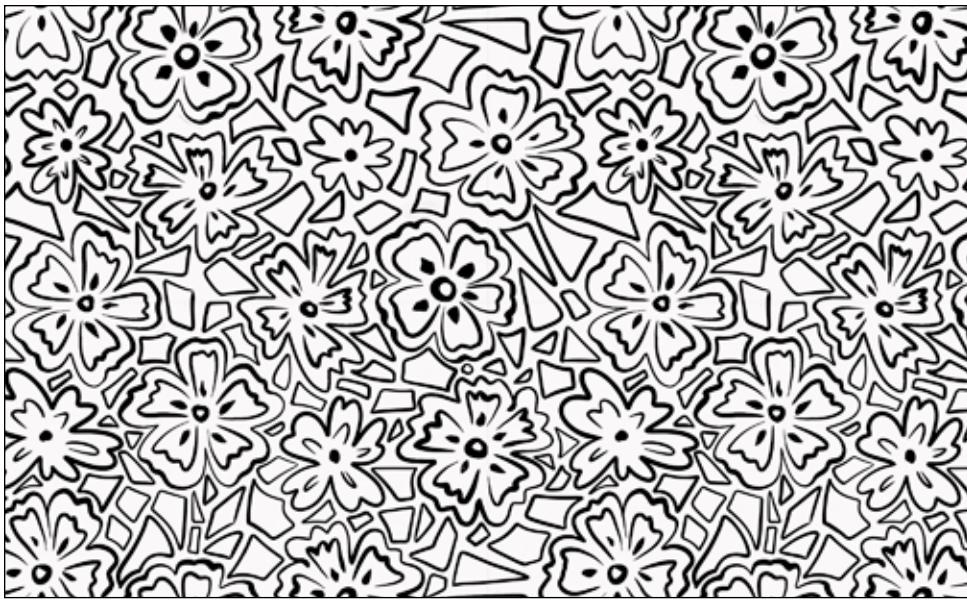
Style #SLIF
Pattern #5622 IB
Reduced



Style #SLIF
Pattern #5622 IB
100%



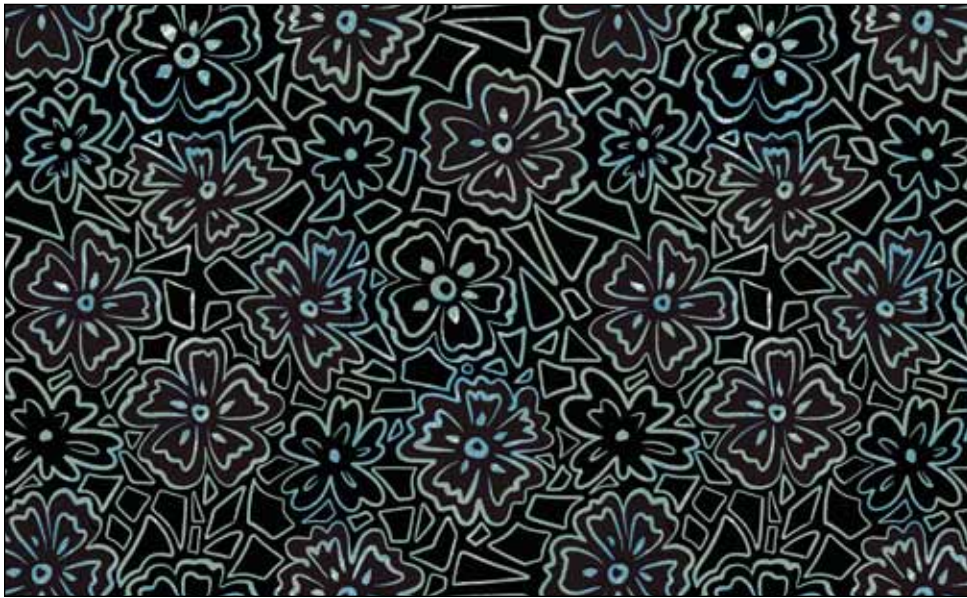
Style #SLIF
Pattern #5623 LMU
100%



Style #SLIF
Pattern #5624 WK
100%



Style #SLIF
Pattern #5625 W
100%



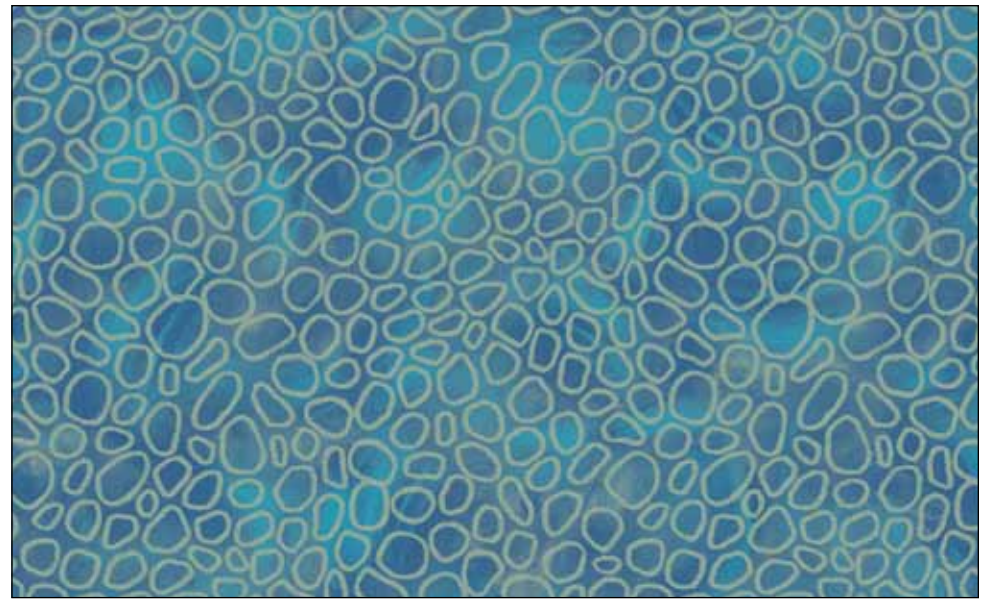
Style #SLIF
Pattern #5624 KB
100%



Style #SLIF
Pattern #5625 I
100%



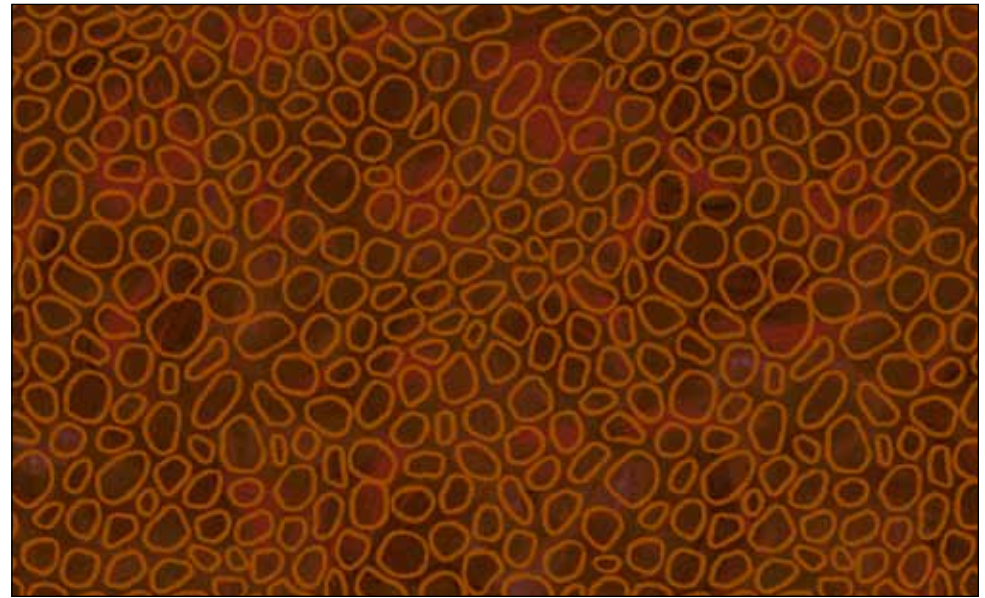
Style #SLIF
Pattern #5626 K
100%



Style #SLIF
Pattern #5628 B
100%



Style #SLIF
Pattern #5627 MU
100%



Style #SLIF
Pattern #5628 I
100%



Style #SLIF
Pattern #5629 O
100%



Style #SLIF
Pattern #5630 M
100%



Style #SLIF
Pattern #5629 SB
100%



Style #SLIF
Pattern #5630 O
100%

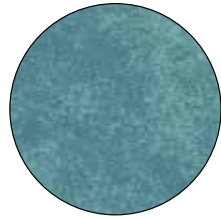


Style #SLIF
Pattern #5631 O
100%



Style #SLIF
Pattern #5631 T
100%

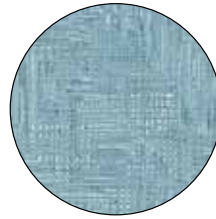
BLENDER SUGGESTIONS:



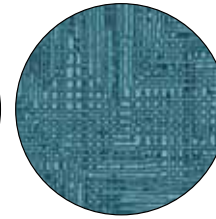
SUE7 303 BG



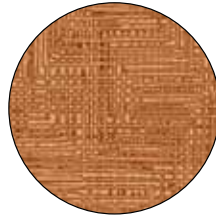
SUE6 302 LS



GRAS 5233 T



GRAS 5233 DT

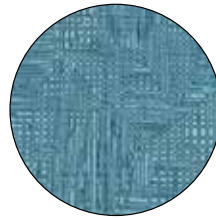


GRAS 5233 ZX

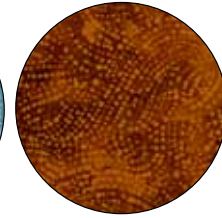


GRAS 5233 I

108" SUGGESTIONS:



GROO 4973 T

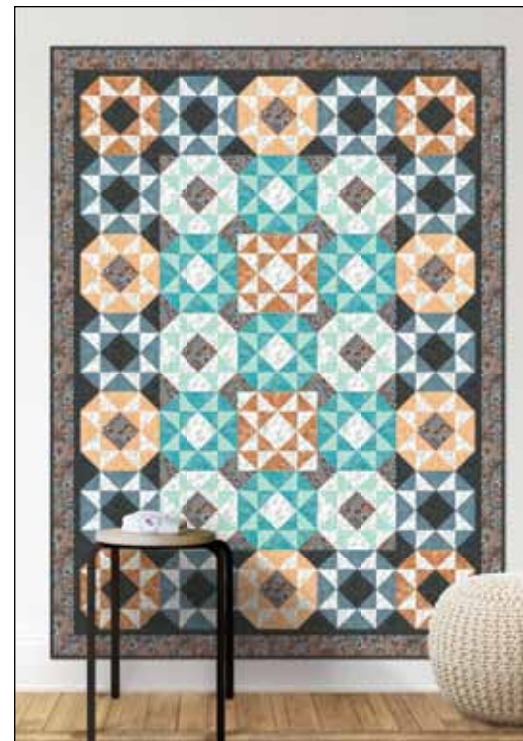


SERW 5349 I



100% cotton ♦ Cold wash & dry ♦ 44"/45" ♦ Colors may vary due to printing process

Not Intended for Children's Sleepwear





Quilt size approximately: 48 1/2" x 55"

Pattern for Purchase

Still Life Blooms quilt design by Jamie Kalvestran

JDK - 132 Pattern available for purchase at:
www.pbtex.com • 6 pattern minimum order

FABRIC REQUIREMENTS

SLIF 5619 PA 1 panel
 SLIF 5620 MU 3 blocks
 SLIF 5621 MU 1/2 yard
 SLIF 5623 LMU 1/2 yard
 SLIF 5626 K..... 3/4 yard
 SLIF 5627 MU 3/4 yard†
 SLIF 5630 O..... 1/4 yard

Total yardage 4 yards

†Includes yardage for binding.

Kit Chart

Fabric (based on 15 yard bolts)	12	18	24
SLIF 5619 PA*	1	2	2
SLIF 5620 MU	1	1	2
SLIF 5621 MU	1	1	1
SLIF 5623 LMU	1	1	1
SLIF 5626 K	1	1	2
SLIF 5627 MU	1	1	2
SLIF 5630 O	1	1	1

*10 yards = 15 panels



Quilt size approximately: 69" x 93"

Pattern for Purchase

Galaxies Beyond quilt design by Jamie Kalvestran

JDK - 131 Pattern available for purchase at:
www.pbtex.com • 6 pattern minimum order

FABRIC REQUIREMENTS

SLIF 5622 IB 2 yards
 SLIF 5623 LMU 2 1/8 yards
 SLIF 5624 KB..... 2 yards†
 SLIF 5628 B 1 yard
 SLIF 5630 M 7/8 yard
 SLIF 5630 O..... 3/4 yard
 SLIF 5631 O..... 3/4 yard
 SLIF 5631 T..... 7/8 yard

Total yardage 10 3/8 yards

†Includes yardage for binding.

Kit Chart

Fabric (based on 15 yard bolts)	12	18	24
SLIF 5622 IB	2	3	4
SLIF 5623 LMU	2	3	4
SLIF 5624 KB	2	3	4
SLIF 5628 B	1	2	2
SLIF 5630 M	1	2	2
SLIF 5630 O	1	1	2
SLIF 5631 O	1	1	2
SLIF 5631 T	1	1	2



Quilt size approximately: 49" x 67"

Pattern for Purchase

Cats & Kittens quilt design by Jamie Kalvestran

JDK - 130 Pattern available for purchase at:
www.pbtex.com • 6 pattern minimum order

FABRIC REQUIREMENTS

SLIF 5621 MU 3/8 yard
 SLIF 5623 LMU 3/4 yard
 SLIF 5625 W 1 yard
 SLIF 5626 K..... 3/4 yard†
 SLIF 5628 B 1/2 yard
 SLIF 5628 I..... 1/2 yard
 SLIF 5630 M 3/4 yard
 SLIF 5630 O..... 1/4 yard
 SLIF 5631 T 1 1/2 yards

Total yardage 5 3/8 yards

†Includes yardage for binding.

Kit Chart

Fabric (based on 15 yard bolts)	12	18	24
SLIF 5621 MU	1	1	1
SLIF 5623 LMU	1	1	2
SLIF 5625 W	1	2	2
SLIF 5626 K	1	1	2
SLIF 5628 B	1	1	1
SLIF 5628 I	1	1	1
SLIF 5630 M	1	1	2
SLIF 5630 O	1	1	1
SLIF 5631 T	2	2	3



Bag size approximately: 11" wide x 16" tall x 5" deep

FABRIC REQUIREMENTS*

SLIF 5621 MU 2/3 yard
 SLIF 5628 I 7/8 yard

Total yardage 1 5/8 yards

Kit Chart (left)

Fabric (based on 15 yard bolts)	12	18	24
SLIF 5621 MU	1	1	2
SLIF 5628 I	1	2	2

Kit Chart (right)

Fabric (based on 15 yard bolts)	12	18	24
SLIF 5622 IB	1	1	2
SLIF 5628 B	1	2	2

Pattern for Purchase
 Yin-Yang Handbag by Jamie Kalvestran

JDK - 102 Pattern available for purchase at:
www.pbtex.com • 6 pattern minimum order



FABRIC REQUIREMENTS*

SLIF 5622 IB 2/3 yard
 SLIF 5628 B 7/8 yard

Total yardage 1 5/8 yards