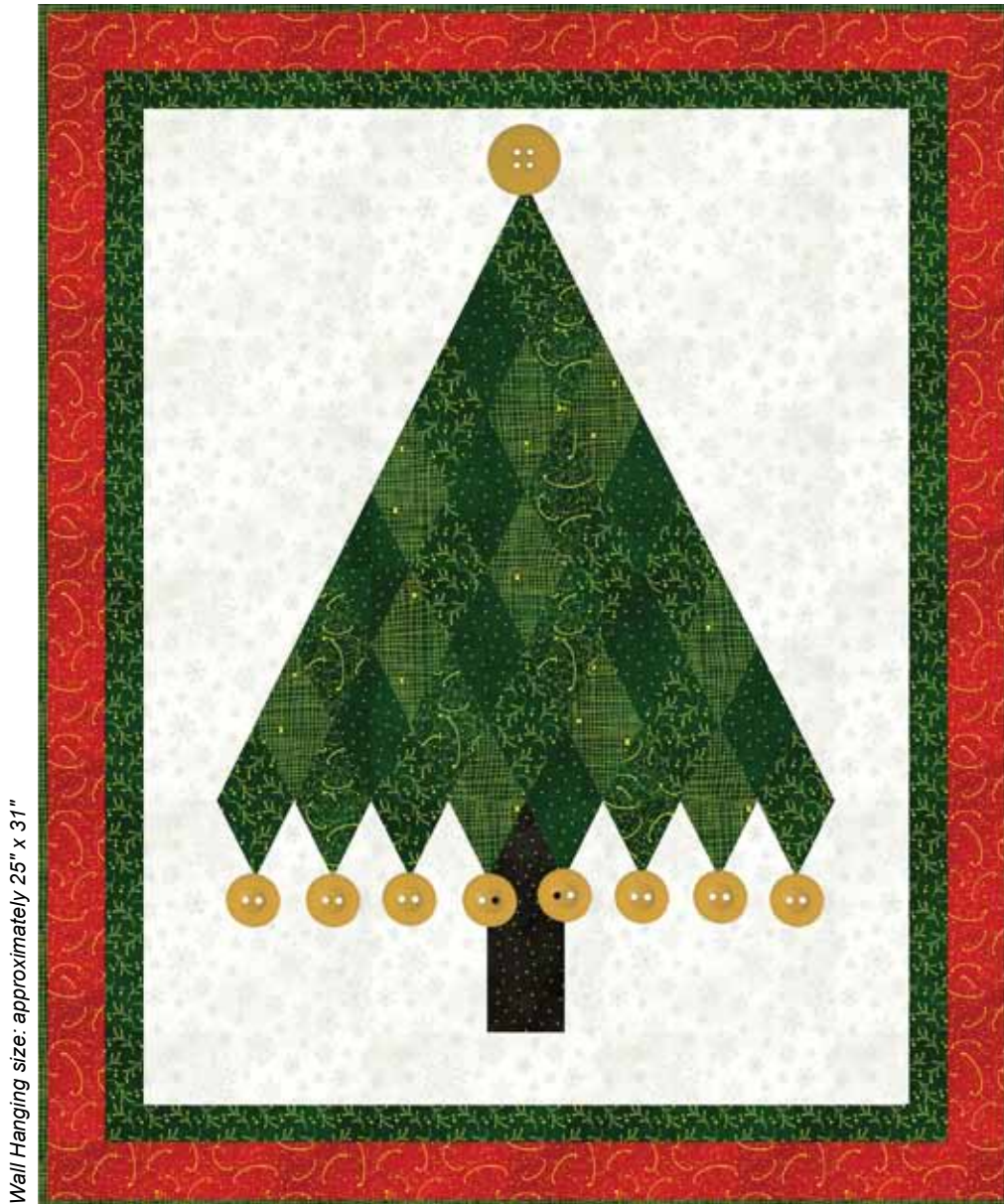
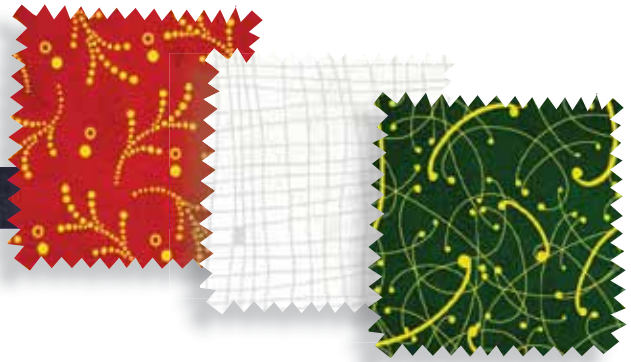


# Sparkle Suede

Oh Christmas Tree! wall hanging design by Phyllis Dobbs



Wall Hanging size: approximately 25" x 31"

Featuring fabrics from  
Sparkle Suede by P&B Textiles



P&B Textiles • pbtex.com • 800-351-9087 • 208 Clock Tower Square, Portsmouth, RI 02871



# Sparkle Suede

Fabric collection by P&B Textiles

Oh Christmas Tree! wall hanging designed by Phyllis Dobbs

Skill level: Confident Beginner • Finished Quilt Size: approximately 25" x 31"

## Yardages:

Fabric A: **SPRK 4175 WS**..... 5/8 yard  
 Fabric B: **SPRK 4171 G**..... Fat Eighth  
 Fabric C: **SPRK 4174 G**..... Fat Eighth  
 Fabric D: **SPRK 4173 G**..... 3/8 yard  
 Fabric E: **SPRK 4172 G**..... 3/8 yard  
 Fabric F: **SPRK 4171 K**..... Fat Eighth  
 Fabric G: **SPRK 4174 R**..... 3/8 yard  
 Backing: **SPRK 4173 R suggested**..... 1 yard  
 Batting ..... 29" x 35"  
 Additional supplies: eight 1/2" gold buttons  
 and one 1" gold button,  
 fusible web: 3/4 yard of 20"

## Cutting Instructions:

*Please read all instructions carefully before beginning. Strips are cut across the width of fabric (perpendicular to selvages) unless otherwise stated. All seams are sewn with a 1/4" seam unless otherwise stated. Label all pieces.*

### From Fabric A:

1. Cut one 20 1/2" x 26 1/2" rectangle.

### From Fabric B:

1. Cut nine of Template A.

### From Fabric C:

1. Cut seven of Template A.

### From Fabric D:

1. Cut two 1 1/2" x 26 1/2" strips.
2. Cut two 1 1/2" x 22 1/2" strips.
3. Cut ten of Template A.

### From Fabric E:

1. Cut ten of Template A.
2. Cut three 2 1/4" strips for binding.

### From Fabric F:

1. Cut one of Template B.

### From Fabric G:

1. Cut two 2" x 28 1/2" strips.
2. Cut two 2" x 25 1/2" strips.

## Piecing Instructions:

**Note:** You may want to arrange Template A pieces prior to sewing so that no identical pieces are adjacent to each other.

1. Sew Template A pieces together as shown in Figure 1. Sew eight for row A, seven for row B, six for row C, five for row D and four for row E. Press.

2. Sew Template B to row E as shown (Figure 1). Sew three for row F, two for row G and one makes row H. Press.

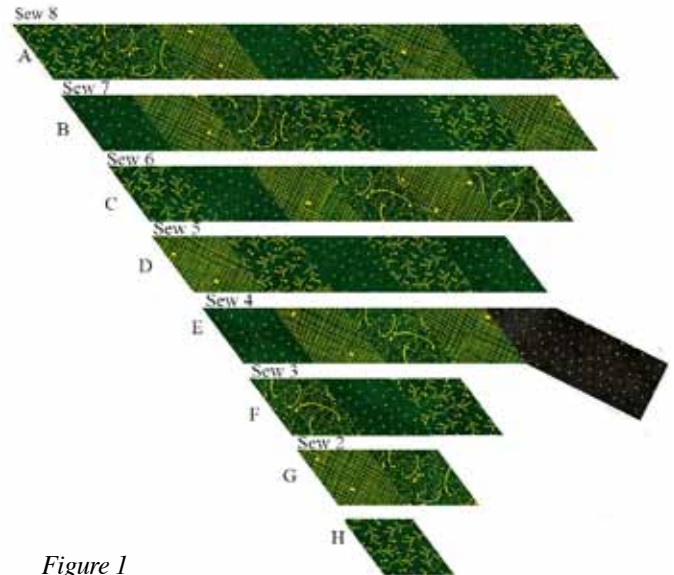


Figure 1

3. Sew rows A-H together. Press. Use rotary cutter to trim 1/4" away from all outer edges of tree
4. Following the directions of the manufacturer of the fusible web, fuse the web to the back of the tree, cutting off excess web around the edges. Center the tree vertically onto the 20 1/2" x 26 1/2" A rectangle and fuse to the block. Appliqué to the background with a zig zag machine stitch (Figure 2).



Figure 2

5. Sew one 26 1/2" D strip to opposite sides. Press. Sew one 22 1/2" D strip to the top and bottom of wall hanging. Press (Figure 3).



Figure 3

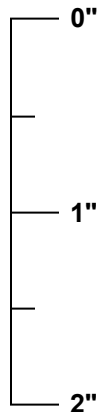
6. Sew one 28 1/2" G strip to opposite sides. Press. Sew one 25 1/2" G strip to the top and bottom of wall hanging. Press (Figure 4).



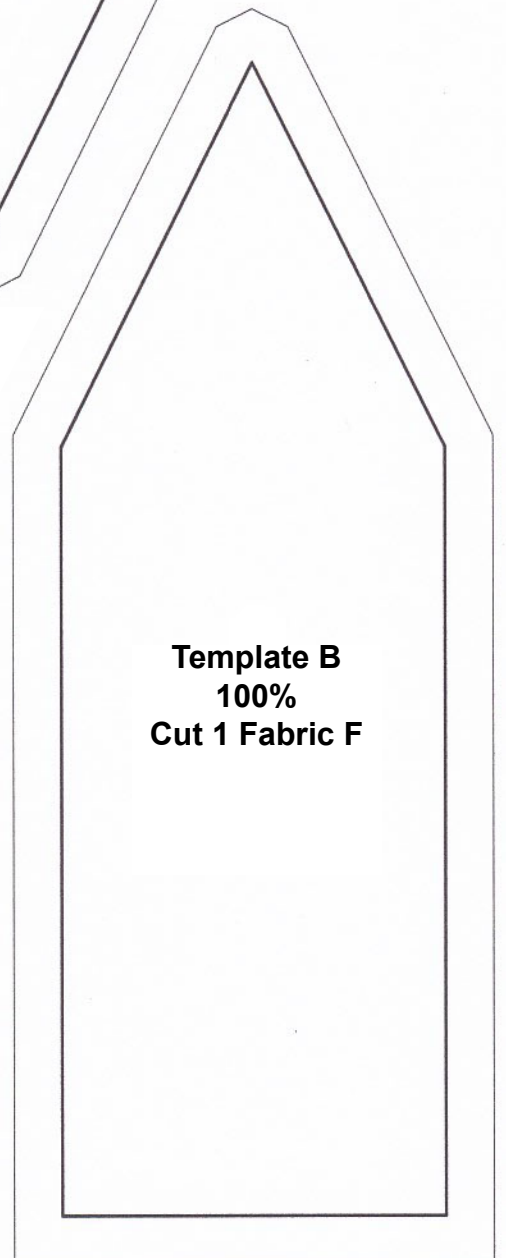
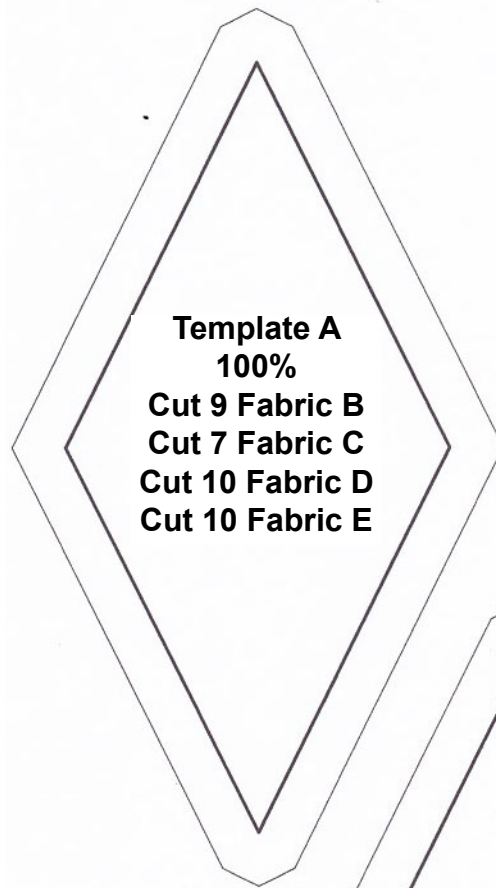
Figure 4

### Finishing:

1. Press backing well.
2. Layer backing, batting and quilt top. Baste layers together.
3. Quilt as desired.
4. Trim layers even with wall hanging top, squaring corners.
5. Join 2 1/2" E binding strips with diagonal seams. Press seams open. Press strip in half lengthwise with wrong sides together to make double-fold binding. Sew binding to quilt using your favorite method.
6. Sew one gold 1/2" button to each bottom point of the tree. Sew gold 1" button to the top of the tree.
7. Make a label and sew to back of the quilt.

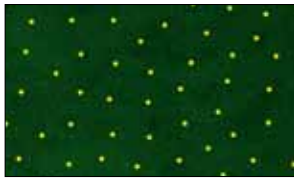


Scale Check for pdf files. When you print these templates, this ruler should measure 2 inches long. If it does not, change, "page scaling" to "none" in the print dialog box.

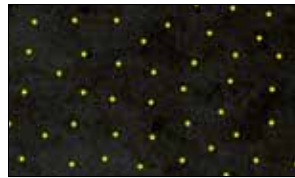


# Sparkle Suede

Fabric Collection by P&B Textiles  
 Patterns on fabric prints in silver or  
 gold ink (shown as white or yellow)



SPRK 4171 G\*



SPRK 4171 K\*



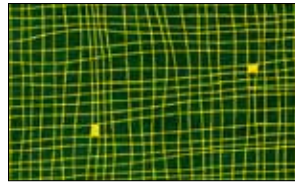
SPRK 4171 N



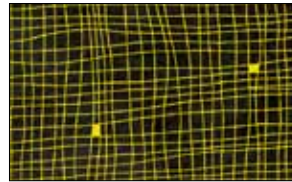
SPRK 4171 R



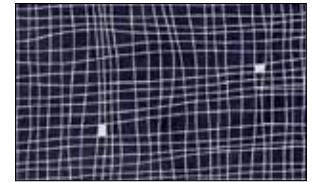
SPRK 4171 WS



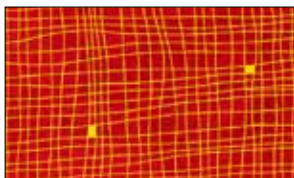
SPRK 4172 G\*



SPRK 4172 K



SPRK 4172 N



SPRK 4172 R



SPRK 4172 WS



SPRK 4173 G\*



SPRK 4173 K



SPRK 4173 N



SPRK 4173 R



SPRK 4173 WS



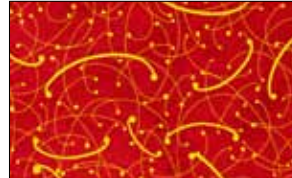
SPRK 4174 G\*



SPRK 4174 K



SPRK 4174 N



SPRK 4174 R\*



SPRK 4174 WS



SPRK 4175 N



SPRK 4175 WS\*