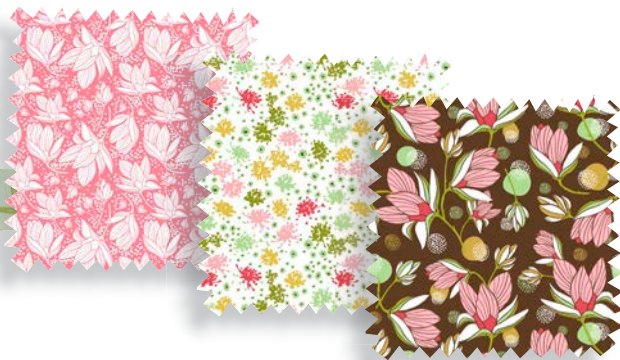


Southern Hospitality

Quilt Design by Wendy Sheppard



Quilt size: approximately 75" x 86"

Featuring fabrics from
Southern Hospitality by Heather Dutton
of Hang Tight Studio for P&B Textiles



P&B Textiles • pbtex.com • 800-351-9087 • 208 Clock Tower Square, Portsmouth, RI 02871

Southern Hospitality

Fabric collection by Heather Dutton of Hang Tight Studio for P&B Textiles

Quilt designed by Wendy Sheppard

Skill level: Advanced Beginner • Finished Quilt Size: approximately 75" x 86" • Finished Block Size: approximately 10" x 10"

Quilt Yardages:

	Green Border	Brown Border	
Fabric A:	WHIM 4410 G	WHIM 4410 G	3/8 yard
Fabric B:	WHIM 4410 P	WHIM 4410 P	3/8 yard
Fabric C:	WHIM 4413 Y	WHIM 4413 Y	5/8 yard
Fabric D:	WHIM 4415 LY	WHIM 4415 LY	4 yard
Fabric E:	SOUH 4422 MU	SOUH 4422 MU	1/2 yard
Fabric F:	SOUH 4425 P	SOUH 4425 P	5/8 yard
Fabric G:	SOUH 4426 Z	SOUH 4426 Z	3/8 yard
Fabric H:	SOUH 4427 G	SOUH 4427 G	3/8 yard
Fabric I:	SOUH 4427 R	SOUH 4427 R	1 1/4 yards
Fabric J:	SOUH 4424 R	SOUH 4426 MU	1/2 yard
Fabric K:	SOUH 4422 G	SOUH 4422 MU	1 1/4 yards
Backing:	SOUH 4422 G	SOUH 4422 MU	5 3/8 yards
Batting			83" x 94"



Cutting Instructions:

Please read all instructions carefully before beginning. Strips are cut across the width of fabric (perpendicular to selvages) unless otherwise stated. All seams are sewn with a 1/4" seam unless otherwise stated. Label all pieces.

From Fabric A:

1. Cut two 2 1/2" strips. Subcut four 2 1/2" squares, four 2 1/2" x 4 1/2" and four 2 1/2" x 6 1/2" rectangles. (Pieced Blocks)
2. Cut one 3" strip. Subcut eight 3" squares. (Pieced Blocks)
3. Cut one 1 1/2" strip. Subcut twelve 1 1/2" squares. (Cornerstones)

From Fabric B:

1. Cut three 2 1/2" strips. Subcut six 2 1/2" squares, six 2 1/2" x 4 1/2" and six 2 1/2" x 6 1/2" rectangles. (Pieced Blocks)
2. Cut one 3" strip. Subcut twelve 3" squares. (Pieced Blocks)
3. From leftover fabric, cut eight 1 1/2" squares. (Cornerstones)

From Fabric C:

1. Cut four 2 1/2" strips. Subcut ten 2 1/2" squares, ten 2 1/2" x 4 1/2" and ten 2 1/2" x 6 1/2" rectangles. (Pieced Blocks)
2. Cut two 3" strips. Subcut twenty 3" squares. (Pieced Blocks)

From Fabric D:

1. Cut seventeen 2 1/2" strips. Subcut two hundred seventy 2 1/2" squares. (Pieced Blocks)

2. Cut two 10 1/2" strips. Subcut forty-nine 1 1/2" x 10 1/2" rectangles. (Sashing)
3. Cut seven 4 1/2" strips. Piece strips and subcut two 4 1/2" x 62 1/2" and two 4 1/2" x 65 1/2" strips. (Inner Border #1)
4. Cut eight 1 1/2" strips. Piece strips and subcut two 1 1/2" x 67 1/2" and two 1 1/2" x 76 1/2" strips. (Inner Border #3)
5. Cut nine strips. Sub cut one hundred and twenty 3" squares. (Pieced Blocks)

From Fabric E:

1. Cut three 2 1/2" strips. Subcut eight 2 1/2" squares, eight 2 1/2" x 4 1/2" and eight 2 1/2" x 6 1/2" rectangles. (Pieced Blocks)
2. Cut two 3" strips. Subcut sixteen 3" squares. (Pieced Blocks)

From Fabric F:

1. Cut four 2 1/2" strips. Subcut ten 2 1/2" squares, ten 2 1/2" x 4 1/2" and ten 2 1/2" x 6 1/2" rectangles. (Pieced Blocks)
2. Cut two 3" strips. Subcut twenty 3" squares. (Pieced Blocks)

From Fabric G:

1. Cut three 2 1/2" strips. Subcut six 2 1/2" squares, six 2 1/2" x 4 1/2" and six 2 1/2" x 6 1/2" rectangles. (Pieced Blocks)
2. Cut one 3" strip. Subcut twelve 3" squares. (Pieced Blocks)

From Fabric H:

1. Cut three 2 1/2" strips. Subcut six 2 1/2" squares, six 2 1/2" x 4 1/2" and six 2 1/2" x 6 1/2" rectangles. (Pieced Blocks)

- Cut one 3" strip. Subcut twelve 3" squares. (Pieced Blocks)

From Fabric I:

- Cut four 2 1/2" strips. Subcut ten 2 1/2" squares, ten 2 1/2" x 4 1/2" and ten 2 1/2" x 6 1/2" rectangles. (Pieced Blocks)
- Cut two 3" strips. Subcut twenty 3" squares. (Pieced Blocks)
- Cut ten 2 1/4" strips for binding.

From Fabric J:

- Cut seven 2" strips. Piece strips and subcut two 2" x 65 1/2" and two 2" x 73 1/2" strips. (Inner Border #2)

From Fabric K:

- Cut eight 4 1/2" strips. Piece strips and subcut two 4 1/2" x 75 1/2" and two 4 1/2" x 78 1/2" strips. (Outer Border)

Piecing Instructions:

Pieced Blocks

- Draw a diagonal line on the wrong side of one 3" D square. Place square, right sides together, on one 3" Fabric square. Sew 1/4" away from the left and right sides of the drawn line. Cut along drawn line to yield two half-square triangle (HST) units. Align diagonal seam of HST units against 45 degree line on quilting ruler, trim HST units to measure 2 1/2" x 2 1/2" raw edge to raw edge. Make a total of eight HST units (Figure 1).



Figure 1 **Make 8 HST units.**

- Draw a diagonal line on the wrong side of one 2 1/2" D square. Place square, right sides together at a corner of one 2 1/2" x 6 1/2" Fabric rectangle. Sew on drawn line. Trim 1/4" away from sewn line. Open and reveal D corner triangle. Repeat with another 2 1/2" D square at the opposite corner of the same Fabric rectangle, noting seam orientation. Make a total of two units.
- Sew together two 2 1/2" D squares, two HST units and one 2 1/2" Fabric square to make a row unit. Make a total of two row units (Figure 2).

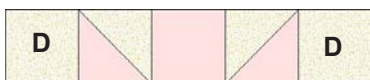


Figure 2 **Make 2.**

- Sew two HST units to the opposite short sides of one unit made in step 2 to make a row unit. Make a total of two row units (Figure 3).



Figure 3 **Make 2.**

- Sew two 2 1/2" x 4 1/2" Fabric rectangles to the opposite sides of one 2 1/2" D square to make a row unit (Figure 4).



Figure 4 **Make 2.**

- Sew together row units to make one pieced block (Figure 5).

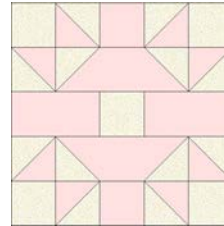


Figure 5

- Make a total number of blocks for the following Fabrics:

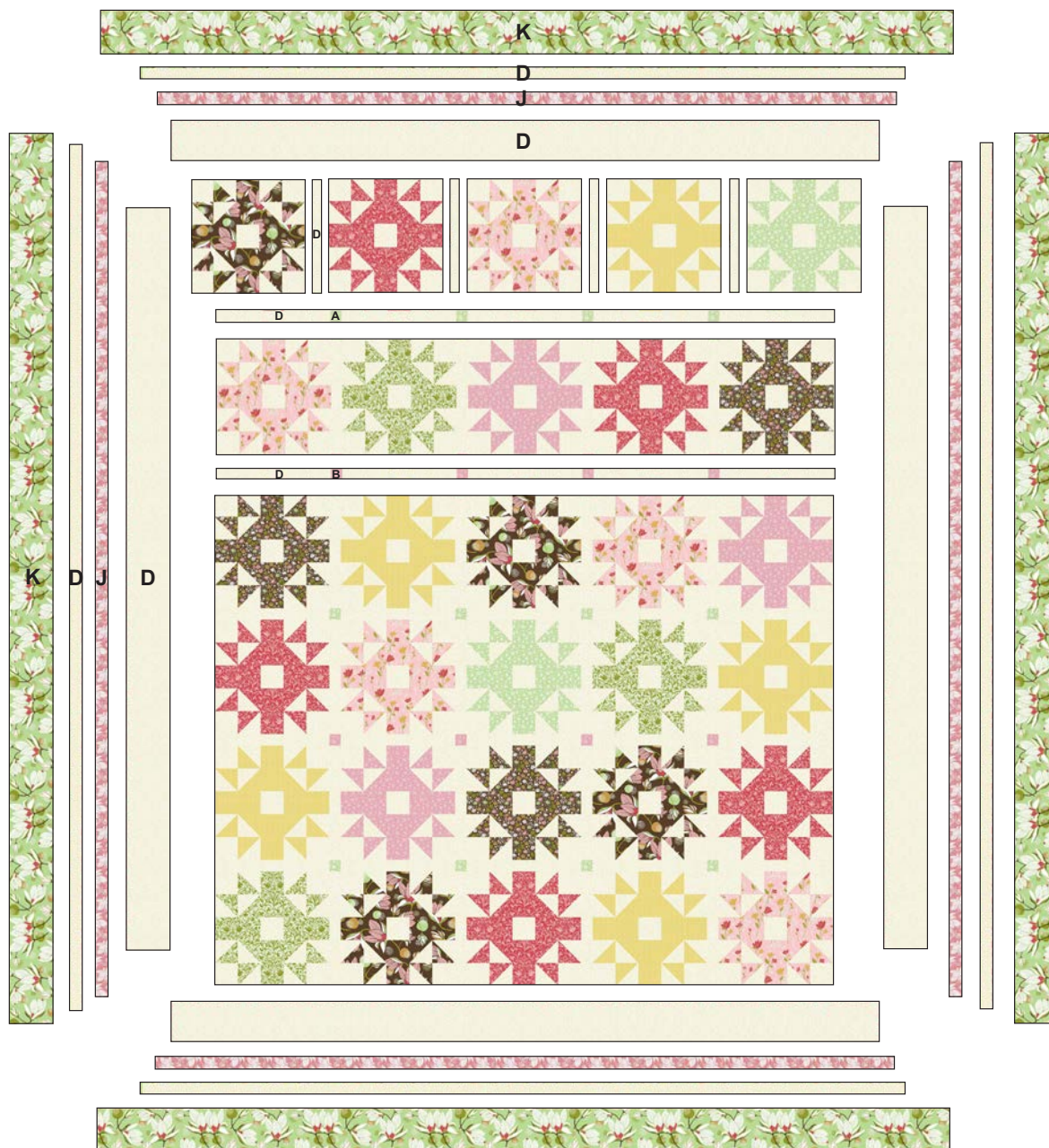
Fabric A 2 blocks	Fabric B 3 blocks	Fabric C 5 blocks	Fabric E 4 blocks
Fabric F 5 blocks	Fabric G 3 blocks	Fabric H 3 blocks	Fabric I 5 blocks

Quilt Assembly:

- Pieced rows. Refer to quilt diagram for block placement guide, arrange and sew together five pieced blocks and four 1 1/2" x 10 1/2" D sashing rectangles to make a pieced row. Make a total of (6) pieced rows..
- Pieced sashing rows. Arrange and sew together five 1 1/2" x 10 1/2" D rectangles and four 1 1/2" Fabric cornerstone squares to make a pieced sashing rows. Make three pieced sashing rows with Fabric A cornerstones. Make two pieced sashing rows with Fabric B cornerstones.
- Sew together pieced rows and pieced sashing rows to complete quilt center.
- Inner border #1. Sew two 4 1/2" x 65 1/2" D strips to the left and right sides of quilt center, followed by two 4 1/2" x 62 1/2" D strips to the top and bottom of quilt center.
- Inner border #2. Border Option Dependent. Sew two 2" x 73 1/2" J strips to the left and right sides of quilt center, followed by two 2" x 65 1/2" J strips to the top and bottom of quilt center.
- Inner border #3. Sew two 1 1/2" x 76 1/2" D strips to the left and right sides of quilt center, followed by two 1 1/2" x 67 1/2" D strips to the top and bottom of quilt center.
- Outer border. Border Option Dependent. Sew two 4 1/2" x 78 1/2" K strips to the left and right sides of quilt center, followed by two 4 1/2" x 75 1/2" K strips to the top and bottom of quilt center to complete quilt top.

Finishing:

1. Cut backing yardage in half and remove selvages from one side of each piece. With right sides together, sew these edges together with 1/2" seam. Press seam open. Trim backing to 84" x 94".
2. Layer quilt top, batting, and backing. Baste layers together.
3. Quilt as desired.
4. Trim layers even with quilt top squaring corners.
5. Join 2 1/4" I binding strips with diagonal seams. Press seams open. Attach binding to quilt using your favorite method.
6. Make a label and sew to the back of the quilt.



Quilt Diagram

Southern Hospitality

Fabric Collection by Heather Dutton
of Hang Tight Studio for P&B Textiles



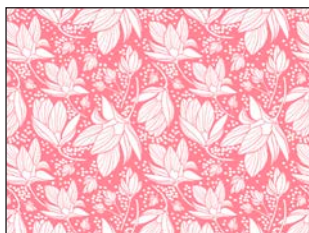
SOUH 4422 G*†



SOUH 4422 MU*†



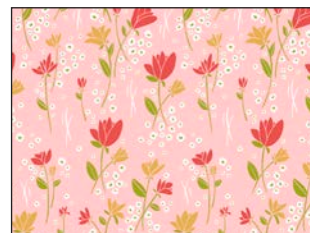
SOUH 4423 MU



SOUH 4424 R*



SOUH 4424 Y



SOUH 4425 P*



SOUH 4425 Z



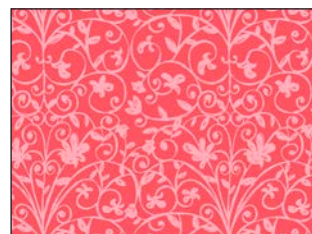
SOUH 4426 MU*



SOUH 4426 Z*



SOUH 4427 G*



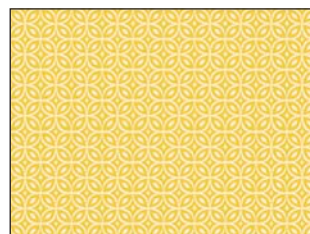
SOUH 4427 R*



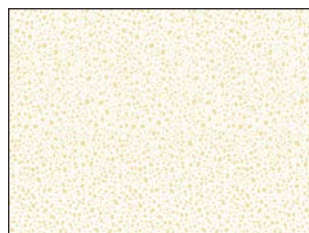
WHIM 4410 G*



WHIM 4410 P*



WHIM 4413 Y*



WHIM 4415 LY*



*Fabrics used in quilt.

†Backing