

Southern Hospitality

Quilt Design by Wendy Sheppard



Quilt size: approximately 64" x 79"

Featuring fabrics from
Southern Hospitality by Heather Dutton
of Hang Tight Studio for P&B Textiles



P&B Textiles • pbtex.com • 800-351-9087 • 208 Clock Tower Square, Portsmouth, RI 02871

Southern Hospitality

Fabric collection by Heather Dutton of Hang Tight Studio for P&B Textiles

Quilt designed by Wendy Sheppard

Skill level: Advanced Beginner • Finished Quilt Size: approximately 64" x 79" • Finished Block Size: approximately 7" x 10"

Quilt Yardages:

Fabric A: RAM7 727 W	3 3/4 yards
Fabric B: WHIM 4405 LS	3/8 yard
Fabric C: WHIM 4410 P	1/4 yard
Fabric D: WHIM 4403 Y	1/8 yard
Fabric E: SOUH 4422 G	3/8 yard
Fabric F: SOUH 4422 MU	1 yard
Fabric G: SOUH 4423 MU	3/8 yard
Fabric H: SOUH 4424 R	1/4 yard
Fabric I: SOUH 4424 Y	3/8 yard
Fabric J: SOUH 4425 P	1/3 yard
Fabric K: SOUH 4425 Z	1/4 yard
Fabric L: SOUH 4426 Z	1/4 yard
Fabric M: SOUH 4427 G	1/4 yard
Fabric N: SOUH 4427 R	1 yard
Backing: SOUH 4422 G suggested	5 yards
Batting	72" x 87"

Cutting Instructions:

Please read all instructions carefully before beginning. Strips are cut across the width of fabric (perpendicular to selvages) unless otherwise stated. All seams are sewn with a 1/4" seam unless otherwise stated. Label all pieces.

From Fabric A:

1. Cut three 1" strips. Subcut thirty-six 1" squares and eighteen 1" x 2 1/2" rectangles. (Pieced Block A)
2. Cut twenty-three 1 1/2" strips. Subcut one hundred eight 1 1/2" squares, eighteen 1 1/2" x 4 1/2", eighteen 1 1/2" x 7 1/2" and thirty-six 1 1/2" x 8 1/2" rectangles. (Pieced Block A)
3. Cut two 1" strips. Subcut thirty 1" squares and fifteen 1" x 2 1/2" rectangles. (Pieced Block B)
4. Cut twelve 1 1/2" strips. Subcut seventy-five 1 1/2" squares, fifteen 1 1/2" x 3 1/2", fifteen 1 1/2" x 7 1/2" and fifteen 1 1/2" x 8 1/2" rectangles. (Pieced Block B)
5. Cut two 3" strips. Subcut fifteen 3" x 4 1/2" rectangles. (Pieced Block B)
6. Cut one 4" strip. Subcut fifteen 2 1/2" x 4" rectangles. (Pieced Block B)
7. Cut seven 2 1/2" strips. Piece strips and subcut five 2 1/2" x 49 1/2" strips. (Sashing Strips)
8. Cut two 4" strips. Subcut four 4" x 10 1/2" rectangles. (Patch Blocks)
9. Cut two 1 1/2" strips. Piece strips and subcut one 1 1/2" x 53 1/2" strip. (Inner Border #1)
10. Cut five 2 1/2" strips. Piece strips and subcut one 2 1/2" x 53 1/2" and two 2 1/2" x 65 1/2" strips. (Inner Border #1)

11. Cut seven 2" strips. Piece strips and subcut two 2" x 58 1/2" and two 2" x 70 1/2" strips. (Inner Border #2)
12. Cut one 2" strip. Subcut fifteen 2" x 2 1/2" rectangles. (Pieced Block B)

From Fabric B:

1. Cut seven 1 1/2" strips. Piece strips and subcut five 1 1/2" x 49 1/2" strips. (Sashing Strips)

From Fabric C:

1. Cut three 1 1/2" strips. Subcut thirteen 1 1/2" x 6 1/2" rectangles. (Pieced Blocks A & B)

From Fabric D:

1. Cut one 1 1/2" strips. Subcut five 1 1/2" x 6 1/2" rectangles. (Pieced Block A)

From Fabric E:

1. Cut two 4 1/2" strips. Subcut five 4 1/2" x 8 1/2", ten 1" x 1 1/2" and five 1" x 2 1/2" rectangles. (Pieced Block A)

From Fabric F:

1. Cut one 1" strip. Subcut eight 1" x 1 1/2" and four 1" x 2 1/2" rectangles. (Pieced Block A)
2. Cut one 4 1/2" strip. Subcut four 4 1/2" x 8 1/2" rectangles. (Pieced Block A)
3. Cut seven 3 1/2" strips. Piece strips and subcut two 3 1/2" x 64 1/2" and two 3 1/2" x 73 1/2" strips. (Outer Border)

From Fabric G:

1. Cut seven 1 1/2" strips. Piece strips and subcut two 1 1/2" x 55 1/2" and two 1 1/2" x 68 1/2" strips. (Inner Border #2)

From Fabric H:

1. Cut one 1" strip. Subcut eight 1" x 1 1/2" and four 1" x 2 1/2" rectangles. (Pieced Block A)
2. Cut one 4 1/2" strip. Subcut four 4 1/2" x 8 1/2" rectangles. (Pieced Block A)

From Fabric I:

1. Cut two 4 1/2" strips. Subcut five 4 1/2" x 8 1/2", ten 1" x 2 1/2" and five 1" x 1 1/2" rectangles. (Pieced Block A)

From Fabric J:

1. Cut one 1" strip. Subcut ten 1" x 1 1/2" and five 1" x 2 1/2" rectangles. (Pieced Block B)
2. Cut one 1 1/2" strip. Subcut three 1 1/2" x 6 1/2" rectangles. (Pieced Block B)
3. Cut one 4 1/2" strip. Subcut five 4 1/2" x 6" rectangles. (Pieced Block B)

From Fabric K:

1. Cut one 4 1/2" strip. Subcut two 4 1/2" x 6", four 1" x 1 1/2" and two 1" x 2 1/2" rectangles. (Pieced Block B)

From Fabric L:

1. Cut one 4 1/2" strip. Subcut two 4 1/2" x 6", four 1" x 1 1/2", two 1" x 2 1/2" and three 1 1/2" x 6 1/2" rectangles. (Pieced Block B)

From Fabric M:

1. Cut one 4 1/2" strip. Subcut three 4 1/2" x 6", six 1" x 1 1/2" and three 1" x 2 1/2" rectangles. (Pieced Block B)

From Fabric N:

1. Cut two 1 1/2" strip. Subcut nine 1 1/2" x 6 1/2" rectangles. (Pieced Block A & B)
2. Cut one 4 1/2" strip. Subcut three 4 1/2" x 6", six 1" x 1 1/2", and three 1" x 2 1/2" rectangles. (Pieced Block B)
3. Cut nine 2 1/4" strips for binding.

Piecing Instructions:

Pieced Block A

1. Draw a diagonal line on the wrong side of one 1 1/2" A square. Place square, right sides together, at the bottom left corner of one 4 1/2" x 8 1/2" Fabric 1 rectangle. Sew on drawn line. Trim 1/4" away from sewn line. Open and press to reveal A corner triangle. Repeat with another 1 1/2" A square at the bottom right corner of the same Fabric 1 rectangle (Figure 1).
2. Sew together one 1" x 2 1/2" A rectangle and one 1" x 2 1/2" Fabric 1 rectangle along the long sides (Figure 2).
3. Draw a diagonal line on the wrong side of one 1" A square. Place square, right sides together, at a corner of one 1" x 1 1/2" Fabric 1 rectangle. Sew on drawn line. Trim 1/4" away from sewn line. Open and press to reveal A corner triangle (Figure 3).
4. Repeat step 3 to make a mirror-image unit, noting seam orientation (Figure 4).
5. Sew units from step 3 and 4 to the top and bottom of the unit made in step 2. Unit measures 1 1/2" x 3 1/2" unfinished (Figure 5).



Figure 1



Figure 2



Figure 3



Figure 4



Figure 5

6. Sew the 1 1/2" square to the top of the unit from step 5. Sew the 1 1/2" x 4 1/2" rectangle to the bottom of the unit from step 5 (Figure 6).
7. Sew one 1 1/2" x 8 1/2" rectangle to the left of the unit from step 1. Sew the unit made in step 6 to the right side of the unit made in step 1. Sew

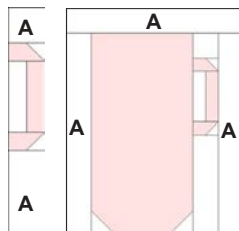


Figure 6

one 1 1/2" x 8 1/2" rectangle to the right side of the unit from step 6. Then sew one 1 1/2" x 7 1/2" rectangle to the top of this unit (Figure 7).

8. Draw a diagonal line on the wrong side of one 1 1/2" A square. Place square, right sides together, at a corner of one 1 1/2" x 6 1/2" Fabric 2 rectangle. Sew on drawn line. Trim 1/4" away from sewn line. Open and press to reveal A corner triangle. Repeat with another 1 1/2" A square at the opposite corner of the same Fabric 2 rectangle (Figure 8).
9. Add one 1 1/2" A square to the right of previously made unit (Figure 9).
10. Sew together units made in step 7 and 9 to complete (1) pieced block A (Figure 10).



Figure 8

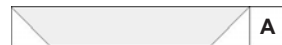


Figure 9

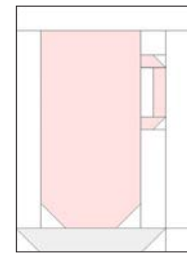


Figure 10

11. Make a total number of Pieced Block A in the following Fabric 1/Fabric 2 combinations:



Pieced Block B

1. Draw a diagonal line on the wrong side of one 1 1/2" A square. Place square, right sides together, at the bottom left corner of one 4 1/2" x 6" Fabric 1 rectangle. Sew on drawn line. Trim 1/4" away from sewn line. Open and press to reveal A corner triangle. Repeat with another 1 1/2" A square at the bottom right corner of the same Fabric 1 rectangle (Figure 11).
2. Add one 3" x 4 1/2" A rectangle to the top of previously made unit (Figure 12).



Figure 11



Figure 12

3. Sew together one 1" x 2 1/2" A rectangle and one 1" x 2 1/2" Fabric 1 rectangle along the long sides. (Figure 13)

- Draw a diagonal line on the wrong side of one 1" A square. Place square, right sides together, at a corner of one 1" x 1 1/2" Fabric 1 rectangle. Sew on drawn line. Trim 1/4" away from sewn line. Open and press to reveal A corner triangle (Figure 14).
- Repeat step 4 to make a mirror-image unit, noting seam orientation (Figure 15).
- Sew both units to the top and bottom of unit made in step 3. Unit measures 1 1/2" x 3 1/2" unfinished (Figure 16).

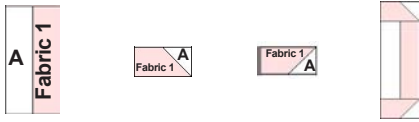


Figure 13 Figure 14 Figure 15 Figure 16

- Sew to the right side of the previous made unit in 1 1/2" x 3 1/2" A rectangle. Sew to the top of the same unit one 2 1/2" x 4" A rectangle and bottom of the same unit one 2" x 2 1/2" A rectangle (Figure 17).
- Sew together units made in step 2 and 7. Add one 1 1/2" x 8 1/2" A rectangle to the left, and one 1 1/2" x 7 1/2" A rectangle to the top (Figure 18).

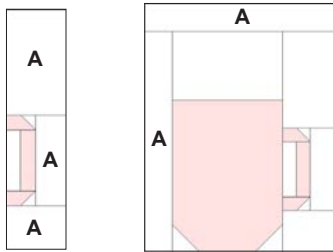


Figure 17 Figure 18

- Draw a diagonal line on the wrong side of one 1 1/2" x 1 1/2" A square. Place square, right sides together, at a corner of one 1 1/2" x 6 1/2" Fabric 2 rectangle. Sew on drawn line. Trim 1/4" away from sewn line. Open and press to reveal A corner triangle. Repeat with another 1 1/2" A square at the opposite corner of the same Fabric 2 rectangle (Figure 19).
- Add one 1 1/2" A square to the right of previously made unit (Figure 20).

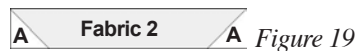
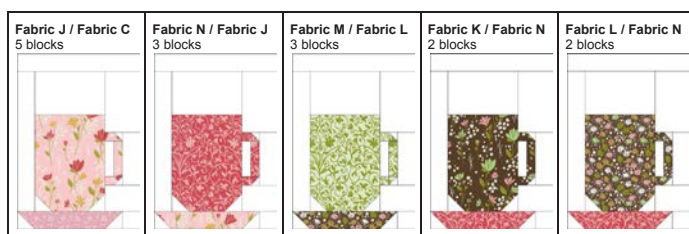


Figure 19



Figure 20

- Sew together units made in step 8 and 10 to complete (1) pieced block B.
- Make a total number of Pieced Block B in the following Fabric 1/Fabric 2 combinations:



Quilt Assembly:

- Pieced rows. Refer to quilt image/diagram for block placement guide, arrange and sew appropriate number of pieced blocks to make a pieced row.
Row 1, 3, 5: seven pieced blocks
Row 2, 4: six pieced blocks, two 4" x 10 1/2" A rectangles.
- Sew together pieced rows, five 1 1/2" x 49 1/2" B and five 2 1/2" x 49 1/2" A strips to complete quilt center.
- Inner border #1. Sew two 2 1/2" x 65 1/2" A strips to the left and right sides of quilt center, followed by one 2 1/2" x 53 1/2" A strip to the top of quilt center and one 1 1/2" x 53 1/2" A strip to the bottom of quilt center.
- Inner border #2. Sew two 1 1/2" x 68 1/2" G strips to the left and right sides of quilt center, followed by two 1 1/2" x 55 1/2" G strips to the top and bottom of quilt center.
- Inner border #3. Sew two 2" x 70 1/2" A strips to the left and right sides of quilt center, followed by two 2" x 58 1/2" A strips to the top and bottom of quilt center.
- Outer border. Sew two 3 1/2" x 73 1/2" F strips to the left and right sides of quilt center, followed by two 3 1/2" x 64 1/2" F strips to the top and bottom of quilt center to complete quilt top.

Finishing:

- Cut backing yardage in half and remove selvages from one side of each piece. With right sides together, sew these edges together with 1/2" seam. Press seam open. Trim backing to 84" x 94".
- Layer quilt top, batting, and backing. Baste layers together.
- Quilt as desired.
- Trim layers even with quilt top squaring corners.
- Join 2 1/4" N binding strips with diagonal seams. Press seams open. Attach binding to quilt using your favorite method.
- Make a label and sew to the back of the quilt.



Quilt Diagram

Southern Hospitality

Fabric Collection by Heather Dutton
of Hang Tight Studio for P&B Textiles



SOUH 4422 G*†



SOUH 4422 MU*



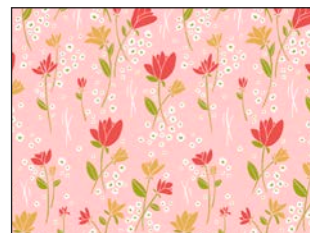
SOUH 4423 MU*



SOUH 4424 R*



SOUH 4424 Y*



SOUH 4425 P*



SOUH 4425 Z*



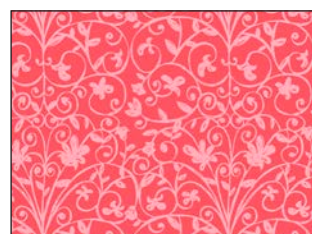
SOUH 4426 MU



SOUH 4426 Z*



SOUH 4427 G*



SOUH 4427 R*



RAM7 727 W*



WHIM 4405 LS*



WHIM 4410 P*



WHIM 4403 Y*

