

SET SAIL

Quilt Design by Wendy Sheppard



Quilt size: approximately 67" x 67"

*Featuring fabrics from
Set Sail by Jetty Home*



P&B Textiles • pbtex.com • 800-351-9087 • 208 Clock Tower Square, Portsmouth, RI 02871

SET SAIL

Fabric collection by Jetty Home

Quilt designed by Wendy Sheppard

Skill level: Confident Beginner • Finished Quilt Size: approximately 67" x 67"

Quilt Yardages:

Fabric A: SSAI 5249 LB	1 repeat/12 blocks
Fabric B: SSAI 5250 DB	1 1/8 yards
Fabric C: SSAI 5250 W	1/4 yard
Fabric D: SSAI 5251 B	3/8 yard
Fabric E: SSAI 5252 MU	1/4 yard
Fabric F: SSAI 5253 MU	1/4 yard
Fabric G: SSAI 5254 B	3/8 yard
Fabric H: SSAI 5254 NE	1/4 yard
Fabric I: SSAI 5254 S	3/8 yard
Fabric J: SSAI 5255 B	1/4 yard
Fabric K: SSAI 5255 DB	3/4 yard
Fabric L: SSAI 5255 NE	1/8 yard
Fabric M: SSAI 5255 W	2 3/8 yards
Fabric N: SORB 4984 LS	5/8 yard
Backing: SSAI 5250 DB suggested	4 1/4 yards
Batting	75" x 75"

Cutting Instructions:

Please read all instructions carefully before beginning. Strips are cut across the width of fabric (perpendicular to selvages) unless otherwise stated. All seams are sewn with a 1/4" seam unless otherwise stated. Label all pieces.

From Fabric A:

1. Cut twelve 5" squares, centering design.
(Frame Blocks)

From Fabric B:

1. Cut two 2 1/2" strips. Subcut four 2 1/2" x 6 1/2" and four 2 1/2" x 10 1/2" rectangles. (Frame Blocks)
2. Cut seven 4" strips. Piece strips and subcut two 4" x 60 1/2" and two 4" x 67 1/2" strips. (Outer Border)

From Fabric C:

1. Cut two 2 1/2" strips. Subcut four 2 1/2" x 6 1/2" and four 2 1/2" x 10 1/2" rectangles. (Frame Blocks)

From Fabric D:

1. Cut two 2 1/2" strips. Subcut four 2 1/2" x 6 1/2" and four 2 1/2" x 10 1/2" rectangles. (Frame Blocks)
2. Cut one 6" strip. Subcut two 6" squares. (Boat Blocks)

From Fabric E:

1. Cut one 6" strip. Subcut one 6" square. (Boat Blocks)

From Fabric F:

1. Cut one 6" strip. Subcut one 6" square. (Boat Blocks)

From Fabric G:

1. Cut four 2 1/2" strips. Subcut thirteen 2 1/2" x 8 1/2" rectangles. (Boat Blocks)

From Fabric H:

1. Cut two 2 1/2" strips. Subcut four 2 1/2" x 6 1/2" and four 2 1/2" x 10 1/2" rectangles. (Frame Blocks)

From Fabric I:

1. Cut two 2 1/2" strips. Subcut four 2 1/2" x 6 1/2" and four 2 1/2" x 10 1/2" rectangles. (Frame Blocks)
2. Cut one 6" strip. Subcut two 6" squares. (Boat Blocks)

From Fabric J:

1. Cut one 3" strip. Subcut thirteen 3" squares. (Boat Blocks)
2. Cut one 1 1/2" strip. Subcut sixteen 1 1/2" squares. (Cornerstones)

From Fabric K:

1. Cut four 1" strip. Subcut thirteen 1" x 8 1/2" rectangles. (Boat Blocks)
2. Cut eight 2 1/2" strips. (Binding)

From Fabric L:

1. Cut one 2 1/2" strip. Subcut thirteen 2 1/2" squares. (Boat Blocks)

From Fabric M:

1. Cut one 5" strip. Subcut twenty-four 1 1/4" x 5" rectangles. (Frame Blocks)
2. Cut one 6 1/2" strip. Subcut twenty-four 1 1/4" x 6 1/2" rectangles. (Frame Blocks)
3. Cut three 1 1/2" strips. Subcut thirteen 1 1/2" x 3" rectangles and thirteen 1 1/2" x 5 1/2" rectangles. (Boat Blocks)
4. Cut two 2 1/2" strips. Subcut twenty-six 2 1/2" squares. (Boat Blocks)
5. Cut one 5 1/2" strip. Subcut thirteen 2 1/2" x 5 1/2" rectangles. (Boat Blocks)
6. Cut two 6" strips. Subcut seven 6" squares. (Boat Blocks)
7. Cut one 7 1/2" strip. Subcut thirteen 3" x 7 1/2" rectangles. (Boat Blocks)
8. Cut one 10 1/2" strip. Subcut twenty-six 1 1/2" x 10 1/2" rectangles. (Boat Blocks)
9. Cut one 10 1/2" strip. Subcut twenty-six 1 1/2" x 10 1/2" rectangles. (Sashing)
10. Cut five 1 1/2" strips. Subcut fourteen 1 1/2" x 10 1/2" rectangles. (Sashing)
11. Cut six 2" strips. Piece strips and subcut two 2" x 54 1/2" and two 2" x 57 1/2" strips. (Inner Border #1)

From Fabric N:

1. Cut two 2 1/2" strips. Subcut four 2 1/2" x 6 1/2" and four 2 1/2" x 10 1/2" rectangles. (Frame Blocks)
2. Cut six 2" strips. Piece strips and subcut two 2" x 57 1/2" and two 2" x 60 1/2" strips. (Inner Border #2)

Piecing Instructions:

Frame Block

1. Sew two 1 1/4" x 5" M rectangles to the opposite sides of one 5" A square. Press. Sew two 1 1/4" x 6 1/2" M rectangles to the remaining opposite sides of the same A square. (Figure 1)

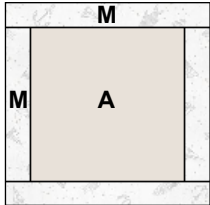


Figure 1

2. Sew two 2 1/2" x 6 1/2" Print rectangles to the opposite sides of Step 1 unit. Press. Sew two 2 1/2" x 10 1/2" Print rectangles to the remaining opposite sides of Step 1 unit to complete one frame block. Block measures 10 1/2" x 10 1/2" unfinished. (Figure 2)

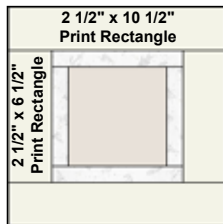


Figure 2

Make 1.
10 1/2" x 10 1/2" unfinished.

3. Make a total of two frame blocks for each of the following Prints:

Fabric B



Fabric C



Fabric D



Fabric H



Fabric I



Fabric N



Boat Block

1. Draw a diagonal line on the wrong side of one 3" J square. Place square, right sides together, at a corner of one 3" x 7 1/2" M rectangle. Sew on drawn line. Trim 1/4" away from sewn line, as shown. Add one 1 1/2" x 3" M rectangle to the bottom. (Figure 3)



Figure 3

2. Draw a diagonal line on the wrong side of one 2 1/2" L square. Place square, right sides together, at a corner of one 2 1/2" x 5 1/2" M rectangle. Sew on drawn line. Trim 1/4" away from sewn line. Open and press to reveal corner triangle. (Figure 4)



Figure 4

3. Draw a diagonal line on the wrong side of one 6" M square. Place square, right sides together, on one 6" Print square. Sew 1/4" away from both sides of drawn line. Cut along drawn line to yield two HST units. Open and press. Square and trim units to measure 5 1/2" x 5 1/2" unfinished. Block will use one HST unit. Sew Step 2 unit to the top, and one 1 1/2" x 5 1/2" M rectangle to the bottom of HST unit to make a column unit. (Figure 5)
4. Sew Step 1 and Step 3 units to the opposite long sides of one 1" x 8 1/2" K rectangle. (Figure 6)



Figure 5

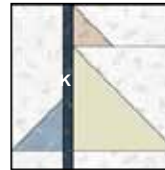


Figure 6

5. Draw a diagonal line on the wrong side of one 2 1/2" M square. Place square, right sides together, at a corner of one 2 1/2" x 8 1/2" G rectangle. Sew on draw line. Trim 1/4" away from sewn line. Open and press to reveal corner triangle. Repeat with another 2 1/2" M square at the opposite corner of the same G rectangle. Sew to the bottom of Step 4 unit. (Figure 7)
6. Sew two 1 1/2" x 10 1/2" M rectangles to the opposite long sides of Step 5 unit to complete one boat block. Block measures 10 1/2" x 10 1/2" unfinished. (Figure 8)
7. Make a total of number of blocks for the following Prints:

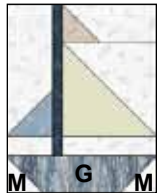


Figure 7

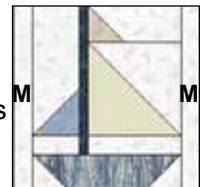


Figure 8 **Make 1.**
10 1/2" x 10 1/2" unfinished.



Fabric D
4 Blocks



Fabric E
2 Blocks



Fabric F
2 Blocks



Fabric I
3 Blocks



Fabric N
2 Blocks

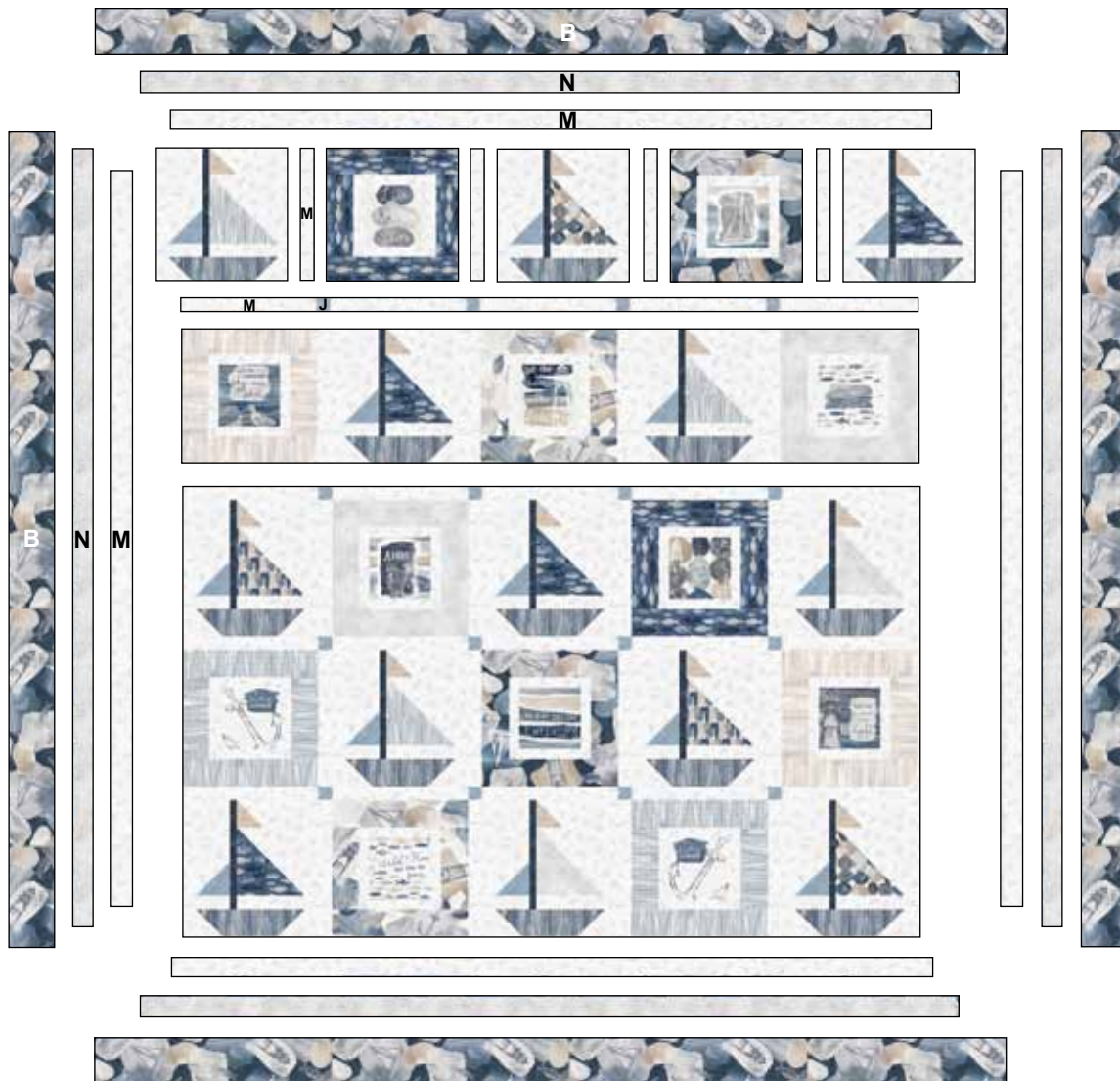
Quilt Assembly: Refer to Quilt Diagram

1. Refer to quilt image for block placement guide. Arrange and sew together five pieced blocks alternating with four 1 1/2" x 10 1/2" M rectangles to make a pieced row. Make a total of five pieced rows.
2. Sew together five 1 1/2" x 10 1/2" M rectangles, alternating with four 1 1/2" J squares to make a pieced sashing row. Make a total of four pieced sashing rows.
3. Sew together pieced rows, alternating with a pieced sashing row to complete quilt center.
4. Inner border #1. Sew two 2" x 54 1/2" M strips to the opposite sides of quilt center, followed by two 2" x 57 1/2" M strips to the remaining opposite sides of quilt center.
5. Inner border #2. Sew two 2" x 57 1/2" N strips to the opposite sides of quilt center, followed by two 2" x 60 1/2" N strips to the remaining opposite sides of quilt center.

6. Outer border. Sew two 4" x 60 1/2" B strips to the opposite sides of quilt center, followed by two 4" x 67 1/2" B strips to the remaining opposite sides of quilt center to complete quilt top.

Finishing:

1. Prepare backing using two widths and horizontal seam/s. Press seams open and trim to 75" x 75".
2. Layer runner, batting, and backing. Baste layers together.
3. Quilt as desired.
4. Trim layers even with runner top squaring corners.
5. Join eight 2 1/2" K binding strips with diagonal seams. Press seams open. Attach binding using your favorite method.
6. Make a label and sew to the back of the runner.



Quilt Diagram

SET SAIL

Fabric Collection by Jetty Home



SSAI 5249 LB*



SSAI 5250 W*



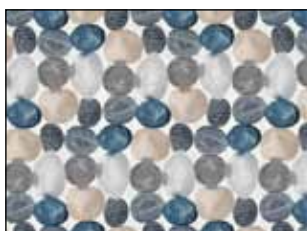
SSAI 5250 DB*†



SSAI 5251 B*



SSAI 5251 W



SSAI 5252 MU*



SSAI 5253 MU*



SSAI 5254 B*



SSAI 5254 NE*



SSAI 5254 S*



SSAI 5255 B*



SSAI 5255 DB*



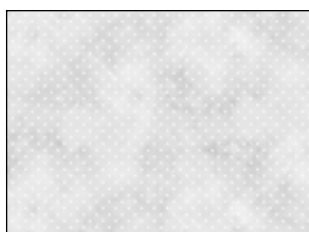
SSAI 5255 LS



SSAI 5255 NE*



SSAI 5255 W*



SORB 4984 LS*



P&B Textiles • pbtex.com • 800-351-9087 • 208 Clock Tower Square, Portsmouth, RI 02871

*Fabrics used in quilt.

†Backing