

# Serenity

Flora quilt by Stacey Day



Quilt size: approximately 59½" x 74½"

Featuring fabrics from the Serenity collection



P&B Textiles • pbtex.com • 800-351-9087 • 45 Washington Street, Pawtucket, RI 02860



# Serenity

Fabric collection by P&B Textiles

Flora quilt designed by Stacey Day for P&B Textiles 2017

Skill level: Confident Beginner • Finished Quilt Size: approximately 59½" x 74½"

Finished Block Size: 9" square

## Yardages:

Fabric A: <b>26670 – MUL 1</b> .....	2 yards
Fabric B: <b>26671 – BLU 1</b> .....	1/4 yard
Fabric C: <b>26671 – YEL 1</b> .....	1/8 yard
Fabric D: <b>26672 – MUL 1</b> .....	1 yard
Fabric E: <b>26673 – BEI 1</b> .....	1/2 yard
Fabric F: <b>26673 – BLU 1</b> .....	1/2 yard
Fabric G: <b>26673 – GRE 1</b> .....	7/8 yard
Fabric H: <b>26674 – BLU 1</b> .....	7/8 yard
Fabric I: <b>26676 – MDBLU 1</b> .....	5/8 yard
Fabric J: <b>26676 – MDGRE 1</b> .....	7/8 yard
Fabric K: <b>26676 – YEL 1</b> .....	1/2 yard
Backing: <b>26675 – GRE 1</b> .....	4 yards
Batting: .....	68" x 83"

## Cutting Instructions:

Please read all instructions carefully before beginning. Strips are cut across the width of fabric unless otherwise stated. All seams are sewn with a 1/4" seam unless otherwise stated. HST= Half Square Triangle, QST = Quarter Square Triangle, LOF = Length of Fabric, WOF = Width of Fabric

### From Fabric A (26670 – MUL 1):

1. Cut (2) 6 1/2" LOF strips.
2. Cut (6) 6 1/2" x remaining WOF strips.

### From Fabric B (26671 – BLU 1):

1. Fussy-cut (12) 2 3/4" squares with a flower centered in each square.

### From Fabric C (26671 – YEL 1):

1. Fussy-cut (6) 2 3/4" squares with a flower centered in each square.

### From Fabric D (26672 – MUL 1):

1. Cut (2) 14" strips, sub cut into (3) 14" squares. Cut twice on the diagonal into (12) QST. Discard 2.
2. Sub cut (2) 7 1/4" squares from remainder of 14" strip. Cut once on the diagonal into (4) HST.

### From Fabric E (26673 – BEI 1):

1. Cut (6) 2" strips.

### From Fabric F (26673 – BLU 1):

1. Cut (4) 2 3/4" strips, sub cut into (12) 2 3/4" x 5" rectangles and (12) 2 3/4" x 7 1/4" rectangles.

### From Fabric G (26673 – GRE 1):

1. Cut (12) 2" strips, sub cut into (48) 2" x 9 1/2" rectangles.

### From Fabric H (26674 – BLU 1):

1. Cut (1) 5 3/8" strip, sub cut into (6) 5 3/8" squares. Cut once on the diagonal into (12) HST.
2. Cut (7) 2 3/4" strips, sub cut into (18) 2 3/4" x 5" rectangles and (66) 2 3/4" squares.

### From Fabric I (26676 – MDBLU 1):

1. Cut (6) 2 3/4" strips, sub cut into (12) 2 3/4" x 9 1/2" rectangles and (12) 2 3/4" x 7 1/4" rectangles.

### From Fabric J (26676 – MDGRE 1):

1. Cut (1) 2" strip, sub cut into (17) 2" squares.
2. Cut (1) 3 3/8" strip, sub cut into (4) 3 3/8" squares. Cut twice on the diagonal into (16) QST. Discard 2.
3. Cut (8) 2 1/4" strips for binding.

### From Fabric K (26676 – YEL 1):

1. Cut (1) 5 3/8" strip, sub cut into (6) 5 3/8" squares. Cut once on the diagonal into (12) HST.
2. Cut (1) 5" strip, sub cut into (6) 5" squares.

### From Backing (26675 – GRE 1):

1. Cut (2) 68" strips for backing.

## Piecing Instructions:

1. Sew B and H 2 3/4" squares together in pairs. Press toward B. Sew H 2 3/4" x 5" rectangle to the top as shown. Press toward H. Trim to 5" square (Figure 1).

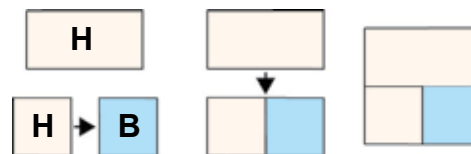


Figure 1 HB Unit Make 12.

2. Sew 2 3/4" H square to the end of the 5" F and 7 1/4" I rectangles, stitching diagonally from top left to bottom right as shown. Trim the seam allowance to 1/4" and press open (Figure 2).



Figure 2 HF and HI Units Make 12 of each.

- Sew 2 3/4" H square to the end of 7 1/4" F and 9 1/2" I rectangles, stitching diagonally from top right to bottom left as shown. Trim the seam allowance to 1/4" and press open (Figure 3).

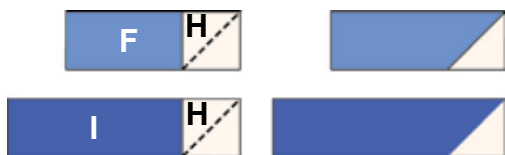


Figure 3 HF and HI Units Make 12 of each.

- Sew HB squares, HF and HI units together as shown to make (9) 9 1/2" A Blocks, pressing toward each added piece (Figure 4).



Figure 4 A Block Make 12.

- Sew 2 3/4" C and H squares together in pairs. Press toward C. Sew 2 3/4" x 5" H rectangle to the top as shown. Press toward H. Trim to 5" square (Figure 5).

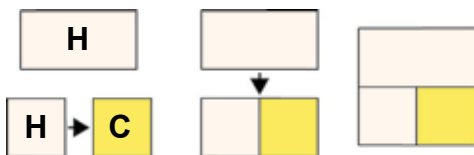


Figure 5 HC Unit Make 6.

- Sew H and K HST together. Press toward K. Trim to 5" square (Figure 6).



Figure 6 HK Unit Make 6.

- Sew HC squares, HK units, and 5" K squares together as shown to make (6) 9 1/2" B Blocks, pressing toward K for each seam (Figure 7).



Figure 7 B Block Make 6.

## Quilt Assembly:

- Sew D HST, D QST, G rectangles, J squares, J QST, A Blocks and B Blocks together in diagonal rows. Press all seams toward G rectangles. Sew the diagonal rows together to make the quilt top. Press toward the GJ rows (Figure 8).

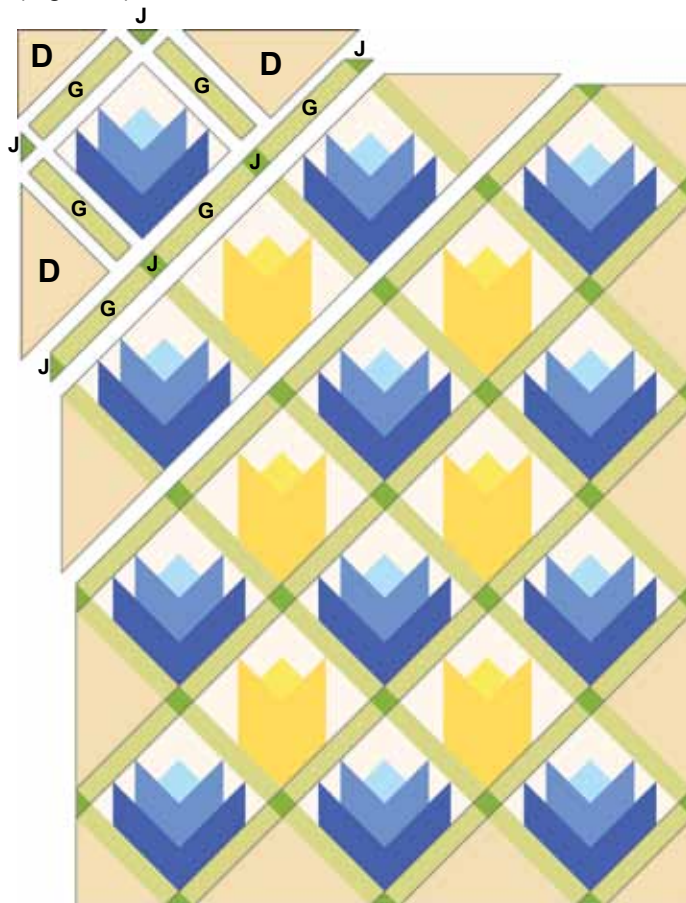


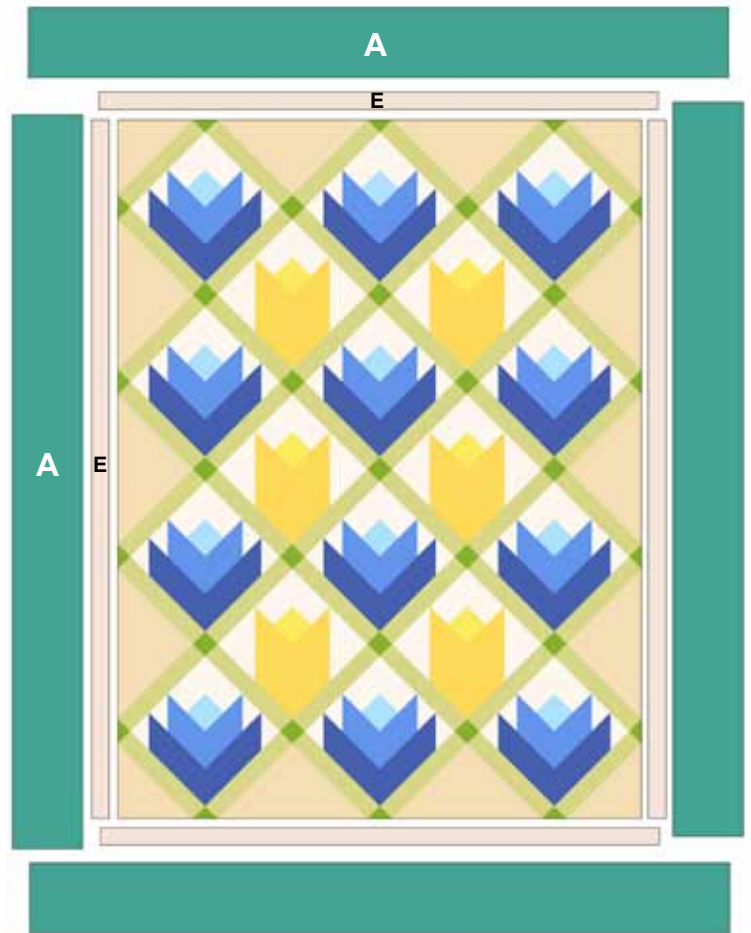
Figure 8

- Sew 2" E strips together end to end. Measure sides of the quilt and, using average measurement, cut border strips. Sew to each long side of the quilt. Press toward strips (Quilt Diagram).
- Measure top and bottom of the quilt and, using average measurement, cut border strips from remainder of pieced E strip. Sew to top and bottom of the quilt. Press toward strips (Quilt Diagram).

4. Measure long sides of quilt and, using average measurement, trim 6 1/2" x LOF A strips. Sew to each long side of quilt. Press toward strips.
5. Sew (6) 6 1/2" x remaining WOF A strips together end to end. Measure top and bottom of quilt and, using average measurement, cut border strips. Sew to top and bottom of quilt. Press toward strips to complete the top.

### *Finishing:*

1. Prepare backing with a horizontal seam to measure 68" x 83".
2. Layer backing, batting and quilt top. Baste layers together.
3. Quilt as desired.
4. Trim layers even with top.
5. Join (8) J3 binding strips with diagonal seams. Press seams open. Press strip in half lengthwise with wrong sides together to make double-fold binding. Sew binding to quilt using your favorite method.
6. Make a label and sew to back of the quilt.



*Quilt Diagram*

# Serenity

Fabric Collection by P&B Textiles



26670 – MUL 1\*



26672 – MUL 1\*



26671 – BLU 1\*



26671 – YEL 1\*



26673 – BEI1\*



26673 – BLU 1\*



26673 – GRE1\*



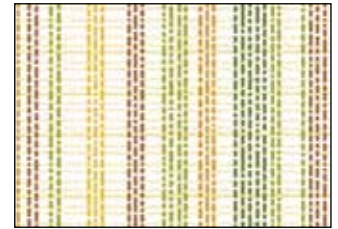
26674 – BLU 1\*



26674 – TAN 1



26675 – BLU 1



26675 – GRE 1\*\*



26676 – MDBLU1\*



26676 – MDGRE 1\*



26676 – YEL1\*

\*Fabrics used in quilt.

\*\* Suggested backing.

