

# Sedona

Storm Front Quilt Design by Stacey Day



Quilt size: approximately 51" square



Featuring fabrics from  
Sedona by P&B Textiles



P&B Textiles • [pbtex.com](http://pbtex.com) • 800-351-9087 • 208 Clock Tower Square, Portsmouth, RI 02871

# Sedona

Fabric collection by P&B Textiles

Storm Front quilt designed by Stacey Day

Skill level: Intermediate • Finished Quilt Size: approximately 51" square

## Yardages:

	Warm	Cool	
Fabric A:	SEDO 4094 SS .....	SEDO 4094 MU .....	2 3/8 yards
Fabric B:	SEDO 4095 K.....	SEDO 4095 RK.....	7/8 yard
Fabric C:	SEDO 4095 LS.....	SEDO 4096 SS .....	1 7/8 yards
Fabric D:	SEDO 4096 K.....	SEDO 4096 I .....	3/8 yard
Fabric E:	SEDO 4096 SB .....	SEDO 4095 GG.....	2/3 yard
Fabric F:	SEDO 4096 SS .....	SEDO 4096 G.....	7/8 yard
Backing:	SUE6 302 KS .....	SUED 300 D .....	3 1/4 yards
Batting	.....	.....	57" x 57"

## Cutting Instructions:

Please read all instructions carefully before beginning. Strips are cut across the width of fabric (perpendicular to selvages) unless otherwise stated. All seams are sewn with a 1/4" seam unless otherwise stated. Label all pieces. Tape templates together when needed before cutting. Figures use warm version of Storm Front.

### From Fabric A:

1. Cut two 18 1/4" strips; sub cut three 18 1/4" squares. Cut each twice on the diagonal to make twelve triangles.
2. Cut two 13" strips; sub cut twelve Template A.
3. Cut seven 2 1/4" strips, or enough bias strips to make 216" of binding.

### From Fabric B:

1. Cut two 10 1/2" strips; sub cut twelve Template B.
2. Cut two 5" strips; sub cut twelve Template D.

### From Fabric C:

1. Cut two 7 1/2" strips; sub cut twelve Template C.
2. Cut eighteen 2 1/2" strips; sub cut one hundred ninety-two 2 1/2" x 3 1/2" rectangles.

### From Fabric D:

1. Cut five 2" strips; sub cut sixty 2" x 3" rectangles.

### From Fabric E:

1. Cut nine 2 1/4" strips; sub cut sixty 2 1/4" x 5 1/2" rectangles.

### From Fabric F:

1. Cut eleven 2 1/4" strips; sub cut seventy-two 2 1/4" x 5 1/2" rectangles.

## Piecing Instructions:

1. Using your preferred method of paper piecing, using twelve Foundation 1 pieces, seventy-two 2 1/2" x 3 1/2" C rectangles and sixty 2" x 3" D rectangles, make twelve of Foundation 1 (Figure 1). Trim around the outside solid line and carefully remove the paper. Set aside.



Figure 1  
Make 12.

2. Using your preferred method of paper piecing, using twelve Foundation 2a pieces, sixty 2 1/2" x 3 1/2" C rectangles, thirty-six 2 1/4" x 5 1/2" E rectangles, and thirty-six 2 1/4" x 5 1/2" F rectangles, make twelve of Foundation 2a (Figure 2). Trim around the outside solid line and carefully remove the paper. Set aside.



Figure 2  
Make 12.

3. Using your preferred method of paper piecing, using twelve Foundation 2b pieces, sixty 2 1/2" x 3 1/2" C rectangles, twenty-four 2 1/4" x 5 1/2" E rectangles, and thirty-six 2 1/4" x 5 1/2" F rectangles, make twelve of Foundation 2b (Figure 3). Trim around the outside solid line and carefully remove the paper.



Figure 3  
Make 12.

- Sew Foundation 2a and 2b together as shown in Figure 4 to make twelve full arcs.

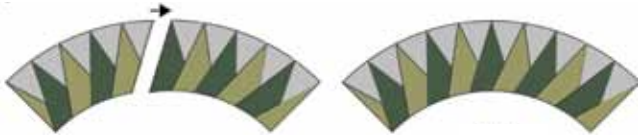


Figure 4  
Make 12.

- Sew one Fabric A Template A piece to the top of each Foundation 2 arc. Sew one Fabric B Template B piece to the bottom. Press towards the templates.
- Sew one Fabric C Template C piece to the bottom of each Foundation 1 arc. Sew one Fabric B Template D piece to the bottom of the Template C piece. Press towards Template D.
- Sew the Fabric B Template B side of the first unit to the top of the Foundation 1 piece of the second unit from the above

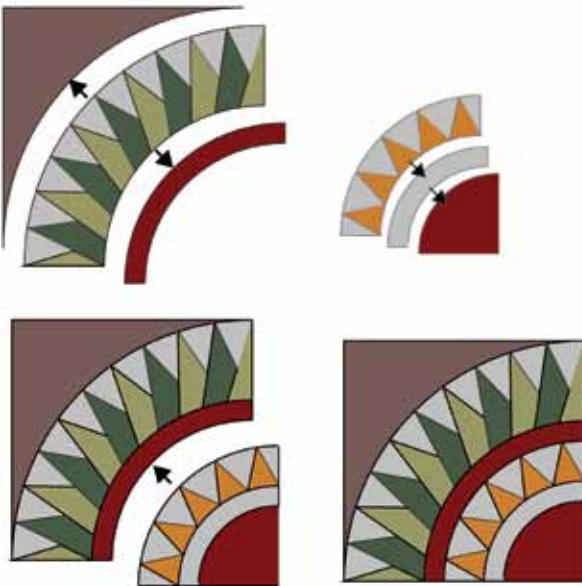


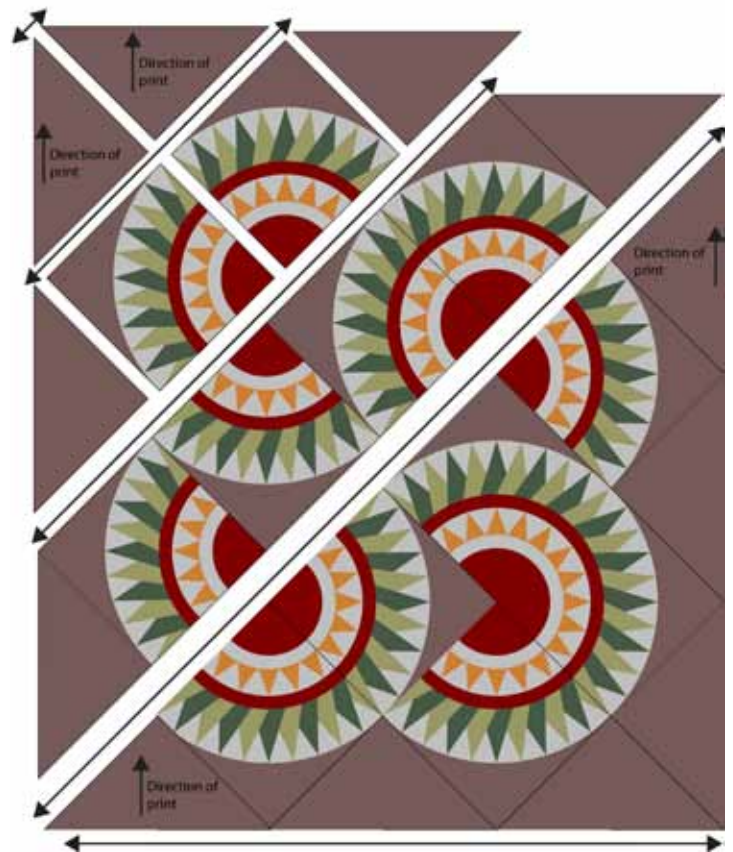
Figure 5  
Make 12.

steps (Figure 5). Press towards Template B. Trim and square to 12 1/2" x 12 1/2".

- Sew 18 1/4" A triangles and the finished blocks together in diagonal rows as shown, paying close attention to the directionality of the fabric and the orientation of each block (Quilt Diagram). Press seams open. Sew the diagonal rows together to make the quilt top.

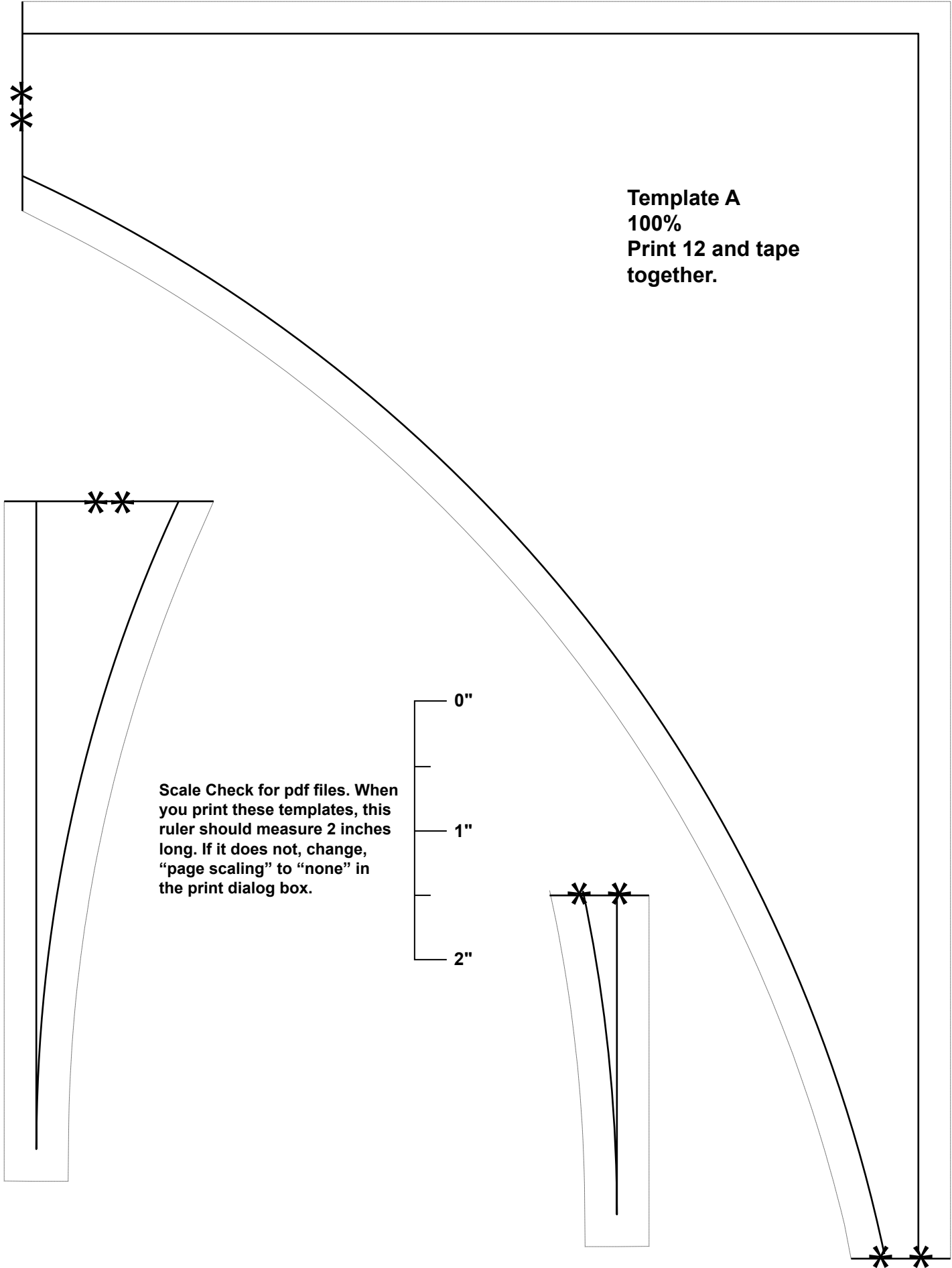
### Finishing:

- Prepare backing with a horizontal seam to measure 57" x 57". Press seam open.
- Layer quilt top, batting, and backing. Baste layers together.
- Quilt as desired.
- Trim layers even with quilt top.
- Join 2 1/4" A binding strips with diagonal seams. Press seams open. Attach binding to quilt using your favorite method.
- Make a label and sew to the back of the quilt.



Quilt Diagram

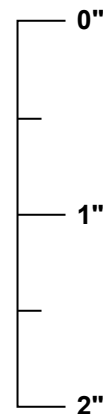
**Template A**  
**100%**  
**Print 12 and tape**  
**together.**



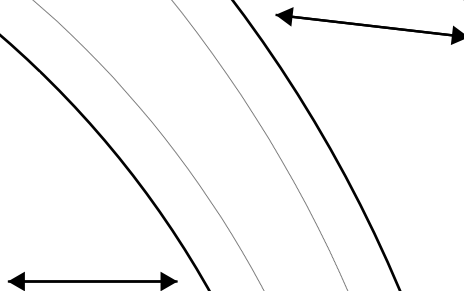
**Scale Check for pdf files. When you print these templates, this ruler should measure 2 inches long. If it does not, change, "page scaling" to "none" in the print dialog box.**

**Template B**  
**100%**  
**Print 12.**

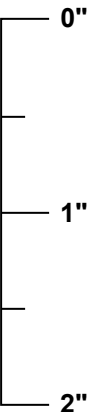
Scale Check for pdf files. When you print these templates, this ruler should measure 2 inches long. If it does not, change, "page scaling" to "none" in the print dialog box.



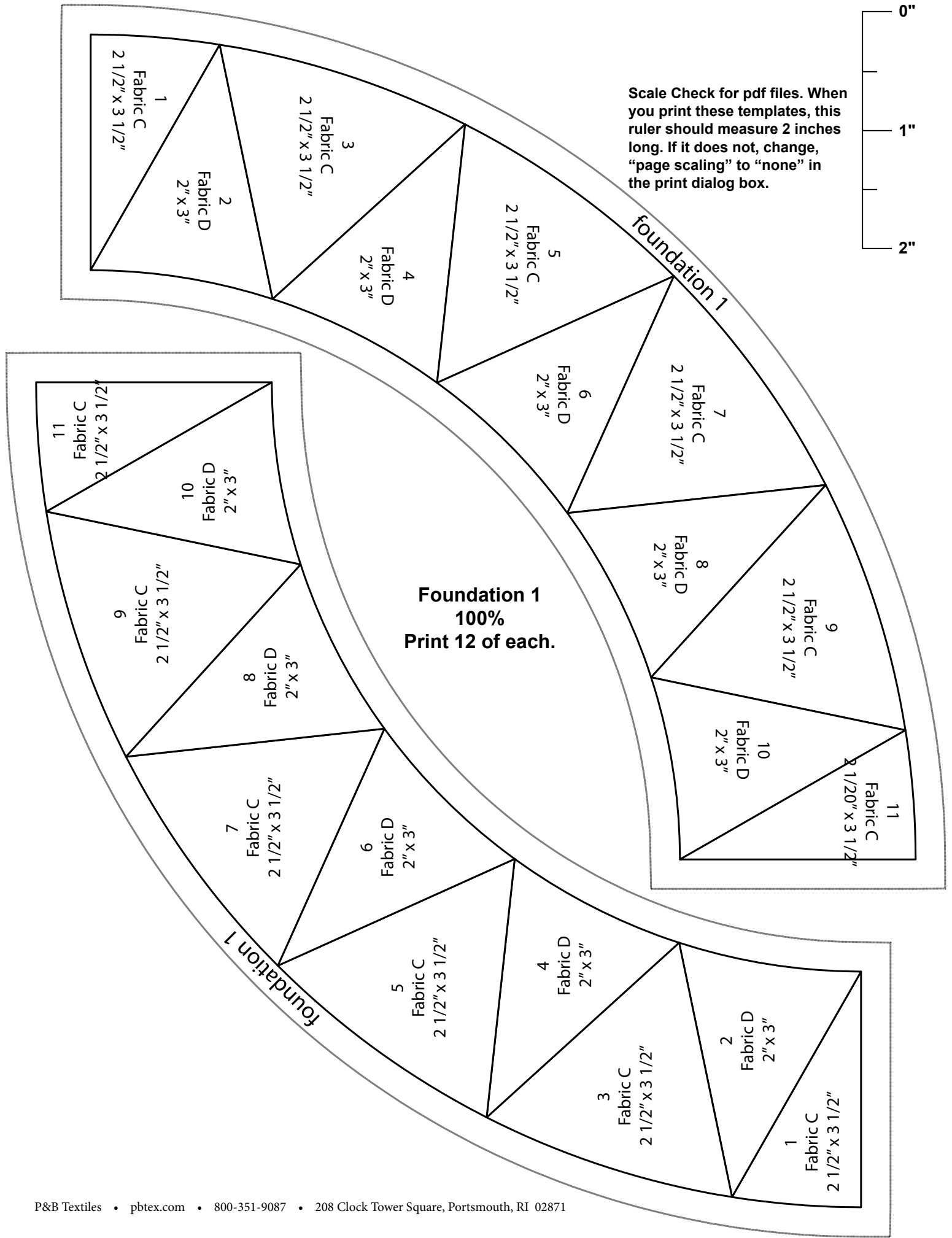
**Template C**  
**100%**  
**Print 12.**

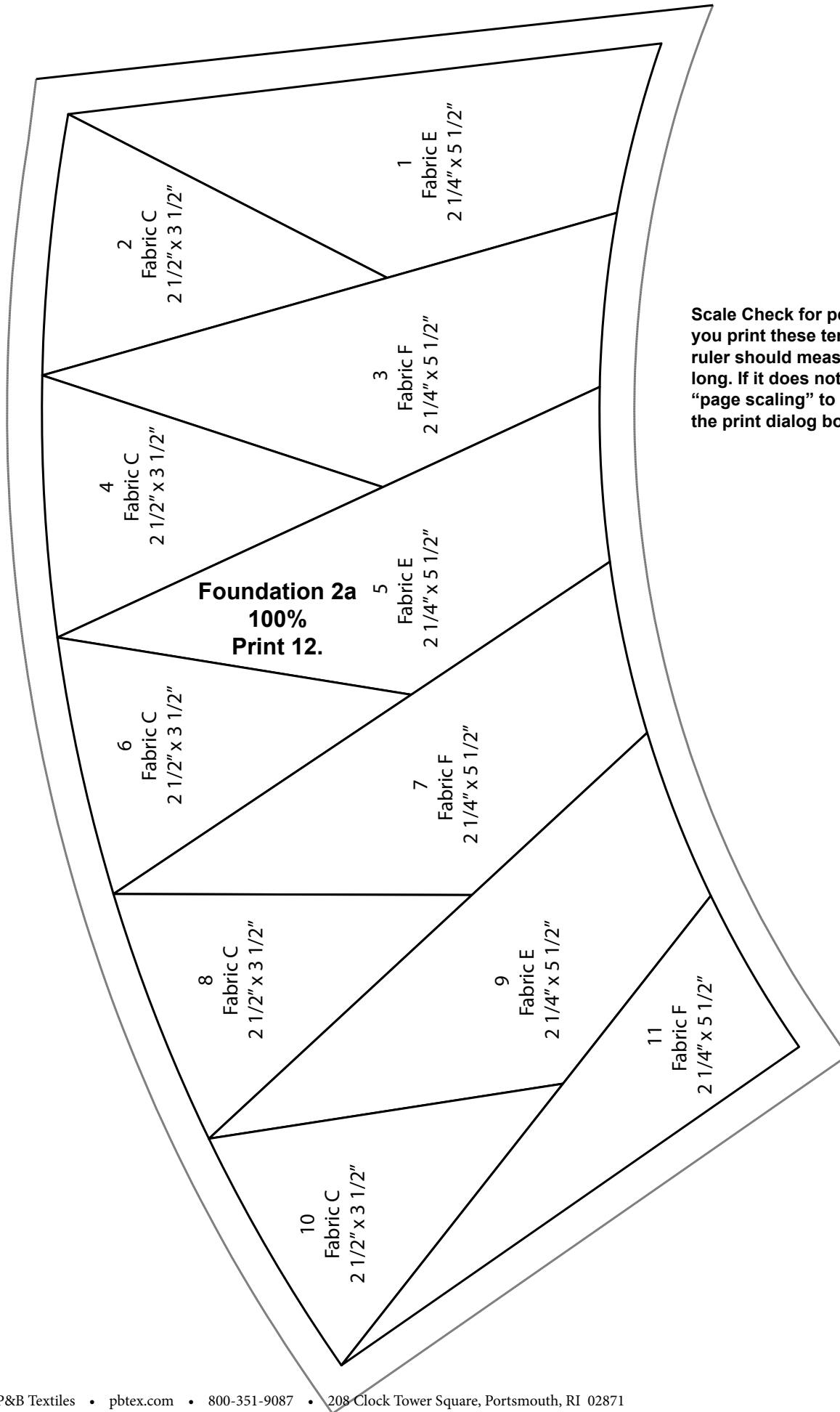


**Template D**  
**100%**  
**Print 12.**

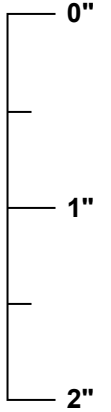


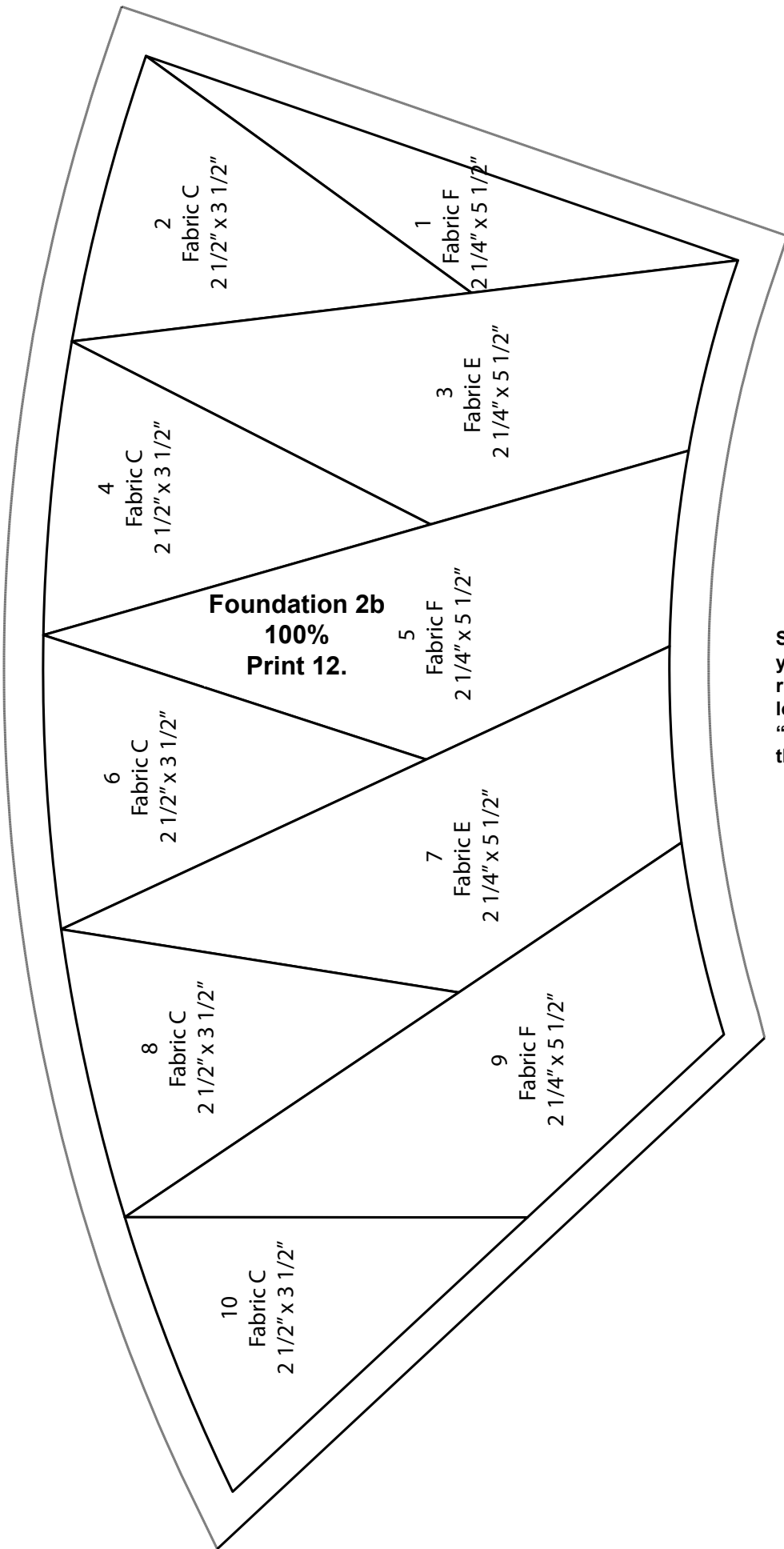
Scale Check for pdf files. When you print these templates, this ruler should measure 2 inches long. If it does not, change, "page scaling" to "none" in the print dialog box.



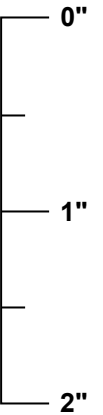


**Scale Check for pdf files. When you print these templates, this ruler should measure 2 inches long. If it does not, change, "page scaling" to "none" in the print dialog box.**





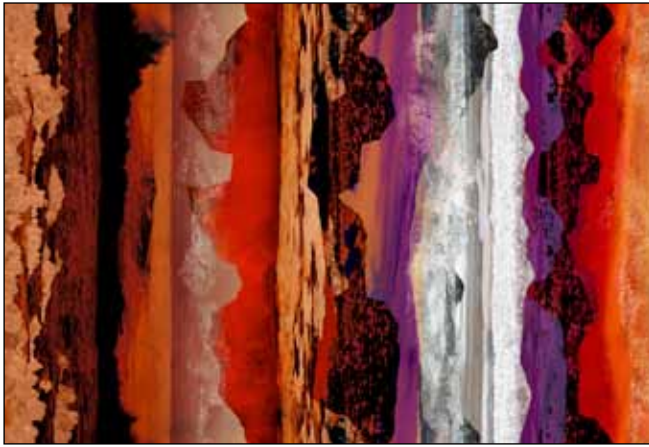
Scale Check for pdf files. When you print these templates, this ruler should measure 2 inches long. If it does not, change, "page scaling" to "none" in the print dialog box.



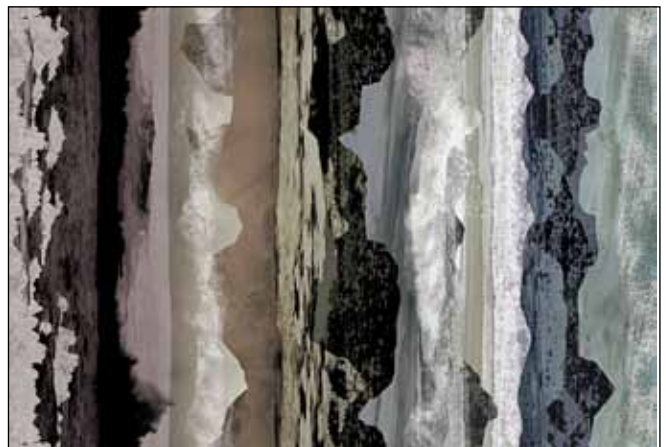


# Sedona

Fabric Collection  
by P&B Textiles



SEDO 4094 MU\*



SEDO 4094 SS\*



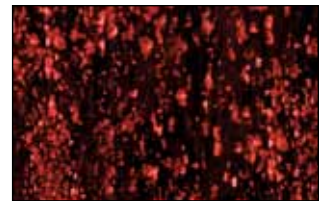
SEDO 4095 GG\*



SEDO 4095 K\*



SEDO 4095 LS\*



SEDO 4095 RK\*



SEDO 4096 G\*



SEDO 4096 I\*



SEDO 4096 K\*



SEDO 4096 SB\*



SEDO 4096 SS\*



SUE6 302 KS†



SUE6 300 D†

\*Fabrics used in quilt.  
†Backing