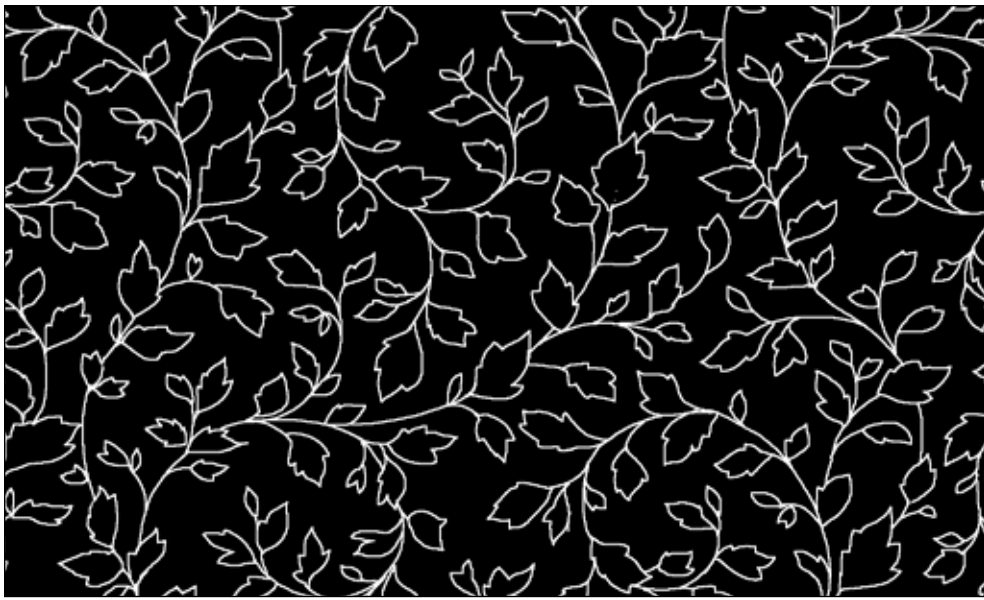


Salt & Pepper

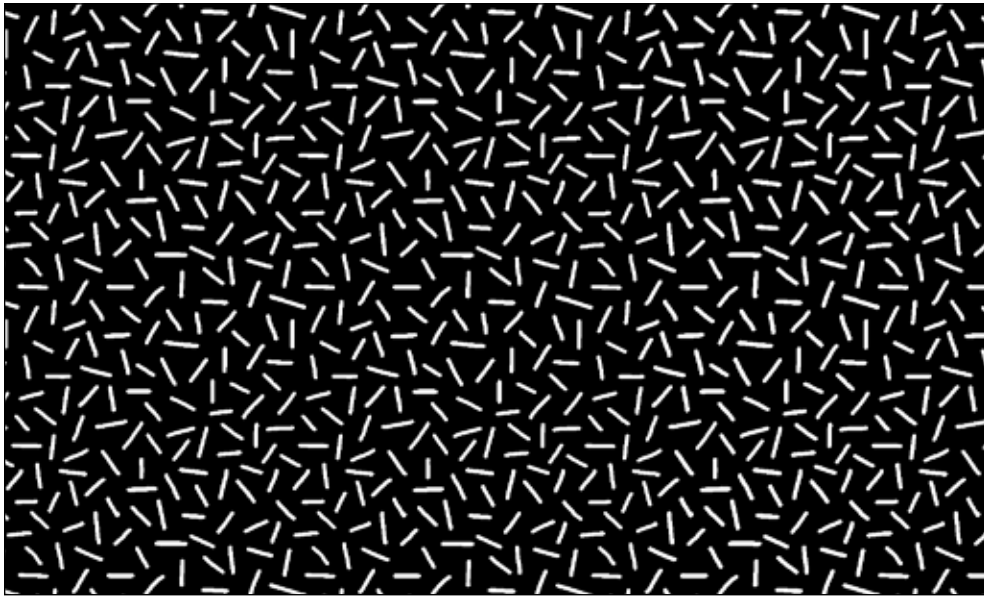




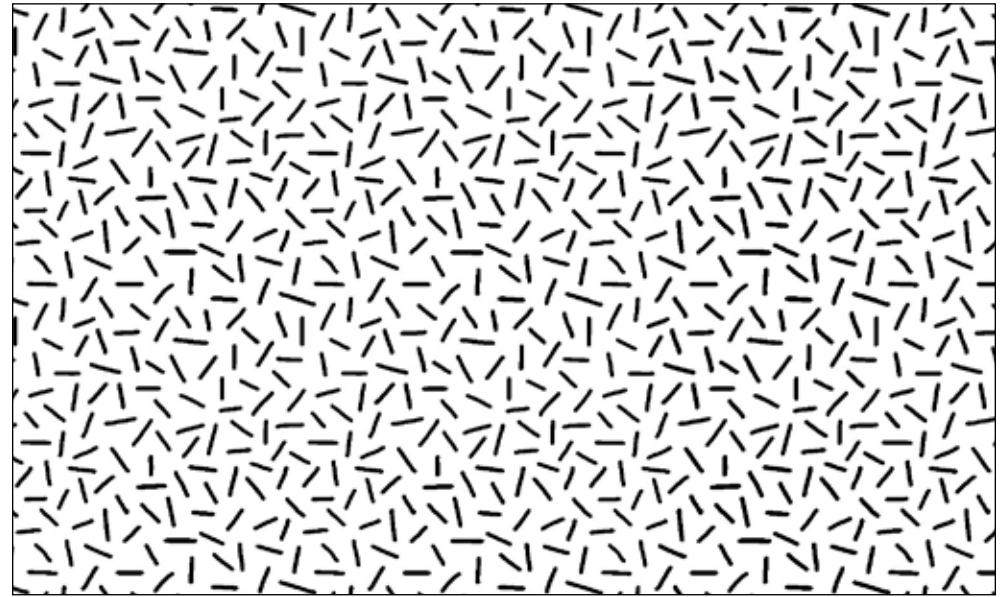
Style #RS&P
Pattern #4946 KW
100%



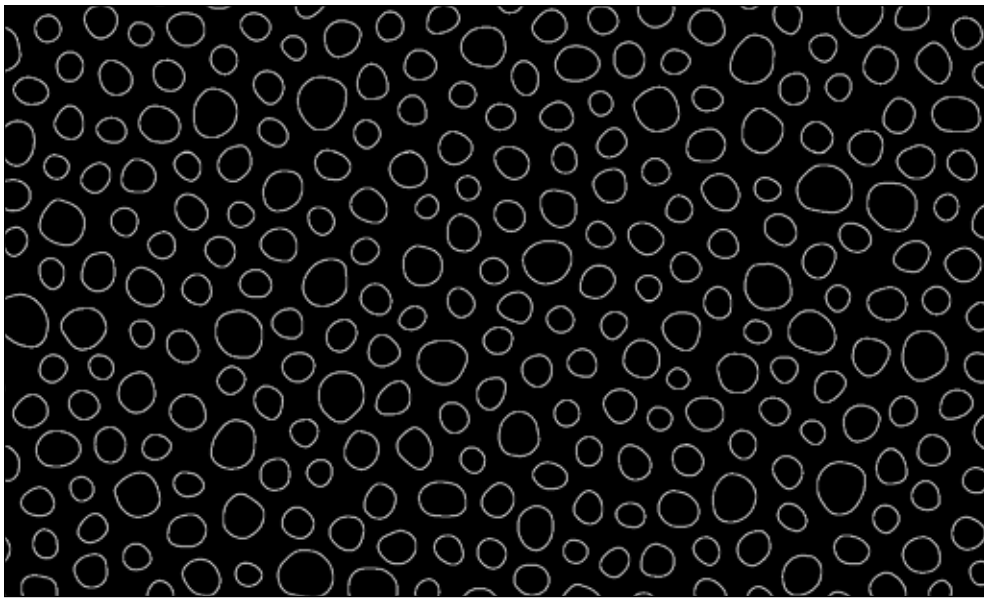
Style #RS&P
Pattern #4946 WK
100%



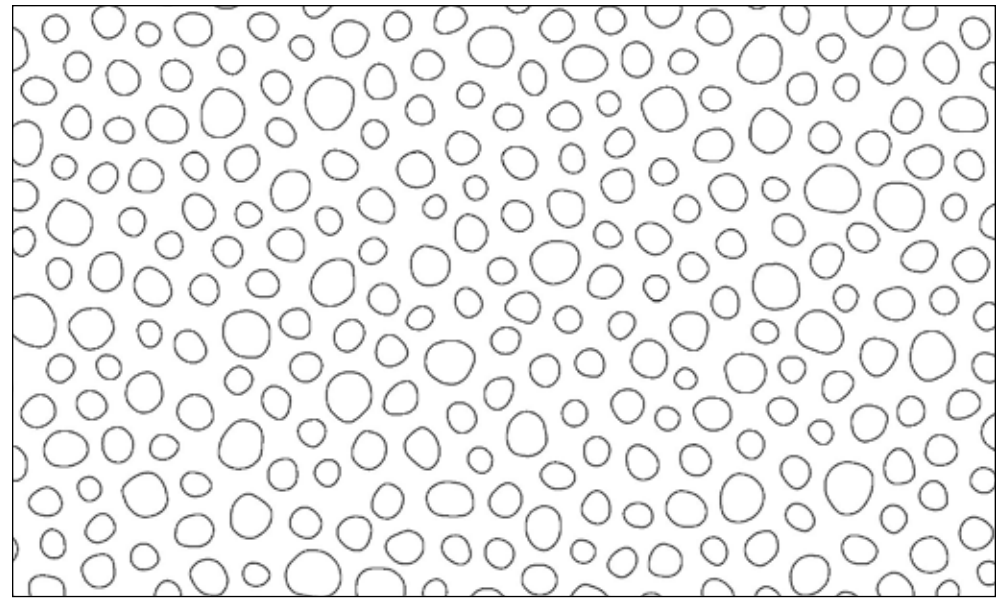
Style #RS&P
Pattern #4947 KW
100%



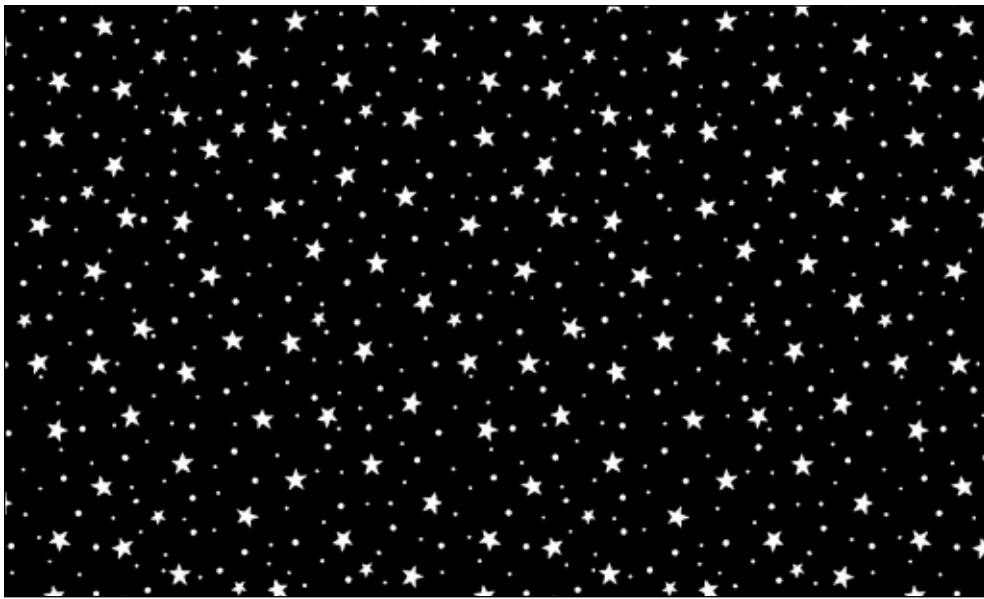
Style #RS&P
Pattern #4947 WK
100%



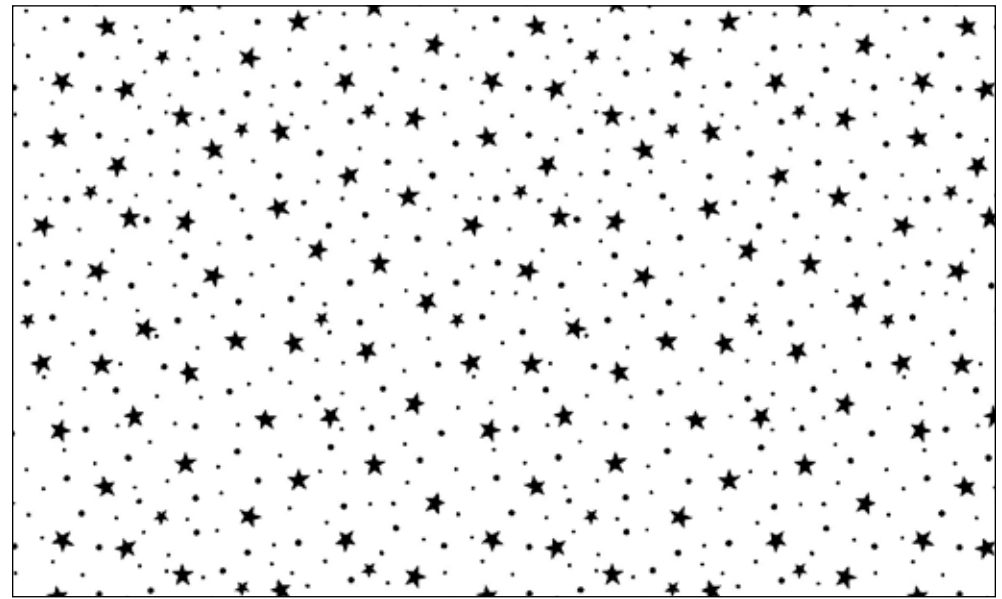
Style #RS&P
Pattern #4948 KW
100%



Style #RS&P
Pattern #4948 WK
100%



Style #RS&P
Pattern #4949 KW
100%



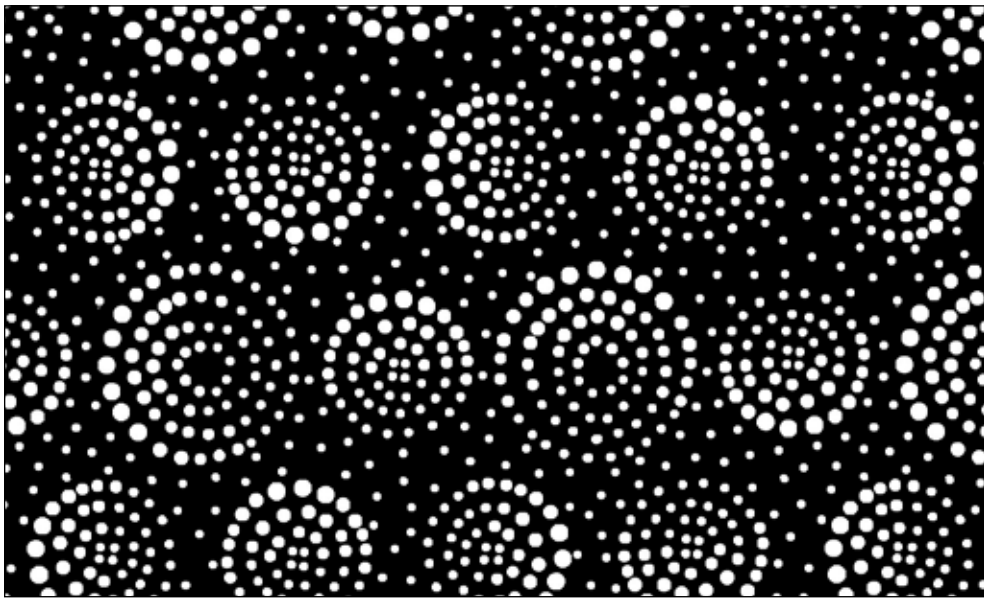
Style #RS&P
Pattern #4949 WK
100%



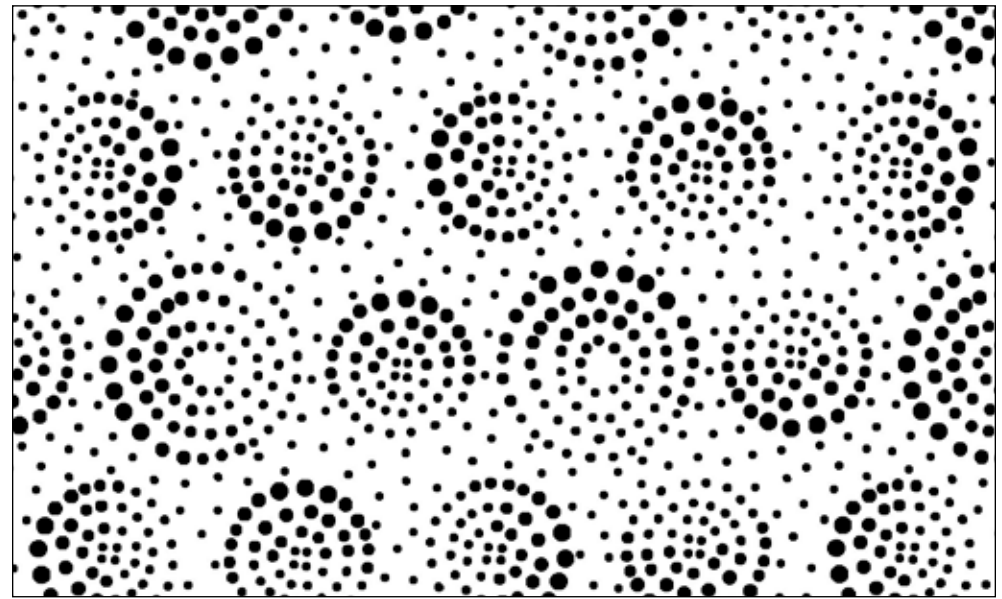
Style #RS&P
Pattern #4950 KW
100%



Style #RS&P
Pattern #4950 WK
100%



Style #RS&P
Pattern #4951 KW
100%



Style #RS&P
Pattern #4951 WK
100%



Style #RS&P
Pattern #4952 KW
100%



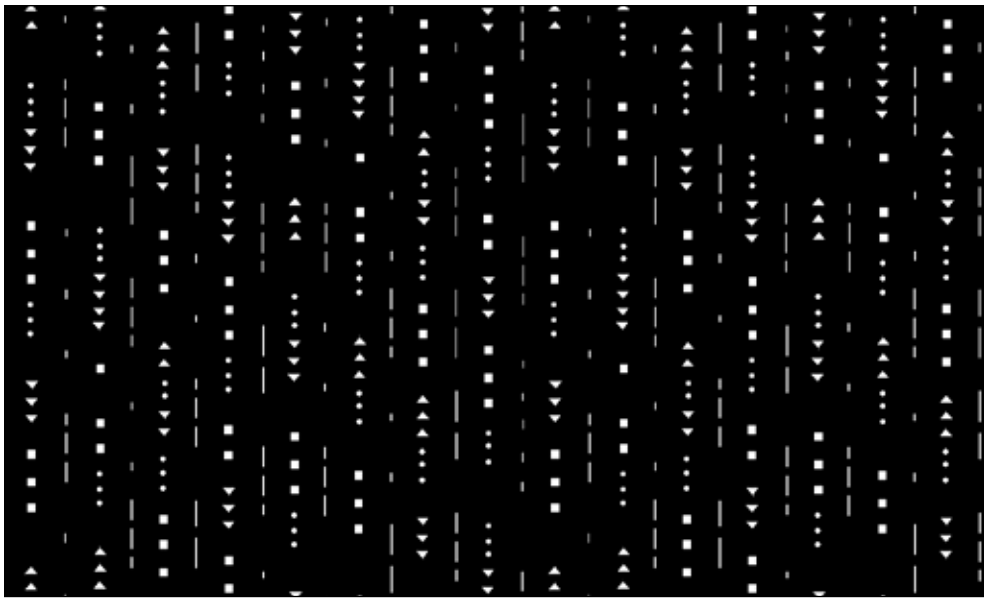
Style #RS&P
Pattern #4952 WK
100%



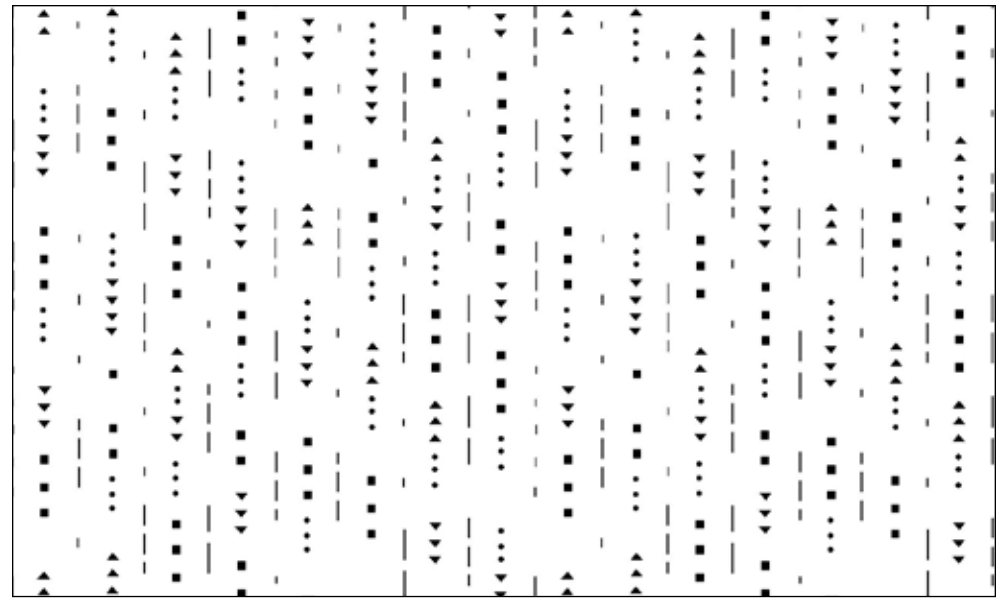
Style #RS&P
Pattern #4953 KW
100%



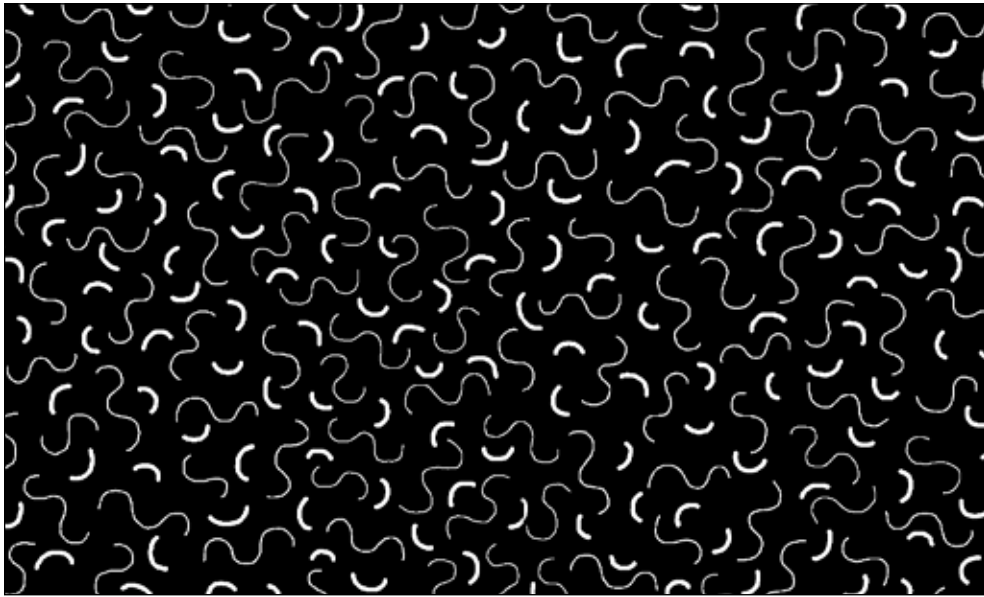
Style #RS&P
Pattern #4953 WK
100%



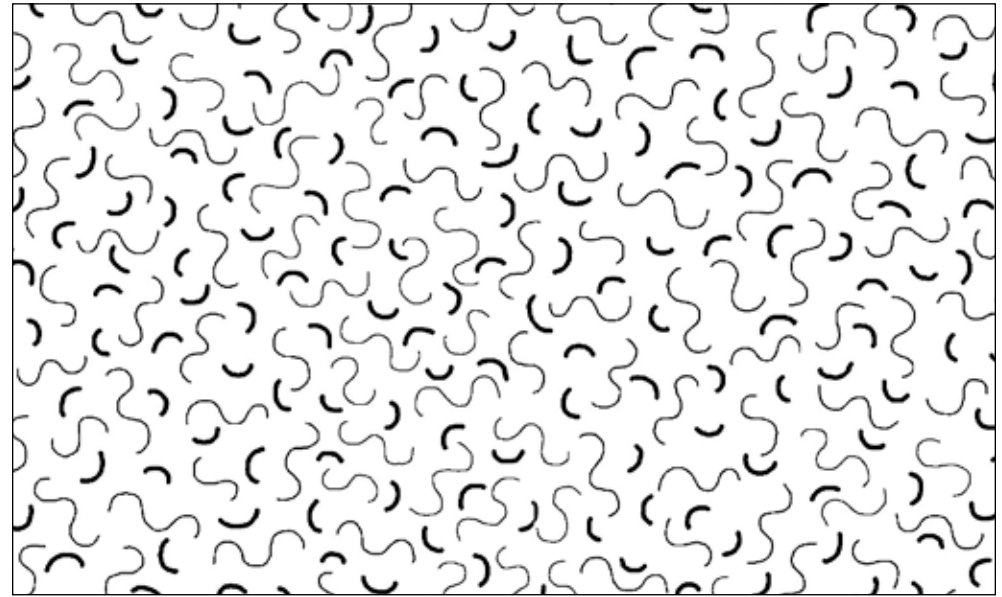
Style #RS&P
Pattern #4954 KW
100%



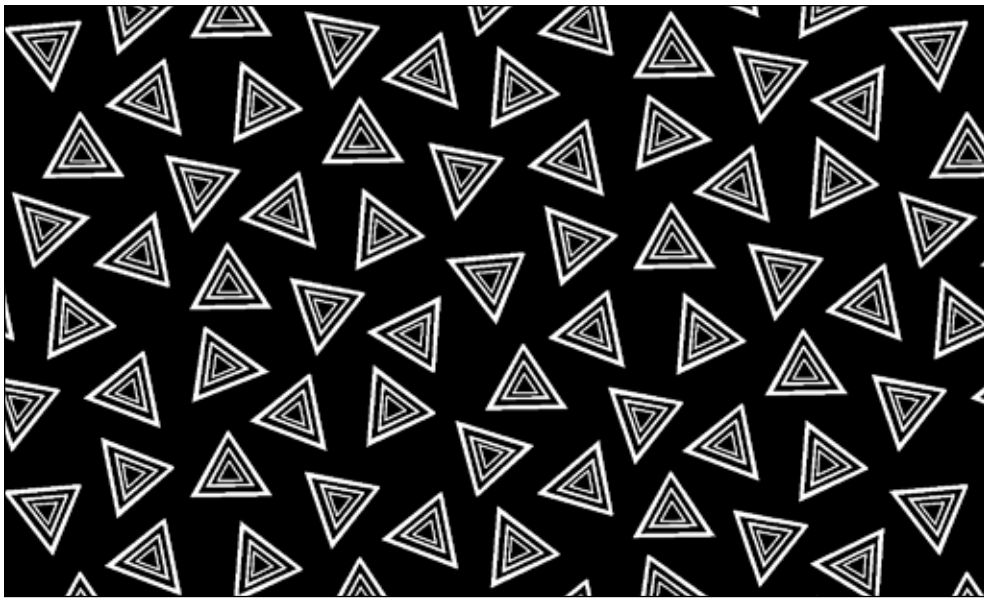
Style #RS&P
Pattern #4954 WK
100%



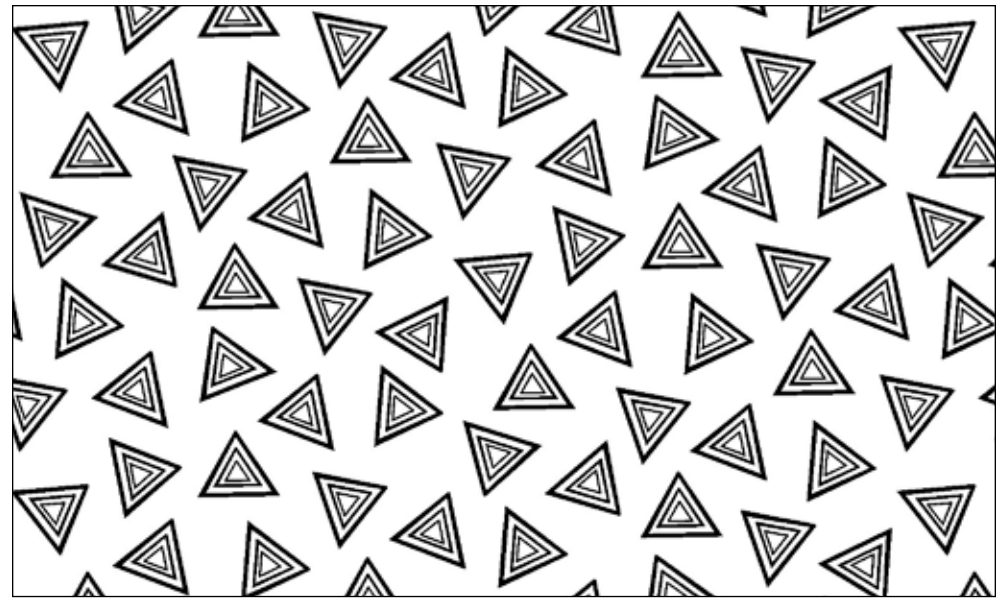
Style #RS&P
Pattern #4955 KW
100%



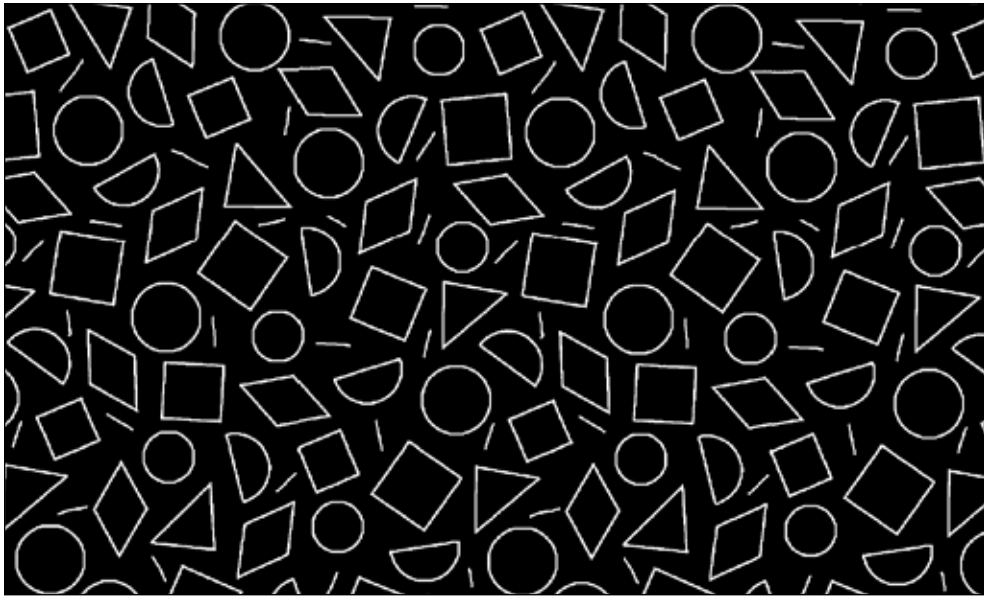
Style #RS&P
Pattern #4955 WK
100%



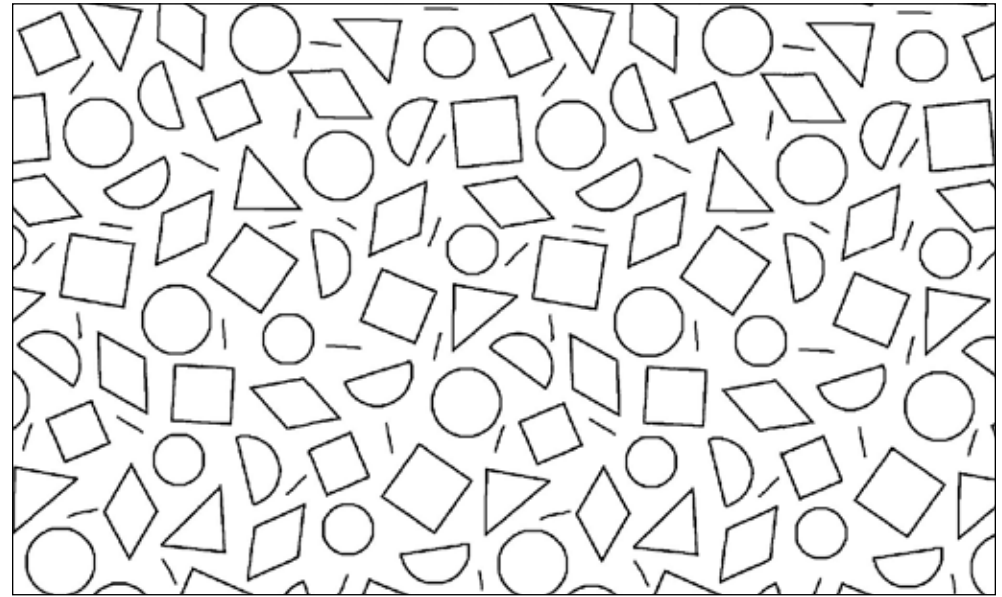
Style #RS&P
Pattern #4956 KW
100%



Style #RS&P
Pattern #4956 WK
100%



Style #RS&P
Pattern #4957 KW
100%



Style #RS&P
Pattern #4957 WK
100%

PRECUTS AVAILABLE!

Fat Quarter Bundle (24 Skus) 3 Minimum Order
5" x 5" (42 skus) 6 Minimum Order
10" x 10" (42 skus)..... 3 Minimum Order
2 1/2" strips (40 skus) 3 Minimum Order



100% cotton ♦ Cold wash & dry ♦ 44"/45" ♦ Colors may vary due to printing process

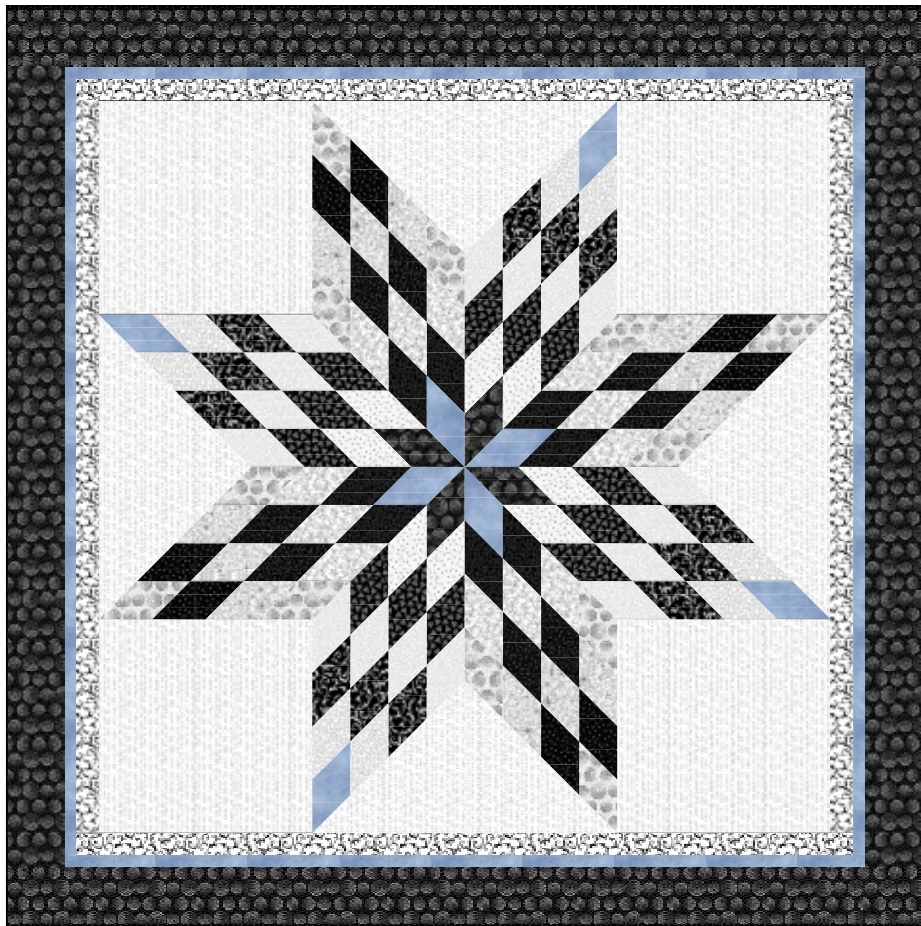
Not Intended for Children's Sleepwear

Quilt design by Kay M. Capp Cross

Pattern available at: www.pbtex.com when the fabric ships.

FABRIC REQUIREMENTS*

RS&P 4954 WK.....	1 3/4 yards	RS&P 4947 KW.....	1/8 yard
SUE6 302 BB	3/8 yard	RS&P 4951 KW.....	1 1/8 yards
RS&P 4957 WK.....	1/8 yard	RS&P 4949 WK	1/8 yard
RS&P 4950 KW	1/4 yard	RS&P 4956 KW	1/4 yard
RS&P 4948 WK	1/4 yard	RS&P 4955 KW	1/8 yard
RS&P 4951 WK.....	1/4 yard	RS&P 4950 WK	1/2 yard
RS&P 4952 WK	1/4 yard	RS&P 4954 KW.....	3/4 yard
RS&P 4949 KW	1/8 yard		
RS&P 4946 WK	1/4 yard	Total yardage	6 7/8 yards



Quilt size approximately: 60 1/2" x 60 1/2"

Kit Chart

Fabric (based on 15 yard bolts)	12	18	24
RS&P 4954 WK	2	2	3
SUE6 302 BB	1	1	1
RS&P 4957 WK	1	1	1
RS&P 4950 KW	1	1	1
RS&P 4948 WK	1	1	1
RS&P 4951 WK	1	1	1
RS&P 4952 WK	1	1	1
RS&P 4949 KW	1	1	1
RS&P 4946 WK	1	1	1
RS&P 4947 KW	1	1	1
RS&P 4951 KW	1	2	2
RS&P 4949 WK	1	1	1
RS&P 4956 KW	1	1	1
RS&P 4955 KW	1	1	1
RS&P 4950 WK	1	1	1
RS&P 4954 KW	1	1	2

*These yardages are estimates ONLY and may change on the pattern when it becomes available.