

Practical Magic

by Jacqueline Wild





Style #PMAG

Pattern #5359 PA

Reduced; rotated; 33 1/2" square with 1 1/2" border; 10 yards = 10 panels



Style #PMAG
Pattern #5360 K
100%



Style #PMAG
Pattern #5361 V
100%



Style #PMAG
Pattern #5362 B
100%



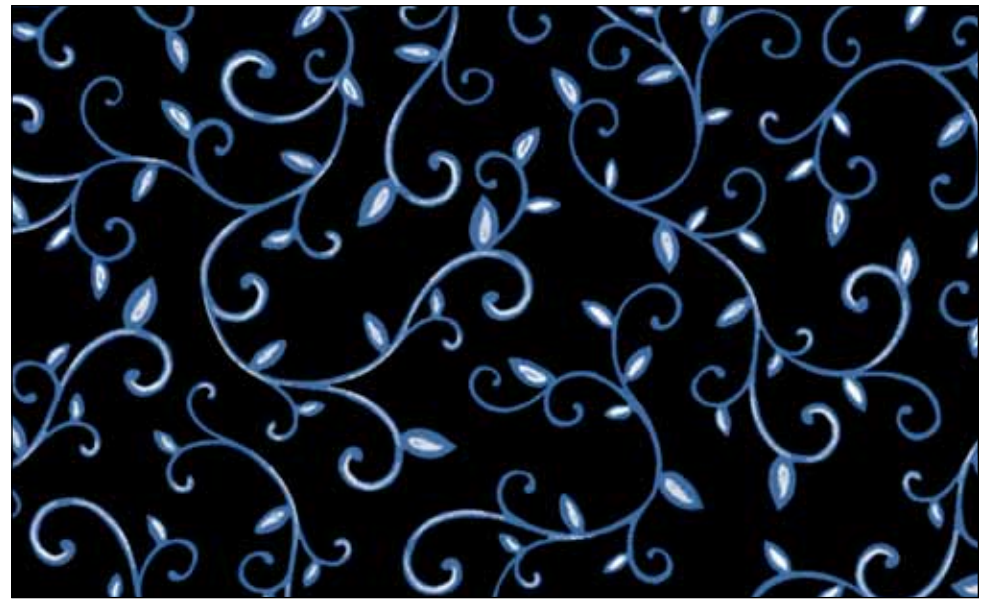
Style #PMAG
Pattern #5362 O
100%



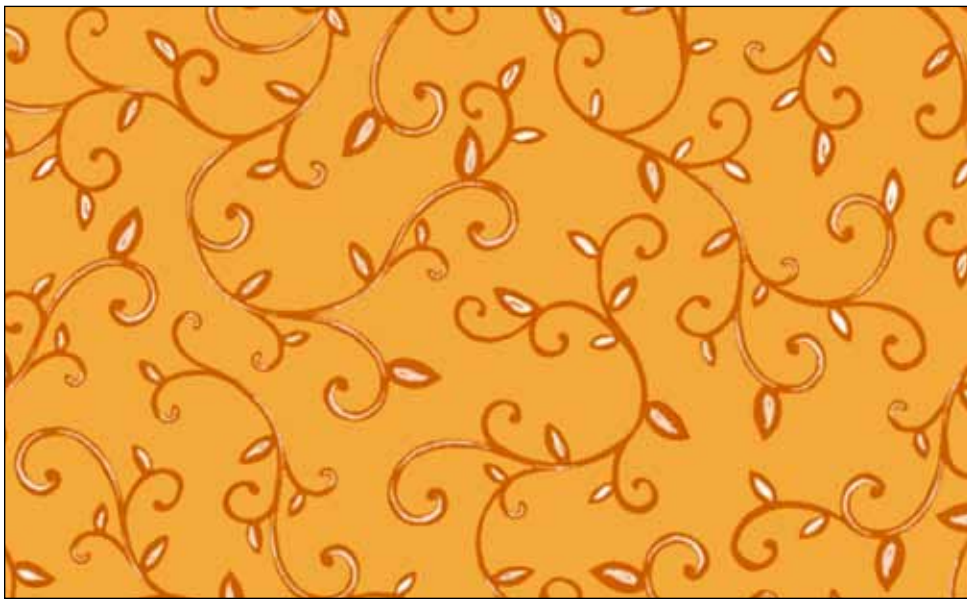
Style #PMAG
Pattern #5363 K
100%



Style #PMAG
Pattern #5364 E
100%



Style #PMAG
Pattern #5364 K
100%



Style #PMAG
Pattern #5364 LO
100%



Style #PMAG
Pattern #5364 O
100%



Style #PMAG
Pattern #5365 BV
100%



Style #PMAG
Pattern #5365 E
100%



Style #PMAG
Pattern #5365 K
100%



Style #PMAG
Pattern #5365 O
100%

BLENDER SUGGESTIONS:



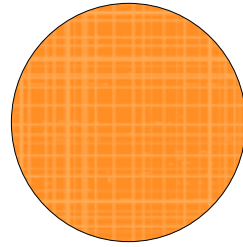
CSTO 5226 DB



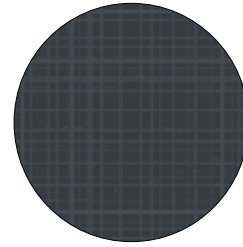
CSTO 5226 N



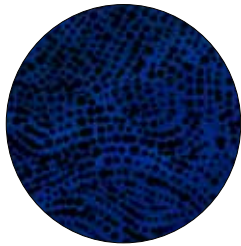
CSTO 5226 K



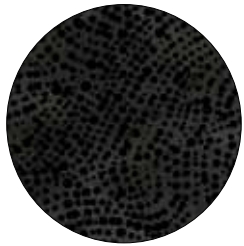
LDA2 4959 O



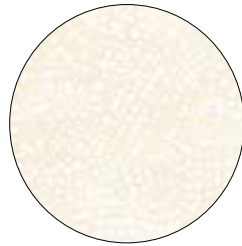
LDAR 4564 K



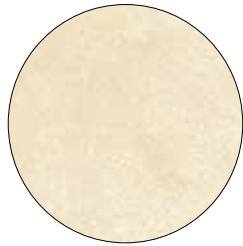
SERE 4492 N



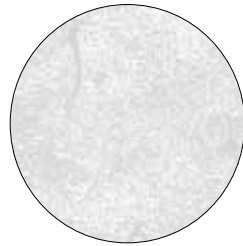
SERE 4492 K



SERE 4492 E



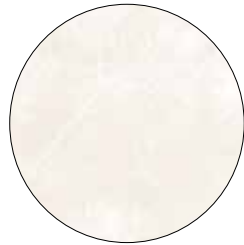
SUED 300 N



SUED 300 LS



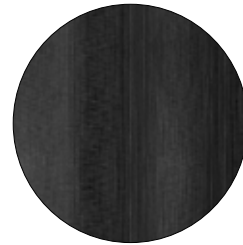
SUED 300 K



SUE7 303 EW



SUE6 302 DN



OMBR 4498 K 108"



100% cotton ♦ Cold wash & dry ♦ 44"/45" ♦ Colors may vary due to printing process

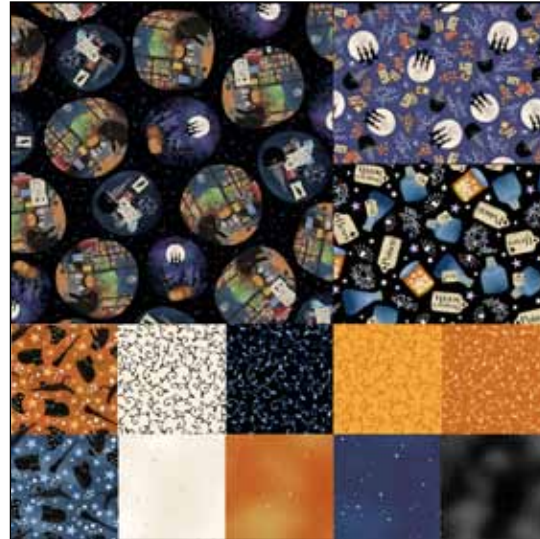
Not Intended for Children's Sleepwear

PRECUTS AVAILABLE!

Fat Quarter Bundle (1 panel + 13 skus) 3 Minimum Order
5" x 5" (42 skus) 6 Minimum Order
10" x 10" (42 skus)..... 3 Minimum Order
2 1/2" strips (40 skus)..... 3 Minimum Order

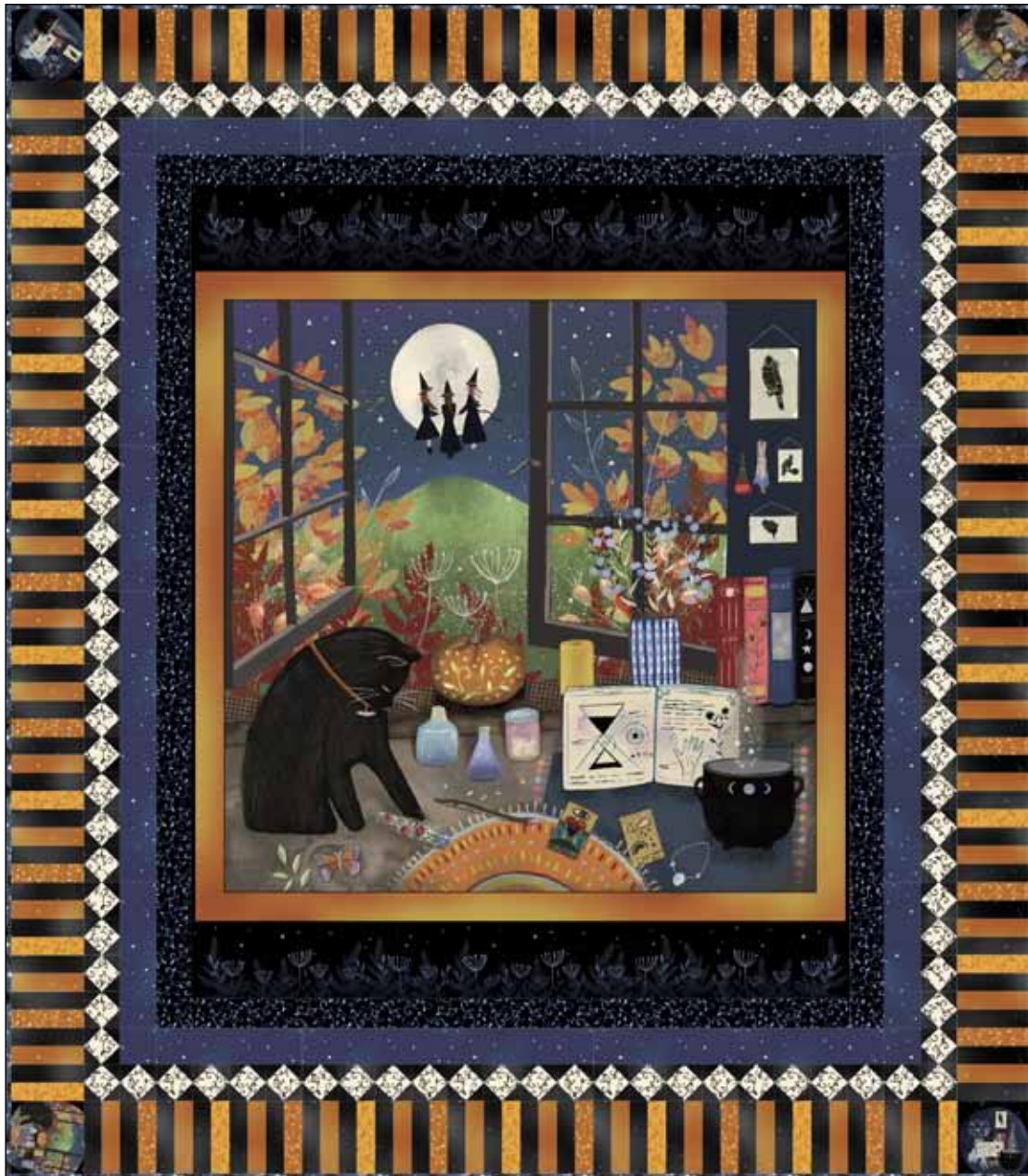


Fat Quarter Bundle



Other Bundles





Quilt size approximately: 53" x 60"

Crisp & Clear quilt by Stacey Day

Pattern available at:
www.pbtex.com when the fabric ships.

FABRIC REQUIREMENTS*

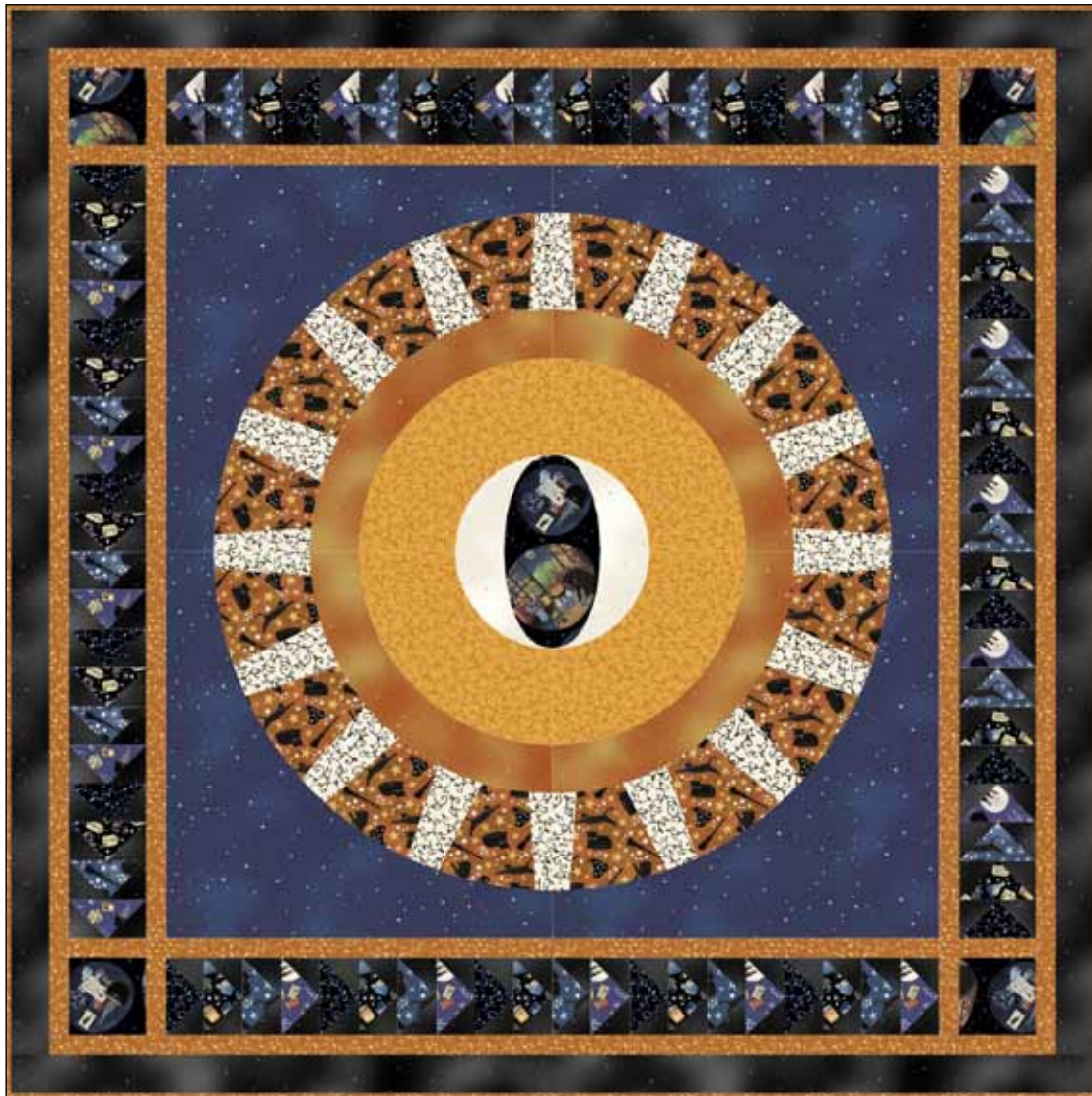
PMAG 5359 PA.... 1 panel	PMAG 5364 O 1/4 yard
PMAG 5360 K..... 1/4 yard	PMAG 5365 K..... 1 1/4 yards
PMAG 5362 B..... 1/2 yard	PMAG 5365 O 1/3 yard
PMAG 5364 E 1/3 yard	PMAG 5365 BV.... 1/2 yard
PMAG 5364 K..... 3/8 yard	
PMAG 5364 LO.... 1/4 yard	Total yardage 4 7/8 yards

**These yardages are estimates ONLY and may change on the pattern when it becomes available.*

Kit Chart

Fabric (based on 15 yard bolts)	12	18	24
PMAG 5359 PA*	1	2	3
PMAG 5360 K	1	1	1
PMAG 5362 B	1	1	1
PMAG 5364 E	1	1	1
PMAG 5364 K	1	1	1
PMAG 5364 LO	1	1	1
PMAG 5364 O	1	1	1
PMAG 5365 K	2	2	3
PMAG 5365 O	1	1	1
PMAG 5365 BV	1	1	1

*10 yards = 10 panels



Quilt size approximately: 56" x 56"

Beholder quilt by Stacey Day

Pattern available at:
www.pbtex.com when the fabric ships.

FABRIC REQUIREMENTS*

PMAG 5360 K.....	1/4 yard	PMAG 5364 O	1 yard
PMAG 5361 V	1/4 yard	PMAG 5365 BV.....	1 1/4 yards
PMAG 5362 B.....	1/4 yard	PMAG 5365 E	1/4 yard
PMAG 5362 O	1/4 yard	PMAG 5365 K.....	1 1/8 yard
PMAG 5363 K.....	5/8 yard	PMAG 5365 O	1/2 yard
PMAG 5364 E	3/8 yard		
PMAG 5364 K.....	1/4 yard	Total yardage	6 7/8 yards
PMAG 5364 LO.....	1/2 yard		

**These yardages are estimates ONLY and may change on the pattern when it becomes available.*

Kit Chart

Fabric (based on 15 yard bolts)	12	18	24
PMAG 5360 K	1	1	1
PMAG 5361 V	1	1	1
PMAG 5362 B	1	1	1
PMAG 5362 O	1	1	1
PMAG 5363 K	1	1	1
PMAG 5364 E	1	1	1
PMAG 5364 K	1	1	1
PMAG 5364 LO	1	1	1
PMAG 5364 O	1	2	2
PMAG 5365 BV	2	2	3
PMAG 5365 E	1	1	1
PMAG 5365 K	1	2	2
PMAG 5365 O	1	1	1