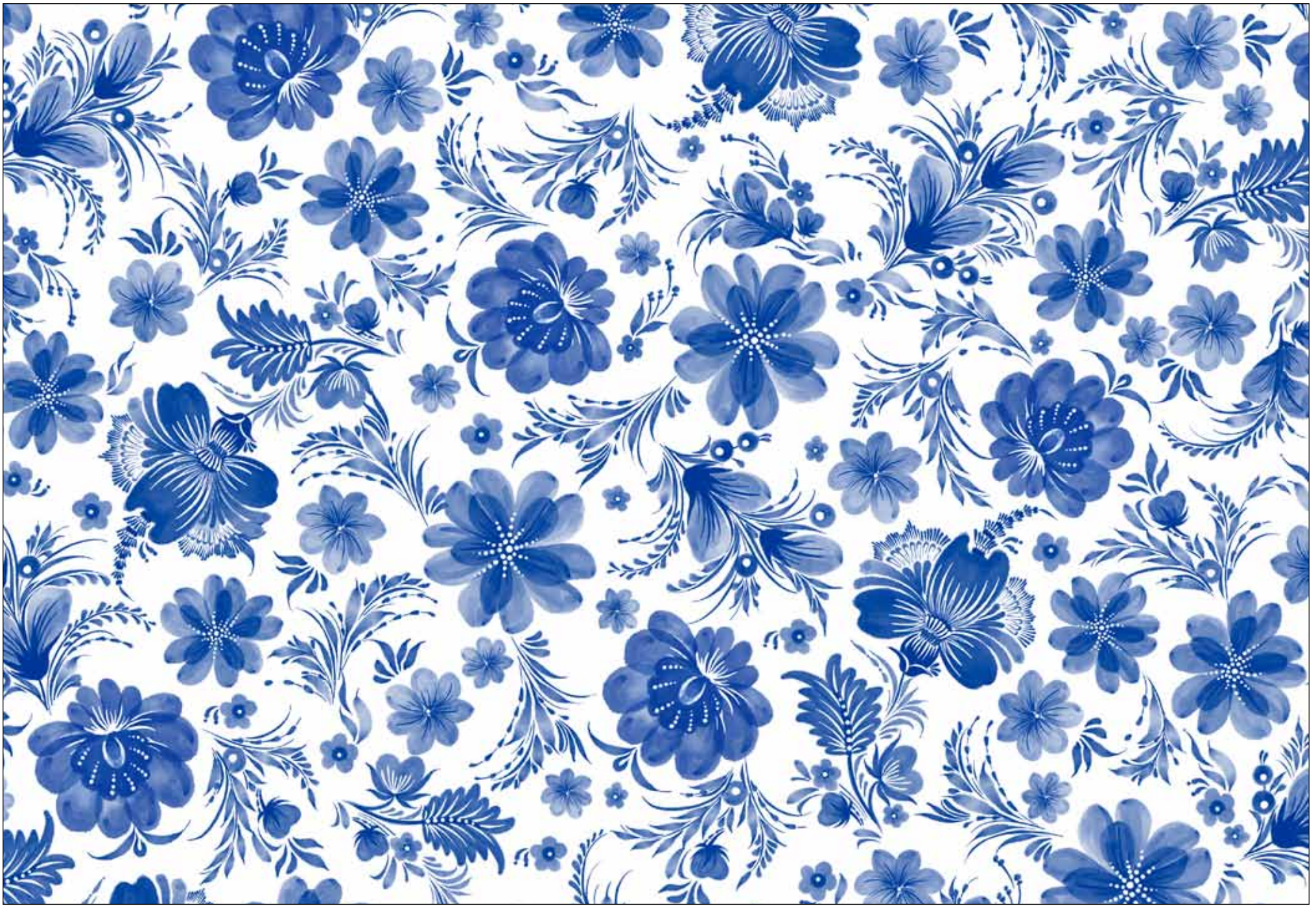


Porcelaina

by Geetanjali Behera

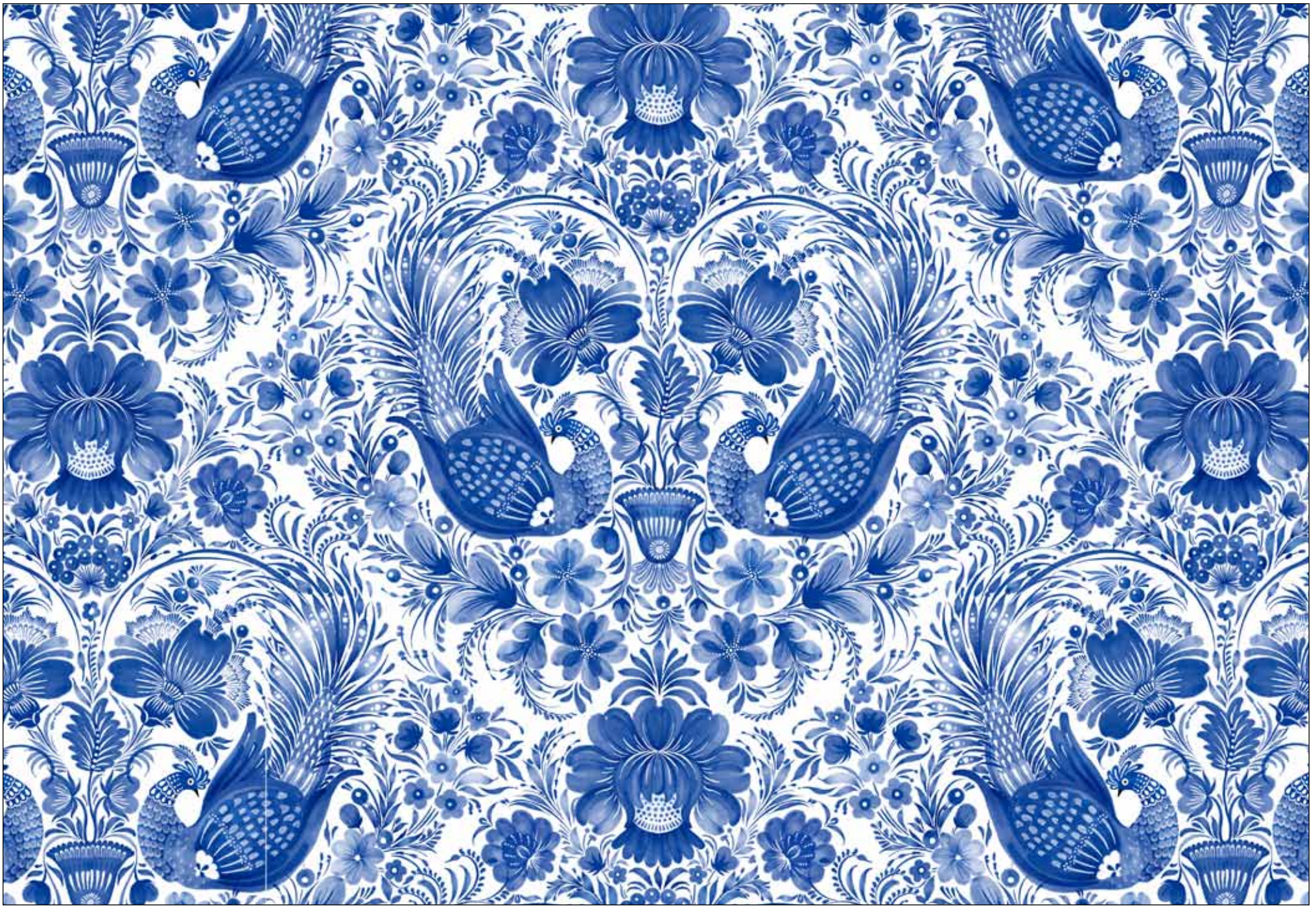




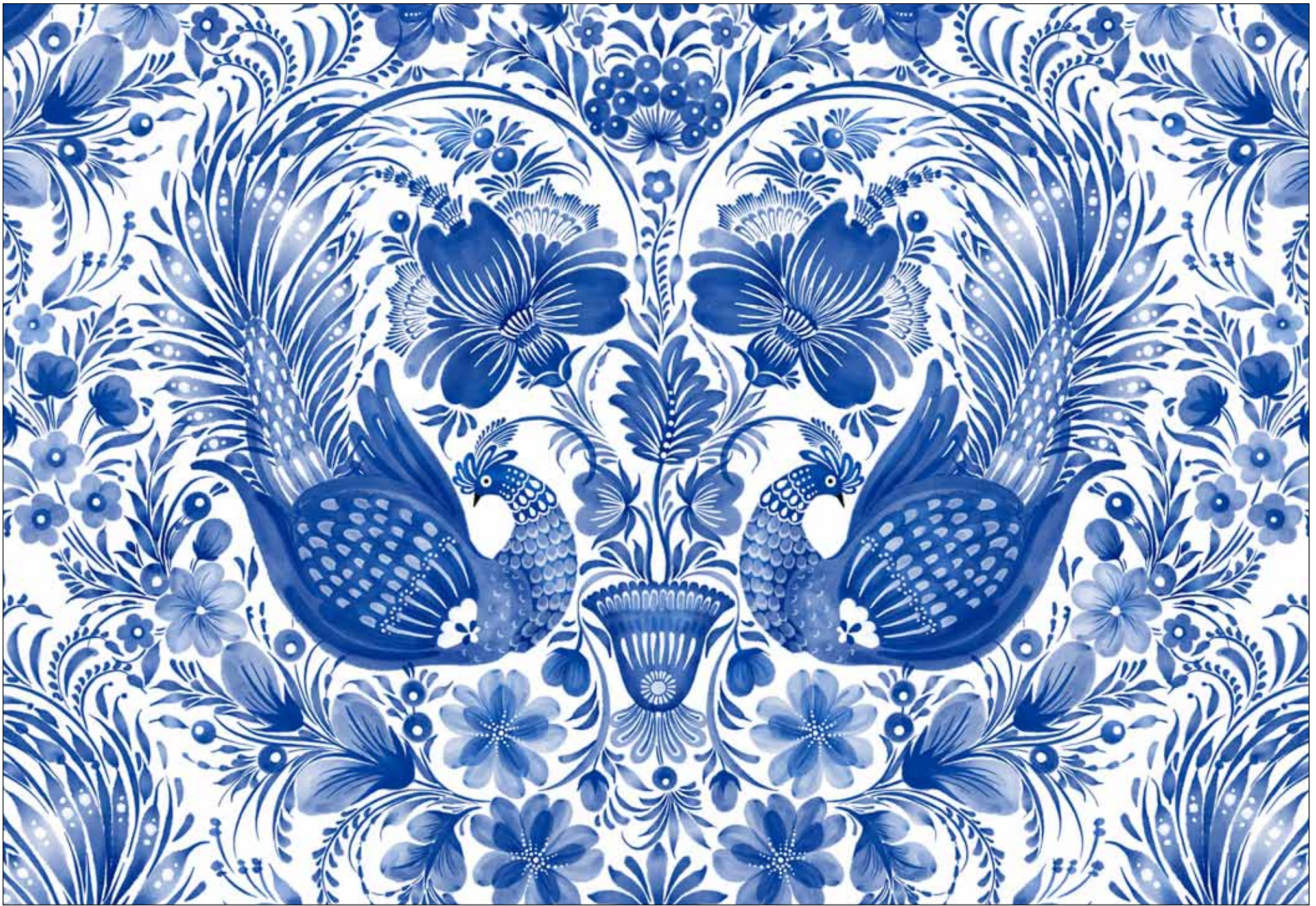
Style #PORC
Pattern #5503 WB
Reduced



Style #PORC
Pattern #5503 WB
100%



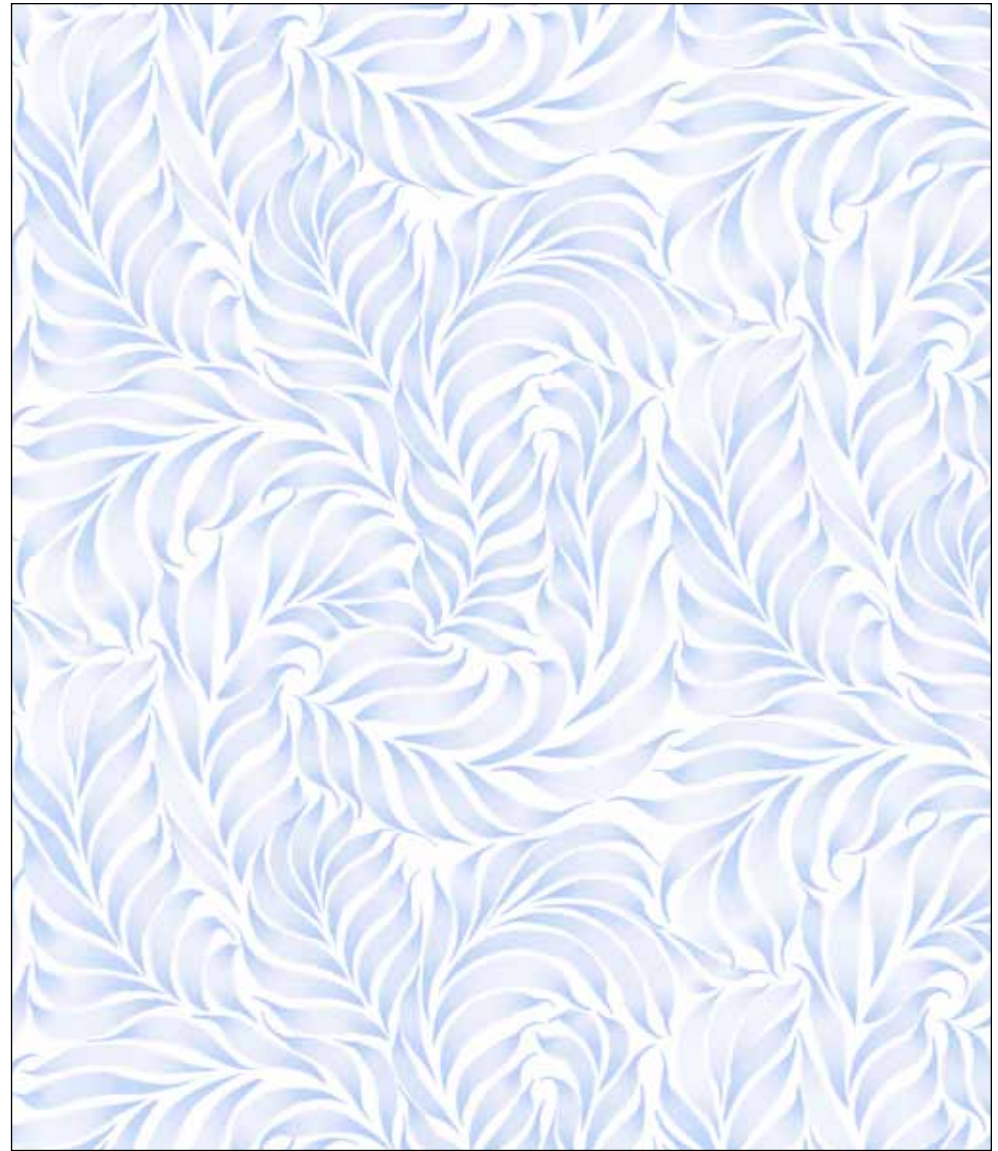
Style #PORC
Pattern #5504 WB
Reduced



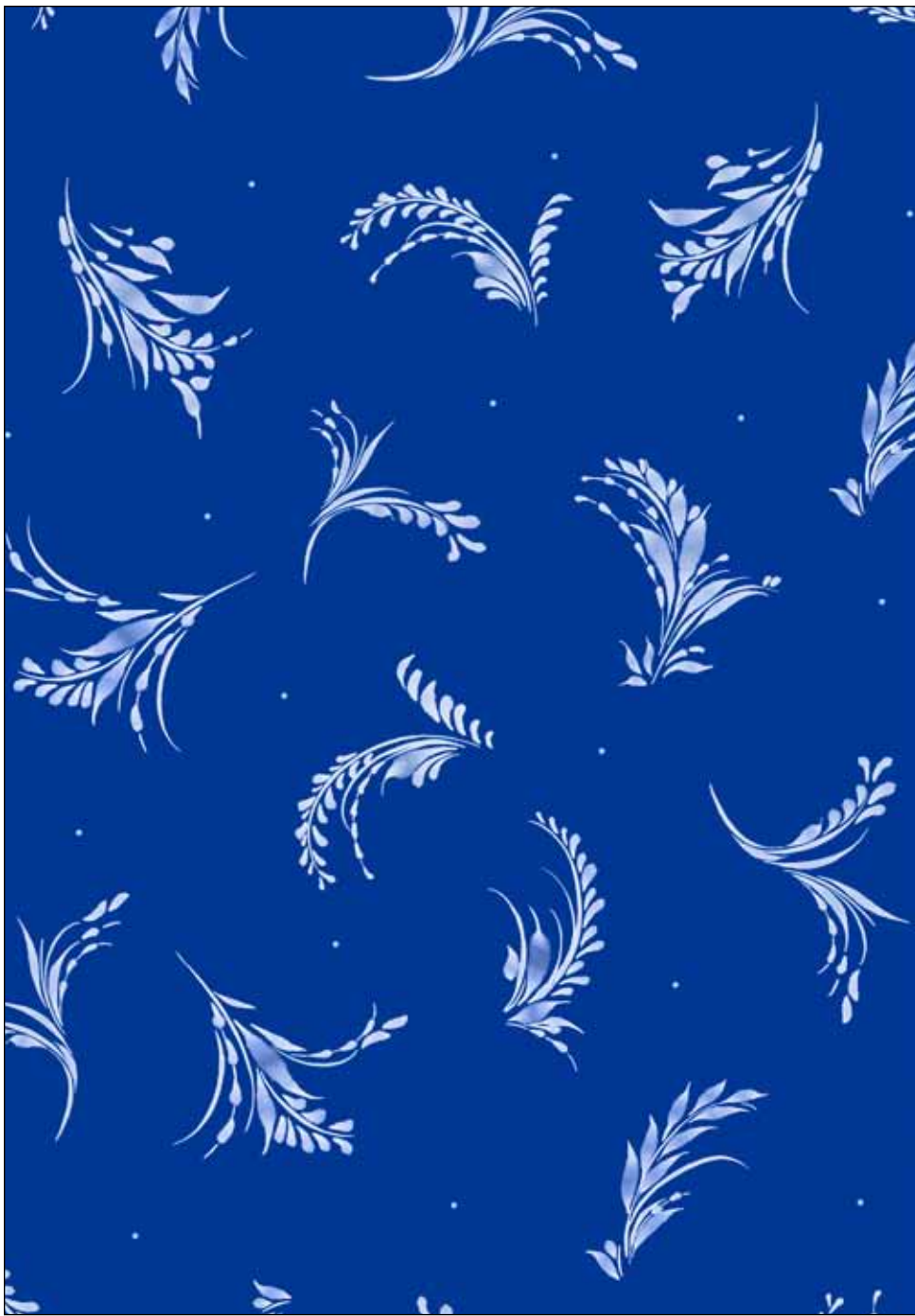
Style #PORC
Pattern #5504 WB
100%



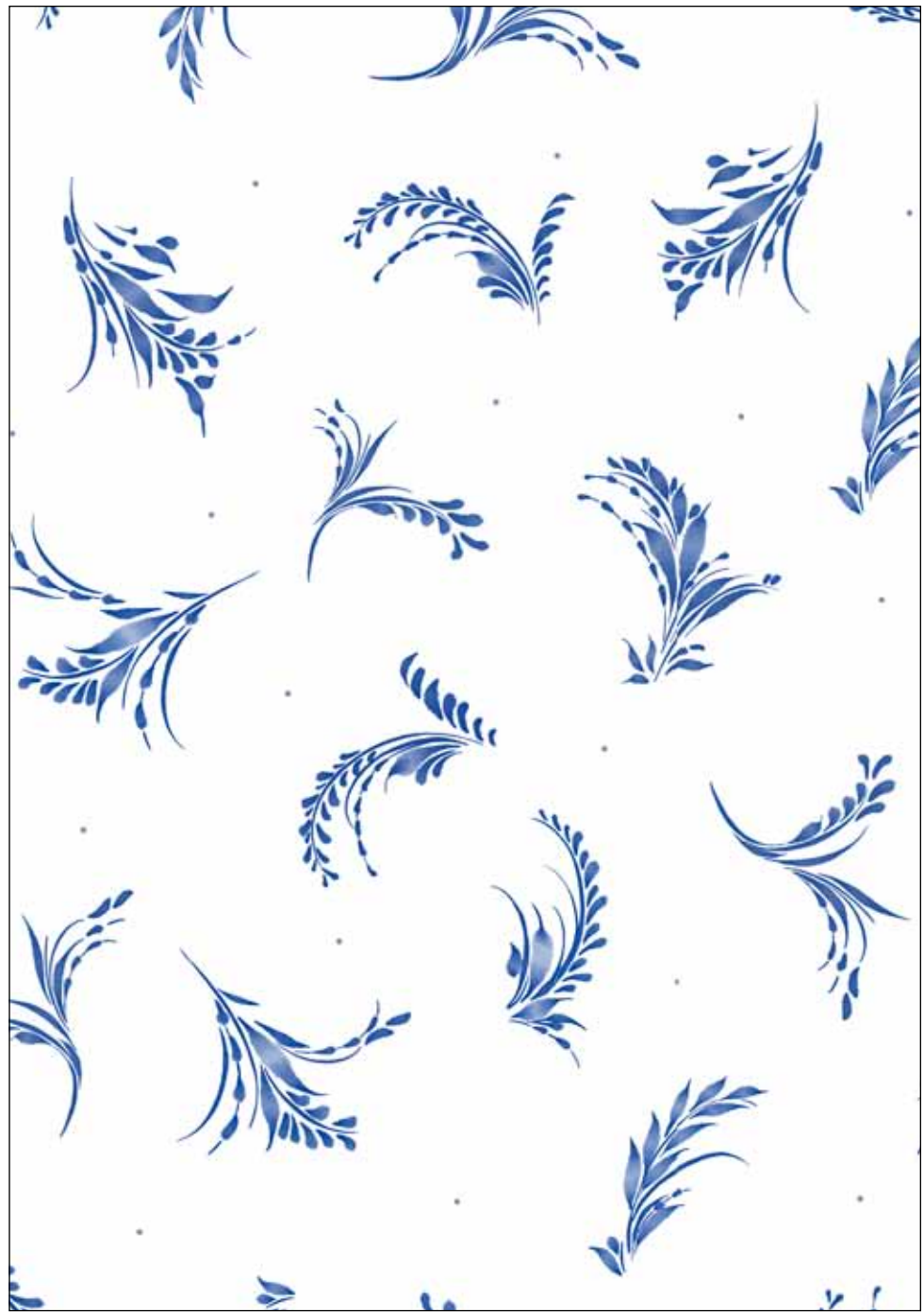
Style #PORC
Pattern #5505 B
100%



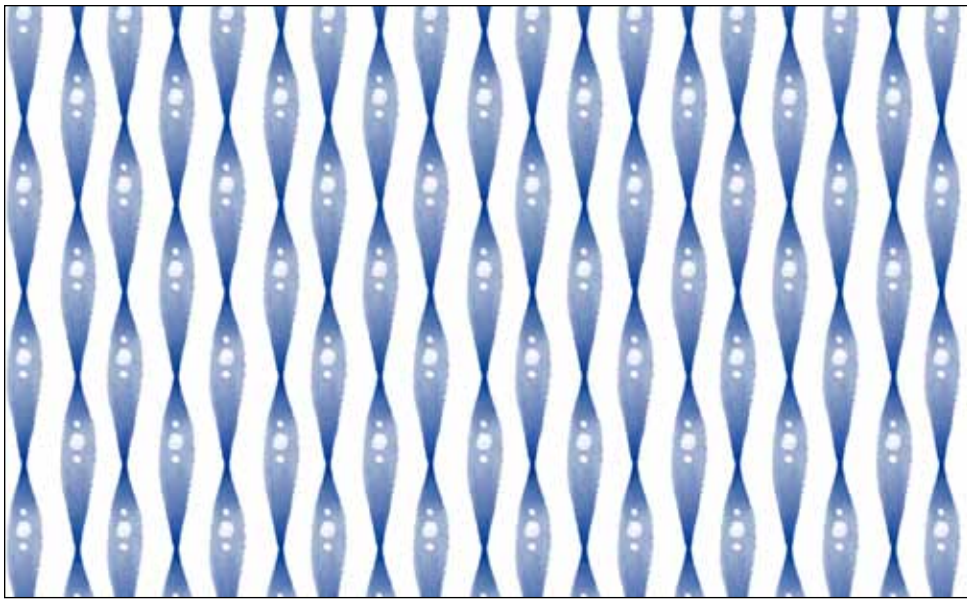
Style #PORC
Pattern #5505 LB
100%



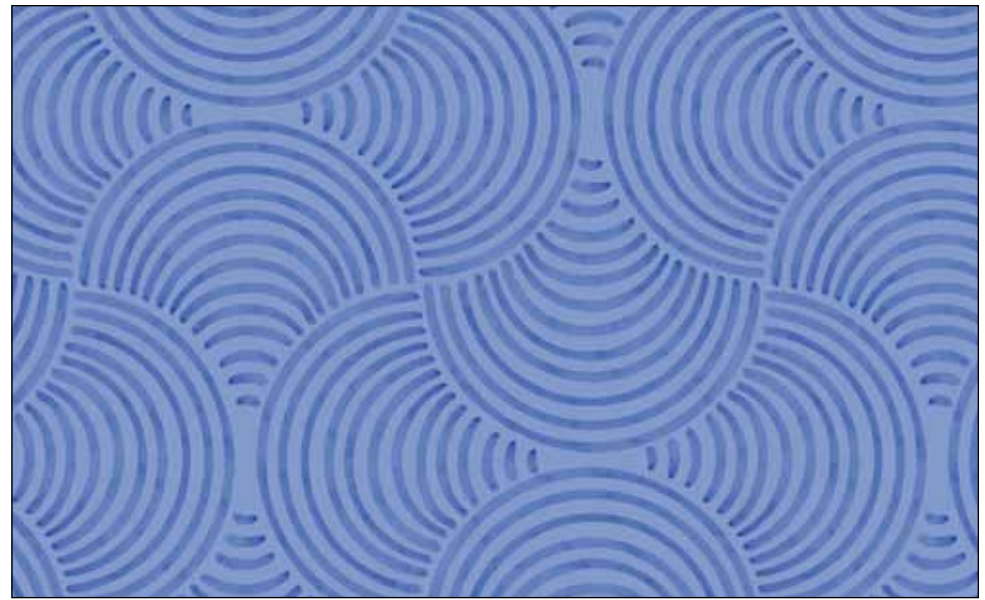
Style #PORC
Pattern #5506 DB
100%



Style #PORC
Pattern #5506 W
100%



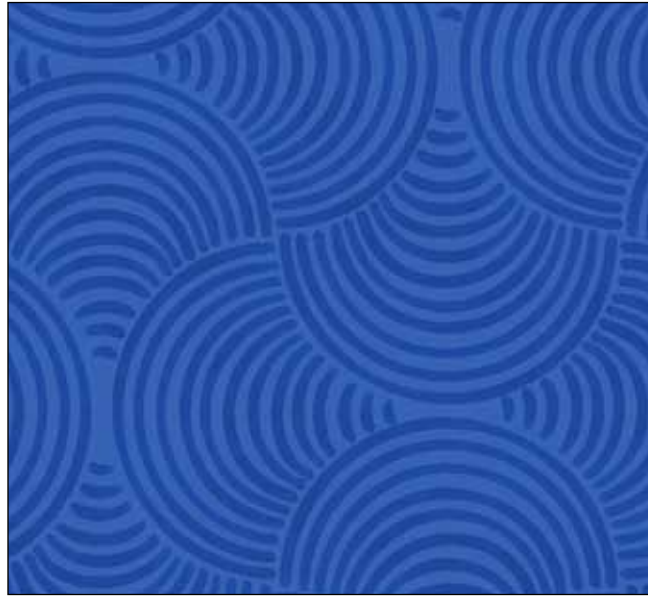
Style #PORC
Pattern #5507 WB
100%



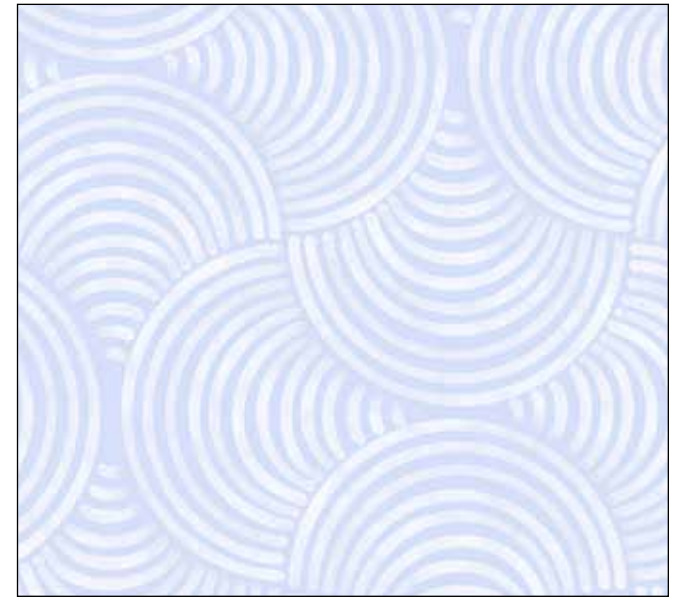
Style #PORC
Pattern #5508 B
100%



Style #PORC
Pattern #5508 BW
100%



Style #PORC
Pattern #5508 DB
100%



Style #PORC
Pattern #5508 LB
100%



Style #PORW
Pattern #5568 WB 108"
Reduced



Style #PORW

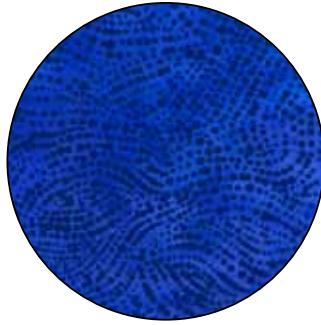
Pattern #5568 WB 108"

100% This sku is 20% larger in repeat than Pattern #5504 WB

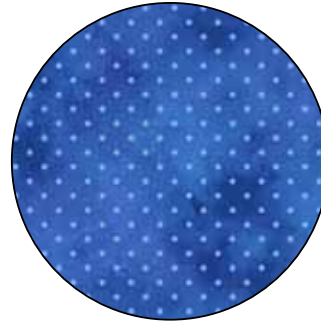
BLENDER SUGGESTIONS:



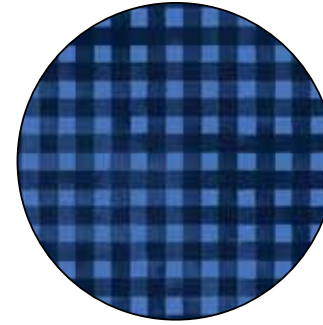
SUEB 300 BB



SERE 4492 BV



JEWE 5356 DB

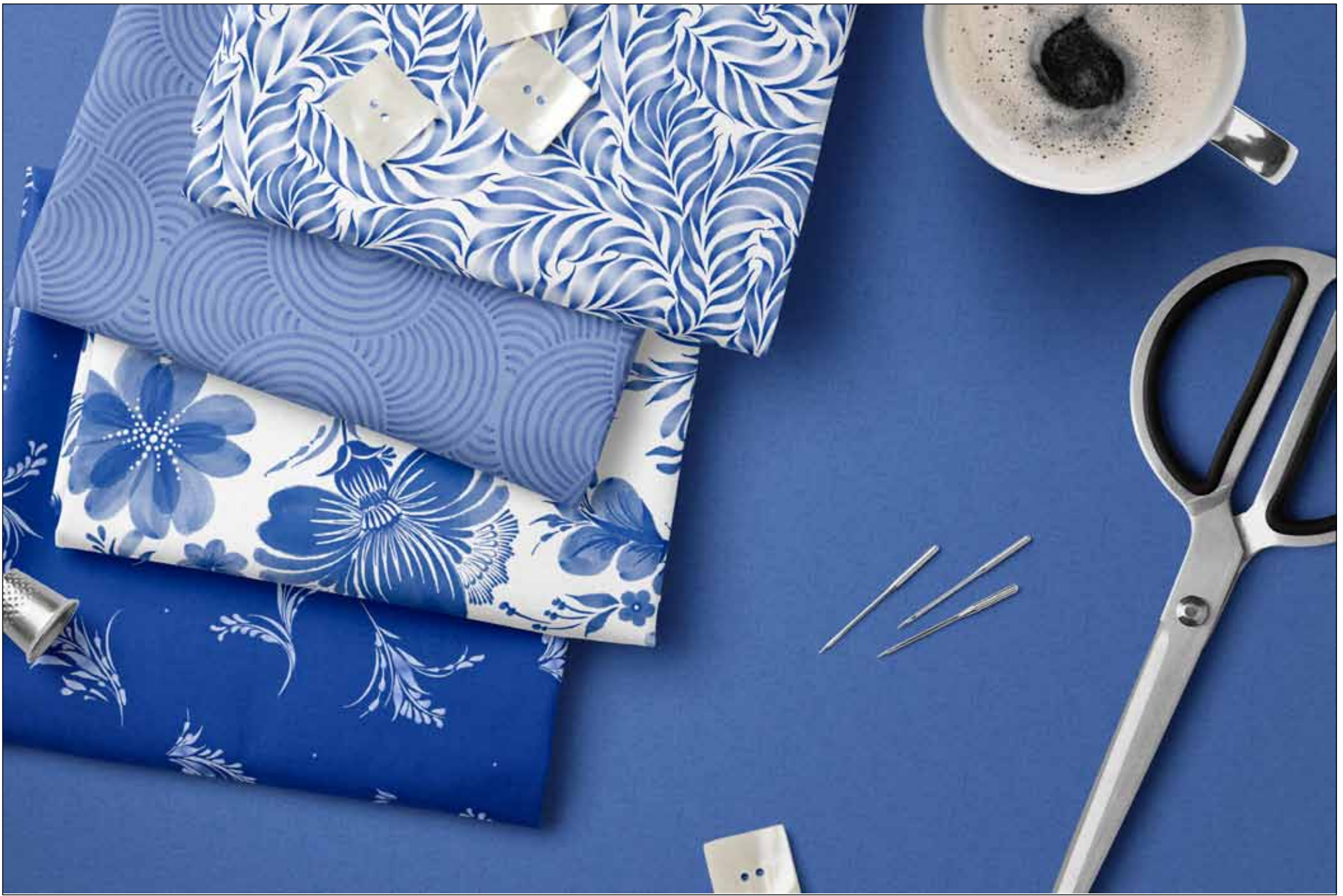


JEWE 5357 DB



100% cotton ♦ Cold wash & dry ♦ 44"/45" ♦ Colors may vary due to printing process

Not Intended for Children's Sleepwear





Quilt size approximately: 50" x 50"

Quilt Design by Cyndi Hershey

Pattern available at:
www.pbtex.com when the fabric ships.

FABRIC REQUIREMENTS*

PORC 5503 WB.....1 1/2 yards
 PORC 5505 B.....1/2 yard
 PORC 5506 W.....5/8 yard
 PORC 5508 B.....1/2 yard
 PORC 5508 LB.....1/2 yard
 PORC 5508 DB3/4 yard
 JEWE 5358 DB1 3/4 yards
 RA13 4881 W.....1/4 yard

Total yardage6 1/2 yards

**These yardages are estimates ONLY and may change on the pattern when it becomes available.*

Kit Chart

Fabric (based on 15 yard bolts)	12	18	24
PORC 5503 WB	2	2	3
PORC 5505 B	1	1	1
PORC 5506 W	1	1	2
PORC 5508 B	1	1	1
PORC 5508 LB	1	1	1
PORC 5508 DB	1	1	2
JEWE 5358 DB	2	3	3
RA13 4881 W	1	1	1