

Pickleball Champ

by Courtney Morgenstern





Style #PCHA

Pattern #5264 MU

Reduced; block approx. 6 7/8" square; 10 block repeat; running yardage

EAT

SLEEP

PICKLEBALL

REPEAT

Style #PCHA
Pattern #5264 MU
100%



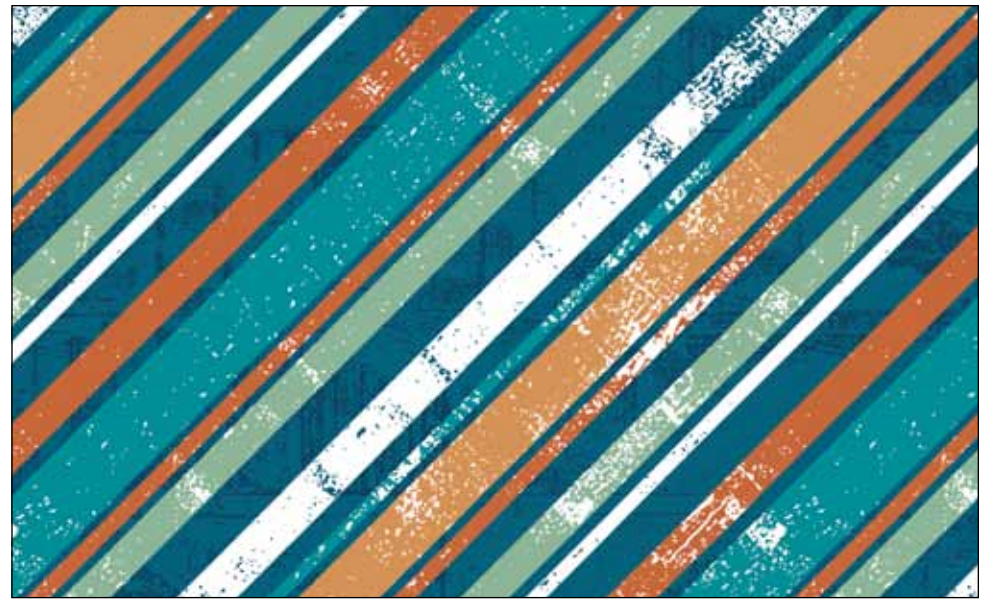
Style #PCHA
Pattern #5265 LT
Reduced



Style #PCHA
Pattern #5265 LT
100%



Style #PCHA
Pattern #5267 E
100%



Style #PCHA
Pattern #5270 MU
100%



Style #PCHA
Pattern #5268 G
100%



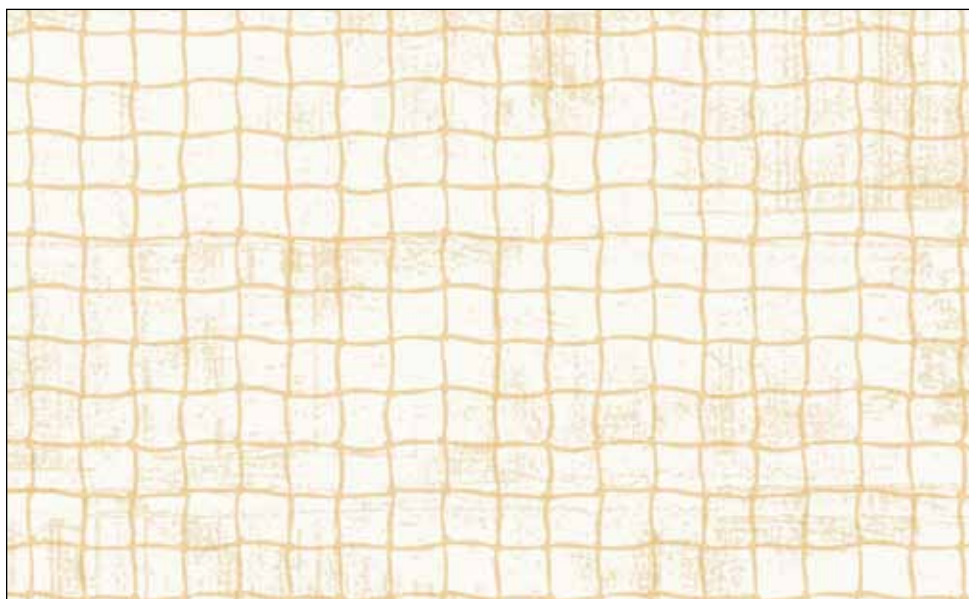
Style #PCHA
Pattern #5268 T
100%



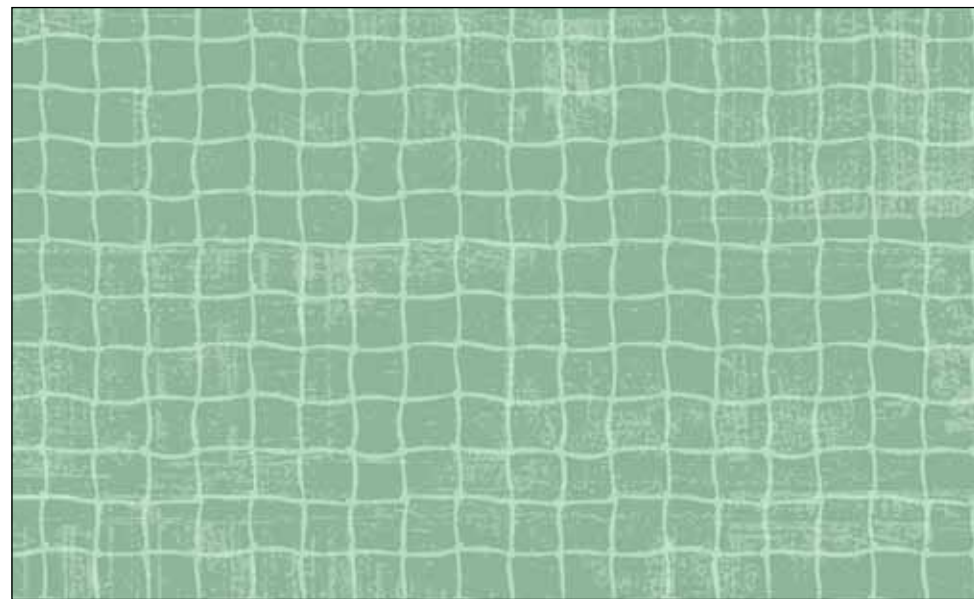
Style #PCHA
Pattern #5269 DB
100%



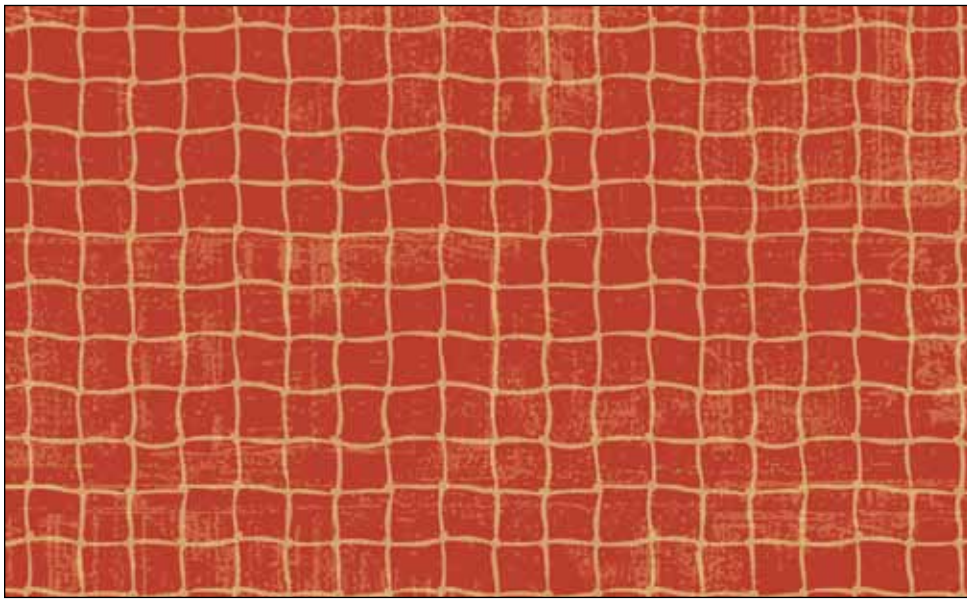
Style #PCHA
Pattern #5269 I
100%



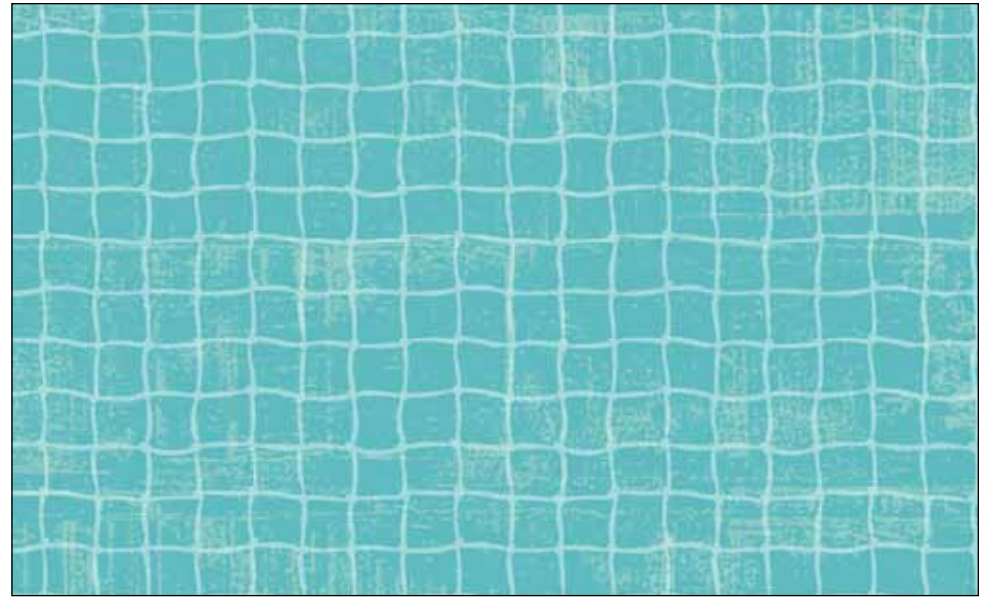
Style #PCHA
Pattern #5271 E
100%



Style #PCHA
Pattern #5271 G
100%



Style #PCHA
Pattern #5271 I
100%



Style #PCHA
Pattern #5271 T
100%

PRECUTS AVAILABLE!

Fat Quarter Bundle (1 repeat + 13 skus) 3 Minimum Order
5" x 5" (42 skus) 6 Minimum Order
10" x 10" (42 skus)..... 3 Minimum Order
2 1/2" strips (40 skus)..... 3 Minimum Order



Fat Quarter Bundle

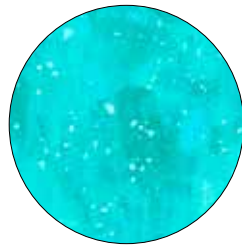


Other Bundles

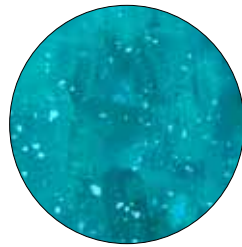
BLENDER SUGGESTIONS:



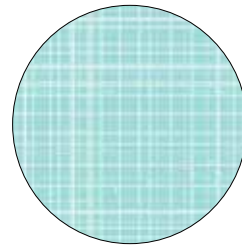
COSM 5130 E



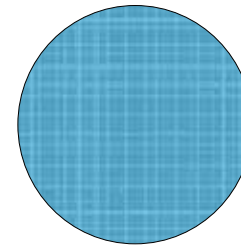
COSM 5130 T



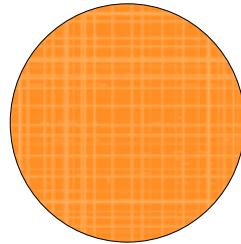
COSM 5130 DT



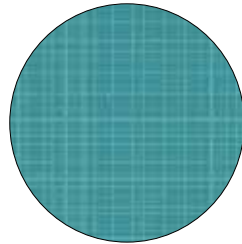
LDAR 4564 LT



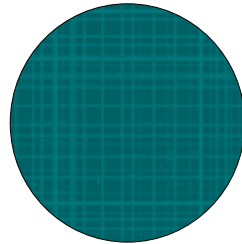
LDAR 4564 T



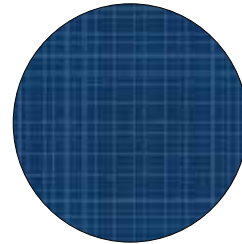
LDA2 4959 O



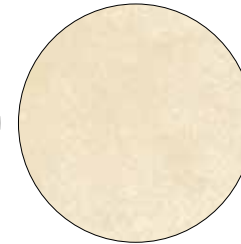
LDA2 4959 T



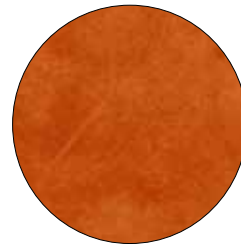
LDA2 4959 DT



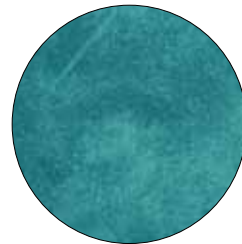
LDA2 4959 N



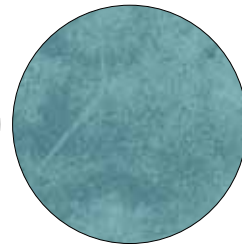
SUE7 300 E



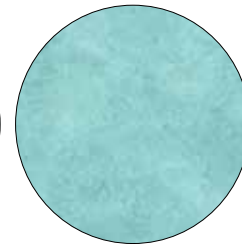
SUE7 303 I



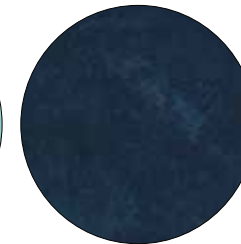
SUE7 303 TG



SUE7 303 BG



SUES 299 M



SUE7 300 B



100% cotton ♦ Cold wash & dry ♦ 44"/45" ♦ Colors may vary due to printing process

Not Intended for Children's Sleepwear





Quilt size approximately: 50" x 50"

Quilt design by Cyndi Hershey

Pattern available at:
www.pbtex.com when the fabric ships.

FABRIC REQUIREMENTS*

PCHA 5264 MU 3 rows
 (15 blocks)
 PCHA 5266 DB 1/2 yard
 PCHA 5269 DB 1/2 yard
 PCHA 5270 MU 1/2 yard
 PCHA 5271 E 1 1/4 yards
 PCHA 5271 I 1/2 yard
 PCHA 5271 T 5/8 yard

Total yardage 4 1/2 yards

*These yardages are estimates ONLY and may change on the pattern when it becomes available.

Kit Chart

Fabric (based on 15 yard bolts)	12	18	24
PCHA 5264 MU	1	1	2
PCHA 5266 DB	1	1	1
PCHA 5269 DB	1	1	1
PCHA 5270 MU	1	1	1
PCHA 5271 E	2	2	3
PCHA 5271 I	1	1	1
PCHA 5271 T	1	1	2



Bag size approximately: 20" tall x 18" wide x 12" deep

Happy Hauler Bag by Aunties Two #AT640

Pattern for Purchase available at:
Checker, Brewer or EE Schenck

FABRIC REQUIREMENTS*

PCHA 5266 DB 7/8 yard (outside)
PCHA 5271 I 1 1/4 yards (finishing)
PCHA 5267 E 1 1/2 yards (inside)

Total yardage 3 5/8 yards

Kit Chart

Fabric (based on 15 yard bolts)	12	18	24
PCHA 5266 DB	1	2	2
PCHA 5271 I	2	2	3
PCHA 5267 E	2	2	3