

PARTY ANIMALS

Quilt Design by Stacey Day



Quilt size: approximately 66" square

Featuring fabrics from
Party Animals by KG Art Studio for P&B Textiles



P&B Textiles • pbtex.com • 800-351-9087 • 208 Clock Tower Square, Portsmouth, RI 02871

PARTY ANIMALS

Fabric collection by KG Art Studio for P&B Textiles

Guest List quilt designed by Stacey Day

Skill level: Advanced Beginner • Finished Quilt Size: approximately 66" square

Yardages:

Fabric A: PANI 4855 PA	1 panel
Fabric B: PANI 4856 BT	2/3 yard
Fabric C: PANI 4856 FO	2/3 yard
Fabric D: PANI 4856 GY	2/3 yard
Fabric E: PANI 4857 MU	7/8 yard
Fabric F: PANI 4860 MU	1 3/4 yards
Fabric G: PANI 4861 R	5/8 yards
Backing: PANI 4858 R suggested	4 1/3 yards
	OR 2 1/4 yards of 108"
Batting	74" x 74"

Cutting Instructions:

Please read all instructions carefully before beginning. Strips are cut across the width of fabric (perpendicular to selvages) unless otherwise stated. All seams are sewn with a 1/4" seam unless otherwise stated. Label all pieces.

From Fabric A:

1. Cut nine 12 1/2" squares, centering each motif.

From Fabric B, C and D:

1. Cut each fabric into two separate pieces, down the LOF at the center where the colors meet.
 - a. From each **Yellow, Teal and Orange**, cut seven 4 7/8" squares: one from the very dark, and two each from the dark, medium, and light.
 - b. From each **Green, Blue and Purple**, cut fourteen 4 7/8" squares: two from the very dark, and four each from the dark, medium, and light.

From Fabric E:

1. Cut seven 3 1/2" strips. Sew together end to end and subcut two 3 1/2" x 60 1/2" strips and two 3 1/2" x 66 1/2" strips

From Fabric F:

1. Cut eight 4 7/8" strips; cut sixty-three 4 7/8" squares.
2. Cut three 4 1/2" strips; cut eighteen 4 1/2" squares.

From Fabric G:

1. Cut seven 2 1/4" strips for binding.

Piecing Instructions:

1. Draw one diagonal line across each 4 7/8" B-D square. Place each 4 7/8" square right side together (RST) with one 4 7/8" F square. Sew 1/4" on either side of the drawn line. Cut apart on the line and press open to make HST. Make fourteen **Yellow, Teal and Orange** HST, and twenty-eight **Green, Blue and Purple** HST. Trim each and square to 4 1/2" x 4 1/2".

2. Using one color's HST at a time, make two 4 1/2" x 12 1/2" B Units and two 4 1/2" x 16 1/2" A Units with the color gradient as shown and two 4 1/2" F squares. Make two each from the **Orange, Yellow, Green, Blue and Purple**. (Figure 1)

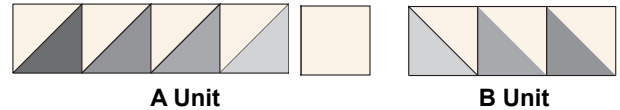


Figure 1 Make 2 each of color.

3. Using one color's HST at a time, make two 4 1/2" x 12 1/2" D Units and two 4 1/2" x 16 1/2" C Units with the color gradient as shown and two 4 1/2" F squares. Make two each from the **Teal, Green, Blue and Purple**. (Figure 2)

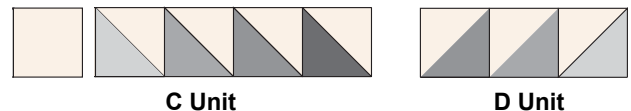


Figure 2 Make 2 each of color.

4. Sew the A Units and B Units to the bear, hippo, fox, kangaroo, and elephant A squares, matching the color of the HSTs to the colored border around each A square. Press seams open, and trim and square to 20 1/2" x 20 1/2". Repeat with the C and D Units, and the remaining A 12 1/2" squares. (Figure 3)

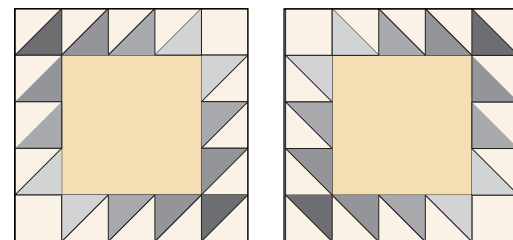
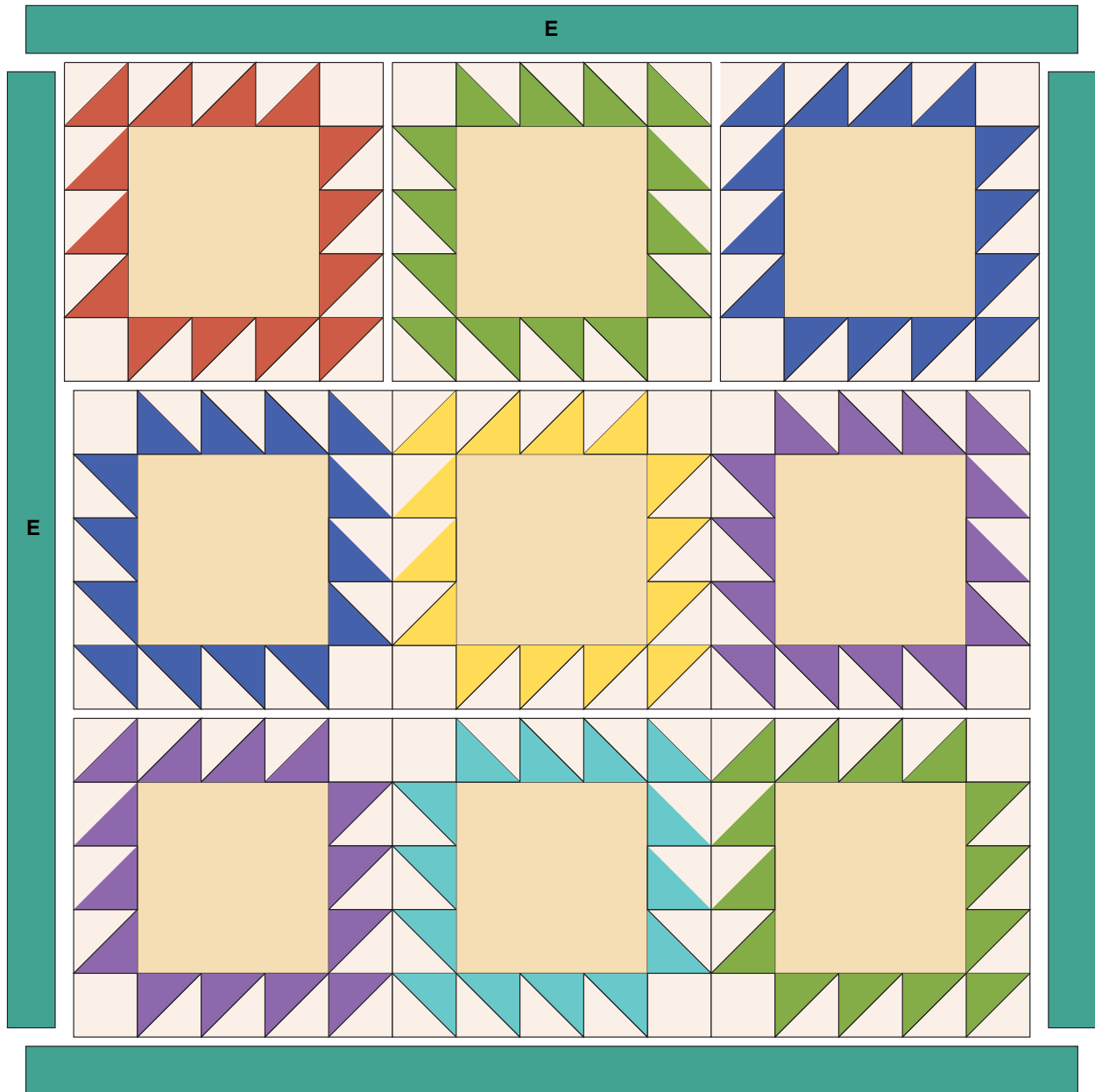


Figure 3 Make 9 blocks.

5. Sew the Blocks together in rows. Refer to the quilt layout diagram for block placement. Press seams open. Sew the rows together to make the quilt center.
6. Sew one 3 1/2" x 60 1/2" E strip to each side of the quilt center, matching ends and centers. Press towards E. Sew 3 1/2" x 66 1/2" E strips to the top and bottom, matching ends and centers. Press towards E.

Finishing:

1. If using regular width fabric, prepare backing using two widths. Press seams open. Trim pieced or 108" backing to 74" x 74" and press well.
2. Layer quilt top, batting, and backing. Baste layers together.
3. Quilt as desired.
4. Trim layers even with quilt top squaring corners.
5. Join seven 2 1/4" G binding strips with diagonal seams. Press seams open. Attach binding to quilt using your favorite method.
6. Make a label and sew to the back of the quilt.



Quilt Diagram

PARTY ANIMALS

Fabric Collection by
KG Art Studio for P&B Textiles



PANI 4855 PA*



PANI 4857 MU*



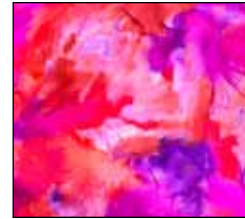
PANI 4858 MU



PANI 4858 R†



PANI 4859 BG



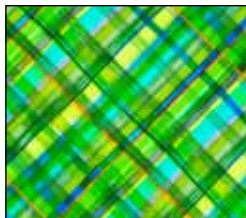
PANI 4859 RV



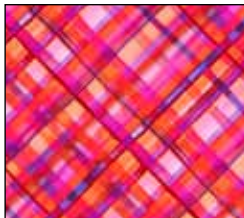
PANI 4860 MU*



PANI 4860 T



PANI 4861 G



PANI 4861 R*



PANI 4862 BG



PANI 4862 MU



PANI 4856 BT*



PANI 4856 FO*



PANI 4856 GY*

