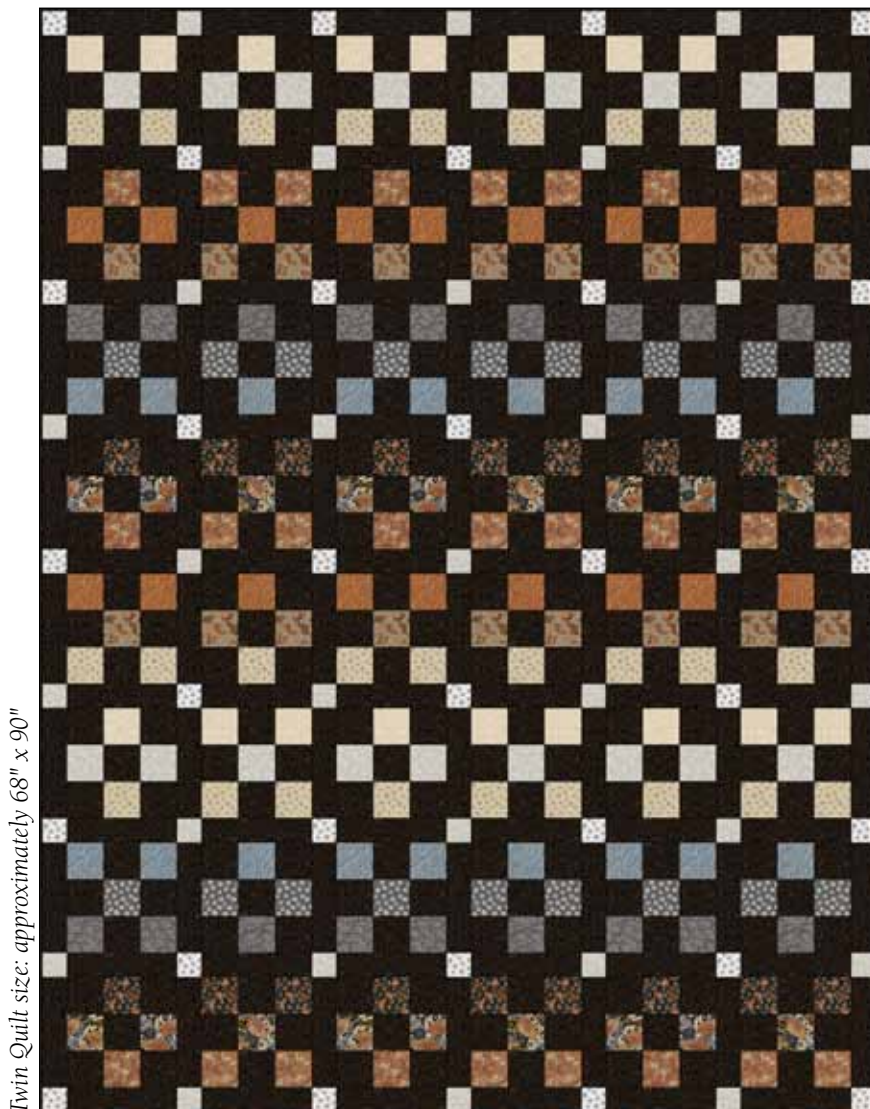


Pattern is available for purchase from P&B  
**PATTERN FOR PURCHASE**



Twin Quilt size: approximately 68" x 90"

## Origins

Woven Nines by Jamie Kalvestran (JKD-122; minimum order 6)

### FABRIC REQUIREMENTS

	Table Runner 13" x 64"	Crib 35" x 57"	Twin 68" x 90"	Queen 90" x 90"	King 101" x 101"
ORIG 5186 MU.....	1/8 yard.....	1/8 yard.....	1/4 yard.....	3/8 yard.....	3/8 yard
ORIG 5187 I.....	1/8 yard.....	1/8 yard.....	3/8 yard.....	1/2 yard.....	1/2 yard
ORIG 5188 K.....	1/8 yard.....	1/8 yard.....	1/4 yard.....	3/8 yard.....	3/8 yard
ORIG 5188 Z.....	1/8 yard.....	1/8 yard.....	1/4 yard.....	3/8 yard.....	1/2 yard
ORIG 5189 B.....	1/8 yard.....	1/8 yard.....	1/4 yard.....	3/8 yard.....	3/8 yard
ORIG 5189 I.....	1/8 yard.....	1/8 yard.....	1/4 yard.....	3/8 yard.....	1/2 yard
ORIG 5190 LST.....	1/4 yard.....	1/4 yard.....	1/2 yard.....	5/8 yard.....	2/3 yard
ORIG 5190 S.....	1/8 yard.....	1/8 yard.....	1/4 yard.....	3/8 yard.....	3/8 yard
ORIG 5191 LS.....	1/8 yard.....	1/8 yard.....	1/4 yard.....	1/4 yard.....	3/8 yard
ORIG 5191 NE.....	1/8 yard.....	1/8 yard.....	3/8 yard.....	1/2 yard.....	5/8 yard
ORIG 5191 S.....	1/8 yard.....	1/8 yard.....	1/4 yard.....	3/8 yard.....	3/8 yard
ORIG 5192 E.....	1/8 yard.....	1/8 yard.....	1/4 yard.....	3/8 yard.....	3/8 yard
ORIG 5192 K.....	5/8 yard.....	1 1/2 yards.....	4 1/8 yards.....	5 1/4 yards.....	6 1/2 yards
Binding of choice.....	3/8 yard.....	1/2 yard.....	3/4 yard.....	7/8 yard.....	7/8 yard
Total yardage.....	2 5/8 yards.....	3 5/8 yards.....	8 1/8 yards.....	11 yards.....	12 7/8 yards



## *Full Kit Chart*

<b>Fabric</b> <i>(based on 15 yard bolts)</i>	<b>12</b>	<b>18</b>	<b>24</b>
ORIG 5186 MU	1	1	1
ORIG 5187 I	1	1	1
ORIG 5188 K	1	1	1
ORIG 5188 Z	1	1	1
ORIG 5189 B	1	1	1
ORIG 5189 I	1	1	1
ORIG 5190 LST	1	1	1
ORIG 5190 S	1	1	1
ORIG 5191 LS	1	1	1
ORIG 5191 NE	1	1	1
ORIG 5191 S	1	1	1
ORIG 5192 E	1	1	1
ORIG 5192 K	4	6	8
Binding of choice	1	1	2