

On Safari

by Steve Burgess

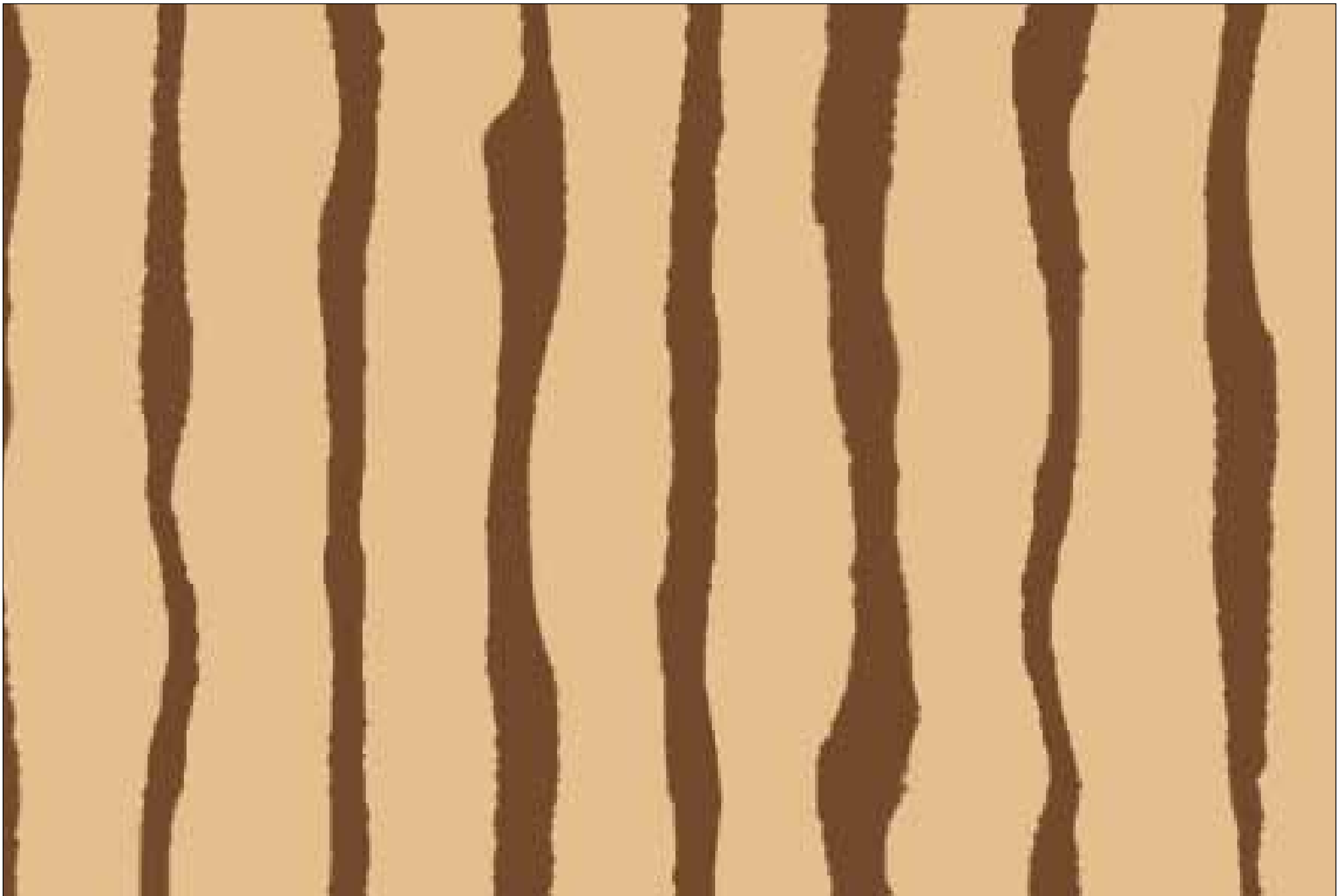




Style #OSAF
Pattern #5473 PA
Reduced; blocks 13" x 10 1/4" including farme; 10 yards = 15 panels



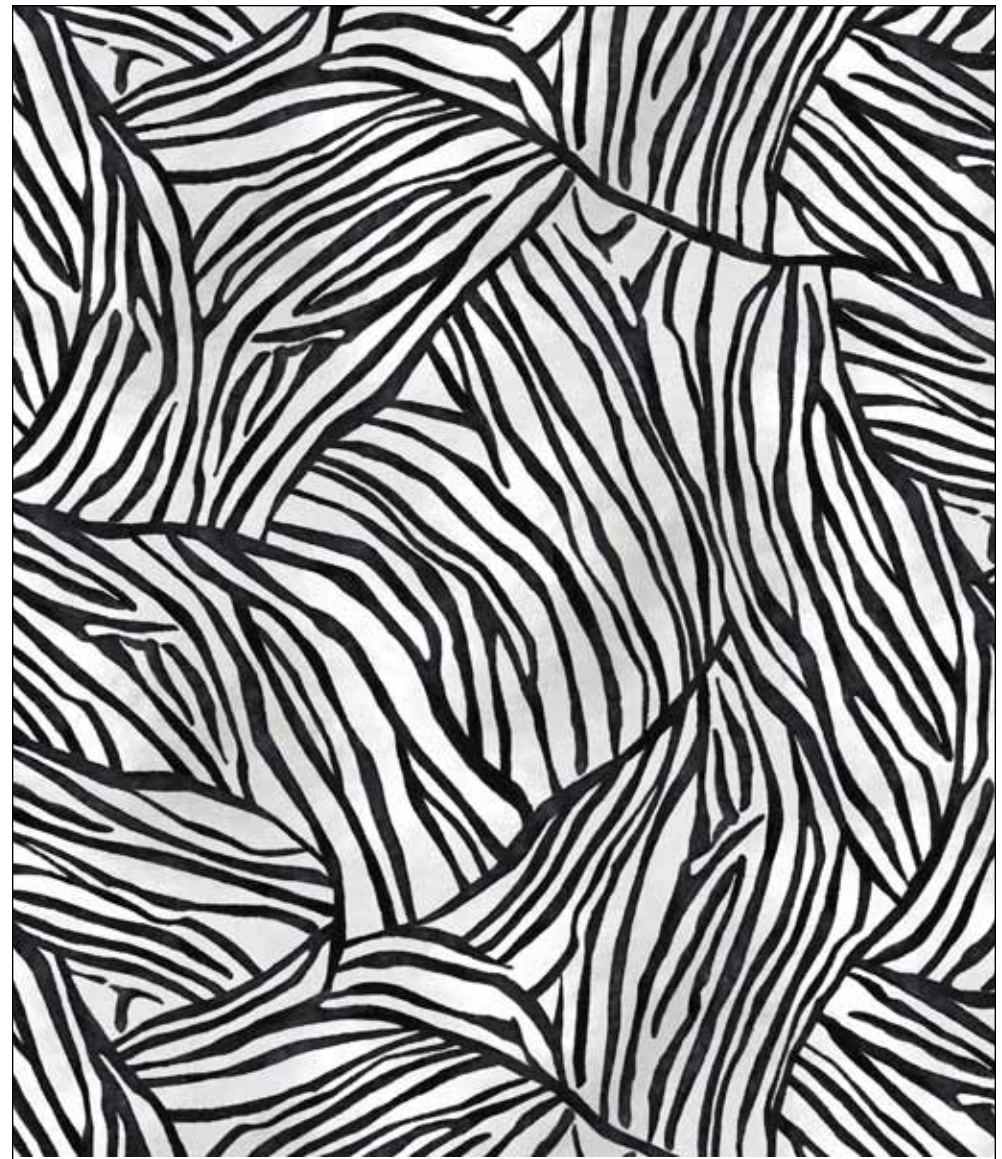
Style #OSAF
Pattern #5473 PA
100%



Style #OSAF
Pattern #5476 NE
100%



Style #OSAF
Pattern #5474 NE
100%



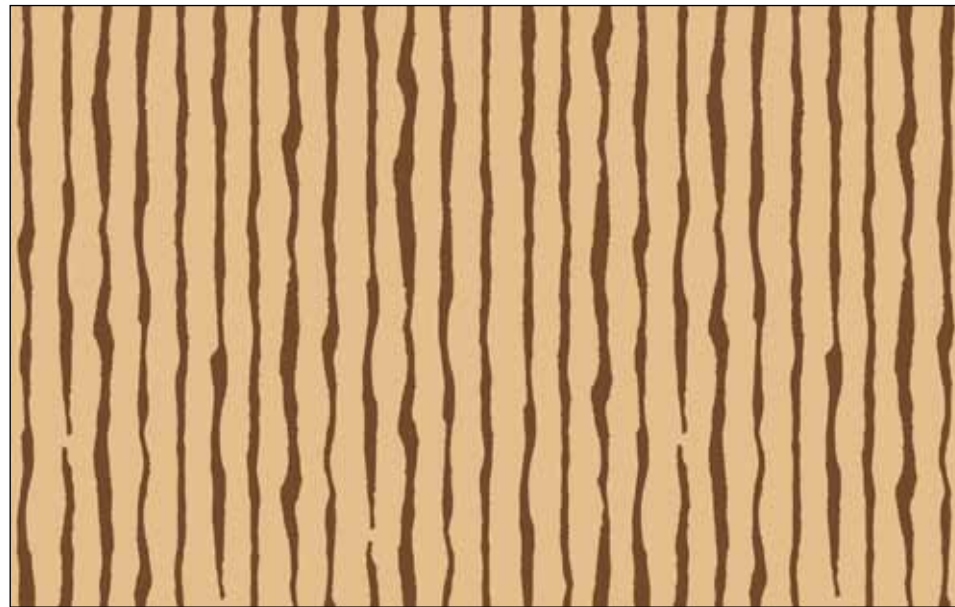
Style #OSAF
Pattern #5475 WK
100%



Style #OSAF
Pattern #5477 LG
100%



Style #OSAF
Pattern #5477 G
100%



Style #OSAF
Pattern #5476 NE
100%



Style #OSAF
Pattern #5478 LB
100%



Style #OSAF
Pattern #5478 S
100%

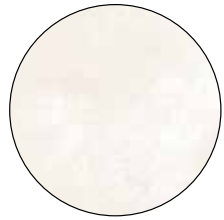


Style #OSAF
Pattern #5479 BNE
100%

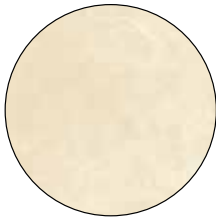


Style #OSAF
Pattern #5479 GNE
100%

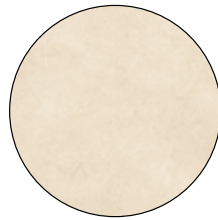
BLENDER SUGGESTIONS:



SUE7 303 EW



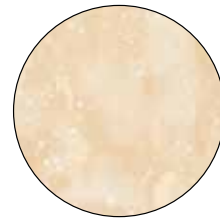
SUED 300 E



SUES 299 E



GRAS 5233 E



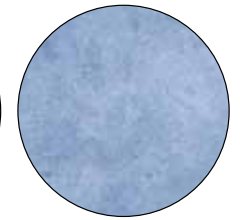
COSM 5130 E



GRAS 5233 NE



COSM 5130 NE



SUE6 302 BB



GRAS 5233 I



SUEM 300 EZ



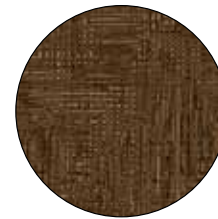
GRAS 5233 ZU



SUED 300 ZZ



COSM 5130 ZZ



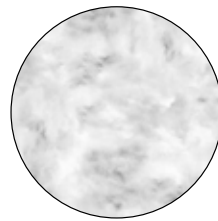
GRAS 5244 ZZ



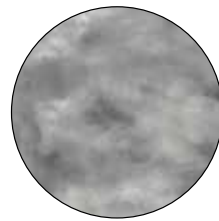
SUED 300 Z



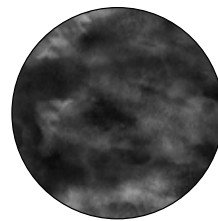
COSM 5130 Z



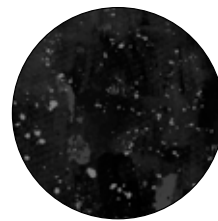
CSTO 5226 LS



CSTO 5226 S



CSTO 5226 K



COSM 5130 K



SUED 300 K

SUGGESTED 108":



GROO 4973 G



GROO 4973 U



100% cotton ♦ Cold wash & dry ♦ 44"/45" ♦ Colors may vary due to printing process

Not Intended for Children's Sleepwear





Quilt size approximately: 44" x 61"

Into The Wild quilt design by Wendy Sheppard

Pattern available at:
www.pbtex.com when the fabric ships.

FABRIC REQUIREMENTS*

OSAF 5473 PA	1 panel	OSAF 5478 LB.....	7/8 yard
OSAF 5474 NE	1/2 yard	OSAF 5478 S.....	1/2 yard
OSAF 5475 WK	1/2 yard		(binding)
OSAF 5476 NE	1/4 yard	OSAF 5479 GNE.....	5/8 yard
OSAF 5477 G.....	1/4 yard		
OSAF 5477 LG.....	1/4 yard	Total yardage.....	4 1/2 yards

*These yardages are estimates ONLY and may change on the pattern when it becomes available.

Kit Chart

Fabric (based on 15 yard bolts)	12	18	24
OSAF 5473 PA*	1	2	2
OSAF 5474 NE	1	1	1
OSAF 5475 WK	1	1	1
OSAF 5476 NE	1	1	1
OSAF 5477 G	1	1	1
OSAF 5477 LG	1	1	1
OSAF 5478 LB	1	2	2
OSAF 5478 S	1	1	1
OSAF 5479 GNE	1	1	2

(*10 yards = 15 panels)



Quilt size approximately: 44" x 54"

Scenic Safari quilt design by Wendy Sheppard

Pattern available at:
www.pbtex.com when the fabric ships.

FABRIC REQUIREMENTS*

OSAF 5473 PA	1 panel	OSAF 5479 GNE.....	5/8 yard
OSAF 5474 NE	1/4 yard	OSAF 5478 S.....	1/2 yard
OSAF 5475 WK	1/4 yard		(binding)
OSAF 5476 NE	3/8 yard	SUED 300 K.....	3/8 yard
OSAF 5477 G	5/8 yard		
OSAF 5477 LG.....	1/4 yard	Total yardage	4 yards

**These yardages are estimates ONLY and may change on the pattern when it becomes available.*

Kit Chart

Fabric (based on 15 yard bolts)	12	18	24
OSAF 5473 PA*	1	2	2
OSAF 5474 NE	1	1	1
OSAF 5475 WK	1	1	1
OSAF 5476 NE	1	1	1
OSAF 5477 G	1	1	2
OSAF 5477 LG	1	1	1
OSAF 5479 GNE	1	1	2
OSAF 5478 S	1	1	1
SUED 300 K	1	1	1

(*10 yards = 15 panels)