

# *Meadow At Dusk*

*by Stephanie Ryan*





Style #MDUS  
Pattern #5533 MU  
Reduced



Style #MDUS  
Pattern #5533 MU  
100%



Style #MDUS  
Pattern #5534 W  
Reduced



Style #MDUS  
Pattern #5534 W  
100%



Style #MDUS  
Pattern #5535 DB  
100%



Style #MDUS  
Pattern #5535 DD  
100%



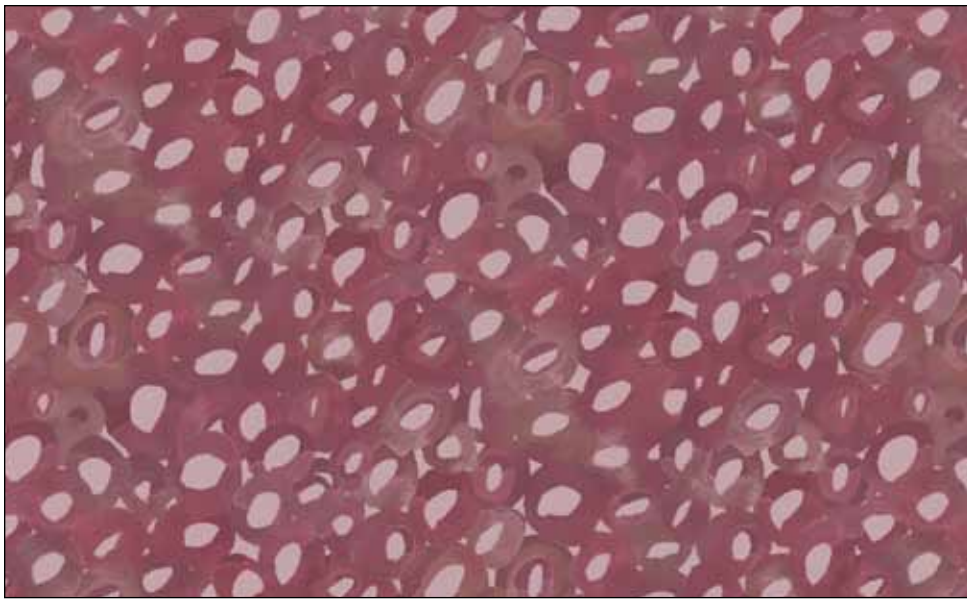
Style #MDUS  
Pattern #5535 W  
100%



Style #MDUS  
Pattern #5536 LB  
100%



Style #MDUS  
Pattern #5536 W  
100%



Style #MDUS  
Pattern #5537 D  
100%

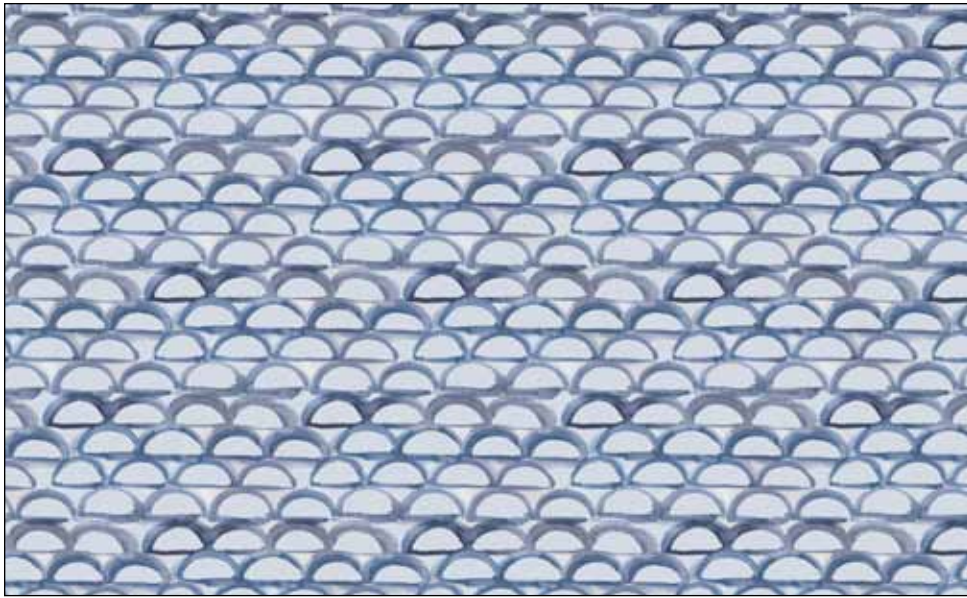


Style #MDUS  
Pattern #5537 LMU  
100%



Style #MDUS  
Pattern #5537 DB  
100%

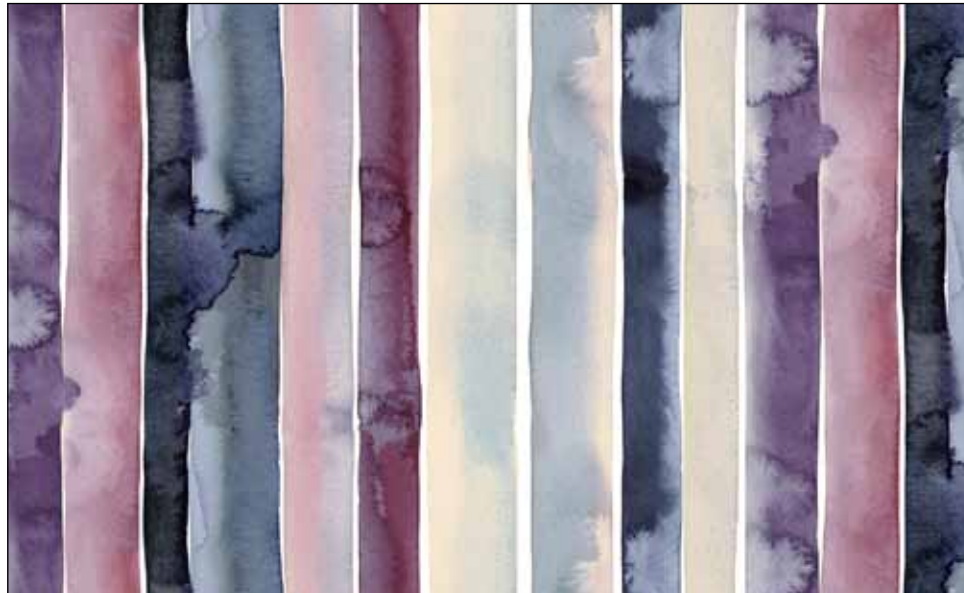




Style #MDUS  
Pattern #5538 B  
100%



Style #MDUS  
Pattern #5538 LD  
100%



Style #MDUS  
Pattern #5539 MU  
100%

## BLENDER SUGGESTIONS:



SUES 299 E

SERE 4492 E

SUE6 302 DN

SUED 300 DR

## 108" SUGGESTIONS:



BOHW 5004 N

FWID 5113 WS

GEOW 5318 WLS



100% cotton ♦ Cold wash & dry ♦ 44"/45" ♦ Colors may vary due to printing process

Not Intended for Children's Sleepwear

## PRECUTS AVAILABLE!

Fat Quarter Bundle (13 skus).....	3 Minimum Order
5" x 5" (42 skus) .....	6 Minimum Order
10" x 10" (42 skus).....	3 Minimum Order
2 1/2" strips (40 skus).....	3 Minimum Order



All Bundles





Quilt size approximately: 74" x 74"

## Sweet Gatherings Quilt by Stacey Day

Pattern available at:  
[www.pbtex.com](http://www.pbtex.com) when the fabric ships.

### FABRIC REQUIREMENTS\*

MDUS 5533 MU..1 3/8 yards	MDUS 5537 DB ... 3/8 yard
MDUS 5534 W..... 1 3/8 yards	MDUS 5537 LMU. 5/8 yard
MDUS 5535 DB... 1/4 yard	MDUS 5538 B..... 5/8 yard
MDUS 5535 DD... 1/8 yard	MDUS 5538 LD.... 1/4 yard
MDUS 5536 LB.... 3/8 yard	MDUS 5539 MU.. 5/8 yard
MDUS 5536 W..... 1 1/4 yards	
MDUS 5537 D ..... 5/8 yard	Total yardage..... 7 7/8 yards

*\*These yardages are estimates ONLY and may change on the pattern when it becomes available.*

### Kit Chart

Fabric (based on 15 yard bolts)	12	18	24
MDUS 5533 MU	2	2	3
MDUS 5534 W	2	2	3
MDUS 5535 DB	1	1	1
MDUS 5535 DD	1	1	1
MDUS 5536 LB	1	1	1
MDUS 5536 W	2	2	3
MDUS 5537 D	1	1	2
MDUS 5537 DB	1	1	1
MDUS 5537 LMU	1	1	2
MDUS 5538 B	1	1	2
MDUS 5538 LD	1	1	1
MDUS 5539 MU	1	1	2