

LIVING WILD

Quilt design by Stacey Day



Quilt size: approximately 62" square

Featuring fabrics from
Living Wild collection by KG Art Studio for P&B Textiles



P&B Textiles • pbtex.com • 800-351-9087 • 208 Clock Tower Square, Portsmouth, RI 02860

LIVING WILD

Fabric collection by KG Art Studio for P&B Textiles

Quilt design by Stacey Day

Skill level: Confident Beginner • Finished Block Size: 12" • Finished Quilt Size: approximately 62" square

Yardages:

Fabric A: **LIVW 3086 MU** 2 yards
Fabric B: **LIVW 3075 MU** 1 panel
(12 of 16 images used)
Fabric C: **LIVW 3077 B** 2 yards
Fabric D: **LIVW 3077 MU** 2/3 yard
Fabric E: **LIVW 3076 MU** 1/3 yard
Backing: (**LIVW 3076 MU suggested**) 4 yards
Batting 70" x 70"

Cutting Instructions:

Please read all instructions carefully before beginning. Strips are cut across the width of fabric unless otherwise stated. All seams are sewn with a 1/4" seam unless otherwise stated.

From Fabric A:

1. Cut six 2" strips.
2. Cut six 6 1/2" strips; sub-cut forty-eight each of Template 2 and Template 3.
3. Cut seven 2 1/4" strips for binding

From Fabric B:

1. Cut twelve 9" squares, centering motif. Cut two each of fish, fox, otter, and hare. Cut one of bear and sloth looking right, and one of turtle and whale facing left.

From Fabric C:

1. Cut twelve 2 1/2" strips.
2. Cut one 18 1/4" strip; cut into two 18 1/4" x 18 1/4" square, cut twice on the diagonals into eight triangles.
3. Cut one 12 1/2" strip; cut into one 12 1/2" square. Cut two 9 3/8" squares, cut once on the diagonal into four triangles.

From Fabric D:

1. Cut four 5" strips; cut thirty-two of Template 1.

From Fabric E:

1. Cut two 5" strips; cut sixteen of Template 1.

Piecing & Assembly Instructions:

1. Sew Template 2 and 3 A pieces to either side of each D and E Template 1 piece (Figure 1). Press towards A. Make thirty-two A Units and sixteen B Units.

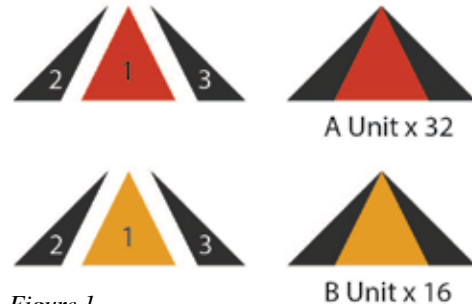


Figure 1

2. Sew A Units to each side of the fish, fox, otter, and hare 9" B squares (Figure 2). Press towards the A Units. Make eight A Blocks 12 1/2" x 12 1/2".

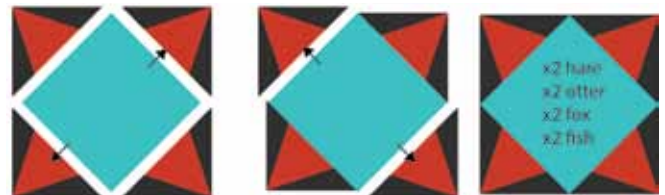


Figure 2

3. Sew the B Units to each side of the bear, sloth, turtle, and whale 9" B squares (Figure 3). Press towards the B Units. Make four B Blocks 12 1/2" x 12 1/2".



Figure 3

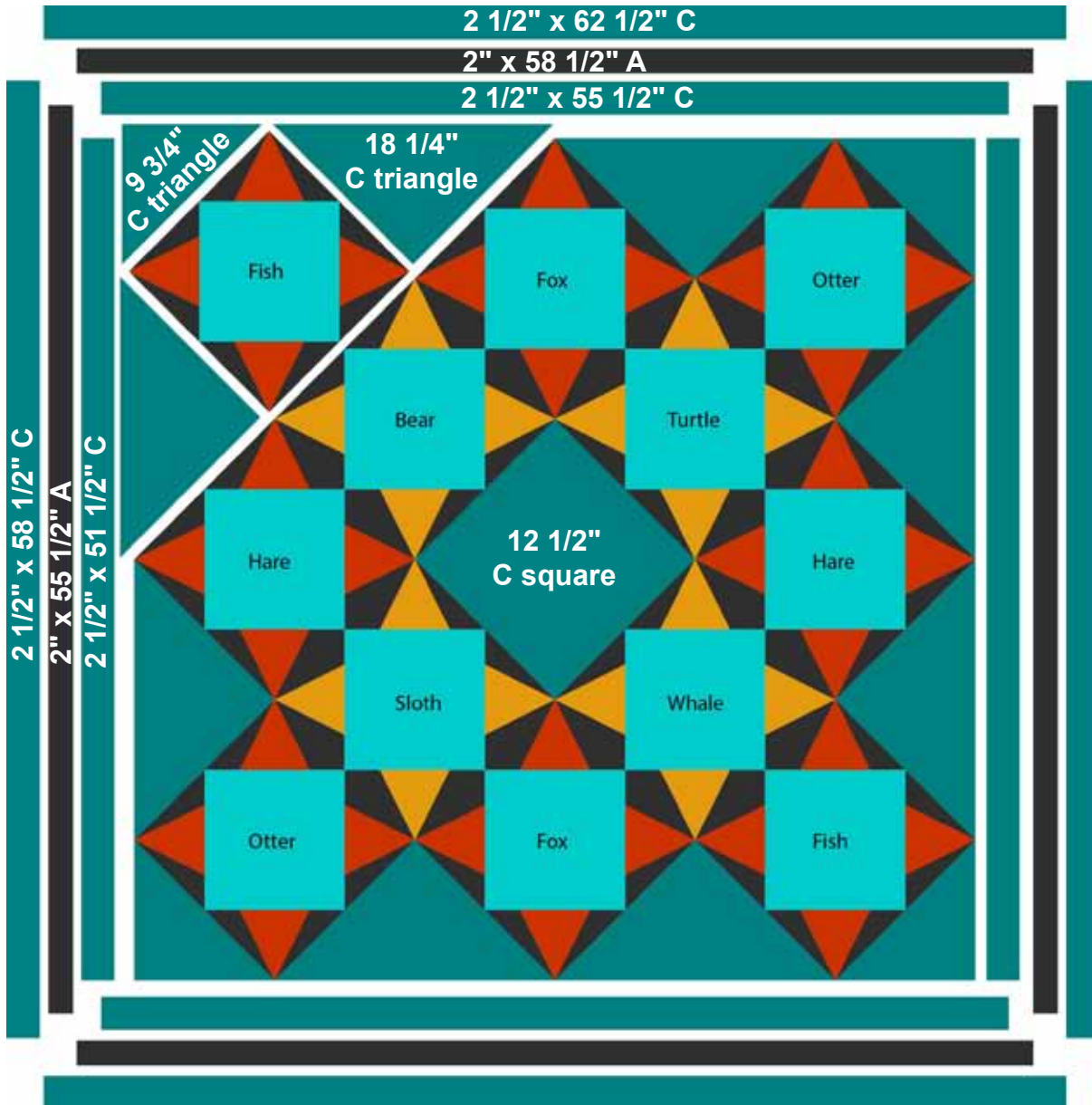
4. Sew 2 1/2" C strips together end to end. Press seams open. Cut the strip into two 2 1/2" x 51 1/2", two 2 1/2" x 55 1/2", two 2 1/2" x 58 1/2", and two 2 1/2" x 62 1/2" border strips.
5. Sew 2" A strips together end to end. Press seams open. Cut into two 2" x 55 1/2" and two 2" x 58 1/2" strips.
6. Sew A and B blocks, 12 1/2" C squares, 9 3/8" triangles, and 18 1/4" triangles together into diagonal rows, paying careful attention to the main quilt image for the orientation and direction of each motif. Press. Sew the rows together to make the quilt center. Press.

7. Sew two 2 1/2" x 51 1/2" C strips and two 2 1/2" x 55 1/2" C strips to the sides of the quilt center. Press towards C.
8. Sew two 2" x 55 1/2" A strips and two 2" x 58 1/2" A strips to the quilt sides. Press towards A.
9. Sew two 2 1/2" x 58 1/2" C strips and two 2 1/2" x 62 1/2" C strips to the quilt sides. Press towards A.

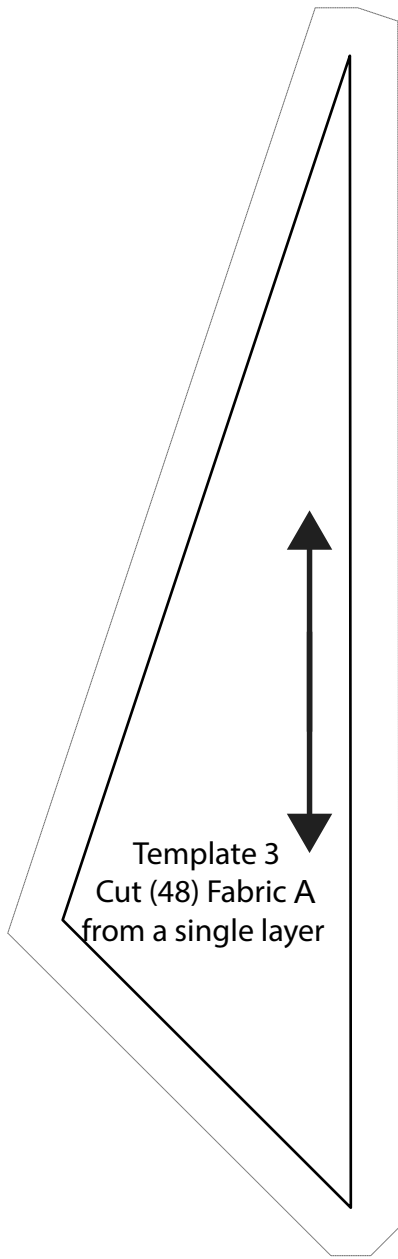
2. Layer backing, batting and quilt top. Baste and quilt as desired.
3. Trim layers even with quilt top.
4. Sew seven 2 1/4" A binding strips together with diagonal seams. Press seams open. Press binding in half lengthwise, wrong sides together, to create double-fold binding. Sew binding to quilt using your favorite method.
5. Make a label and sew to the back of quilt.

Finishing:

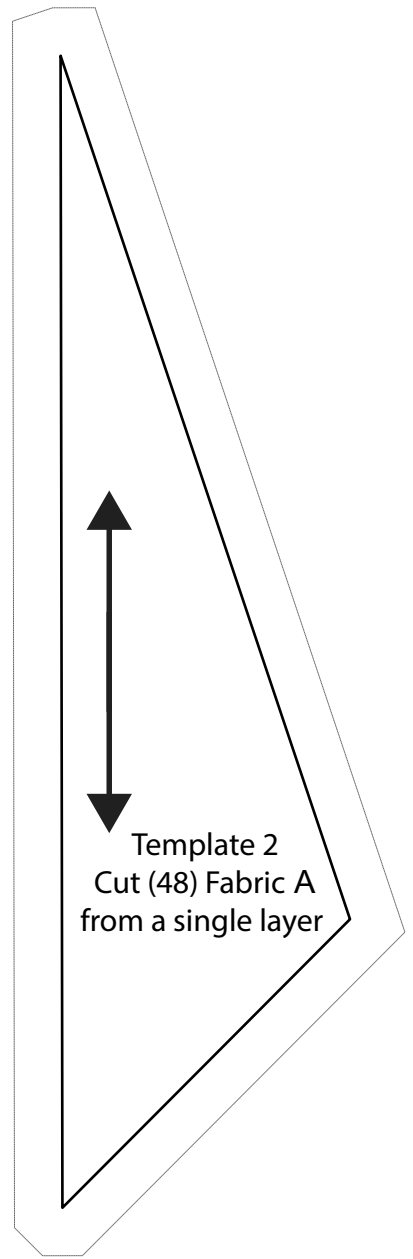
1. Prepare backing with a vertical seam to measure 70" x 70". Press seam open.



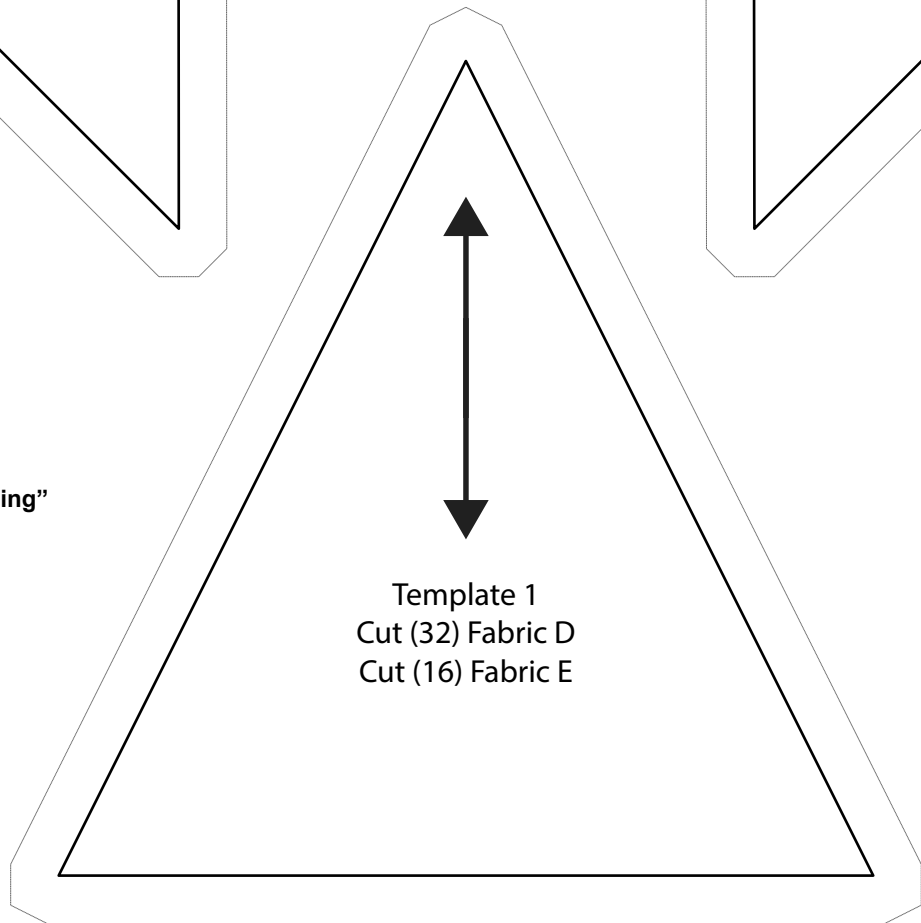
Quilt Diagram



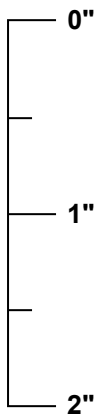
Template 3
Cut (48) Fabric A
from a single layer



Template 2
Cut (48) Fabric A
from a single layer



Template 1
Cut (32) Fabric D
Cut (16) Fabric E



Scale Check for pdf files. When you print these templates, this ruler should measure 2 inches long. If it does not, change, "page scaling" to "none" in the print dialog box.

LIVING WILD

Fabric Collection by KG Art Studio
for P&B Textiles



LIVW 3075 MU*



LIVW 3076 MU* †



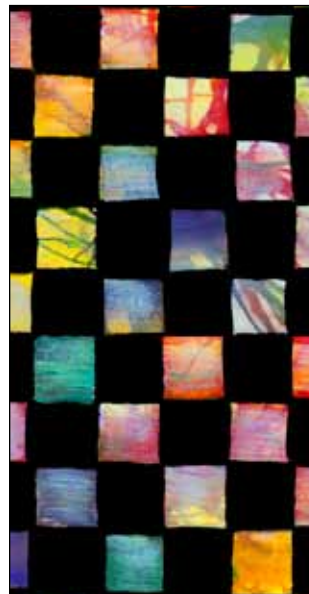
LIVW 3076 B*



LIVW 3077 B*



LIVW 3077 MU*



LIVW 3086 MU*

Providence, RI 028