

# Let Freedom Fly Forever

Original Quilt Design by Laura Blanchard of Plum Tree Quilts



Quilt size: approximately 56 3/4" square

*Featuring fabrics from Let Freedom Fly Forever collection  
by Jacqueline Paton for P&B Textiles*



P&B Textiles • pbtex.com • 800-351-9087 • 45 Washington Street, Pawtucket, RI 02860

# Let Freedom Fly Forever

Fabric collection by Jacqueline Paton for P&B Textiles

Original Quilt Design by Laura Blanchard of Plum Tree Quilts

Skill level: Advanced Beginner • Finished Quilt Size: approximately 56 3/4" square.

## Yardages:

Fabric 1: <b>LETF 496 RB</b> .....	1 1/8 yards
Fabric 2: <b>LETF 498 B</b> .....	7/8 yard
Fabric 3: <b>LETF 498 SB</b> .....	2/3 yard
Fabric 4: <b>LETF 499 R</b> .....	5/8 yard
Fabric 5: <b>LETF 499 RB</b> .....	1/3 yard
Fabric 6: <b>LETF 500 R</b> .....	3/4 yard
Fabric 7: <b>SUED 300 LZ</b> .....	1 1/4 yards
Backing: <b>LETF 497 RB</b> .....	3 2/3 yards
Batting.....	64" x 64"

## Cutting Instructions:

Please read all instructions carefully before beginning. Strips are cut across the width of fabric unless otherwise stated. All seams are sewn with a 1/4" seam unless otherwise stated. Label all pieces with the letters given in the cutting steps.

### From Fabric 1 (LETF 496 RB):

- Cut five 6 1/2" strips. Sub cut:
  - twenty-eight 6 1/2" squares (A).

### From Fabric 2 (LETF 498 B):

- Cut seven 2 1/2" strips. Sub cut:
  - from one strip five 2 1/2" squares for center block (B) and four 2 1/2" squares (O) for zigzag border.
  - use remaining strips for zigzag units (C).
- Cut two 2" strips for 4-patch (D).

### From Fabric 3 (LETF 498 SB):

- Cut three 6 1/2" strips. Sub cut:
  - seventeen 6 1/2" squares (E).

### From Fabric 4 (LETF 499 R):

- Cut six 2 1/2" strips for zigzag (F).

### From Fabric 5 (LETF 499 RB):

- Cut two 2" strips for 4-patch (G).
- Cut four 2 1/2" squares for center block (H).

### From Fabric 6 (LETF 500 R):

- Cut one 6 1/2" strip. Sub cut:
  - four 6 1/2" squares (I).
- Cut six 2 1/4" strips for binding.

### From Fabric 7 (SUED 300 LZ):

- Cut two 2" strips for 4-patch (J).
- Cut three 3 1/2" strips. Sub-cut:
  - four 3 1/2" x 6 1/2" rectangles (K);
  - sixteen 3 1/2" squares (L).
- Cut two 9 3/4" strips. Sub-cut:
  - five 9 3/4" squares, then cut twice diagonally to make twenty triangles (M).
  - two 8 3/4" squares, then cut twice diagonally to make eight triangles (N).

## Piecing Instructions:

### A. Center block:

- Sew five B squares together with four H squares to make three rows (Figure 1). Press toward B. Join the rows to make the 6 1/2" x 6 1/2" center block. Press open.

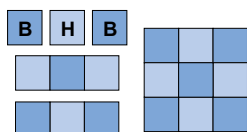
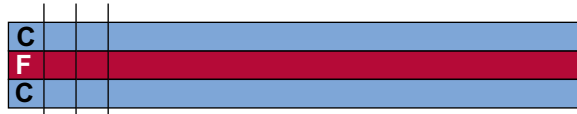


Figure 1 Make 1.

### B. Zig-zag units:

- Make two C/F/C strip sets and two F/C/F strip sets as shown in Figure 2. Press toward C.

2 1/2"



C units, cut 20.

2 1/2"

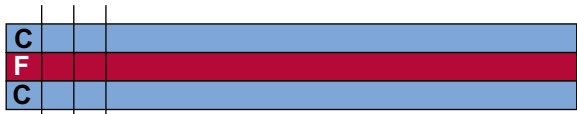


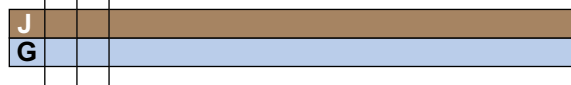
Figure 2 F units, cut 24.

- Crosscut twenty 2 1/2" C units from the C/F/C strip sets and twenty-four 2 1/2" F units from the F/C/F strip sets.

### C. 4-Patch blocks

- Make two D/J strip sets and two G/J strips sets as shown in Figure 3. Press toward D and G.

2"



G units, cut 24.

2"

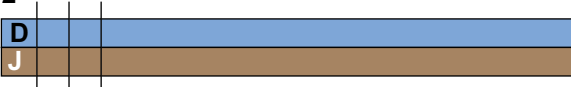


Figure 3 D units, cut 24.

- Crosscut twenty-four 2" D units and twenty-four 2" G units.



- Sew one D unit to a G unit as shown in Figure 4. Press. Make twenty-four (3 1/2" x 3 1/2") 4-Patches.

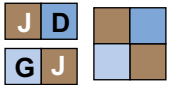


Figure 4 **Make 24.**

- Sew one 4-Patch to an L square in the position shown in Figure 5. Press toward L. Repeat to make eight units. Next, sew one 4-Patch to an L square in the position shown in Figure 6. Repeat to make eight units. Press toward L. Sew the units from Figures 5 and 6 together to make eight (6 1/2" x 6 1/2") 4-Patch blocks (Figure 7). Press.



Figure 5



Figure 6

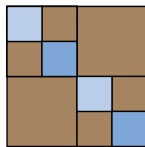


Figure 7

**Make 8  
4-Patch  
blocks.**

- Sew two 4-Patches together as shown in Figure 8. Re-press as needed to maintain opposing seams. Make four units. Sew a K rectangle to each unit to complete four 6 1/2" x 6 1/2" corner blocks (Figure 9).



Figure 8

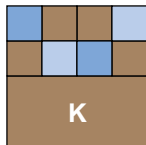


Figure 9

**Make 4  
4-Patch  
corner  
blocks.**

## Quilt Assembly:

The quilt will be assembled in two halves with diagonal rows. The center diagonal row will be sewn last and will join the halves to complete the quilt top.

- Arrange the units, blocks and squares for half of the quilt on a design wall or other flat surface (Figure 11). Position the 4-Patch blocks and corner block so that the D and G pieces alternate from block to block.
- Referring to Figure 10:
  - Sew the 4-Patch blocks and corner block, squares and F units together into diagonal rows. Press seams in direction of arrows.
  - To assemble the corner A unit, sew an F unit to opposite sides of A. Press. Sew an O square to each end of an F unit. Press. Join the two units, matching seams. Press.
  - Sew the C units to the M triangles in the positions shown, matching corners. *[Notice that the C units are sewn to one short side of the M triangles on the lower edge of the diagram and to the opposite short side of the triangles on the upper right edge of the diagram.]* Press toward M. Do not stitch the M/C units to the rows at this time.
  - Sew two N triangles together along one short bias side. Press.
- Joining the rows:
  - sew the M/C units to opposite sides of the A corner unit, matching corners and seams. Press toward M/C. Sew the N/N unit to the narrow end, matching centers. Press toward the N/N unit.
  - Sew the next row to the A row, matching centers and seams. Press. Sew the M/C units to each end, matching corners and seams. Press toward M/C.
  - Continue joining the remaining rows in the same manner to complete one half of the quilt top (Figure 11).
  - Make two identical units.
- Sew together units, blocks and squares for the center row as shown in Figure 12. Press in direction of arrows.
- Sew the center row between the two halves of the quilt, matching seams (Quilt Diagram). Press. Sew the N/N units to opposite corners as shown, matching centers.
- Square the quilt top so that the outside points of the zigzag are 1/4" from the raw edges on all four sides.

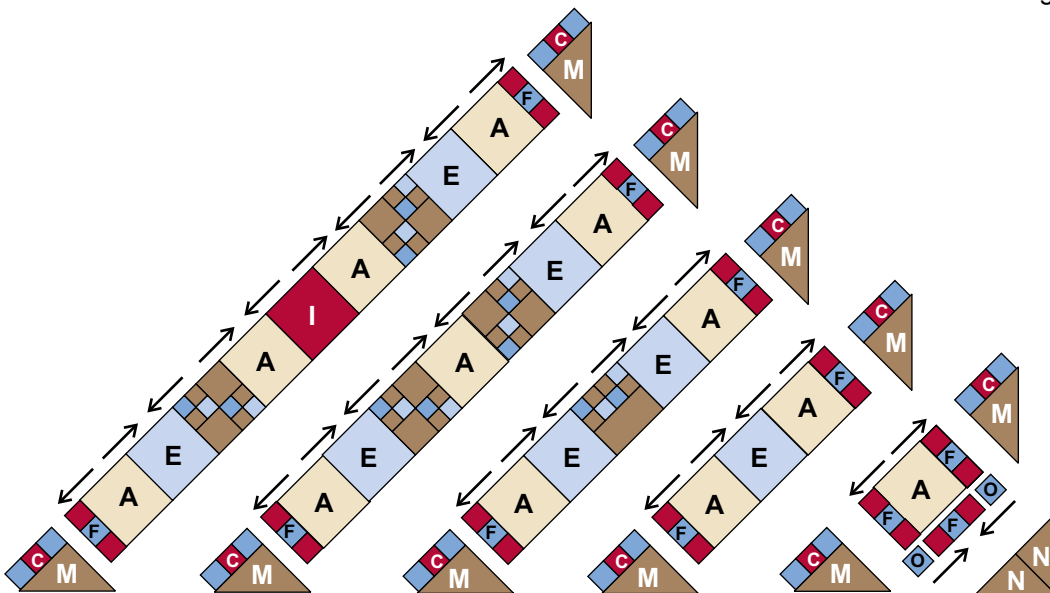


Figure 10 **Make 2.**

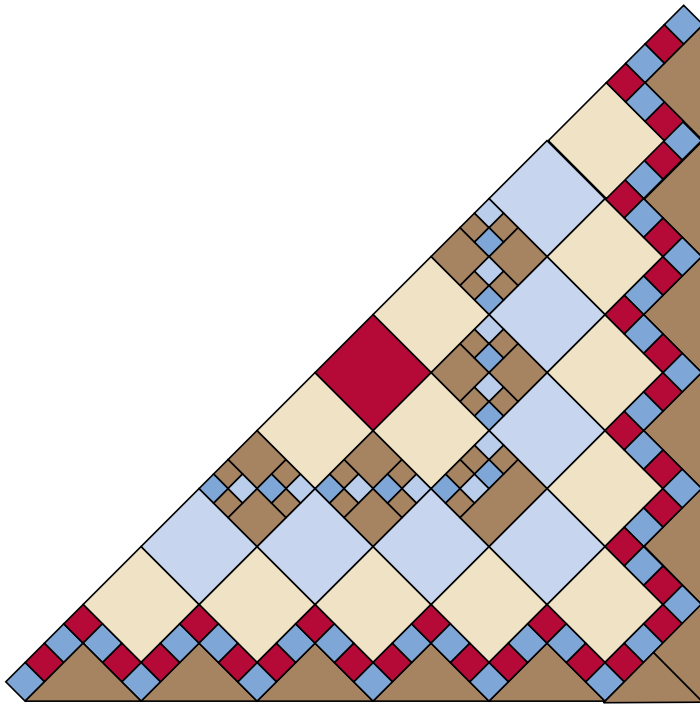


Figure 11

### Finishing:

1. Cut two 64" backing pieces. Join on the long edges with a 1/2" seam allowance. Press seam open. Trim to 64" square.
2. Layer backing, batting and quilt top. Baste layers together.
3. Quilt as desired.
4. Trim layers even with top.
5. Join six binding strips with diagonal seams. Press seams open. Press strip in half lengthwise with wrong sides together to make double-fold binding. Sew binding to quilt using your favorite method.
6. Make a label and sew to back of the quilt.

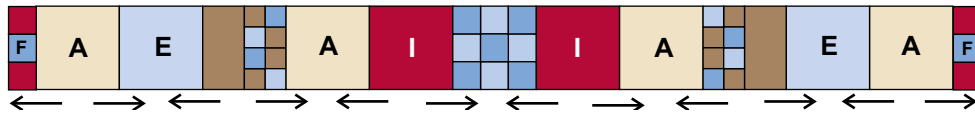
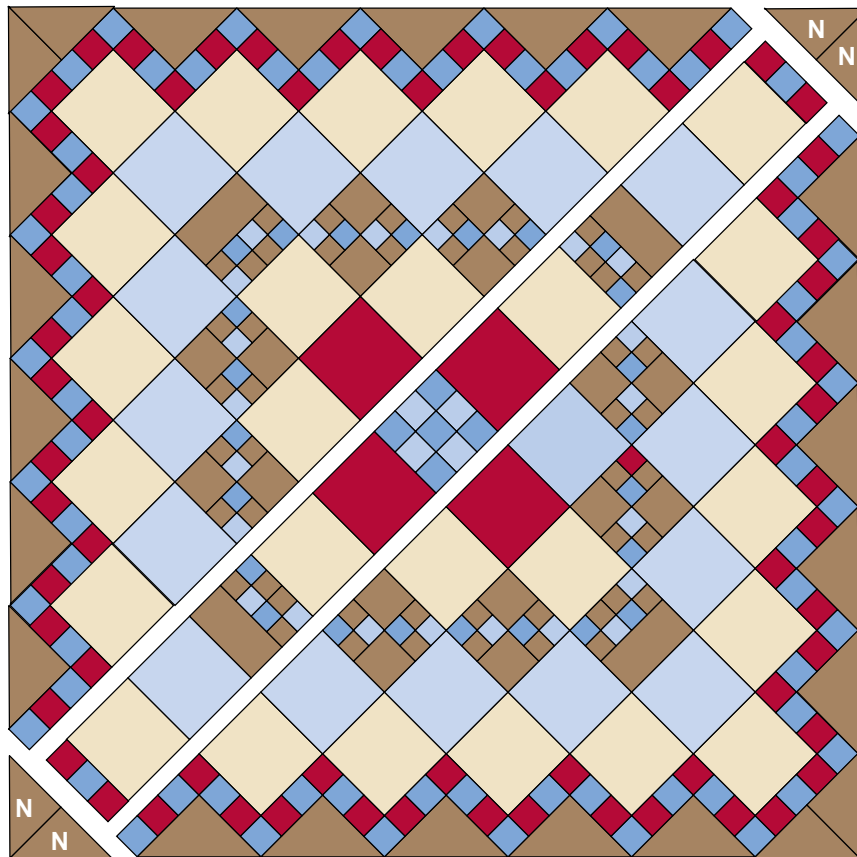


Figure 12



Quilt Diagram

# Let Freedom Fly Forever

Fabric Collection by  
Jacqueline Paton for P&B Textiles



LETF 495 PA



LETF 496 RB\*



LETF 497 RB†



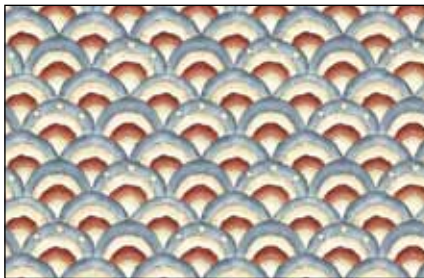
LEFT 498 B\*



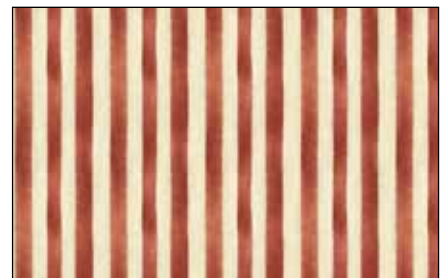
LETF 498 SB\*



LETF 499 R\*



LETF 499 RB\*



LETF 500 R\*



LETF 500 SB



SUED 300 LZ\*

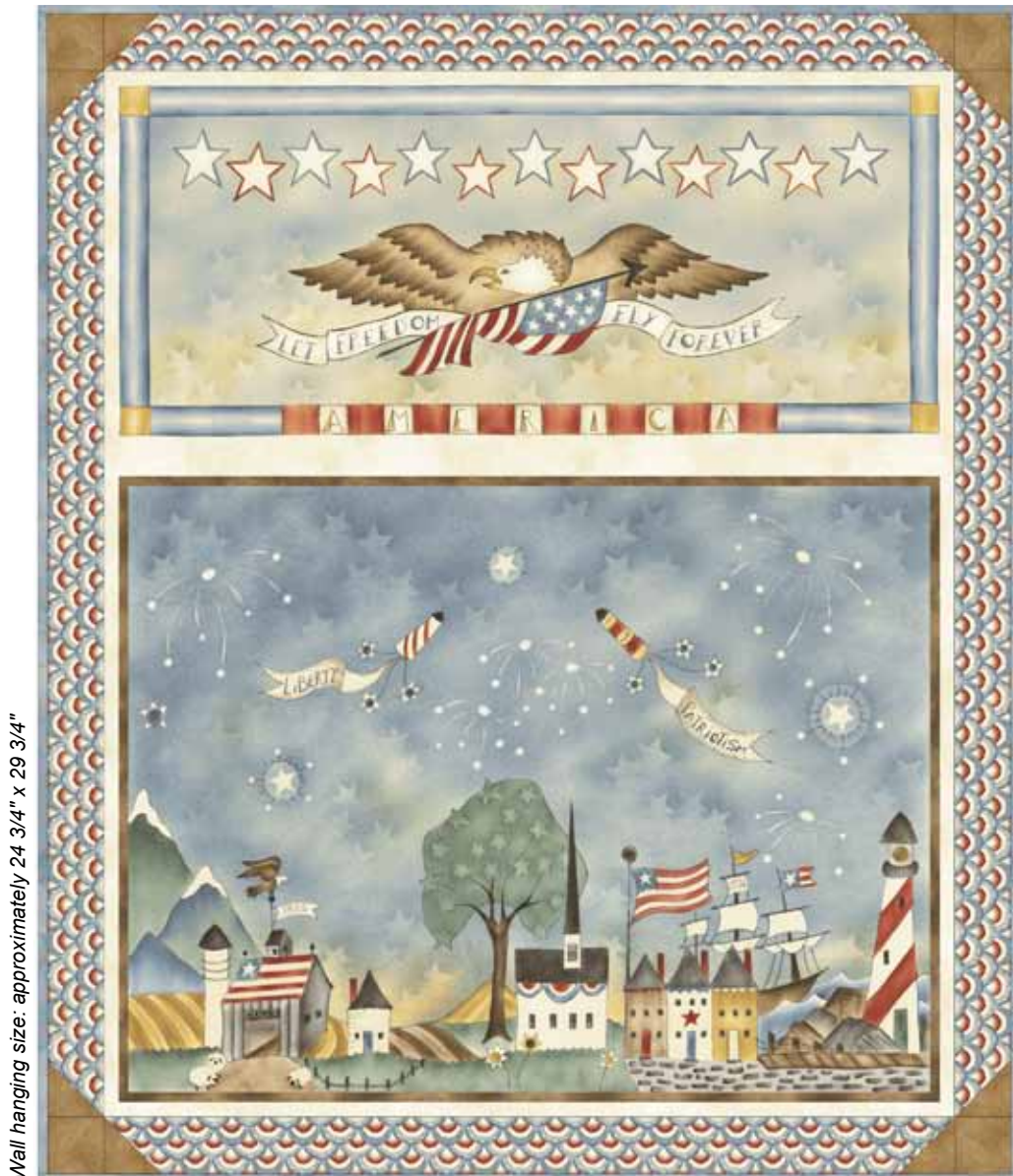
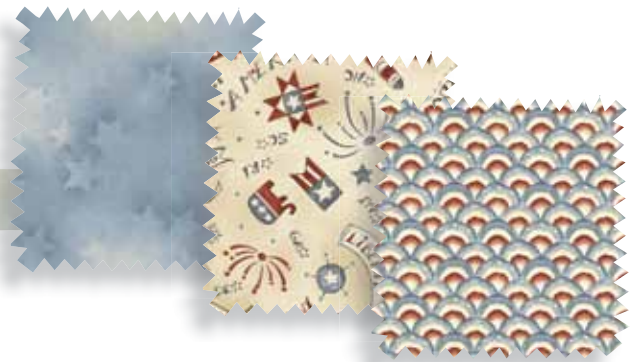
\*Fabrics used in quilt.

† Backing fabric.



# Let Freedom Fly Forever

Wall Hanging Design by Sleeping Horse Workshop™



*Featuring fabrics from Let Freedom Fly Forever collection  
by Jacqueline Paton for P&B Textiles*



P&B Textiles • pbtex.com • 800-351-9087 • 45 Washington Street, Pawtucket, RI 02860

# Let Freedom Fly Forever

Fabric collection by Jacqueline Paton for P&B Textiles

Design by Sleeping Horse Workshop™

Skill level: Confident Beginner • Finished Wall Hanging Size: approximately 24 3/4" x 29 3/4".

## Yardages:

Fabric A: <b>LETF 495 PA</b> .....	1 panel
Fabric B: <b>LETF 498 B</b> .....	1/3 yard
Fabric C: <b>LETF 499 RB</b> .....	1/3 yard
Fabric D: <b>SUED 300 EZ</b> .....	1/8 yard
Backing: <b>LETF 496 RB</b> .....	1 1/8 yards
Batting.....	31" x 36"

## Cutting Instructions:

Please read all instructions carefully before beginning. Strips are cut across the width of fabric unless otherwise stated. All seams are sewn with a 1/4" seam unless otherwise stated.

### From Fabric A (LETF 495 PA):

1. Fussy cut Eagle/Town section, 5/8" from edges (about 22 1/4" x 27 1/4"). Set aside rest of panel for second wall hanging.

### From Fabric B (LETF 498 B):

1. Cut three 2 1/4" strips for binding.

### From Fabric C (LETF 499 RB):

1. Cut four 2" strips for border.

### From Fabric D (SUED 300 EZ):

1. Cut one 2" strip. Sub-cut twelve 2" squares.

## Piecing Instructions:

1. Measure side of center panel and trim two C 2" strips to length. Measure top and bottom of center panel and trim two C 2" strips to length.
2. Draw a diagonal line on the wrong side of eight D 2" squares.
3. Position one D square right sides together on one end of a C side strip as shown in Figure 1. Stitch on the line. Trim 1/4" away from the stitching line. Press toward D. Repeat on opposite end. Make two.

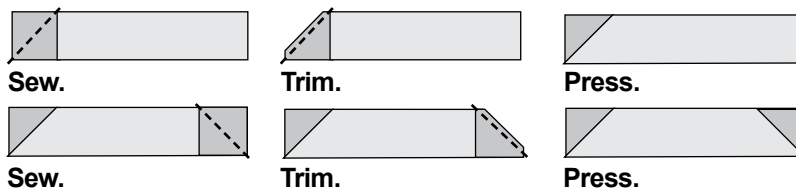


Figure 1 Make 2.

4. Sew borders to opposite sides of center panel. Press toward border.
5. Repeat step 3 with the top and bottom C strips. Sew one D square to opposite ends of the pieced strips (Figure 2). Press toward D.



Figure 2 Make 2.

6. Sew one border to the top and bottom of center panel. Press toward border.

## Finishing:

1. Trim backing to measure 31" x 36".
2. Layer backing, batting and wall hanging top. Baste layers together.
3. Quilt as desired.
4. Trim layers even with top.
5. Join three 2 1/4" B binding strips with diagonal seams. Press seams open. Press strip in half lengthwise with wrong sides together to make double-fold binding. Sew binding to quilt using your favorite method.
6. Make a label and sew to back of the wall hanging.

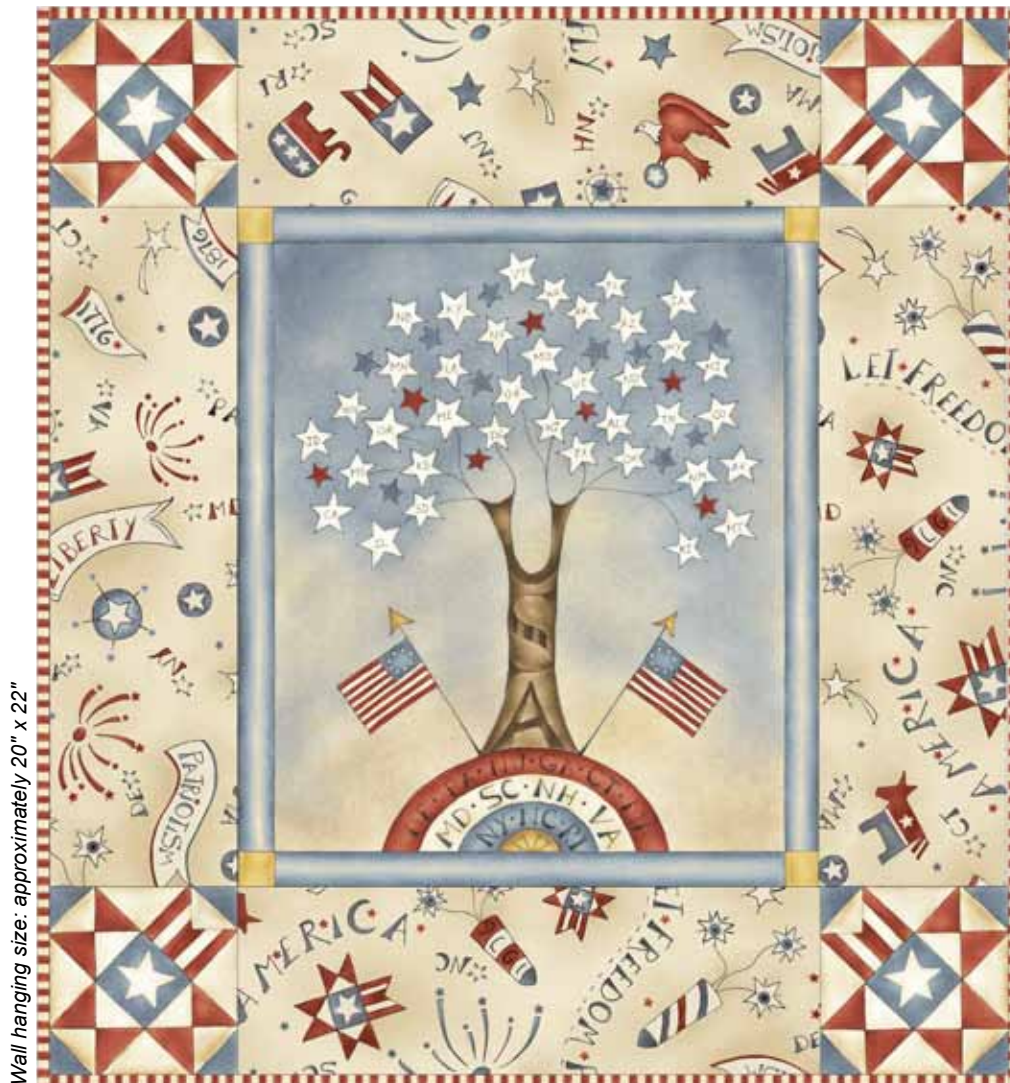


Wall Hanging Diagram



# Let Freedom Fly Forever

Wall Hanging Design by Sleeping Horse Workshop™



Wall hanging size: approximately 20" x 22"

*Featuring fabrics from Let Freedom Fly Forever collection  
by Jacqueline Paton for P&B Textiles*



P&B Textiles • pbtex.com • 800-351-9087 • 45 Washington Street, Pawtucket, RI 02860



# Let Freedom Fly Forever

Fabric collection by Jacqueline Paton for P&B Textiles

Design by Sleeping Horse Workshop™

Skill level: Confident Beginner • Finished Wall Hanging Size: approximately 20" x 22".

## Yardages:

Fabric A: **LETF 495 PA** ..... 1 panel  
Fabric B: **LETF 496 RB** ..... 3/8 yard  
Fabric C: **LETF 500 R** ..... 1/4 yard  
Backing: **LETF 499 RB** ..... 7/8 yard  
Batting ..... 26" x 28"

## Cutting Instructions:

Please read all instructions carefully before beginning. Strips are cut across the width of fabric unless otherwise stated. All seams are sewn with a 1/4" seam unless otherwise stated.

### From Fabric A (LETF 495 PA):

1. Fussy cut Liberty Tree section, 1/4" from edges (about 12 1/2" x 14 1/2") .
2. Fussy cut four stars, 1/4" from edges (about 4 1/2" x 4 1/2")

### From Fabric B (LETF 496 RB):

1. Cut two 4 1/2" strips for border.

### From Fabric C (LETF 500 R):

1. Cut three 2 1/4" strips for binding.

## Piecing Instructions:

1. Measure side of A panel and trim two B 4 1/2" strips to length. Measure top and bottom of A panel and trim two B 4 1/2" strips to length.
2. Sew one B strip to opposite sides of A panel. Press toward border.
3. Sew one A 4 1/2" square to each end of the top and bottom B 4 1/2" strips. Press toward A.
4. Sew top and bottom borders to center unit. Press toward border. **Note:** Trim outer edges of B borders even with edges of corner stars if necessary.

## Finishing:

1. Trim backing to measure 26" x 28".
2. Layer backing, batting and wall hanging top. Baste layers together.
3. Quilt as desired.
4. Trim layers even with top.
5. Join three 2 1/4" C binding strips with diagonal seams. Press seams open. Press strip in half lengthwise with wrong sides together to make double-fold binding. Sew binding to quilt using your favorite method.
6. Make a label and sew to back of the wall hanging.



Wall Hanging Diagram

# Let Freedom Fly Forever

Fabric Collection by  
Jacqueline Paton for P&B Textiles



LEFT 495 PA\*



LEFT 496 RB\*†



LEFT 497 RB†



LEFT 498 B\*



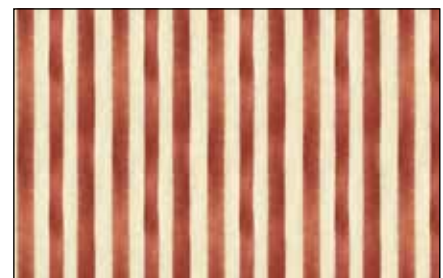
LEFT 498 SB



LEFT 499 R



LEFT 499 RB\*†



LEFT 500 R\*



LEFT 500 SB



SUED 300 EZ\*

\*Fabrics used in wall hangings.

† Backing fabric.